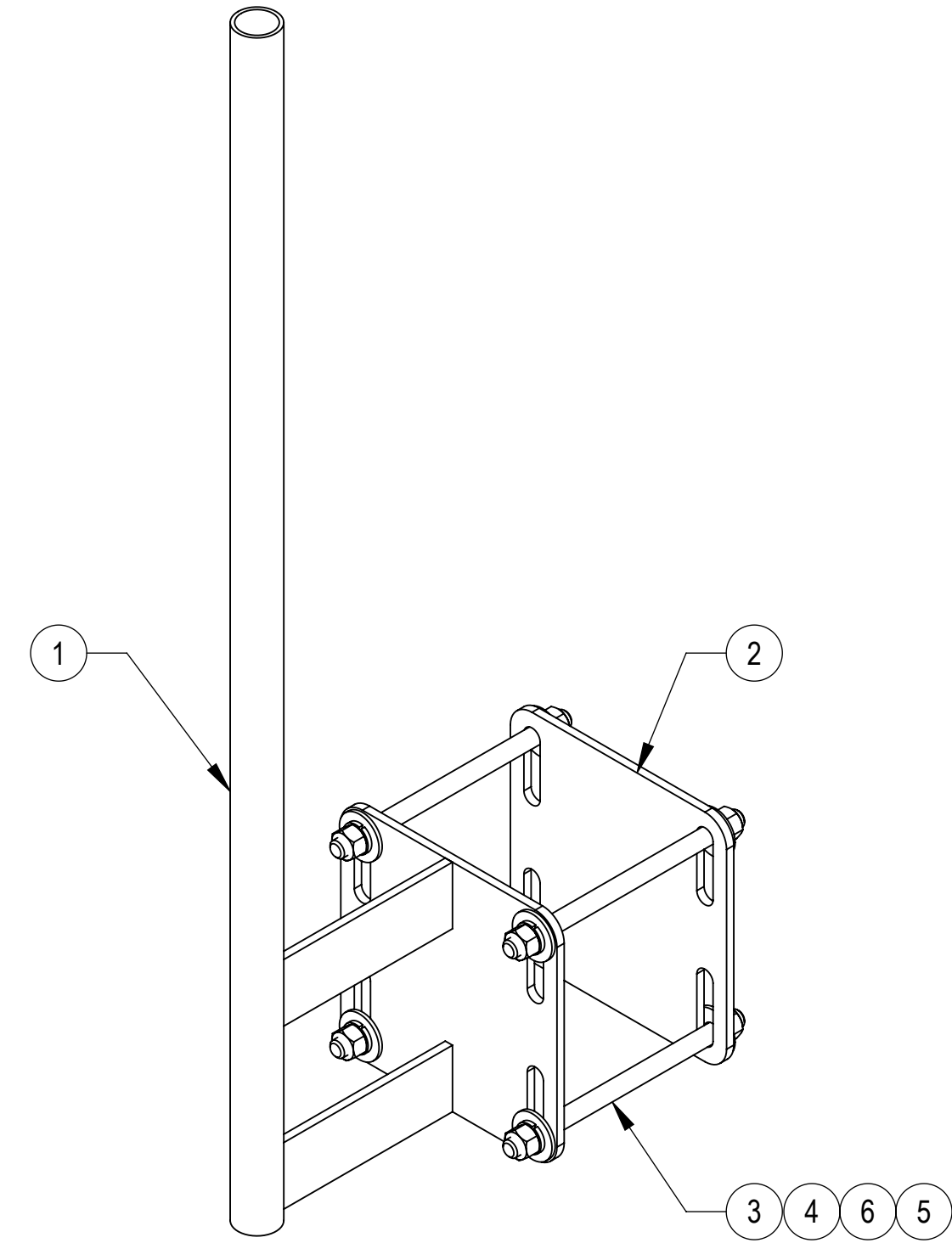
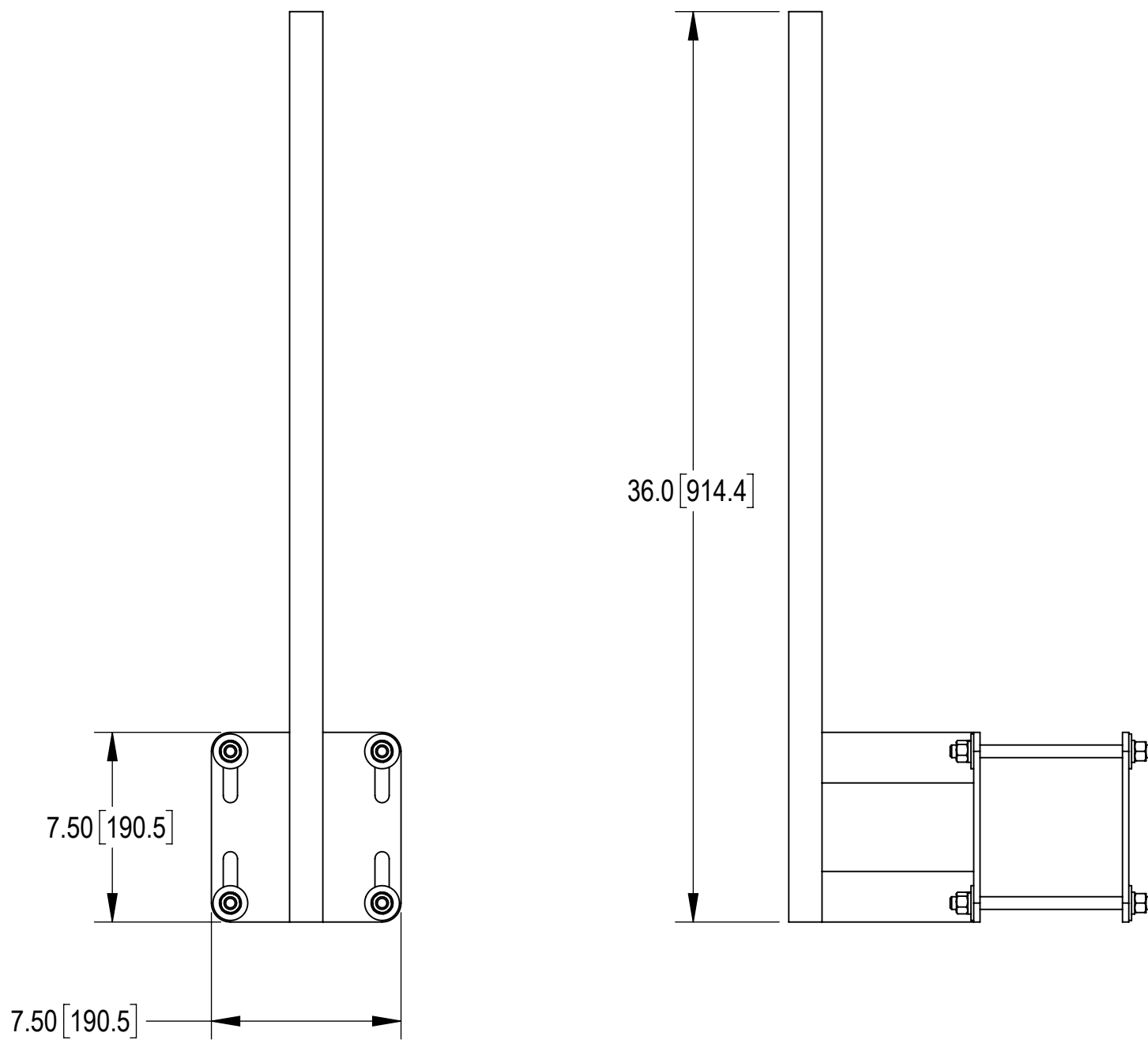
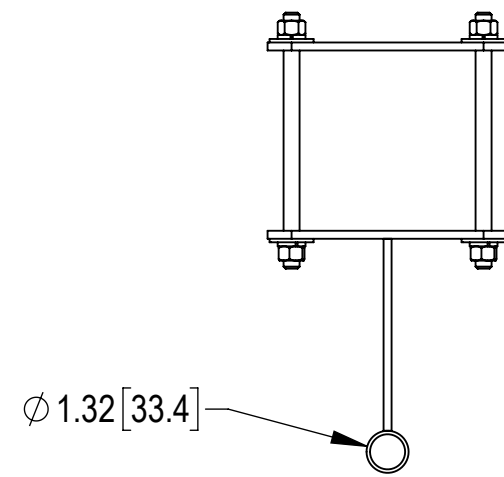


- 1.0 GENERAL NOTES
 - 1.1 ALL METRIC DIMENSIONS ARE IN BRACKETS [X.X]
 - 1.2 FOR PATENT INFO: <https://www.adwpat.com>
- 2.0 DESIGN NOTES
- 3.0 MANUFACTURING/SPECIAL REQUIREMENTS
 - 3.1 TIGHTEN ALL BOLTS 3/8" OR LARGER SECURING FLAT PLATES SNUG TIGHT.
 - 3.2 SNUG TIGHT IS DEFINED AS THE CONDITION OBTAINED WITH A FEW IMPACTS OF AN IMPACT WRENCH OR THE FULL EFFORT OF AN INSTALLER USING AN ORDINARY SPUD WRENCH TO BRING THE CONNECTED LAYERS (PLIES) OF STEEL INTO FULL CONTACT.
 - 3.3 FOR BOLTS IN A PATTERN, TIGHTEN IN A CRISS-CROSS OR STAR SEQUENCE, INCREASING TORQUE IN GRADUAL STEPS UNTIL SNUG TIGHT.
- 4.0 TEST
- 5.0 PACKAGING
 - 5.1 PACKAGING SHALL MEET ANDREW REQUIREMENTS PER DOCUMENT IS-PL-3005
 - 5.2 PRINTED DOCUMENT TO BE PLACED INSIDE POLYBAG AND THEN IN SHIPPING CONTAINER
 - 5.3 EXTRA HARDWARE MAY BE SUPPLIED, BAGGED AND SHIPPED

REVISIONS			
REV.	DESCRIPTION	DATE	APPROVED
A	INITIAL RELEASE	DRR 16AUG16	8000015659
B	UPDATED DRAWING FORMAT	NSUN 28NOV25	BA1025 50106034AMO



COMPONENT PART NUMBERS PROVIDED FOR ASSEMBLY PURPOSES;
INDIVIDUAL COMPONENTS MAY BE SHIPPED AS PARTS WITHIN AN INCLUDED KIT.

ITEM	PART NO.	DESCRIPTION	QTY.	WEIGHT	NOTE NO.
1	MTC3899GPS01	WELDMENT, WALL MOUNT	1	9.46 LBS	
2	MTC3899GPS02	PLATE, BACKING	1	3.58 LBS	
3	MT-379-8	1/2" X 8" GALV THREADED ROD	4	0.44 LBS	
4	GWL-04	1/2" GALV LOCK WASHER	8	0.01 LBS	
5	GWF-04	1/2" GALV FLAT WASHER	8	0.04 LBS	
6	GN-04	1/2" GALV HEX NUT	8	0.04 LBS	

DENSITY		lbs/in ³
MASS	15.57	lbs
VOLUME	55.24	in ³
SURFACE AREA	663.82	in ²
HEIGHT	36.0"	
LENGTH	7.5"	
WIDTH	7.5"	

Confidential

ANDREW® an Amphenol company

TOLERANCES		SAP MATERIAL MASTER							
0 PLACE	X[X] ± 0.25[6.3]	2 PLACE	.XX[X] ± 0.06[1.5]						
1 PLACE	.X[X] ± 0.12[3.0]	ANGLES	± 2°						
FINISH		MATERIAL							
		MTC3899GPS							
UNLESS OTHERWISE SPECIFIED DIMENSIONS ARE IN INCHES INTERPRET PER ANSI Y 14.5M-1994	NAME	DATE	TITLE						
	CE DRR	16AUG16	GPS WALL MOUNT						
	RW NSUN	12/02/2025							
	AD YMENG	12/04/2025	SCALE						
	RE YMENG	12/04/2025	DOCUMENT NO.						
ECN 50106034AMO		MTC3899GPS							
SIZE	Auth Group	INSL	MODEL						
C			VERSION	STATUS	REVISION	VERSION	STATUS	REVISION	SHEET
			01	RE	B	01	RE	B	1 OF 1