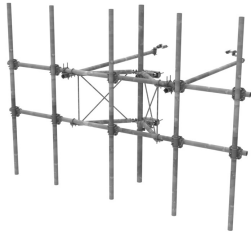


SFG23RHDX14-5-WLL



G23RHDX Tower Sector Frame with spine extension for RRU Mounting, 14.5 ft x 2.88 in OD face pipes, includes five 2.88 OD x 120 in antenna pipes

- Extended spine for SFG23 RHDX mounts that decrease PIM from radio relocation
- Increased versatility and stability
- Updated frame provides higher loading
- More RRU mounting available, reducing need for additional mounts
- Better load management
- Less structure stress
- Can be used in combination with APEX RRU mounts

Product Classification

Product Type	High capacity Tower sector frame
Product Brand	PIM-guard
Product Series	G2
Ordering Note	NSTD445 Compliant

General Specifications

Application	4G LTE antenna/radio mount
Mounting	Angle 60°, 203.2 mm (8 in) Straight or tapered legs up to 203.2 mm (8 in) OD
Patent Number	Patent pending
Pipe, quantity	5
Sectors, quantity	1
Tower Taper	Non-tapered Tapered

Dimensions

Height	3,048 mm 120 in
Face Width	4.42 m 14.5 ft
Width	4,419.6 mm 174 in
Pipe Length	3,048 mm 120 in
Face Support Pipe Diameter	73.025 mm 2.875 in
Mounting Diameter, maximum	218.44 mm 8.6 in

SFG23RHDX14-5-WLL

Mounting Diameter, minimum	38.1 mm 1.5 in
Pipe Outer Diameter	73.025 mm 2.875 in
Stand-off Distance	1,066.8 mm 42 in

Material Specifications

Material Type	Hot dip galvanized steel
----------------------	--------------------------

Mechanical Specifications

Wind Rating	For Specifications, please contact your local ANDREW representative
--------------------	---

Packaging and Weights

Included	Antenna mounting pipes Crossover plates Frame Stiff arms (2) Tower attachment
Packaging quantity	1

Regulatory Compliance/Certifications

Agency	Classification
CHINA-ROHS	Above maximum concentration value
ROHS	Compliant/Exempted
UK-ROHS	Compliant/Exempted



* Footnotes

Wind Rating	BWS—Base Wind Speed; FBC—Florida Building Code
--------------------	--