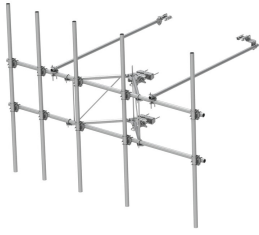


SFG22HDX14-5-WLL



G22HDX High Capacity Sector Frame with 2 7/8in OD x 14.5ft face.
Includes five 2 7/8in OD x 120in antenna pipes.

Product Classification

Product Type	High capacity Tower sector frame
Product Series	G2

General Specifications

Application	4G LTE antenna/radio mount
Mounting	Angle 60°, 203.2 mm (8 in) Straight or tapered legs up to 203.2 mm (8 in) OD
Patent Number	Patent pending
Pipe, quantity	5
Sectors, quantity	1
Tower Taper	Non-tapered Tapered

Dimensions

Height	3,048 mm 120 in
Face Width	4.42 m 14.5 ft
Width	4,419.6 mm 174 in
Pipe Length	3,048 mm 120 in
Face Support Pipe Diameter	73.025 mm 2.875 in
Mounting Diameter, maximum	218.44 mm 8.6 in
Mounting Diameter, minimum	38.1 mm 1.5 in
Pipe Outer Diameter	73.025 mm 2.875 in
Stand-off Distance	1,066.8 mm 42 in

Material Specifications

Material Type	Hot dip galvanized steel
----------------------	--------------------------

Mechanical Specifications

Wind Rating	For Specifications, please contact your local ANDREW representative
--------------------	---

SFG22HDX14-5-WLL

Wind Rating Test Method

TIA/EIA-222-G

Packaging and Weights

Included

Antenna mounting pipes | Frame | Pipe mounts | Stiff arms (2) | Tower attachment

Packaging quantity

1

Regulatory Compliance/Certifications

Agency

Classification

CHINA-ROHS

Above maximum concentration value

ROHS

Compliant/Exempted

UK-ROHS

Compliant/Exempted



* Footnotes

Wind Rating

BWS—Base Wind Speed; FBC—Florida Building Code