

# CM-L30-63

---



Light Duty Chain Mount Kit, 14 in stand-ff, 8 ft chain, includes pipe

## Product Classification

**Product Type** Chain mount kit

## General Specifications

**Chains, quantity** 2

**Pipe, quantity** 1

**Sectors, quantity** 1

## Dimensions

**Height** 152.4 mm | 6 in

**Width** 203.2 mm | 8 in

**Length** 1,600.2 mm | 63 in

**Chain Length** 2,400.3 mm | 94.5 in

**Pipe Length** 1,600.2 mm | 63 in

**Mounting Diameter, maximum** 762 mm | 30 in

**Mounting Diameter, minimum** 203.2 mm | 8 in

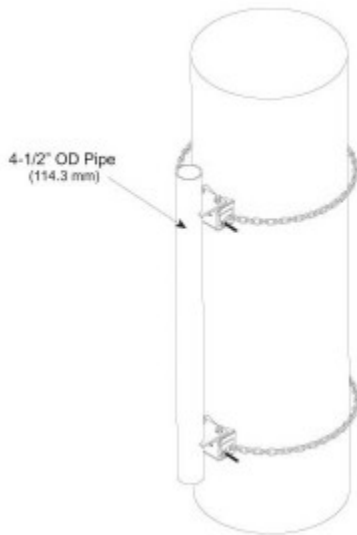
**Pipe Outer Diameter** 114.3 mm | 4.5 in

**Mounting Circumference, maximum** 2,392.68 mm | 94.2 in

**Mounting Circumference, minimum** 635 mm | 25 in

# CM-L30-63

## Outline Drawing



## Material Specifications

**Material Type** Hot dip galvanized steel

## Mechanical Specifications

**Wind Rating** 120 mph (BWS) at 100 ft AGL

**Wind Rating Criteria** One 2 ft standard microwave antenna, with radome and stiff arm

**Wind Rating Test Method** TIA/EIA-222

## Packaging and Weights

**Included** Chains | Pipe mounts

**Packaging quantity** 1

**Weight, net** 41.1 kg | 90.61 lb

## Regulatory Compliance/Certifications

Agency	Classification
ISO 9001:2015	Designed, manufactured and/or distributed under this quality management system

## Included Products

CM-L30-B – Light Duty Chain Mount Base Kit, 8 ft chain

# CM-L30-63

---

MT-395 - Standard Pipe Mount, 4-1/2 in OD x 63 in

## \* Footnotes

**Wind Rating** BWS—Base Wind Speed; FBC—Florida Building Code