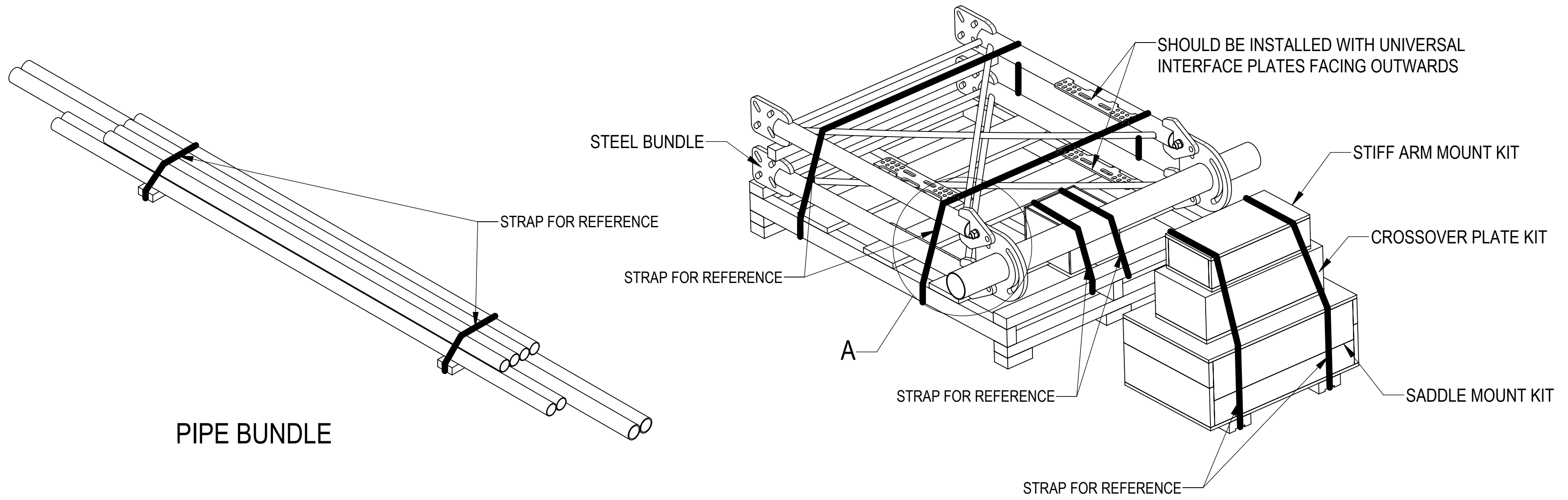
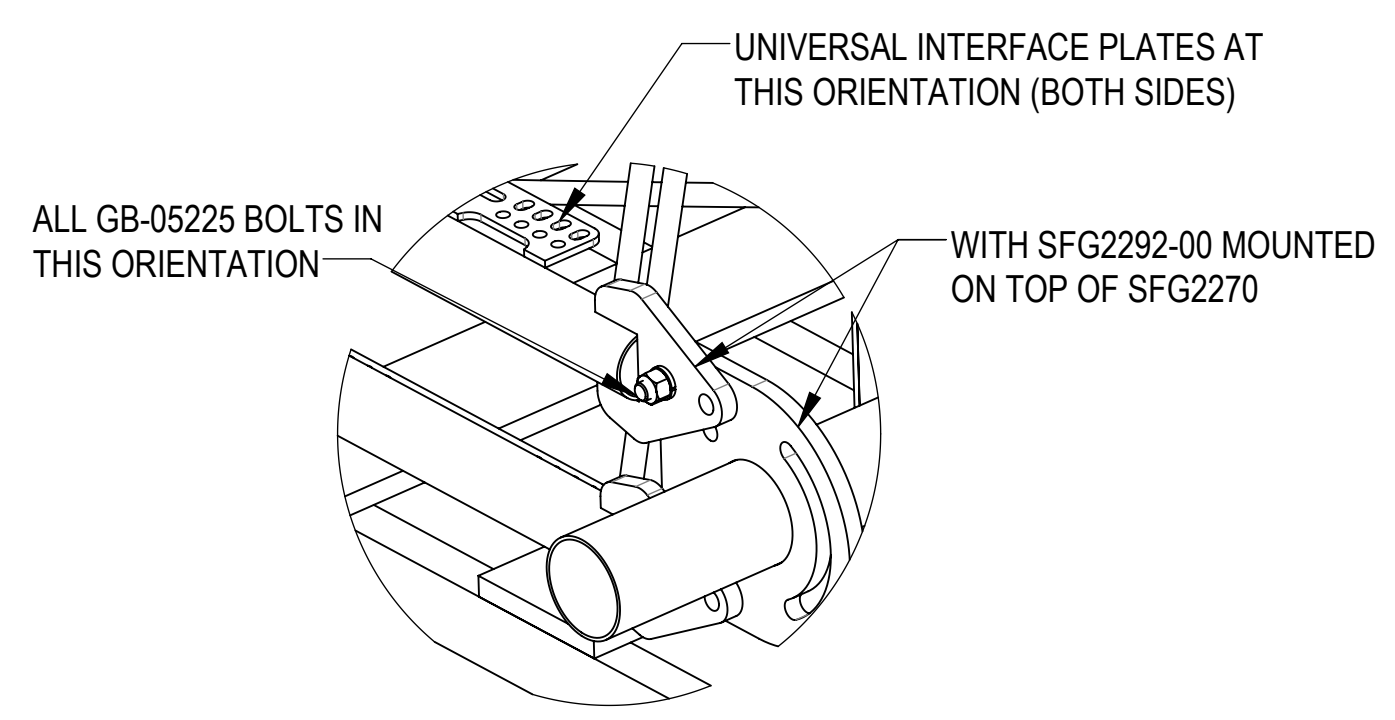


- 1.0 GENERAL NOTES
 1.1 ALL METRIC DIMENSIONS ARE IN BRACKETS [X. X]
 1.2 FOR PATENT INFO: <https://www.cs-pat.com>
- 2.0 DESIGN NOTES
 2.1 ANY HAZARDS OR OBSTRUCTIONS TO THE CLIMBING FACILITY AND SAFETY CLIMB MUST BE IDENTIFIED PRIOR TO INSTALLING THE APPURTENANCE. ADDITIONAL PRODUCTS MAY BE REQUIRED TO MAINTAIN THE INTEGRITY OF THE SAFETY CLIMB. DURING INSTALLATION, TEMPORARY AND/OR PERMANENT PRECAUTIONARY MEASURES SHOULD BE TAKEN TO PRESERVE THE CLIMBING FACILITY AND/OR SAFETY CLIMB.
 2.2 UP TO 5.0° TAPER AVAILABLE ON MODELS THAT SUPPORT ADJUSTMENT
- 3.0 MANUFACTURING/SPECIAL REQUIREMENTS
 3.1 TIGHTEN ALL BOLTS SECURING FLAT PLATES BY THE TURN-OF-NUT METHOD. TIGHTEN ALL U-BOLTS USING TURN-OF-NUT METHOD WITH ATTENTION TO LEAVE EQUAL DISTANCE AND EQUAL FORCE ON EACH LEG OF THE U-BOLT.
- 4.0 TEST
- 5.0 PACKAGING
 5.1 PACKAGING SHALL MEET COMMSCOPE REQUIREMENTS PER DOCUMENT IS-PL-3005.
 5.2 PRINTED DOCUMENT TO BE PLACED INSIDE POLYBAG AND THEN IN SHIPPING CONTAINER.
 5.3 EXTRA HARDWARE MAY BE SUPPLIED, BAGGED AND SHIPPED.

REVISIONS			
REV.	DESCRIPTION	DATE	ECN
D	CHG QTY SFG2386 TO 1EA, AND GUB-4355 TO 3EA; ADDED SFG2397-00; SFG2270 WAS SFG2290-00, SFG2278 WAS SFG2292-00; ADDED SFG2254 TO THE TOP OF V-ARM	RY1002 14SEP23	YW1045 40178978CMO
E	SHEET2: ADDED SFG2254 TO TABLE 1; SHEET5: ADDED LABEL INSTALLATION NOTICE	JL1183 17NOV23	YW1045 40183325CMO
F	SFG2292-00 (ITEM4) WAS SFG2278; ADDED SHEET5 & 6; SHEET2: UPDATED TABLE 1 TO ADD SFG22HD12-5-WLL	YX1027 06NOV24	BA1025 40208036CMO



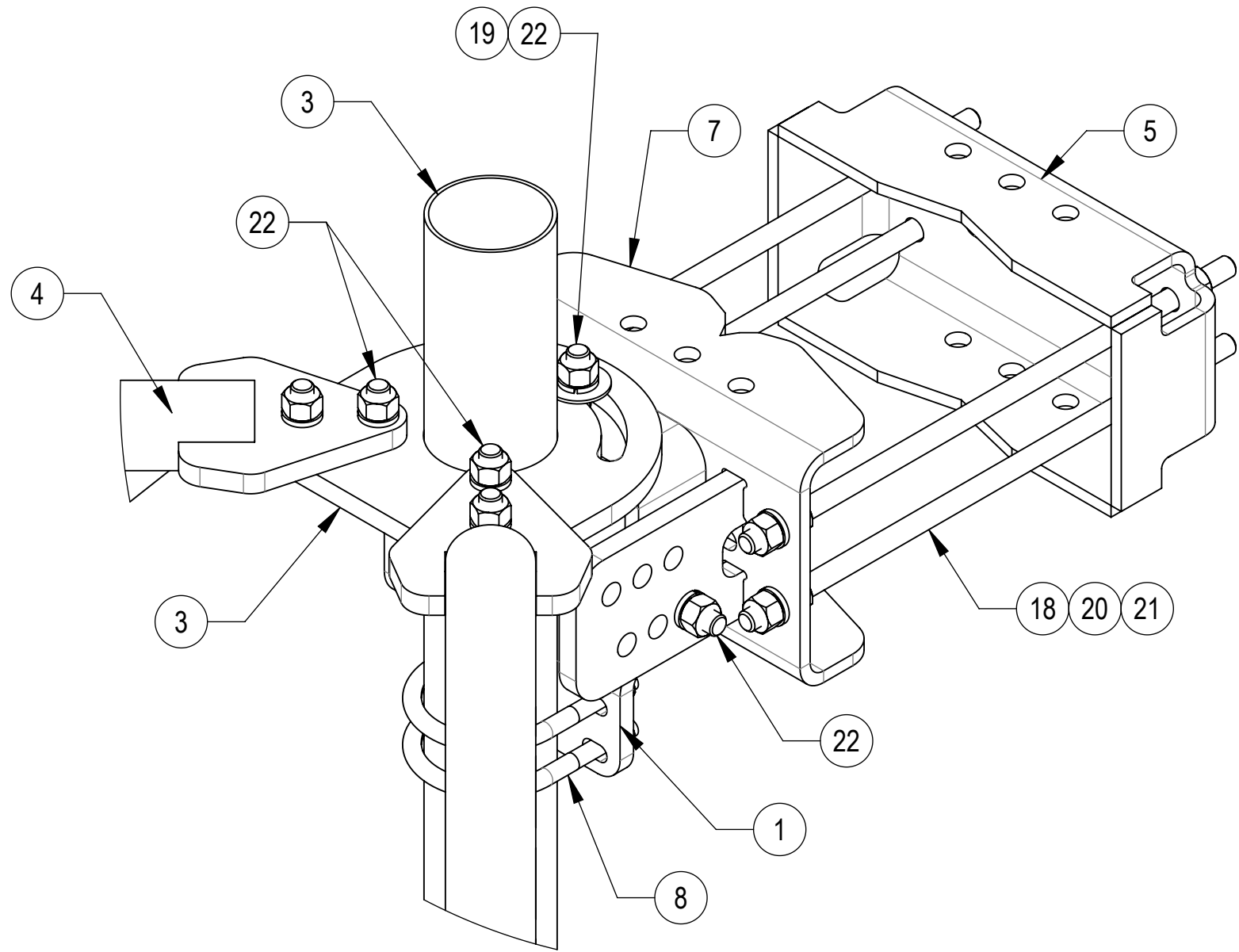
PIPE BUNDLE



DETAIL A SCALE 1 : 6

COMMSCOPE, INC. OF NORTH CAROLINA											
TOLERANCES						SAP MATERIAL MASTER					
1 PLACE .X[X] ± 0.25[6.3]			3 PLACE .XXX[X] ± 0.06[1.5]			SEE TABLE					
2 PLACE .XX[X] ± 0.12[3.0]			ANGLES ± 2°								
FINISH						MATERIAL					
UNLESS OTHERWISE SPECIFIED DIMENSIONS ARE IN INCHES INTERPRET PER ANSI Y 14.5M-1994	NAME		DATE		TITLE						
	CE	RJC	12/13/18		SFG22HD SECTOR FRAME SERIES						
	RW	YX1027	12/19/2024								
	AD	YMENG	12/19/2024								
	RE	YMENG	12/19/2024								
ECN	40208036CMO										
SCALE		DOCUMENT NO.		SFG22HD							
1:10											
SIZE		Auth Group		INSL		MODEL		DRAWING			
C		⊕		◁		VERSION		STATUS		REVISION	
						03		RE		B	
						11		RE		F	
										1 OF 12	

DENSITY	lbs/in³
MASS	lbs
VOLUME	in³
SURFACE AREA	in²
HEIGHT	326 mm
LENGTH	131 mm
WIDTH	107 mm

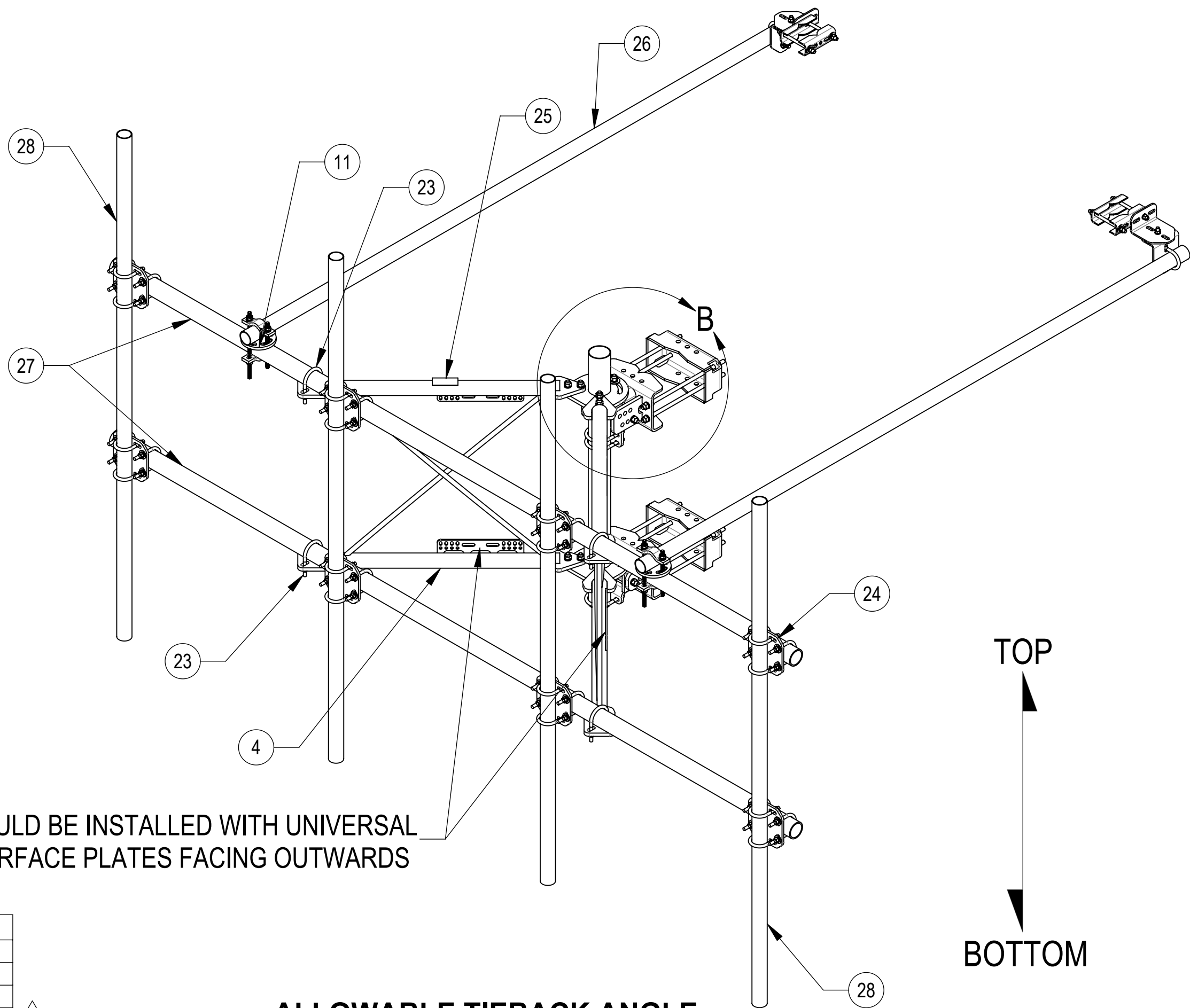


DETAIL B
SCALE 1 : 4

SFG22HD-12-4-96 SHOWN FOR REFERENCE
(NOT ALL CONFIGURATIONS INCLUDE ALL ITEMS SEE NOTES IN TABLE)

COMPONENT PART NUMBERS PROVIDED FOR ASSEMBLY PURPOSES;
INDIVIDUAL COMPONENTS MAY BE SHIPPED AS PARTS WITHIN AN INCLUDED KIT.

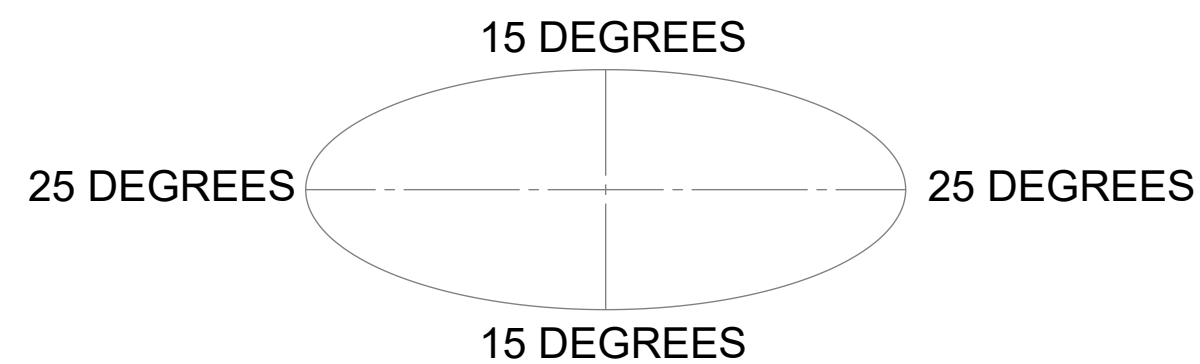
ITEM	PART NO.	DESCRIPTION	QTY.	WEIGHT	NOTE NO.
1	SFG2386	WELDMENT, SFG2 AZIMUTH BRACKET	1	10.07 LBS	
2	SFG2397-00	WELDMENT, G23 AZIMUTH BRACKET	1	7.94 LBS	
3	SFG2270	BACK VERTICAL ARM MOUNT	1	39.26 LBS	
4	SFG2292-00	WELDMENT, V-ARM, SECTOR FRAME 22	2	49.69 LBS	
5	SFG2289	G2 RRU BACK CLAMP, HD	2	18.65 LBS	
6	SFG2381	WELDMENT, HD, LOWER TOWER LEG BRACKET	1	17.42 LBS	
7	SFG2380	WELDMENT, HD, TOP TAPER BRACKET	1	22.78 LBS	
8	GUB-4355	1/2" X 3-5/8" X 5" GALV U-BOLT	3	0.71 LBS	
9	XAU01	ANGLE, CROSSOVER, 1.9-3.5" X 1.9-3.5" OD	4	2.98 LBS	
10	GUB-4240	1/2" X 2-1/2" X 4" GALV U-BOLT	2	0.56 LBS	
11	XP-R	CROSSOVER PLATE, ROUND, UP TO 3.5" OD	2	6.20 LBS	
12	SAB01	FORMED CLAMP	4	1.35 LBS	
13	MT-379-8	1/2" X 8" GALV THREADED ROD	4	0.45 LBS	
14	GWF-04	1/2" GALV FLAT WASHER	8	0.04 LBS	
15	GWL-04	1/2" GALV LOCK WASHER	10	0.01 LBS	
16	GN-04	1/2" GALV HEX NUT	10	0.04 LBS	
17	GB-04145	1/2" X 1-1/2" GALV BOLT KIT	2	0.13 LBS	
18	MT-382-18	5/8" X 18" THREADED ROD	8	1.43 LBS	
19	GWF-05	5/8" GALV FLAT WASHER, 1.7OD	2	0.06 LBS	
20	GWL-05	5/8" GALV LOCK WASHER	16	0.03 LBS	
21	GN-05	5/8" GALV HEX NUT	24	0.08 LBS	
22	GB-05225	5/8" X 2-1/4" GALV BOLT KIT	14	0.28 LBS	
23	GUB-4352	1/2" X 3" X 5-1/4" GALV U-BOLT	4	0.71 LBS	
24	XP-2025	CROSSOVER PLATE KIT, 2-3/8 OD X 2-7/8 OD	8	8.07 LBS	QTY SEE INDIVIDUAL DRAWING
25	SFG2254	LABEL, SFG22HD	1	0.04 LBS	
26	MT-651-120	PIPE, 2.375"OD X 120"	2	29.07 LBS	PART NO. SEE INDIVIDUAL DRAWING
27	MT-546-150	PIPE, 2.875"OD X 150"	2	72.67 LBS	PART NO. SEE INDIVIDUAL DRAWING
28	MT-651-96	2.375" OD X 96" PIPE	4	23.05 LBS	PART NO. AND QTY SEE INDIVIDUAL DRAWING



SHOULD BE INSTALLED WITH UNIVERSAL
INTERFACE PLATES FACING OUTWARDS

ALLOWABLE TIEBACK ANGLE

±15 DEGREES VERTICAL
±25 DEGREES HORIZONTAL



COMMSCOPE, INC. OF NORTH CAROLINA

TITLE
SFG22HD SECTOR FRAME SERIES

SIZE **C** SCALE **1:14** DOCUMENT NO. **SFG22HD**

DRAWING	VERSION	STATUS	REVISION	SHEET 3 OF 12
	11	RE	F	

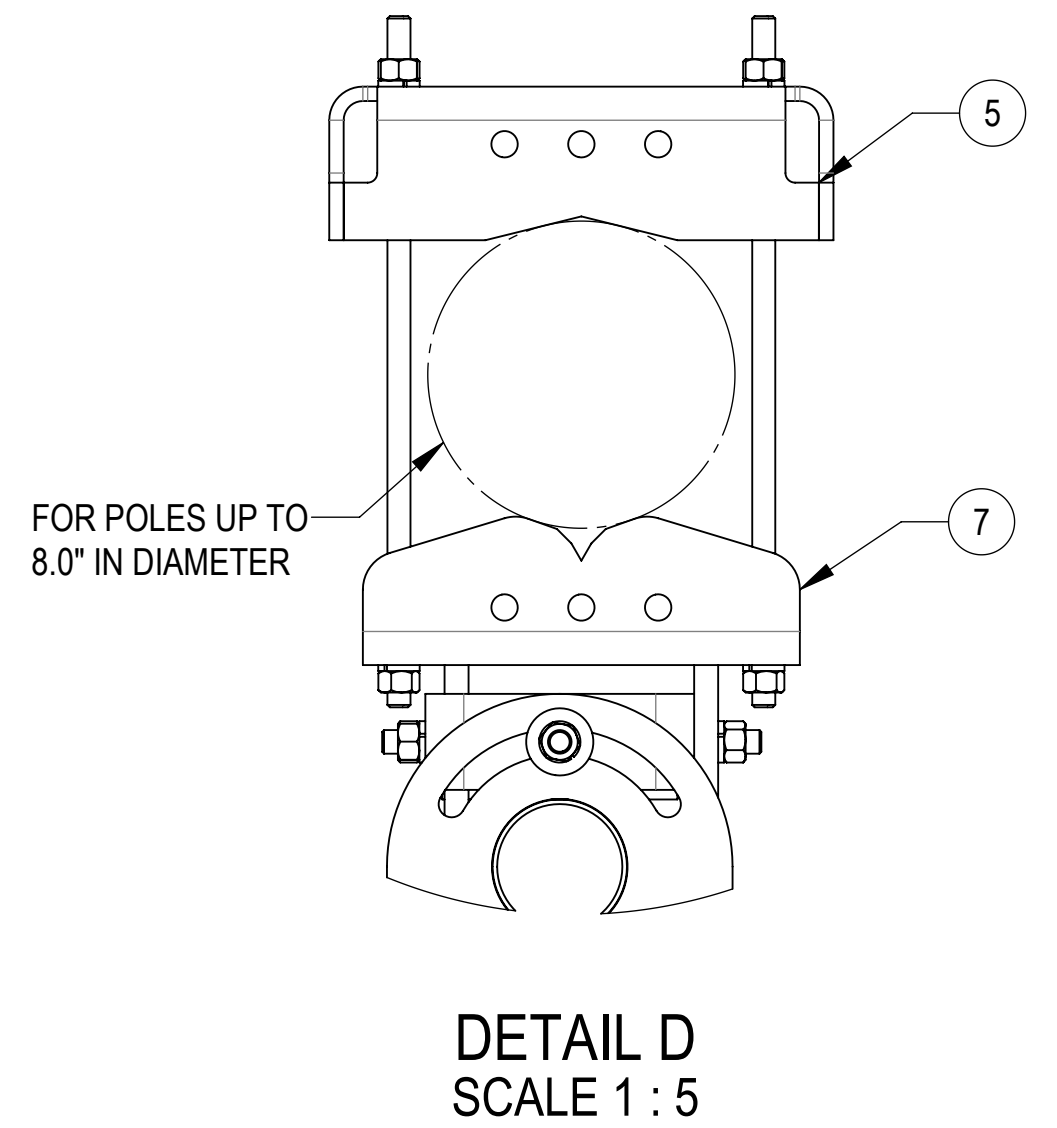
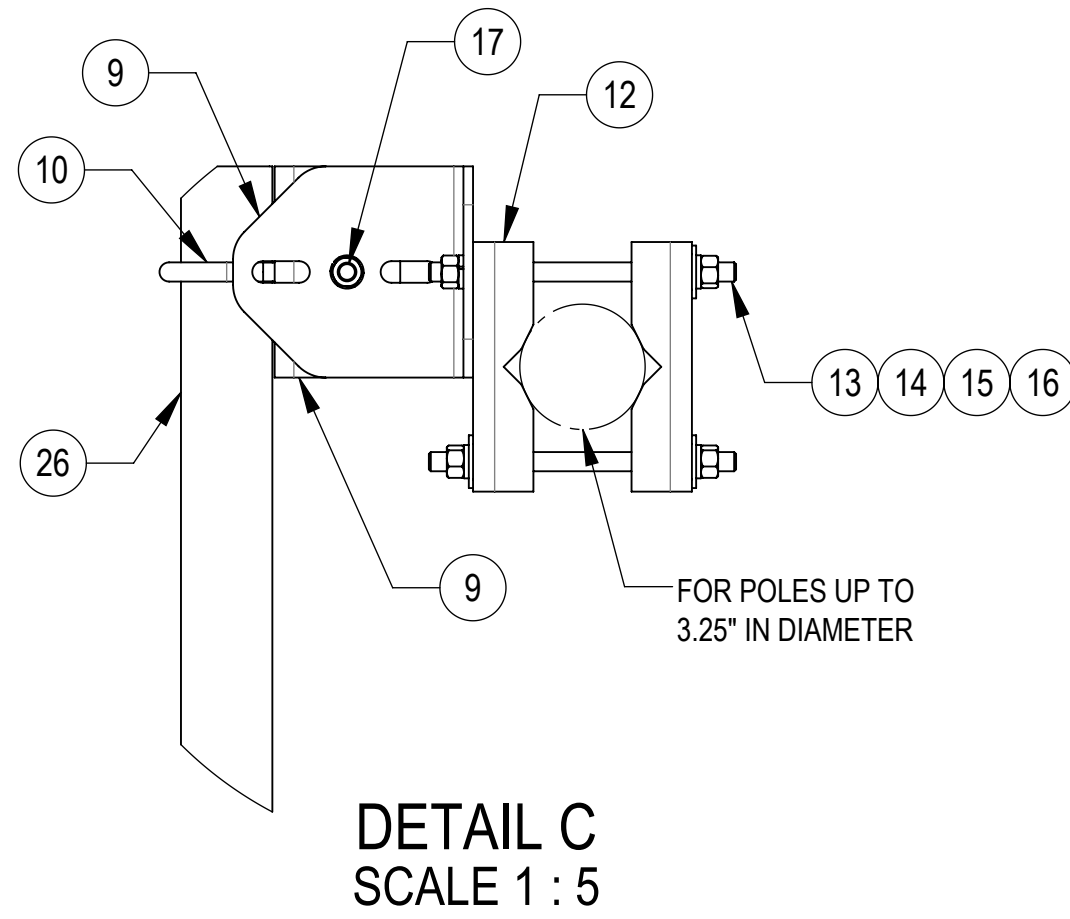
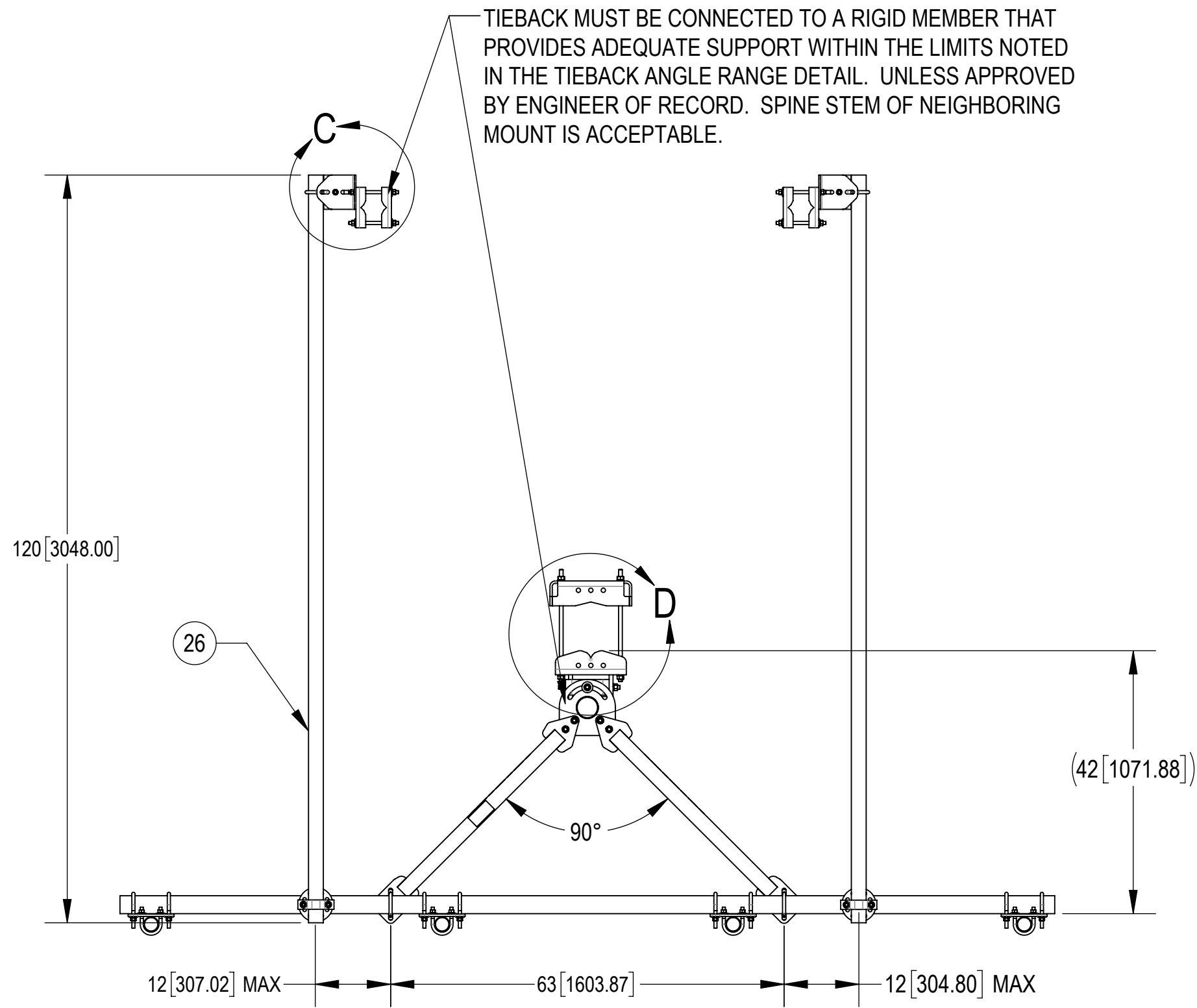
4

3

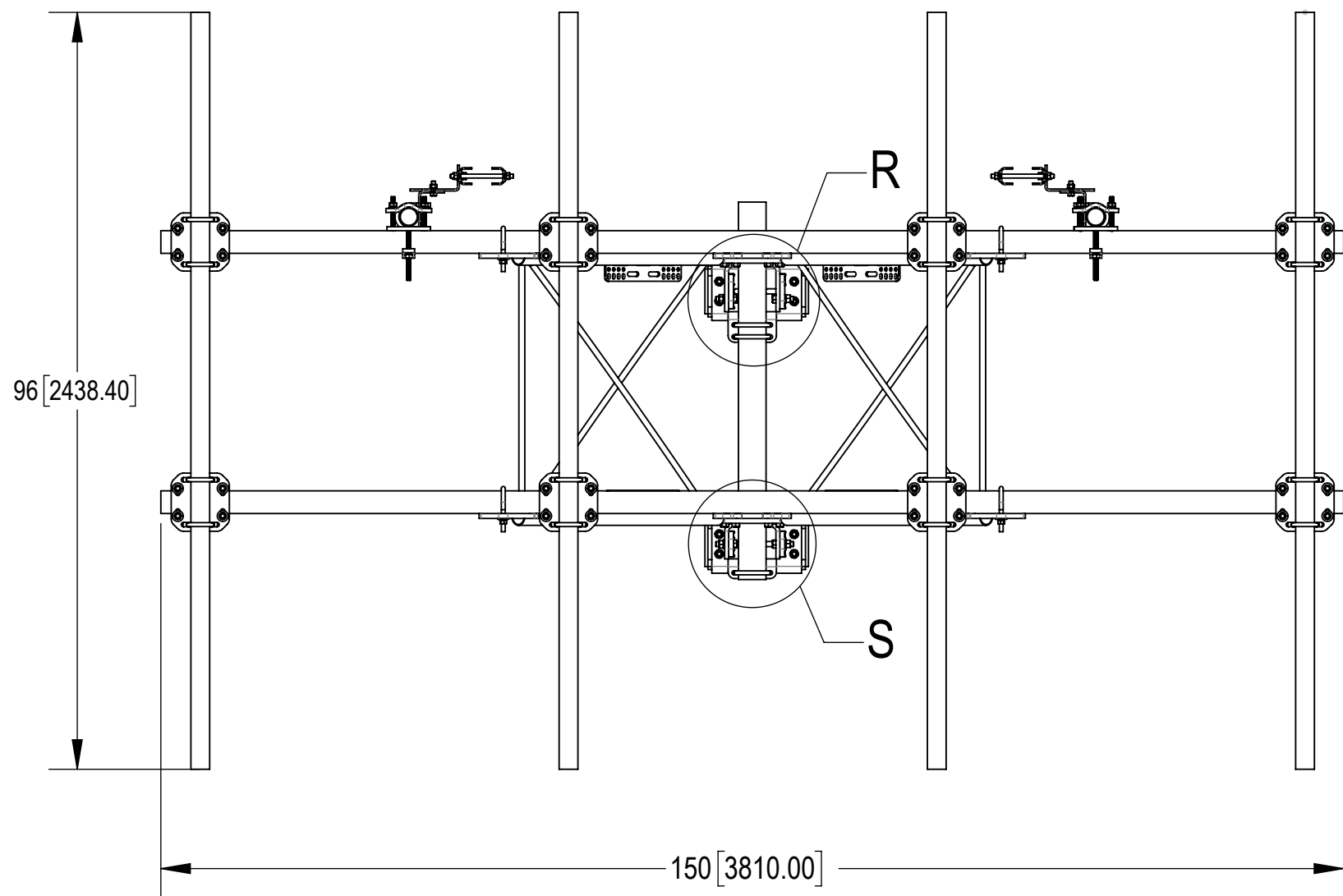
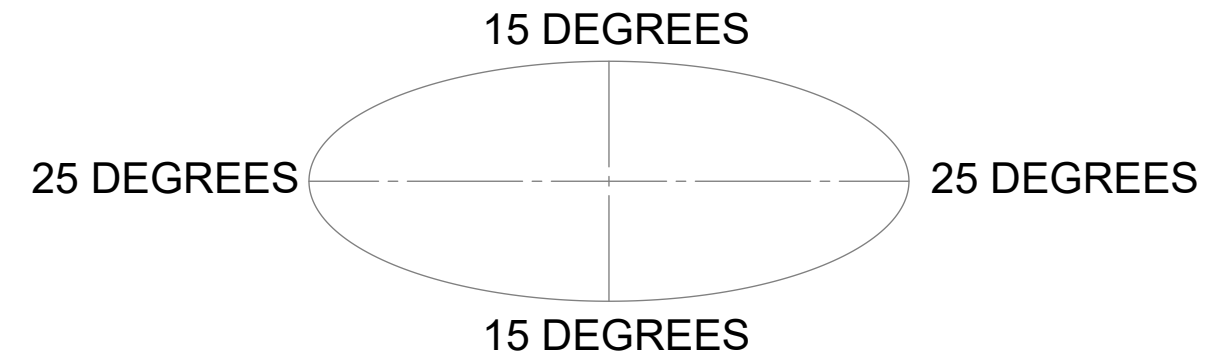
2

1

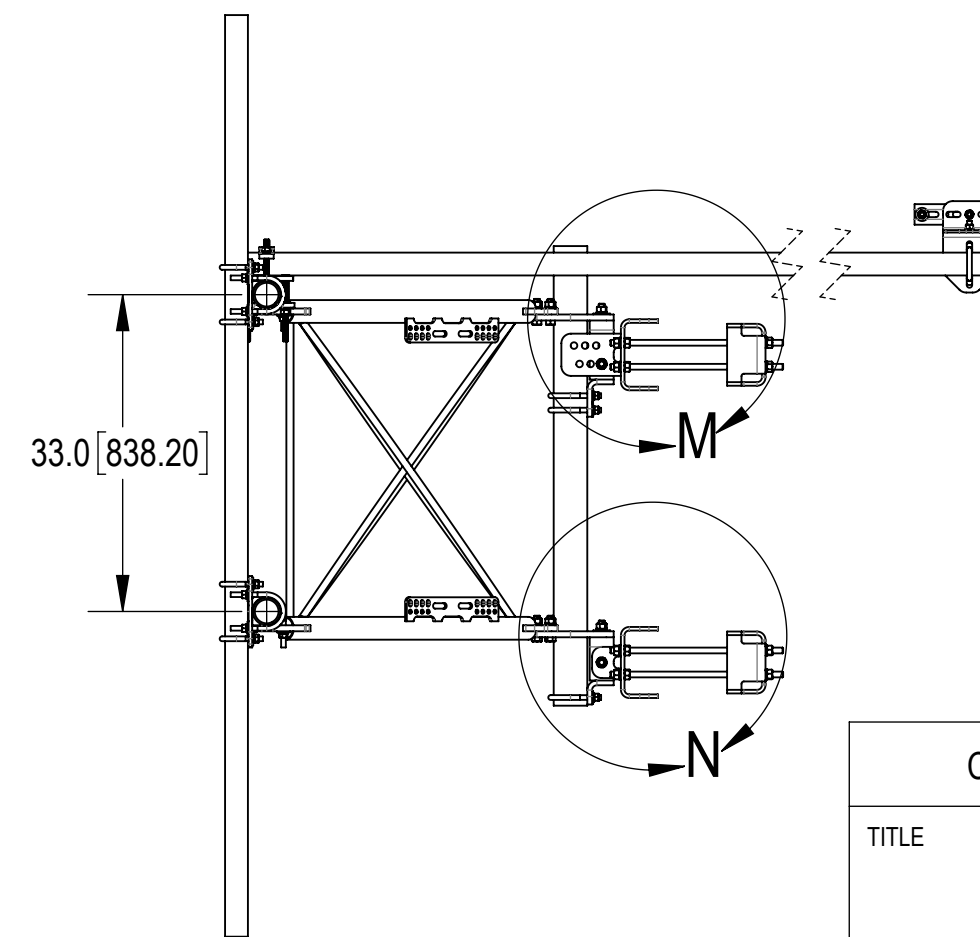
TIEBACK MUST BE CONNECTED TO A RIGID MEMBER THAT PROVIDES ADEQUATE SUPPORT WITHIN THE LIMITS NOTED IN THE TIEBACK ANGLE RANGE DETAIL. UNLESS APPROVED BY ENGINEER OF RECORD. SPINE STEM OF NEIGHBORING MOUNT IS ACCEPTABLE.



ALLOWABLE TIEBACK ANGLE
± 15 DEGREES VERTICAL
± 25 DEGREES HORIZONTAL



TOP
↓
BOTTOM



SFG22HD-12-4-96 SHOWN FOR REFERENCE
(NOT ALL CONFIGURATIONS INCLUDE ALL ITEMS
SEE NOTES IN TABLE ON PAGE 3)

© 2023 CommScope, Inc. Confidential

COMMSCOPE, INC. OF NORTH CAROLINA				
TITLE SFG22HD SECTOR FRAME SERIES				
SIZE C	SCALE 1:20	DOCUMENT NO. SFG22HD		
		DRAWING		SHEET
		VERSION	STATUS	REVISION
		11	RE	F
				4 OF 12

4

3

2

1

4

3

2

1

D

D

C

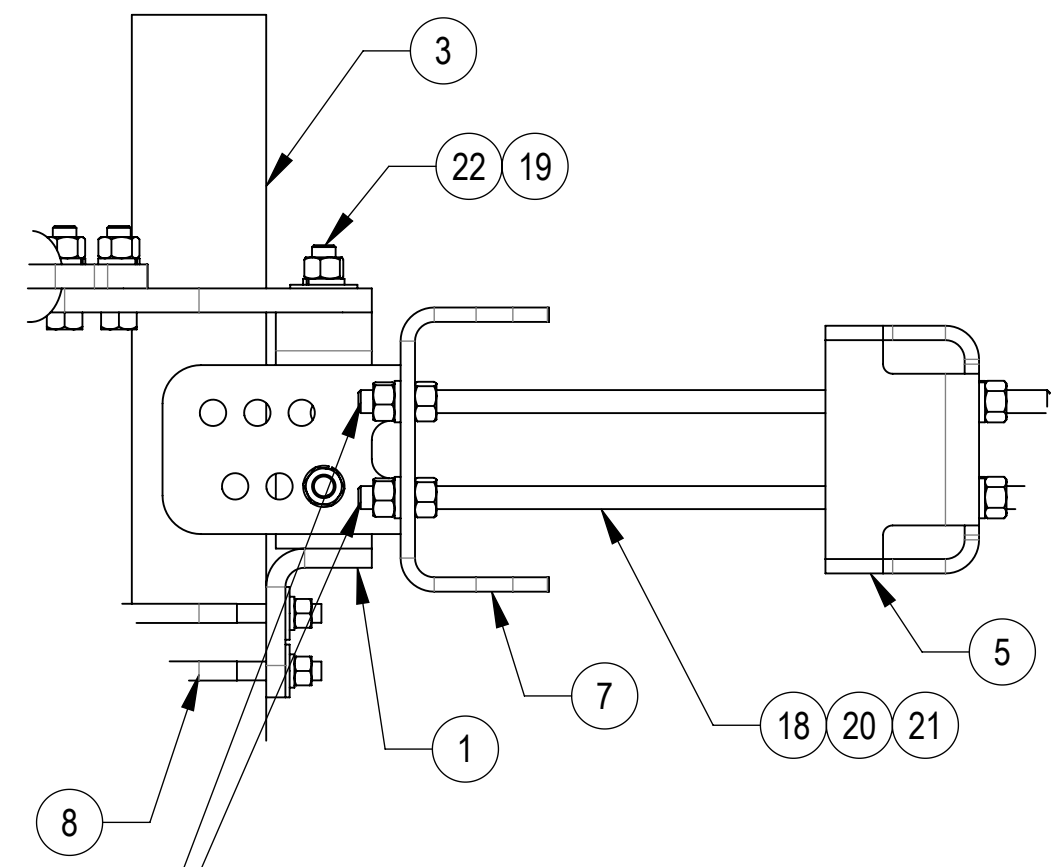
C

B

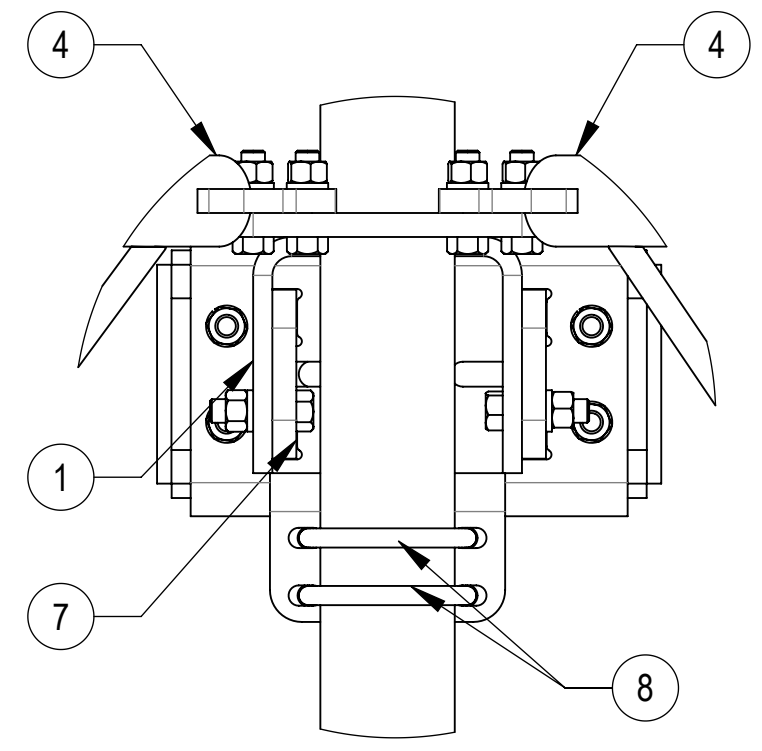
B

A

A

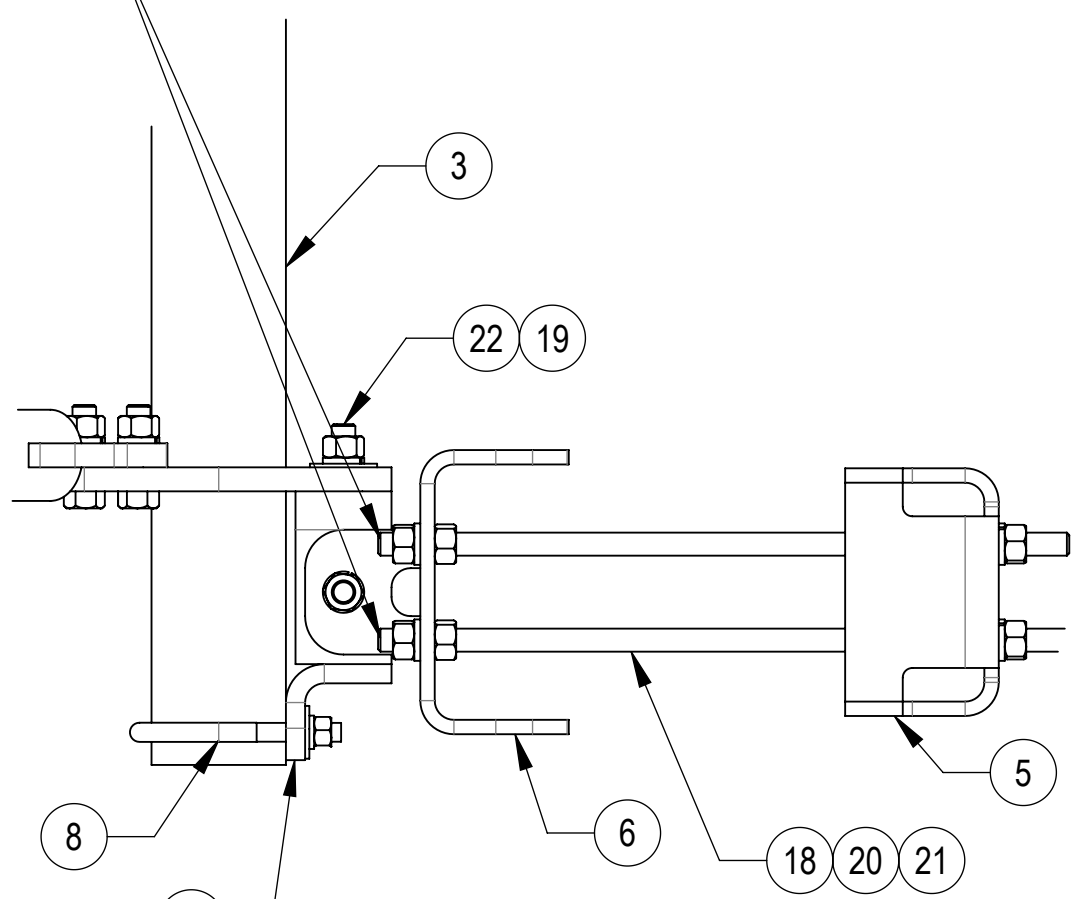


DETAIL M
SCALE 1 : 5

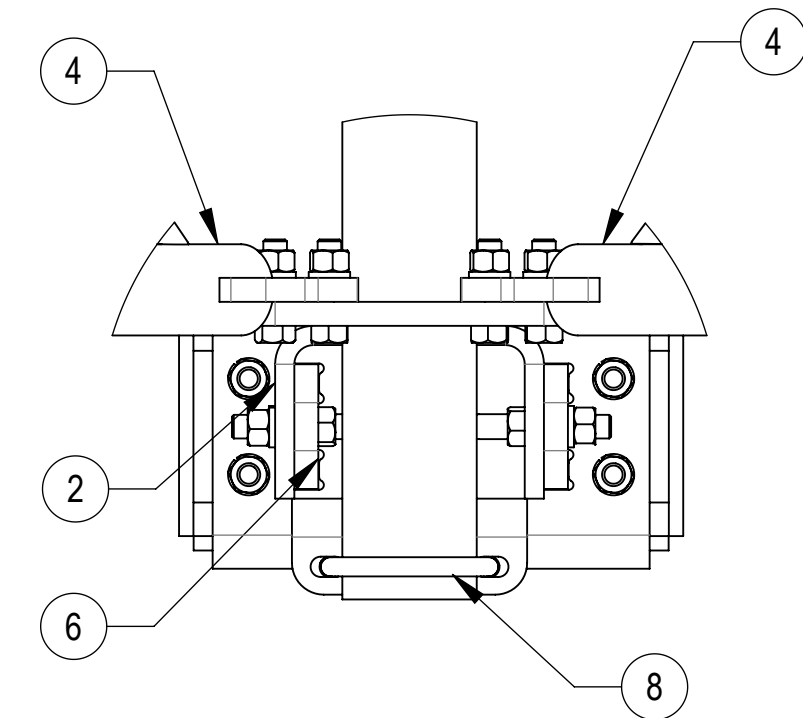


DETAIL R
SCALE 1 : 5

THE THREADED ROD CAN ONLY EXPOSE 4 TO 7 THREADS ON ONE SIDE OF THE BRACKET, WHICH IS TO PREVENT INTERFERENCE WITH THE SIDE BOLTS

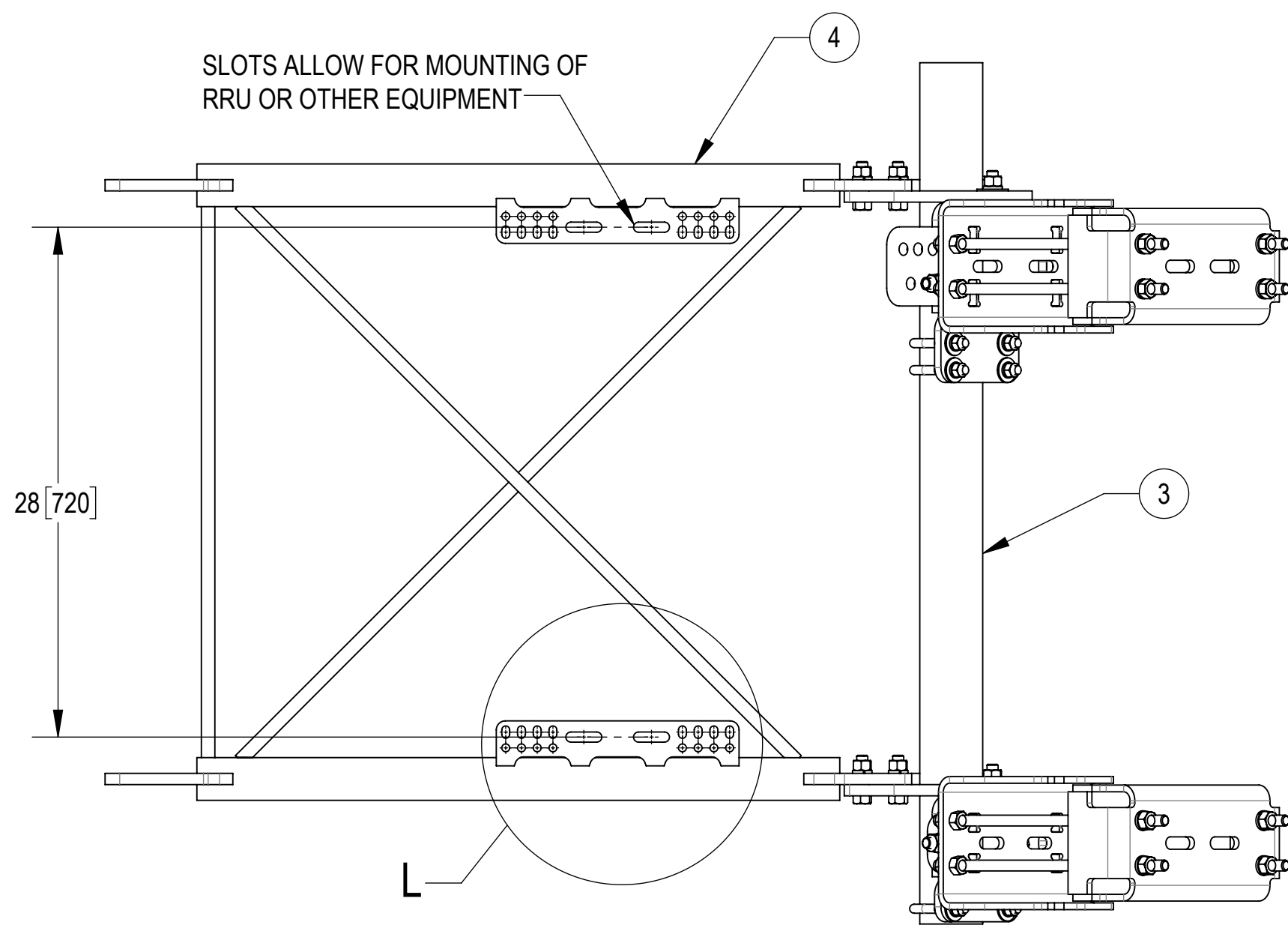


DETAIL N
SCALE 1 : 5

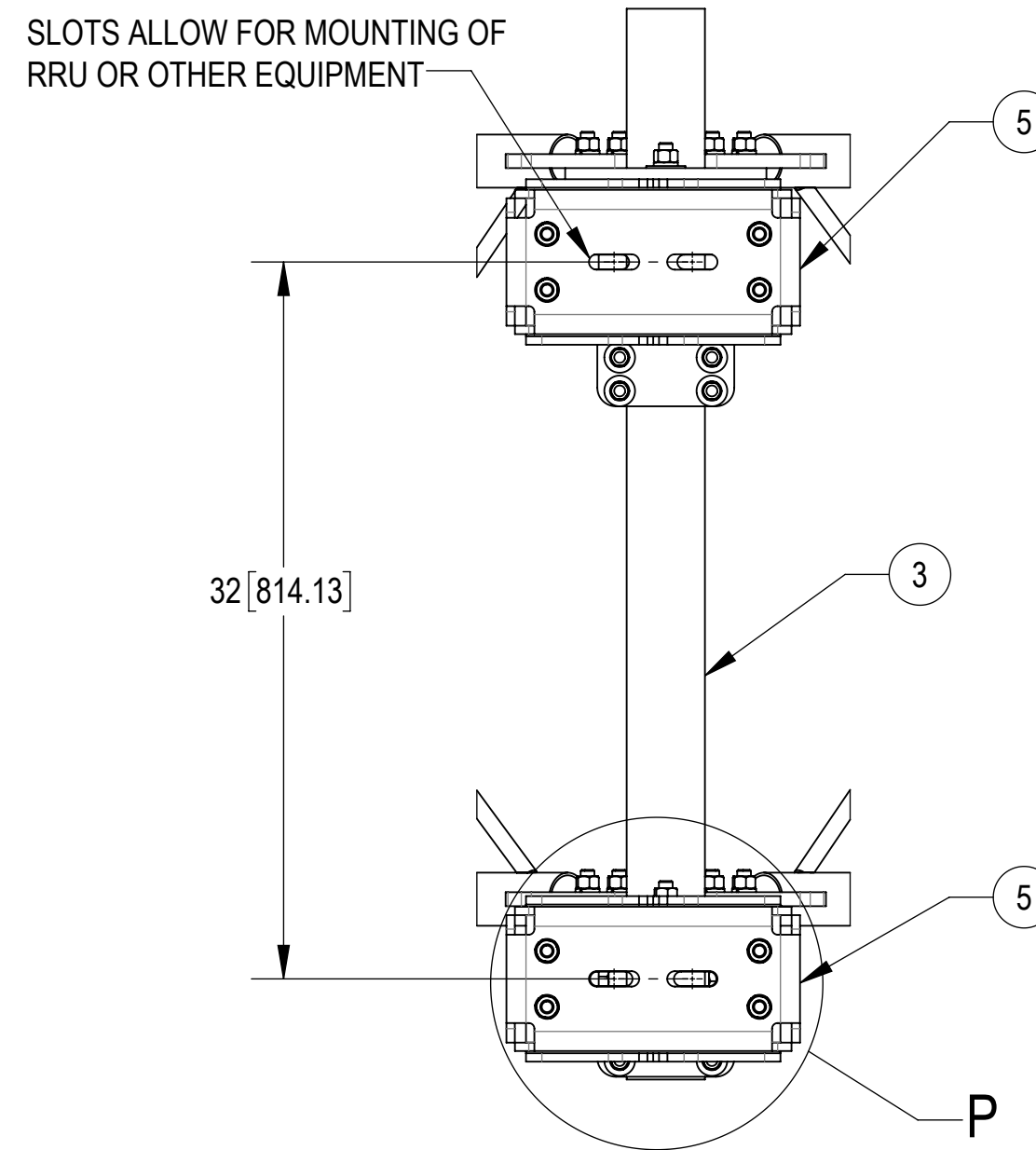


DETAIL S
SCALE 1 : 5

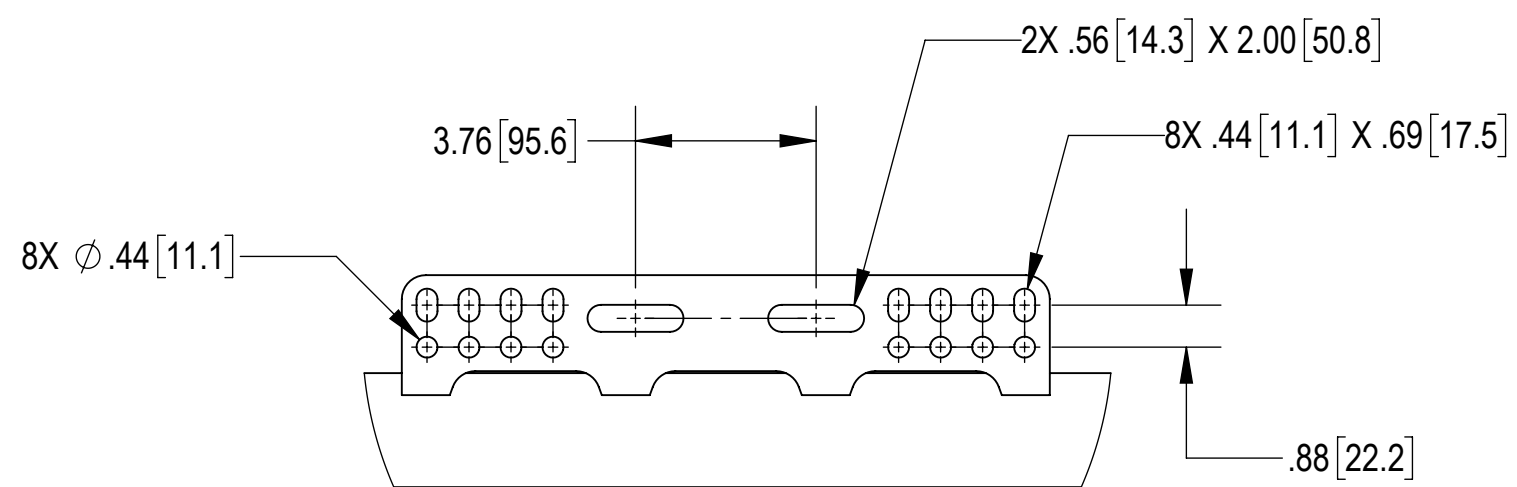
COMMSCOPE, INC. OF NORTH CAROLINA				
TITLE SFG22HD SECTOR FRAME SERIES				
SIZE C	SCALE 1:4	DOCUMENT NO. SFG22HD		
		DRAWING		SHEET 5 OF 12
		VERSION 11	STATUS RE	



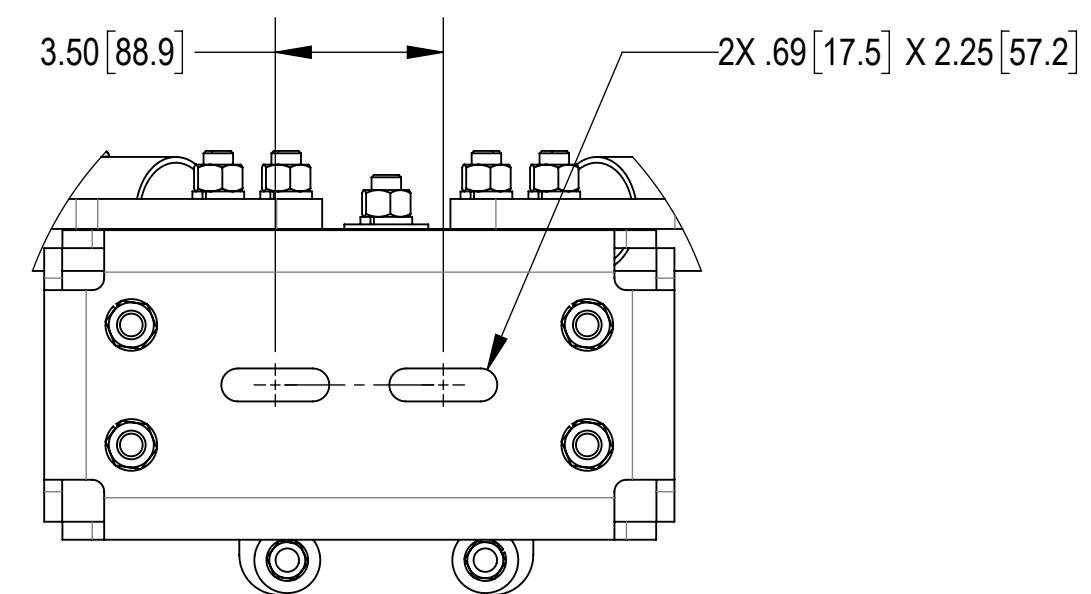
SIDE VIEW



BACK CROP VIEW



DETAIL L
SCALE 1 : 4

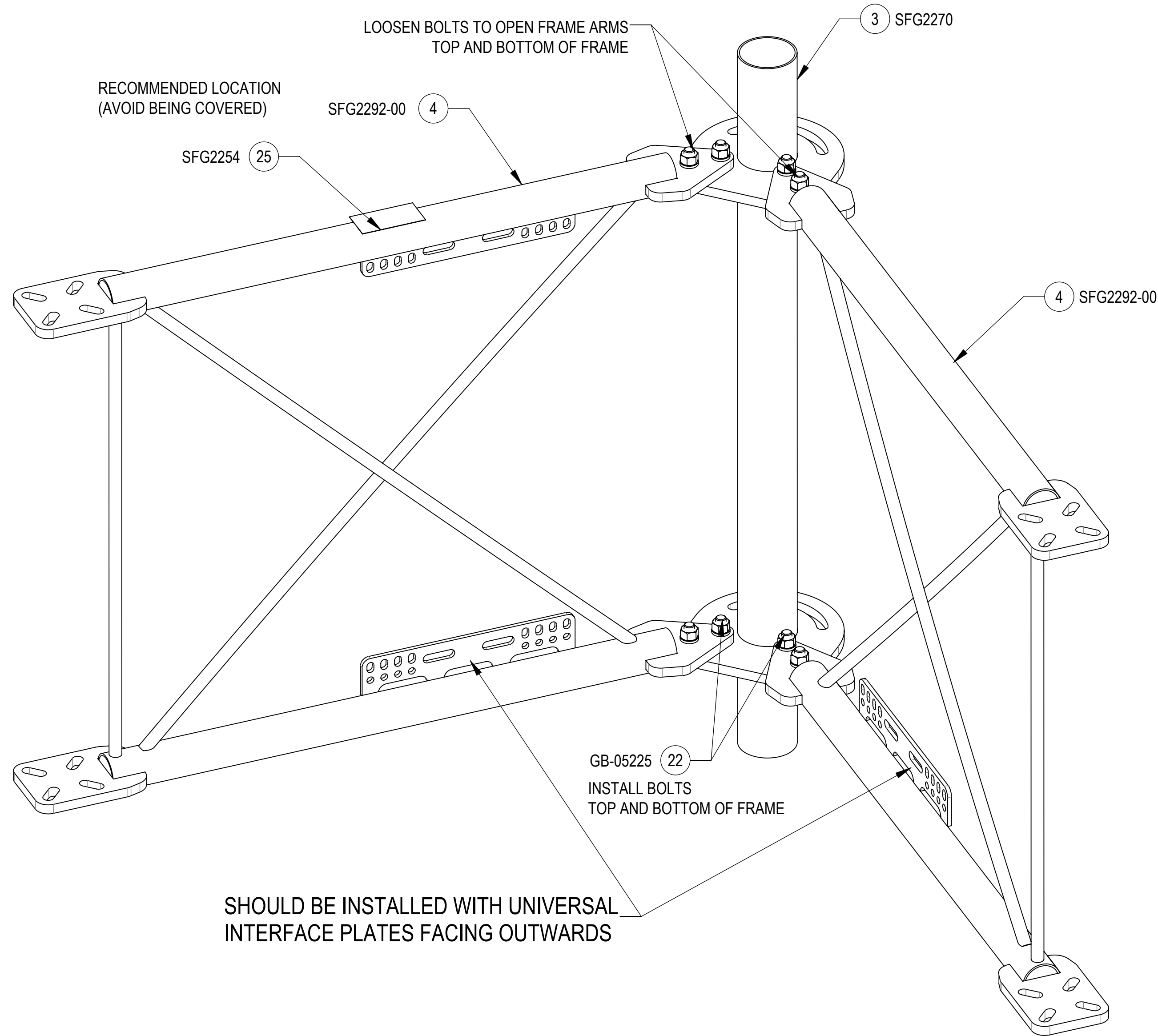


DETAIL P
SCALE 1 : 4

COMMSCOPE, INC. OF NORTH CAROLINA				
TITLE SFG22HD SECTOR FRAME SERIES				
SIZE C	SCALE 1:24	DOCUMENT NO. SFG22HD		
DRAWING		REVISION		SHEET
VERSION	STATUS	REVISION	6 OF 12	
11	RE	F		

INSTALLATION SEQUENCE - REFERENCE ONLY

STEP 1: LOOSEN BOLT KITS (GB-05225) TO OPEN FRAME SUPPORT ARMS. INSTALL ADDITIONAL 4X BOLT KITS (GB-05225).
 PLACE LABEL (SFG2254) ON TOP OF STANDOFF ARMS (SFG2292-00). (WIPE GALVANIZED SURFACE WITH ALCOHOL CLEANER BEFORE APPLYING LABEL)



ISO VIEW

COMMSCOPE, INC. OF NORTH CAROLINA				
TITLE SFG22HD SECTOR FRAME SERIES				
SIZE C	SCALE 1:4	DOCUMENT NO. SFG22HD		
		DRAWING		SHEET 7 OF 12
		VERSION 11	STATUS RE	

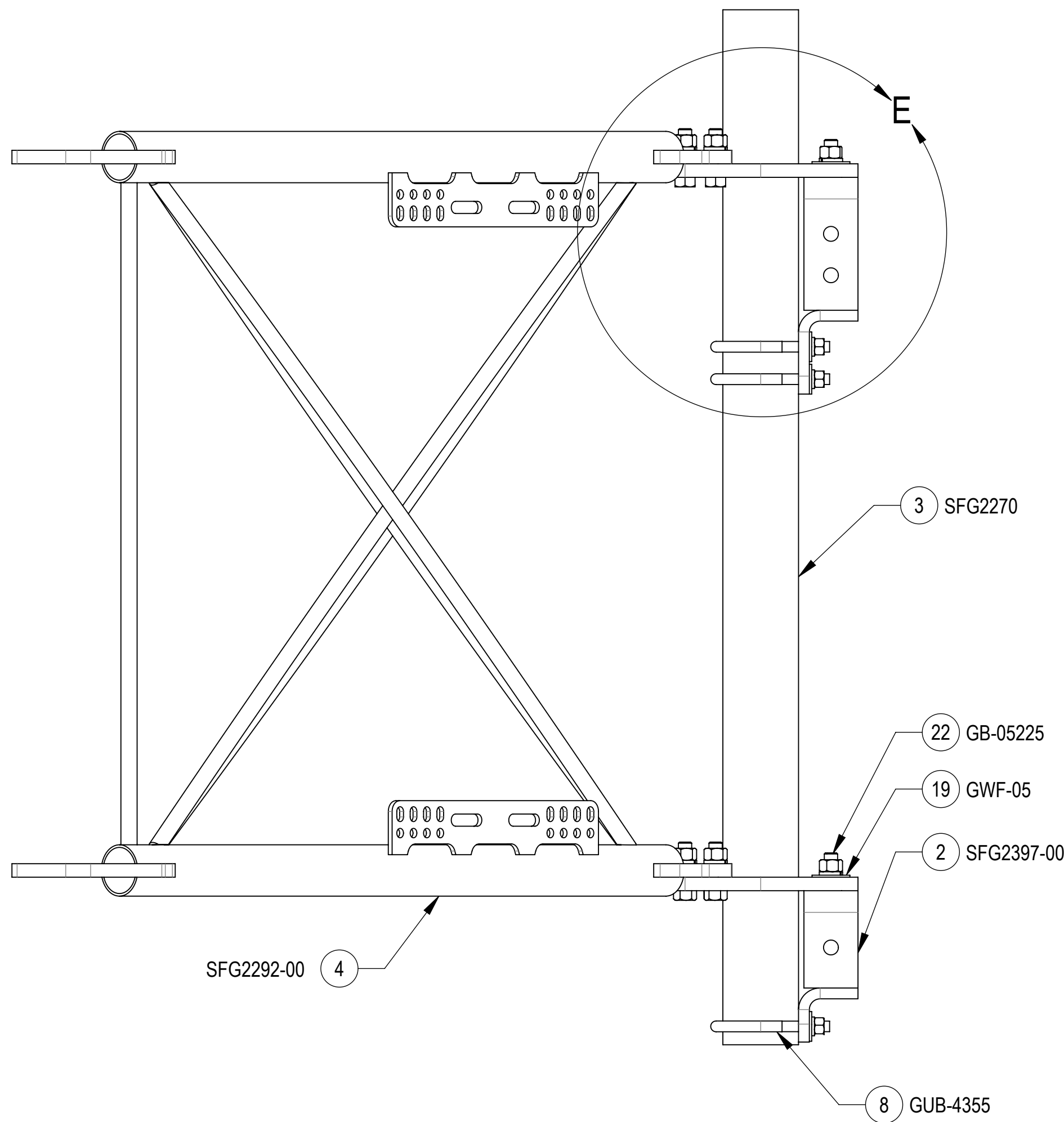
4

3

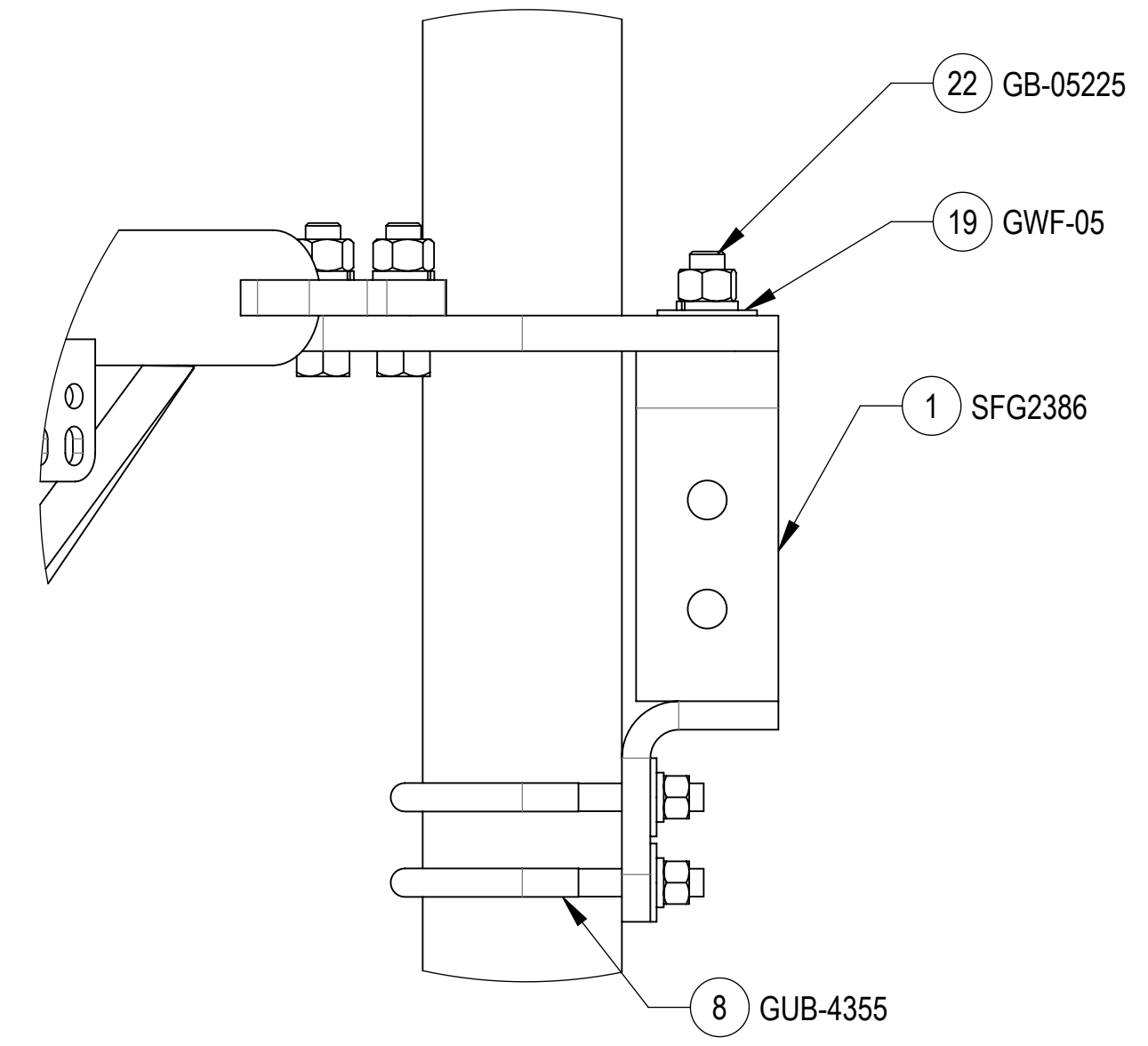
2

1

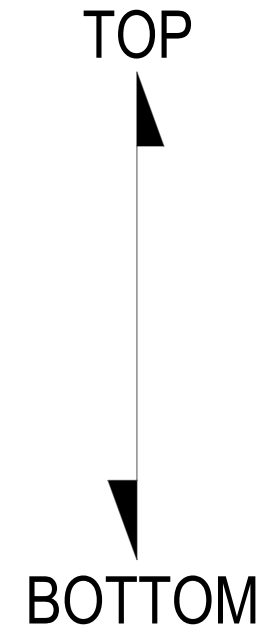
STEP 2: AT TOP, ATTACH AZIMUTH/TAPER BRACKET (SFG2386) TO BACK VERTICAL ARM MOUNT (SFG2270) USING BOLT KITS (GB-05225), U-BOLTS (GUB-4355) AND FLAT WASHERS (GWF-05).
 AT BOTTOM, ATTACH AZIMUTH/TAPER BRACKET (SFG2397-00) TO BACK VERTICAL ARM MOUNT (SFG2270) USING BOLT KITS (GB-05225), U-BOLTS (GUB-4355) AND FLAT WASHERS (GWF-05).


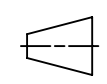


SIDE VIEW



DETAIL E
SCALE 1 : 3



COMMSCOPE, INC. OF NORTH CAROLINA				
TITLE SFG22HD SECTOR FRAME SERIES				
SIZE C	SCALE 1:6	DOCUMENT NO. SFG22HD		
 		DRAWING		SHEET 8 OF 12
		VERSION 11	STATUS RE	

4

3

2

1

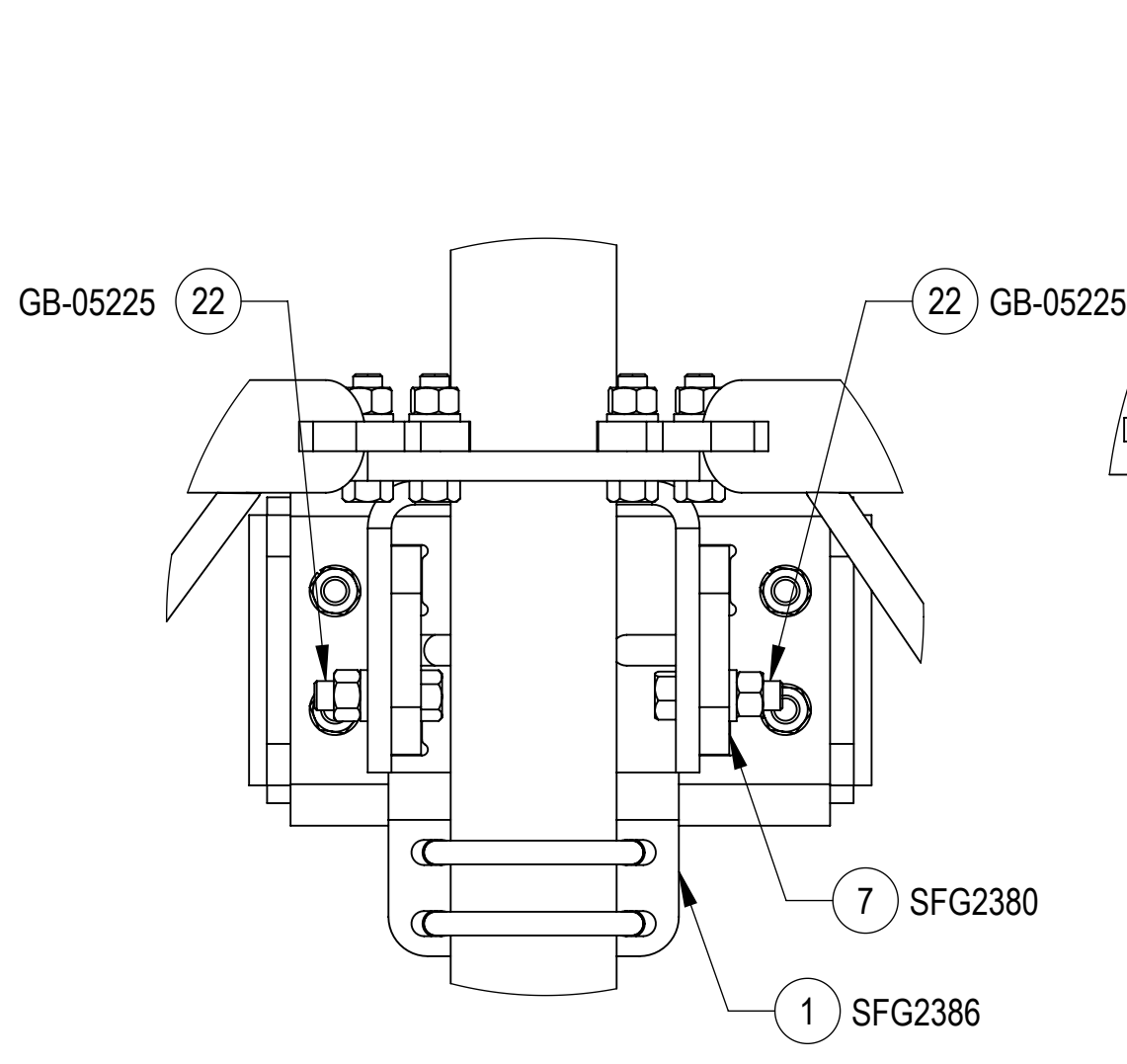
4

3

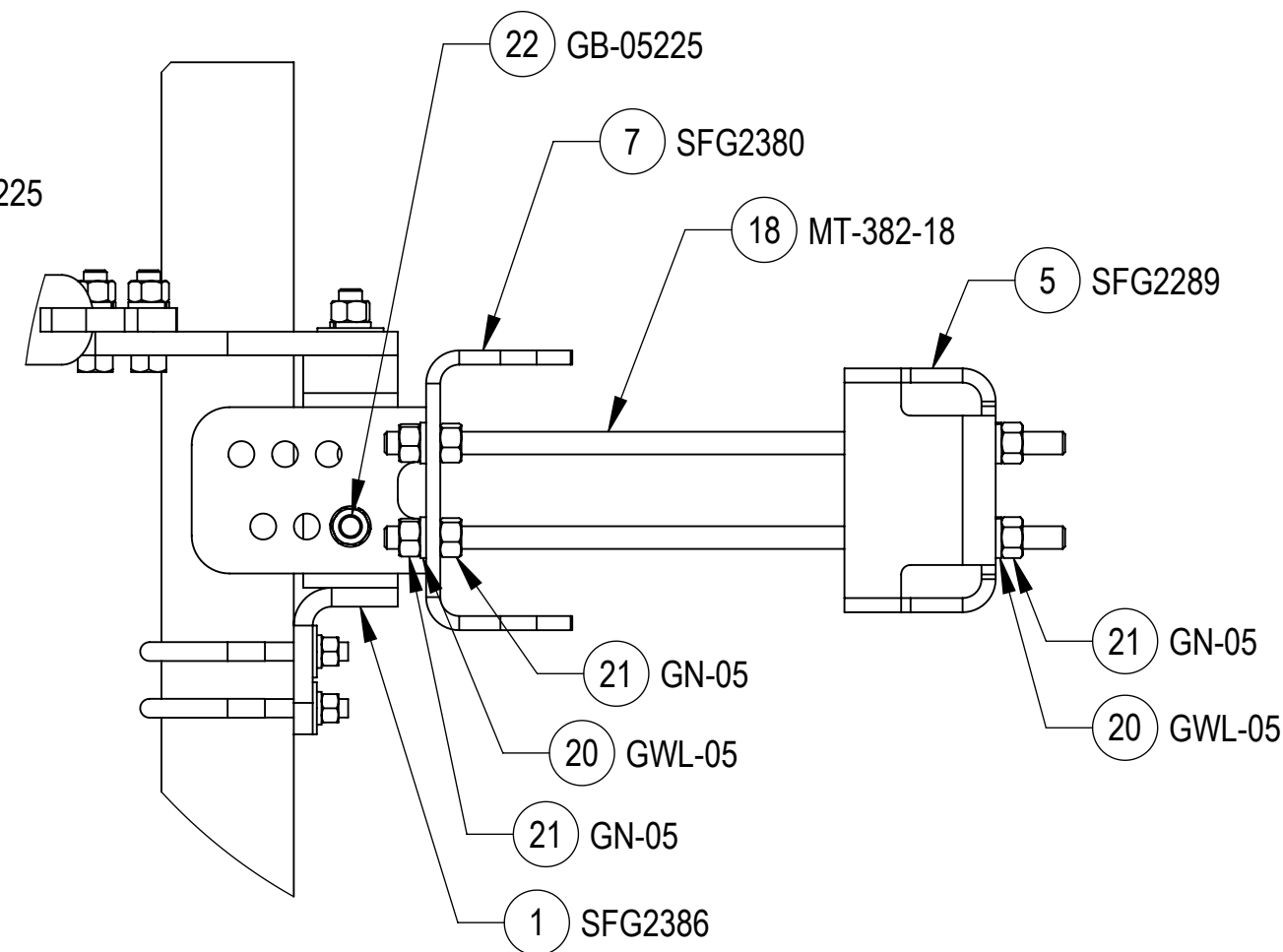
2

1

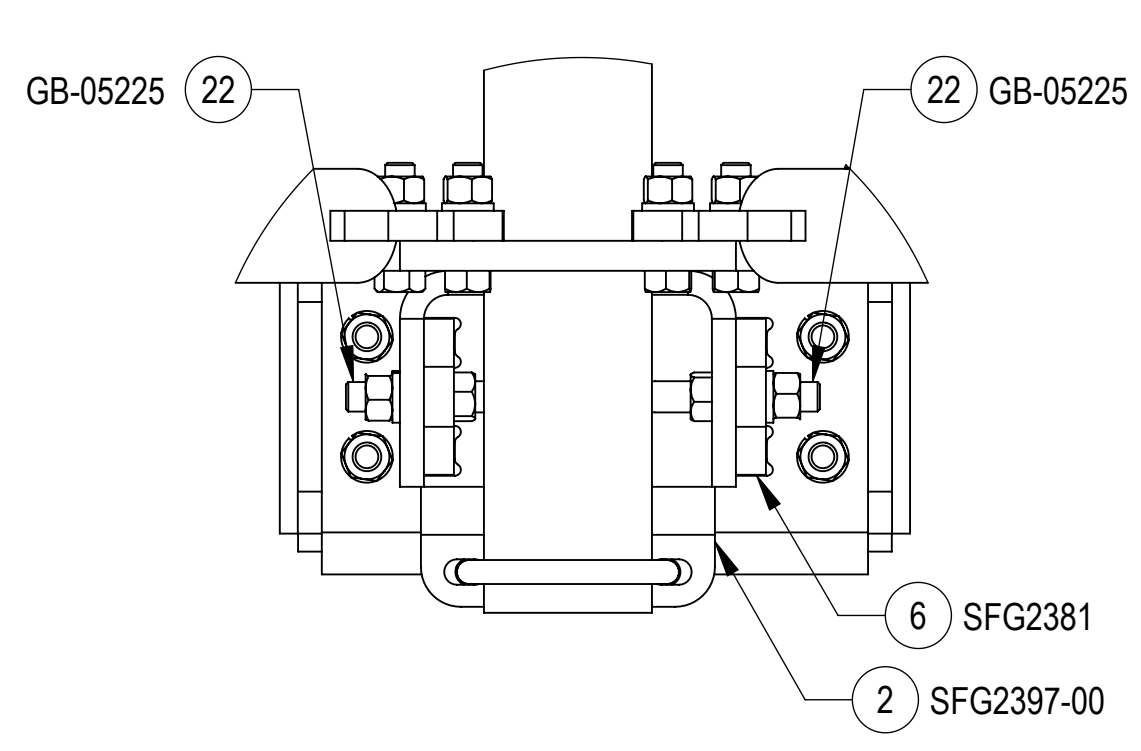
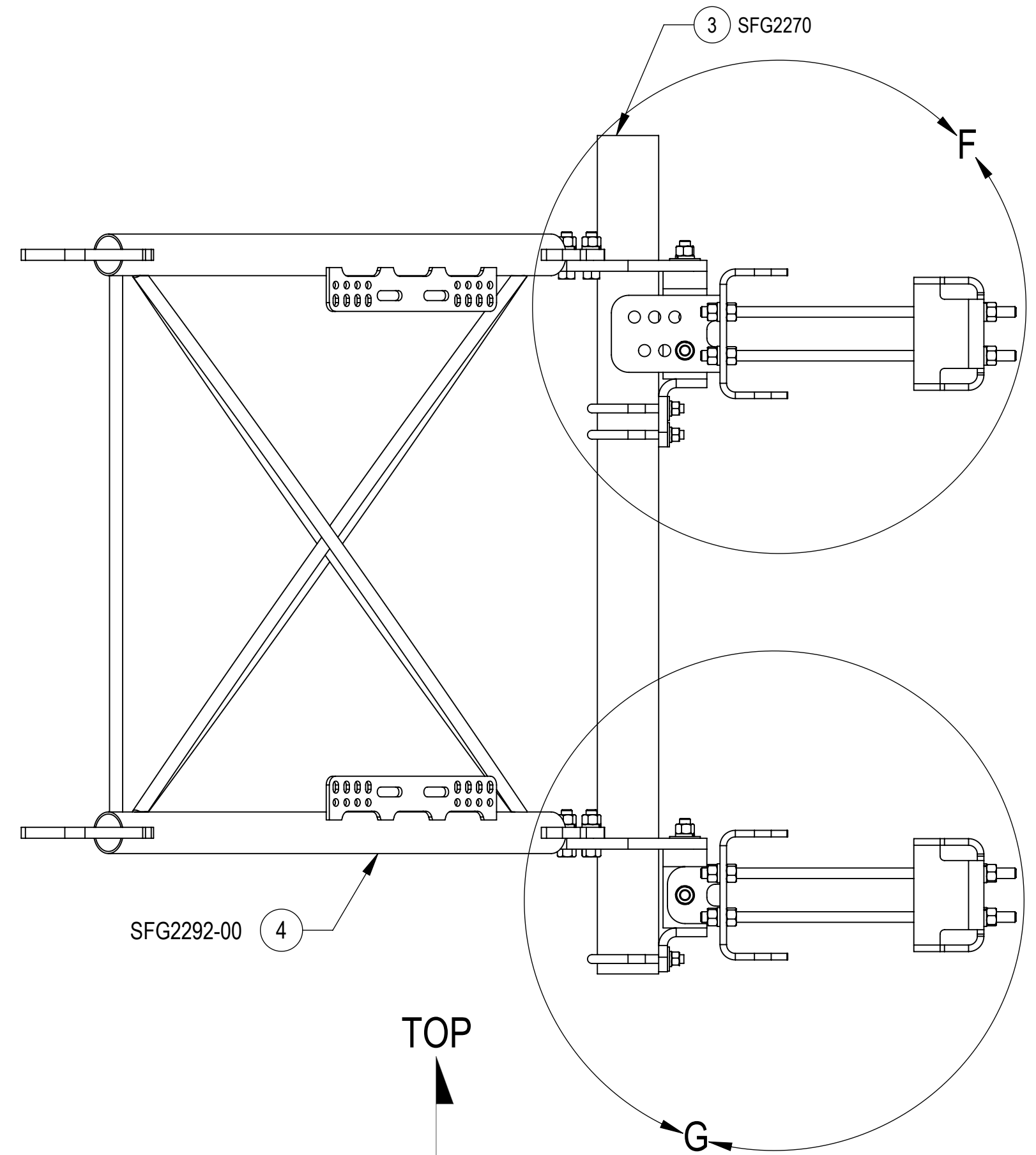
STEP 3: AT TOP, ATTACH TOP TAPER BRACKET (SFG2380) TO AZIMUTH/TAPER BRACKET (SFG2386) USING BOLT KITS (GB-05225);
 AT BOTTOM, ATTACH LOWER TOWER LEG BRACKET (SFG2381) TO AZIMUTH/TAPER BRACKET (SFG2397-00) USING BOLT KITS (GB-05225).



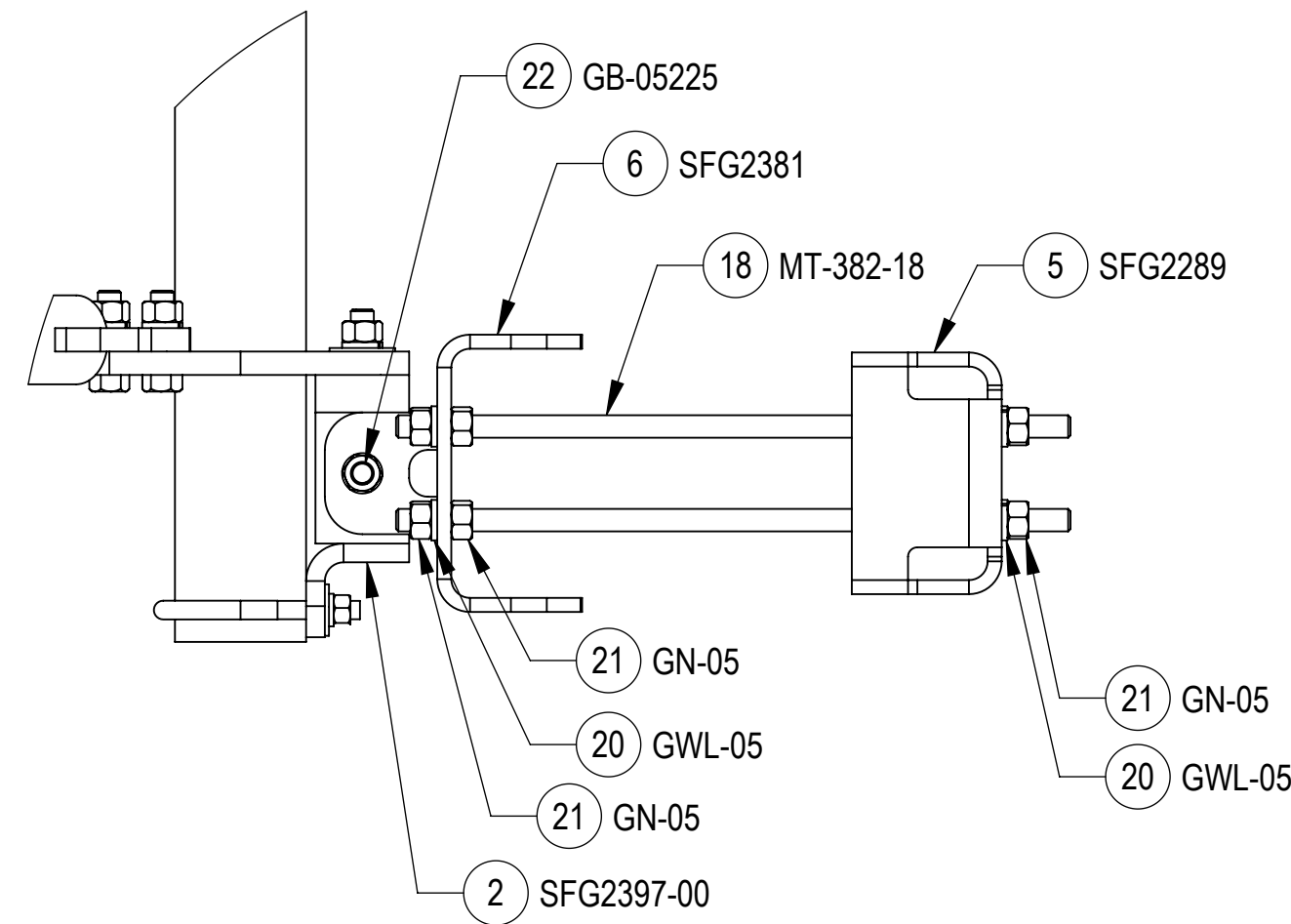
DETAIL FRONT VIEW OF TOP MOUNT
 SCALE 1 : 4



DETAIL F
 SCALE 1 : 5



DETAIL FRONT VIEW OF BOTTOM MOUNT
 SCALE 1 : 4



DETAIL G
 SCALE 1 : 5

TOP
 ↓
 BOTTOM

COMMSCOPE, INC. OF NORTH CAROLINA				
TITLE SFG22HD SECTOR FRAME SERIES				
SIZE C	SCALE 1:6	DOCUMENT NO. SFG22HD		
		DRAWING		SHEET
		VERSION	STATUS	REVISION
		11	RE	F
				9 OF 12

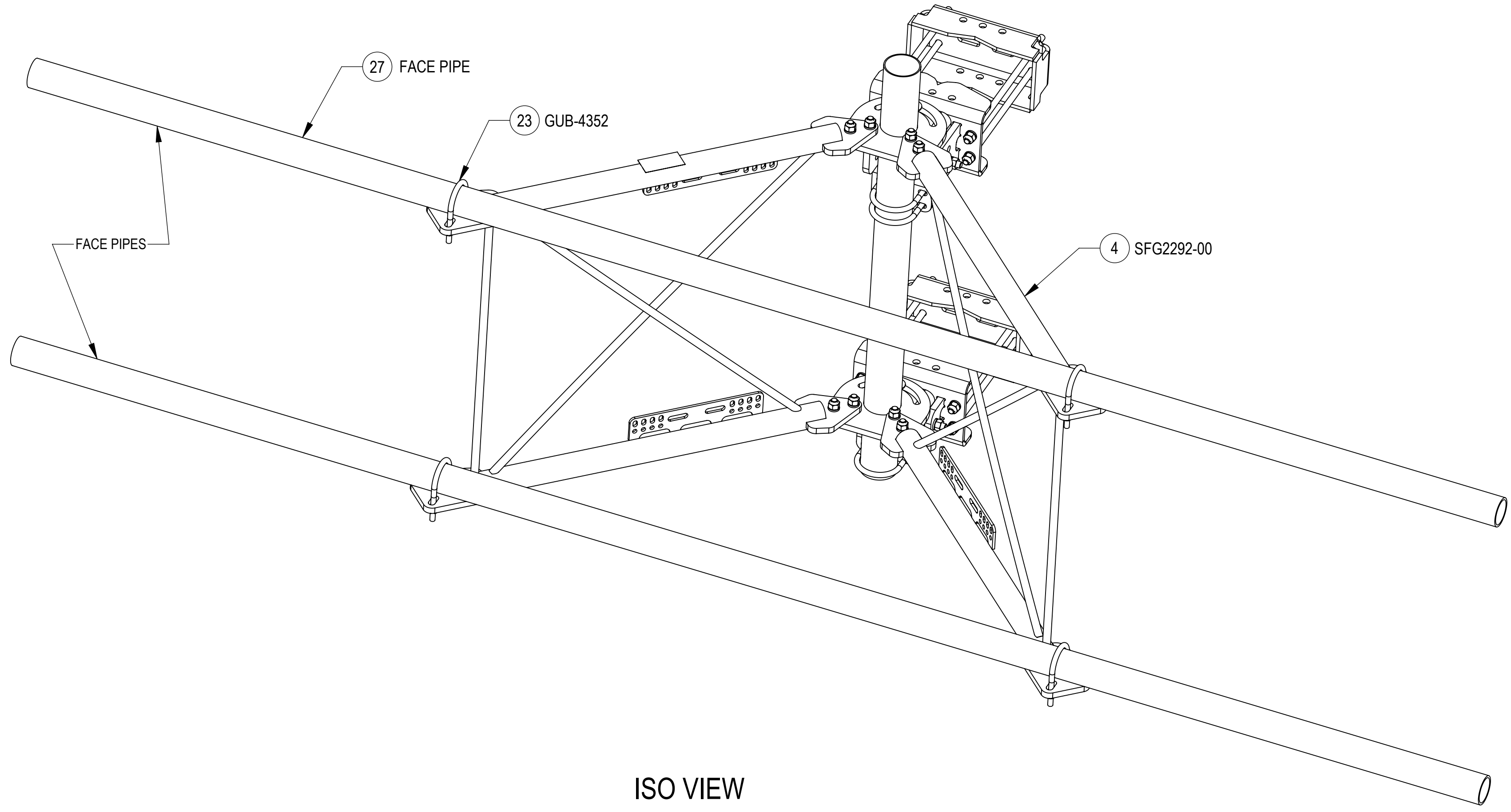
4

3


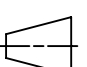
2

1

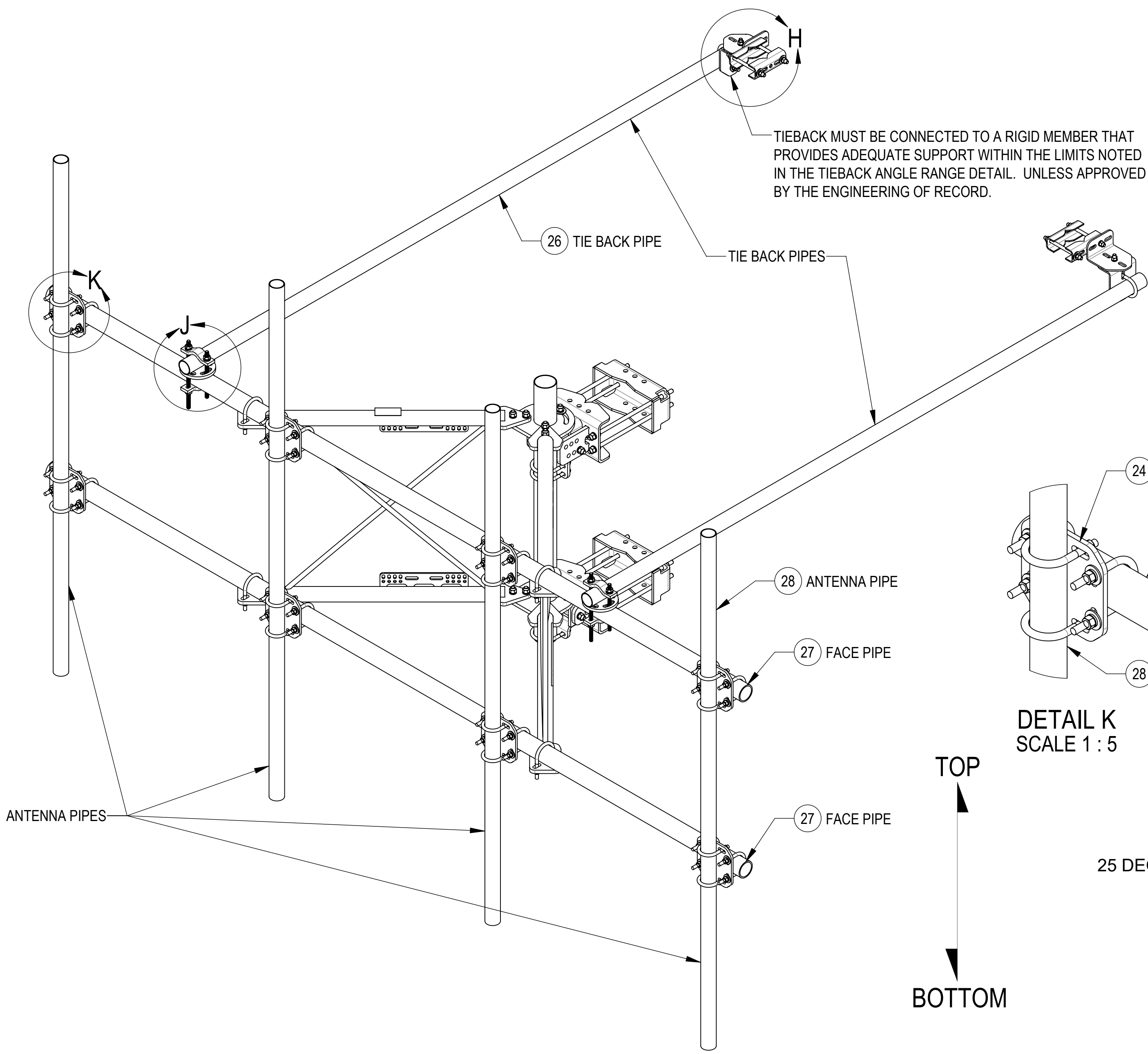
STEP 4: ATTACH FACE PIPES TO V-ARM (SFG2292-00) USING U-BOLTS (GUB-4352).



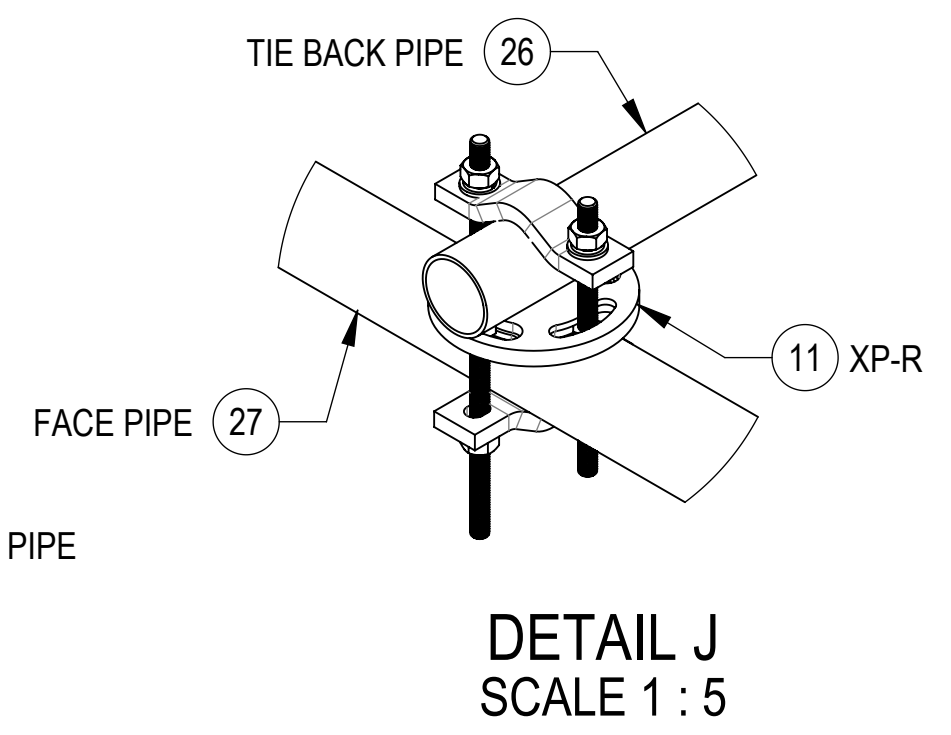
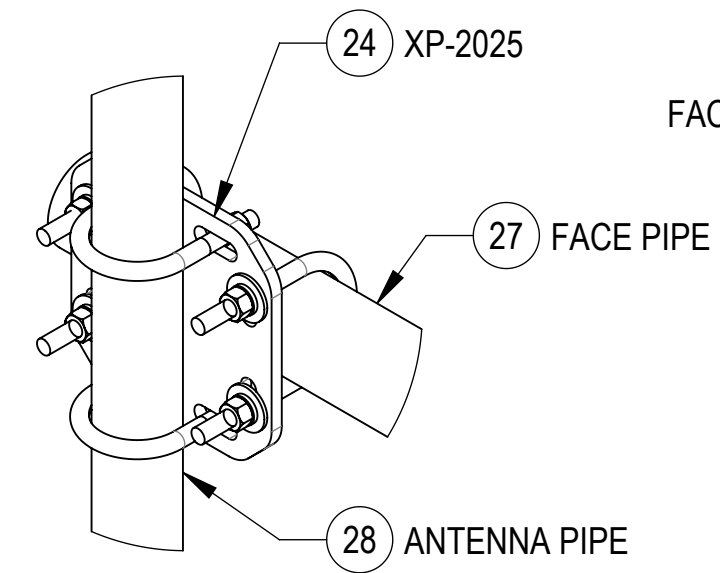
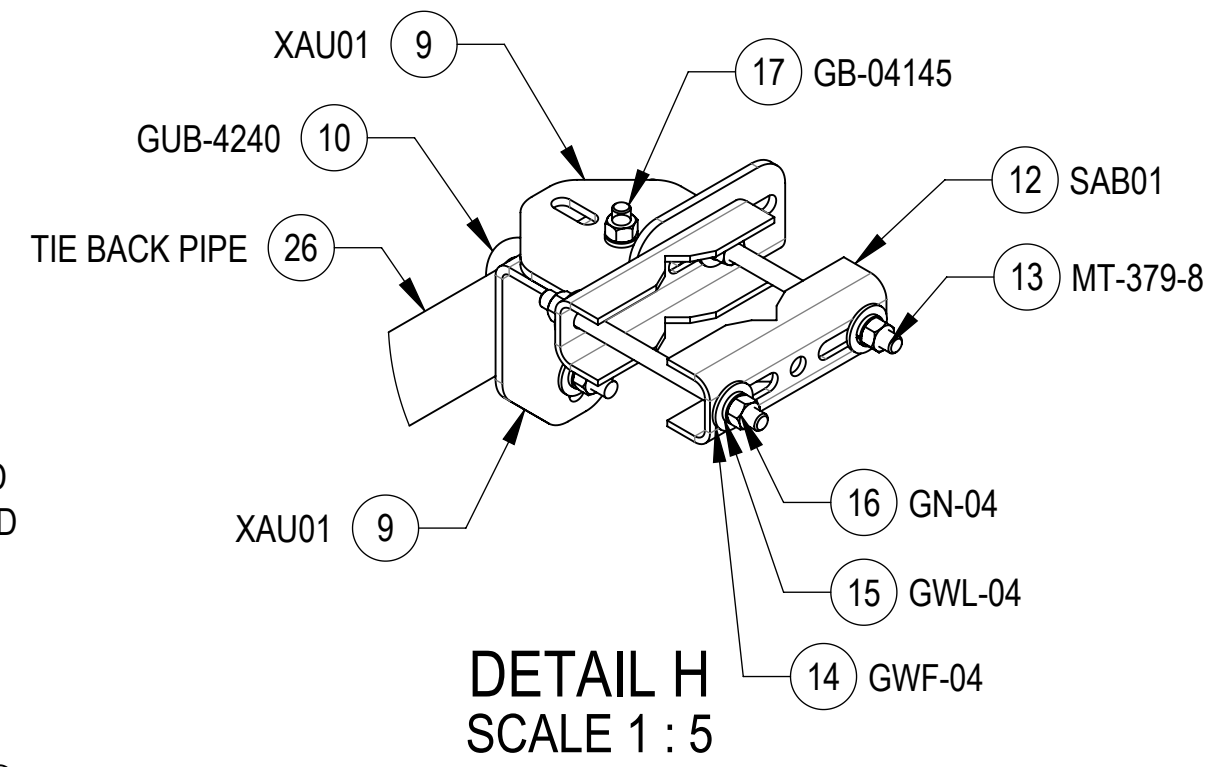
ISO VIEW

COMMSCOPE, INC. OF NORTH CAROLINA					
TITLE SFG22HD SECTOR FRAME SERIES					
SIZE C	SCALE 1:8	DOCUMENT NO. SFG22HD			
 		DRAWING			SHEET 10 OF 12
		VERSION 11	STATUS RE	REVISION F	

STEP 5: ATTACH ANTENNA PIPES TO FACE PIPES USING CROSSOVER PLATE KITS (XP-2025).
 ATTACH TIE BACK PIPES TO FACE PIPES USING ROUND CROSSOVER PLATE KITS (XP-R).

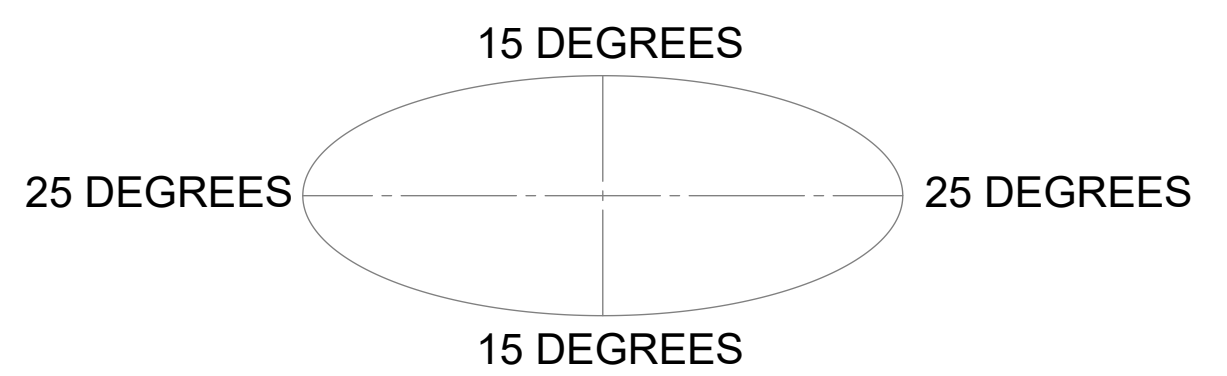


TIEBACK MUST BE CONNECTED TO A RIGID MEMBER THAT PROVIDES ADEQUATE SUPPORT WITHIN THE LIMITS NOTED IN THE TIEBACK ANGLE RANGE DETAIL. UNLESS APPROVED BY THE ENGINEERING OF RECORD.



ALLOWABLE TIEBACK ANGLE

±15 DEGREES VERTICAL
 ±25 DEGREES HORIZONTAL



TOP
 BOTTOM

ISO VIEW

COMMSCOPE, INC. OF NORTH CAROLINA				
TITLE SFG22HD SECTOR FRAME SERIES				
SIZE C	SCALE 1:12	DOCUMENT NO. SFG22HD		
		DRAWING		SHEET
		VERSION 11	STATUS RE	REVISION F
				11 OF 12

4

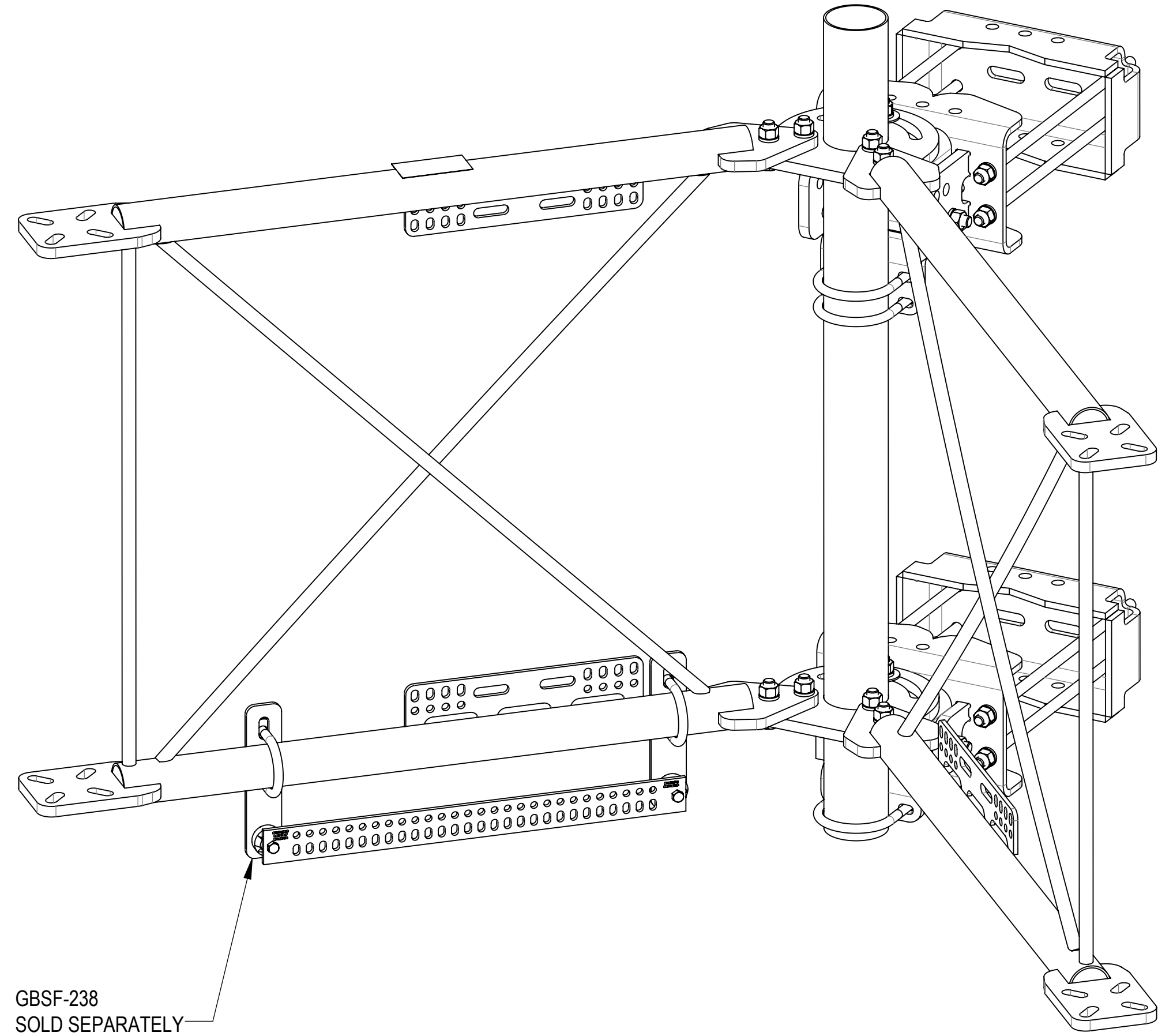
3

2

1

OPTIONAL ACCESSORIES:

BUSS BAR MOUNT KIT GBSF-238 IS WELL SUITED TO BE USED SHOULD THE NEED ARISE
NOTE THAT THIS KIT DOES NOT INCLUDE THE ISOLATORS OR BUSS BAR



GBSF-238
SOLD SEPARATELY

ISO VIEW

COMMSCOPE, INC. OF NORTH CAROLINA				
TITLE SFG22HD SECTOR FRAME SERIES				
SIZE C	SCALE 1:12	DOCUMENT NO. SFG22HD		
		DRAWING		SHEET 12 OF 12
		VERSION 11	STATUS RE	

4

3

2

1

D

D

C

C

B

B

A

A