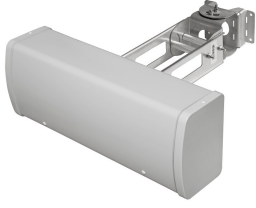


# CMAX-HM4-60-153



Cell-Max™ Low PIM Directional High Capacity Venue Over the Head (4x4 MIMO) Antenna, 1695–2700, 3300–4200 MHz

## Product Classification

<b>Product Type</b>	Over-the-head stadium antenna
<b>Product Brand</b>	Cell-Max™

## General Specifications

<b>Application</b>	Indoor/Outdoor
<b>Antenna Type</b>	Directional
<b>Antenna Array Characteristic</b>	MIMO 4x4
<b>Polarization</b>	±45°
<b>Color</b>	Light Gray (RAL 7035)
<b>Number of Ports</b>	4
<b>Radome Material</b>	PVC
<b>RF Connector Interface</b>	4.3-10 Female

## Dimensions

<b>Width</b>	164 mm   6.457 in
<b>Depth</b>	115 mm   4.528 in
<b>Length</b>	426 mm   16.772 in

## Electrical Specifications

<b>Impedance</b>	50 ohm
<b>Lightning Protection</b>	dc Ground
<b>Operating Frequency Band</b>	1695 – 2700 MHz   3300 – 4200 MHz
<b>Electrical Note</b>	Values typical, unless otherwise stated

## Electrical Specifications

Frequency Band, MHz	1695–2200	2200–2700	3300–4200
<b>Gain, dBi</b>	8.9	8.9	8.7

# CMAX-HM4-60-153

---

<b>Beamwidth, Horizontal, degrees</b>	63	64	60
<b>Beamwidth, Vertical, degrees</b>	64	64	60
<b>Front-to-Back Ratio, Copolarization 180° ± 30°, dB</b>	22	22	20
<b>Isolation, Cross Polarization, dB</b>	22	22	22
<b>VSWR   Return loss, dB</b>	1.5   14.0	1.5   14.0	1.5   14.0
<b>PIM, 3rd Order, 2 x 20 W, dBc</b>	-153	-153	-153
<b>Input Power per Port, maximum, watts</b>	100	100	100

## Environmental Specifications

<b>Operating Temperature</b>	-40 °C to +60 °C (-40 °F to +140 °F)
<b>Relative Humidity</b>	Up to 100%
<b>Vibration Test Method</b>	ASTM D4169   IEC 60068-2-6

## Packaging and Weights

<b>Width, packed</b>	350 mm   13.78 in
<b>Depth, packed</b>	190 mm   7.48 in
<b>Length, packed</b>	470 mm   18.504 in
<b>Included</b>	Mounting bracket
<b>Net Weight, with mounting kit</b>	4.5 kg   9.921 lb
<b>Packaging quantity</b>	1
<b>Weight, gross</b>	5.5 kg   12.125 lb
<b>Weight, net</b>	2.6 kg   5.732 lb

## Regulatory Compliance/Certifications

<b>Agency</b>	<b>Classification</b>
CHINA-ROHS	Below maximum concentration value
REACH-SVHC	Compliant as per SVHC revision on <a href="http://www.andrew.com/ProductCompliance">www.andrew.com/ProductCompliance</a>
ROHS	Compliant
UK-ROHS	Compliant

