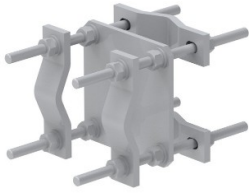


CO-200



Crossover Plate, joins 1.5 in to 5 in OD round members (Pipe not included)

Product Classification

Product Type	Clamp plate
Ordering Note	ANDREW® standard product (Global)
Warranty	One year

General Specifications

Mounting	Crossover plate
Tower Taper	Non-tapered

Dimensions

Height	254 mm 10 in
Width	304.8 mm 12 in
Length	203.2 mm 8 in
Mounting Diameter 2, maximum	127 mm 5 in
Mounting Diameter 2, minimum	50.8 mm 2 in
Mounting Diameter, maximum	127 mm 5 in
Mounting Diameter, minimum	38.1 mm 1.5 in

Material Specifications

Material Type	Hot dip galvanized steel
----------------------	--------------------------

Packaging and Weights

Included	Clamps Plates
Packaging quantity	1
Weight, net	9.8 kg 21.605 lb

Regulatory Compliance/Certifications

Agency	Classification
--------	----------------

CO-200

ISO 9001:2015

Designed, manufactured and/or distributed under this quality management system

* Footnotes

Warranty

For more information, please consult our Product Warranty guidelines

