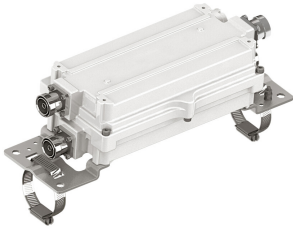


E15V87P63

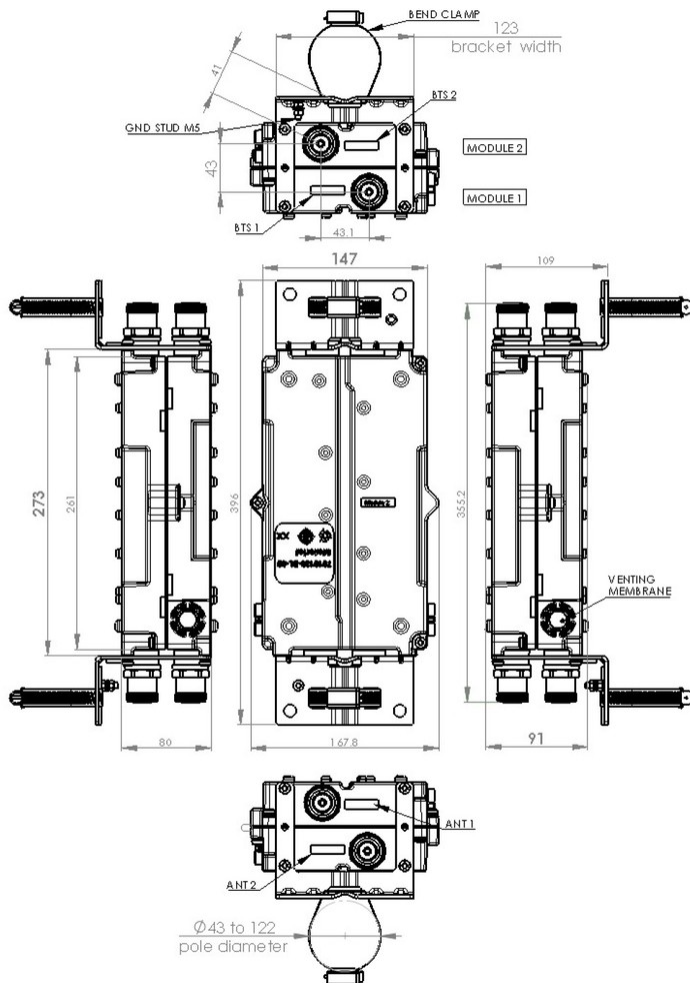


Interference Mitigation Filter for 2600 band with rejection 46dB in 2575-2615 MHz band, DC Pass

Product Classification

Product Type Interference mitigation filter

Outline Drawing



Electrical Specifications

E15V87P63

Sub-module	1 2
Branch	1
License Band	IMT 2600, Band Pass

Electrical Specifications, Band Pass

Frequency Range, MHz	2500–2570 2620–2690
Insertion Loss, maximum, dB	1.9
Insertion Loss, typical, dB	0.3
Total Group Delay, maximum, ns	130
Total Group Delay, typical, ns	10
Return Loss, minimum, dB	18
Return Loss, typical, dB	20
Input Power, RMS, maximum, W	100
Input Power, PEP, maximum, W	1000
3rd Order PIM, maximum, dBc	-150
3rd Order PIM Test Method	Two +43 dBm carriers

Electrical Specifications, Band Reject

Frequency Range, MHz	2575–2615
Attenuation, minimum, dB	46

Block Diagram

E15V87P63

