

1.0 GENERAL NOTES

- 1.1 ALL METRIC DIMENSIONS ARE IN BRACKETS [X. X]
- 1.2 FOR PATENT INFO: <https://www.adwpat.com>

2.0 DESIGN NOTES

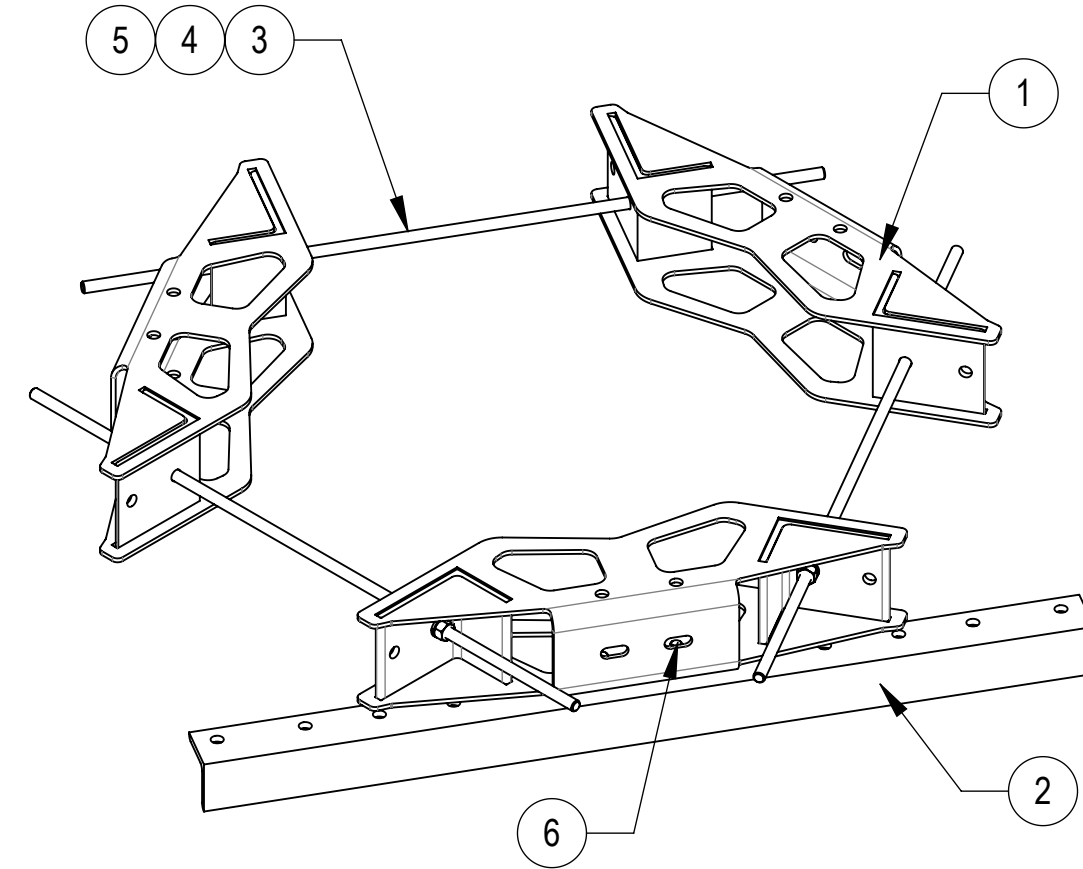
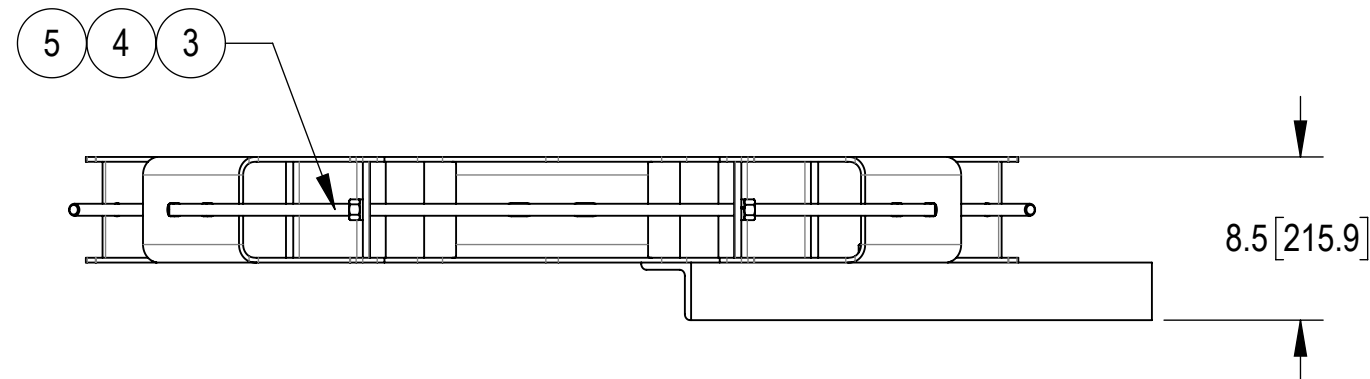
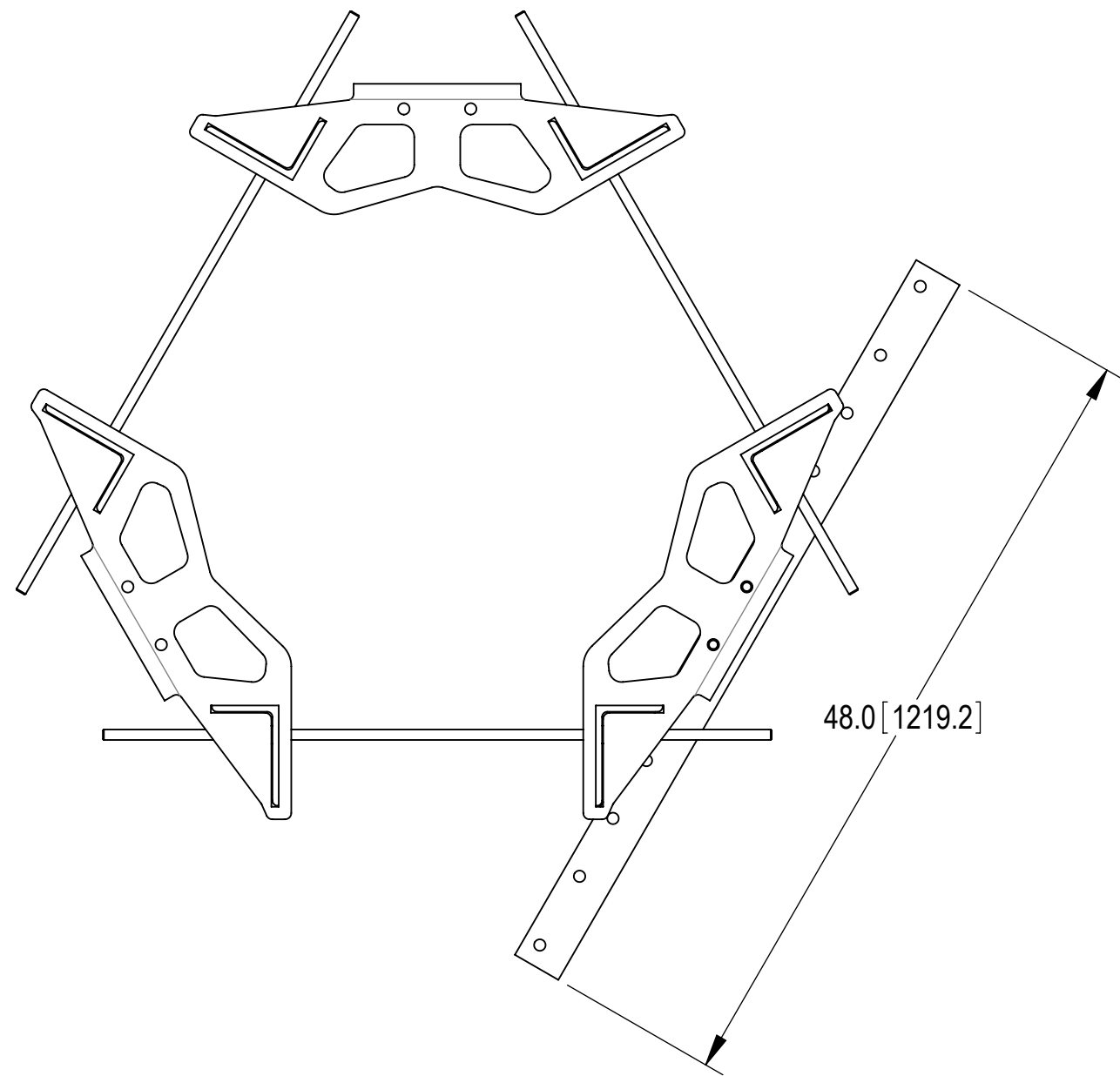
- 2.1 ANY HAZARDS OR OBSTRUCTIONS TO THE CLIMBING FACILITY AND SAFETY CLIMB MUST BE IDENTIFIED PRIOR TO INSTALLING THE APPURTENANCE. ADDITIONAL PRODUCTS MAY BE REQUIRED TO MAINTAIN THE INTEGRITY OF THE SAFETY CLIMB. DURING INSTALLATION, TEMPORARY AND/OR PERMANENT PRECAUTIONARY MEASURES SHOULD BE TAKEN TO PRESERVE THE CLIMBING FACILITY AND/OR SAFETY CLIMB.
- 2.2 FITS MONOPOLES 15"-50".
- 3.0 MANUFACTURING/SPECIAL REQUIREMENTS
 - 3.1 TIGHTEN ALL BOLTS 3/8" OR LARGER SECURING FLAT PLATES SNUG TIGHT. TIGHTEN ALL THREADED RODS SNUG TIGHT, WITH ATTENTION TO LEAVE EQUAL DISTANCE AND EQUAL FORCE ON EACH LEG OF THREADED ROD.
 - 3.2 SNUG TIGHT IS DEFINED AS THE CONDITION OBTAINED WITH A FEW IMPACTS OF AN IMPACT WRENCH OR THE FULL EFFORT OF AN INSTALLER USING AN ORDINARY SPUD WRENCH TO BRING THE CONNECTED LAYERS (PLIES) OF STEEL INTO FULL CONTACT.
 - 3.3 FOR BOLTS IN A PATTERN, TIGHTEN IN A CRISS-CROSS OR STAR SEQUENCE, INCREASING TORQUE IN GRADUAL STEPS UNTIL SNUG TIGHT.
 - 3.4 FIELD CUT ALL-THREAD AS NEEDED.

4.0 TEST

5.0 PACKAGING

- 5.1 PACKAGING SHALL MEET ANDREW REQUIREMENTS PER DOCUMENT IS-PL-3005
- 5.2 PRINTED DOCUMENT TO BE PLACED INSIDE POLYBAG AND THEN IN SHIPPING CONTAINER
- 5.3 EXTRA HARDWARE MAY BE SUPPLIED, BAGGED AND SHIPPED

REVISIONS			
REV.	DESCRIPTION	DATE	APPROVED
A	INITIAL RELEASE	MSM 22OCT12	TP
B	UPDATED DRAWING FORMAT	NSUN 08JAN26	BA1025 50106501AMO




COMPONENT PART NUMBERS PROVIDED FOR ASSEMBLY PURPOSES;
INDIVIDUAL COMPONENTS MAY BE SHIPPED AS PARTS WITHIN AN INCLUDED KIT.


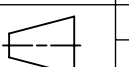
ITEM	PART NO.	DESCRIPTION	QTY.	WEIGHT	NOTE NO.
1	RMSSM03	15-50" BACK TIE RING MOUNT WELDMENT	3	28.96 LBS	
2	RMSS01	RM-SS TIEBACK ANGLE	1	27.78 LBS	
3	MT38240	5/8" X 40" GALV THREADED ROD	3	3.46 LBS	
4	GWL-05	5/8" GALV LOCK WASHER	6	0.03 LBS	
5	GN-05	5/8" GALV HEX NUT	6	0.08 LBS	
6	GB-0520A	5/8" X 2" GALV BOLT KIT (A325)	2	0.26 LBS	

DENSITY		lbs/in ³
MASS	137.45	lbs
VOLUME	5121.61	in ³
SURFACE AREA	22202.83	in ²
HEIGHT	8.5"	
LENGTH	57.9"	
WIDTH	56.4"	

Confidential



ANDREW® an Amphenol company

TOLERANCES		SAP MATERIAL MASTER	
1 PLACE .X[X] ± 0.12[3.0]	3 PLACE .XXX[X] ± 0.030[0.8]	RM-SS-M	
2 PLACE .XX[X] ± 0.06[1.5]	ANGLES ± 2°		
FINISH		MATERIAL	
UNLESS OTHERWISE SPECIFIED DIMENSIONS ARE IN INCHES INTERPRET PER ANSI Y 14.5M-1994		TITLE	
CE MSM	DATE 22OCT12	15-50" MONOPOLE TIE BACK RING MOUNT	
RW NSUN	01/08/2026		
AD YMENG	01/15/2026		
RE YMENG	01/15/2026		
ECN 50106501AMO		SCALE	DOCUMENT NO.
		1:10	RM-SS-M
SIZE	Auth Group INSL	MODEL	
C	 	VERSION	STATUS
		01	RE
		DRAWING	
VERSION	STATUS	REVISION	REVISION
01	RE	B	01
		SHEET	
		1 OF 1	