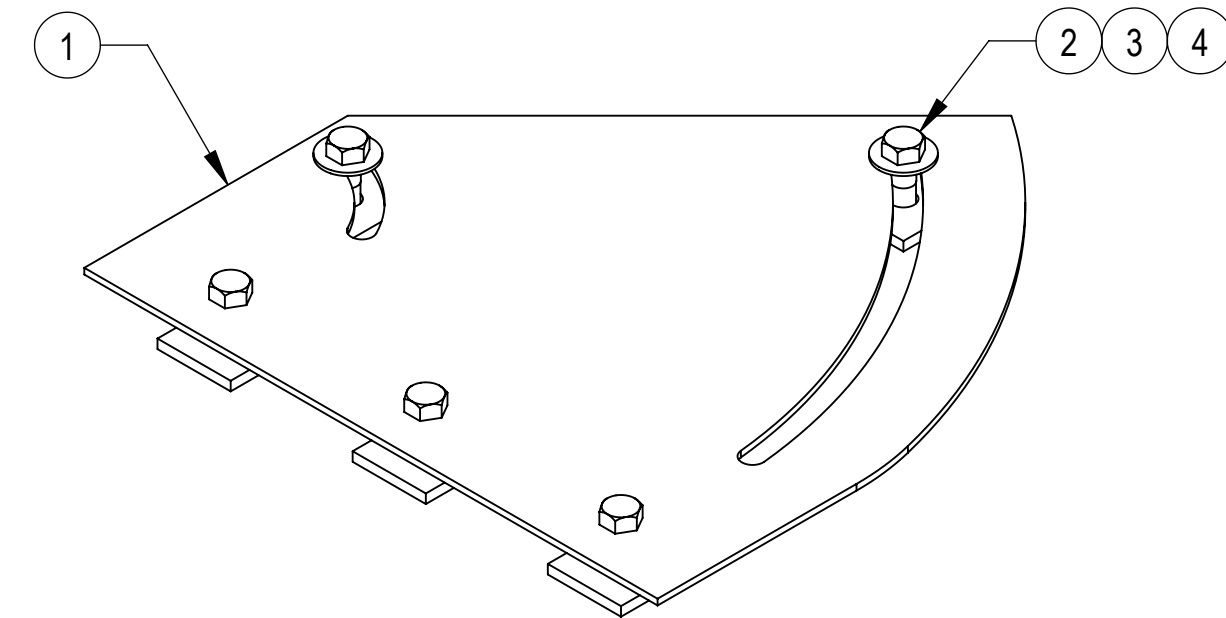
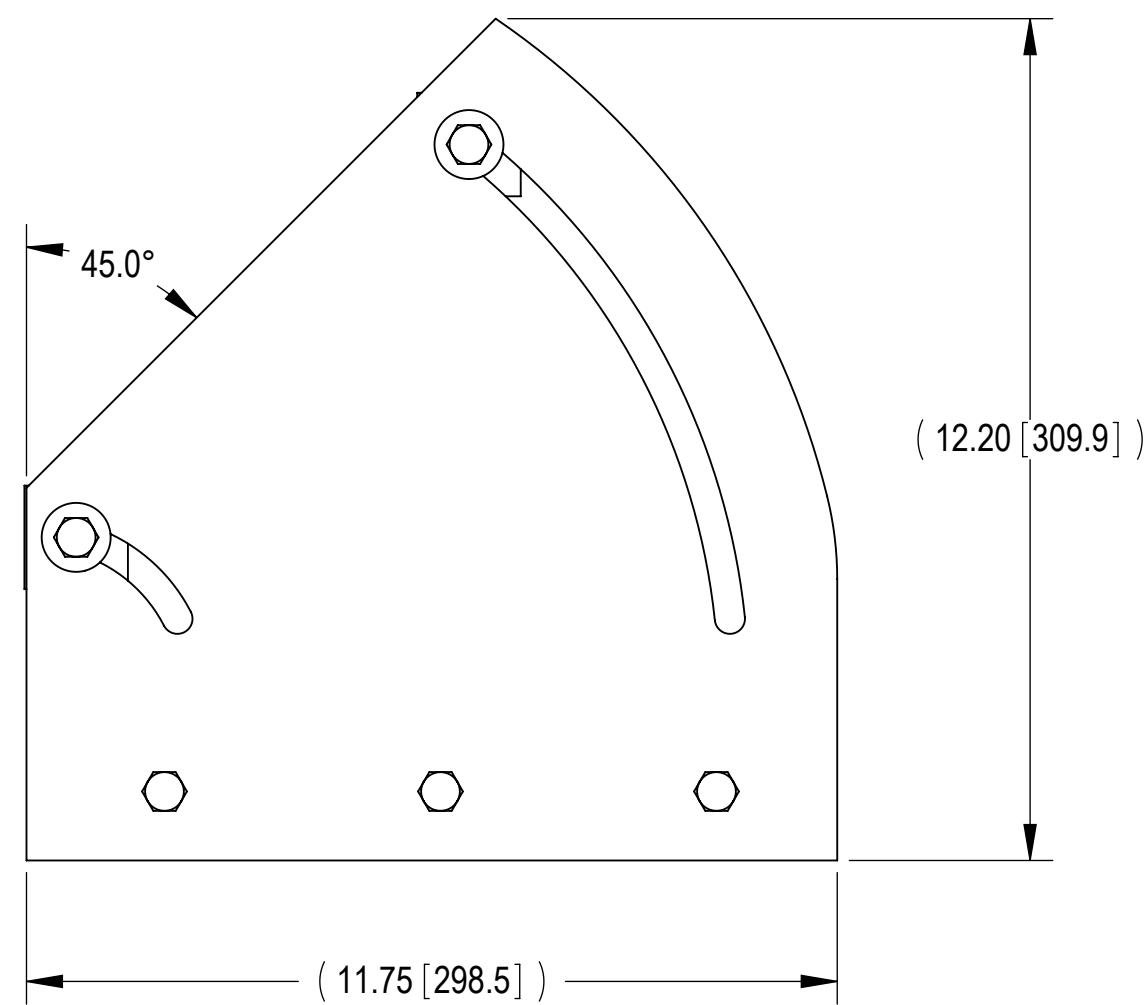


- 1.0 GENERAL NOTES
 1.1 ALL METRIC DIMENSIONS ARE IN BRACKETS [X. X]
 1.2 FOR PATENT INFO: <https://www.adwpat.com>
 2.0 DESIGN NOTES
 3.0 MANUFACTURING/SPECIAL REQUIREMENTS
 3.1 TIGHTEN ALL BOLTS 3/8" OR LARGER SECURING FLAT PLATES SNUG TIGHT.
 3.2 SNUG TIGHT IS DEFINED AS THE CONDITION OBTAINED WITH A FEW IMPACTS OF AN IMPACT WRENCH OR THE FULL EFFORT OF AN INSTALLER USING AN ORDINARY SPUD WRENCH TO BRING THE CONNECTED LAYERS (PLIES) OF STEEL INTO FULL CONTACT.
 3.3 FOR BOLTS IN A PATTERN, TIGHTEN IN A CRISS-CROSS OR STAR SEQUENCE, INCREASING TORQUE IN GRADUAL STEPS UNTIL SNUG TIGHT.
 4.0 TEST
 5.0 PACKAGING
 5.1 PACKAGING SHALL MEET ANDREW REQUIREMENTS PER DOCUMENT IS-PL-3005
 5.2 PRINTED DOCUMENT TO BE PLACED INSIDE POLYBAG AND THEN IN SHIPPING CONTAINER
 5.3 EXTRA HARDWARE MAY BE SUPPLIED, BAGGED AND SHIPPED

REVISIONS			
REV.	DESCRIPTION	DATE	APPROVED
A	INITIAL RELEASE	DMW 07MAY01	TP
B	UPDATED DRAWING FORMAT	NSUN 05JAN26	BA1025 50106431AMO



COMPONENT PART NUMBERS PROVIDED FOR ASSEMBLY PURPOSES;
 INDIVIDUAL COMPONENTS MAY BE SHIPPED AS PARTS WITHIN AN INCLUDED KIT.

ITEM	PART NO.	DESCRIPTION	QTY.	WEIGHT	NOTE NO.
1	MTF50401	ADJUSTABLE SPLICE	1	3.43 LBS	
2	GB-03145	3/8" X 1-1/2" GALV BOLT KIT	5	0.07 LBS	
3	MT-387	SQUARE WASHER 1-1/2"X1-1/2" W/ 7/16 HOLE	5	0.11 LBS	
4	GWF-03	3/8" GALV FLAT WASHER	2	0.01 LBS	

DENSITY	4.46	lbs/in ³
MASS	4.46	lbs
VOLUME	15.83	in ³
SURFACE AREA	267.22	in ²
HEIGHT	1.7"	
LENGTH	12.2"	
WIDTH	11.8"	

ANDREW® an Amphenol company

TOLERANCES: 1 PLACE .X[X] ± 0.06[1.5], 2 PLACE .XX[X] ± 0.03[0.8], 3 PLACE .XXX[X] ± 0.010[0.3], ANGLES ± 2°

SAP MATERIAL MASTER: **MT-F504**

FINISH: MATERIAL:

NAME	DATE	TITLE
CE DMW	07MAY01	ADJUSTABLE SPLICE FOR WG BRIDGE
RW NSUN	01/06/2026	
AD YMENG	01/08/2026	
RE YMENG	01/08/2026	

SCALE: **1:1** DOCUMENT NO.: **MT-F504**

SIZE	Auth Group	INSL	MODEL	DRAWING			SHEET
VERSION	STATUS	REVISION	VERSION	STATUS	REVISION	1 OF 1	
01	RE	B	01	RE	B		

UNLESS OTHERWISE SPECIFIED DIMENSIONS ARE IN INCHES INTERPRET PER ANSI Y 14.5M-1994

Confidential