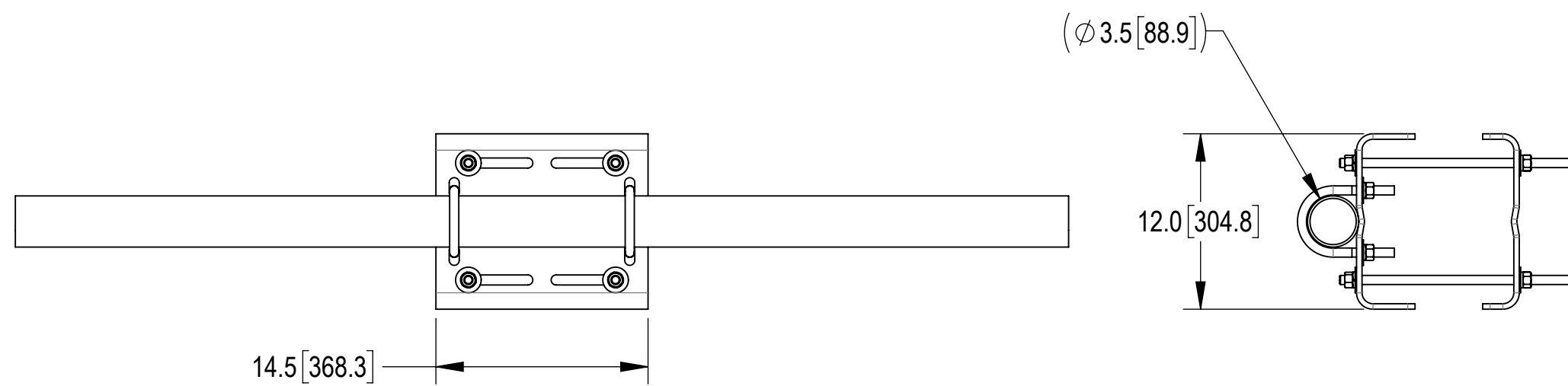
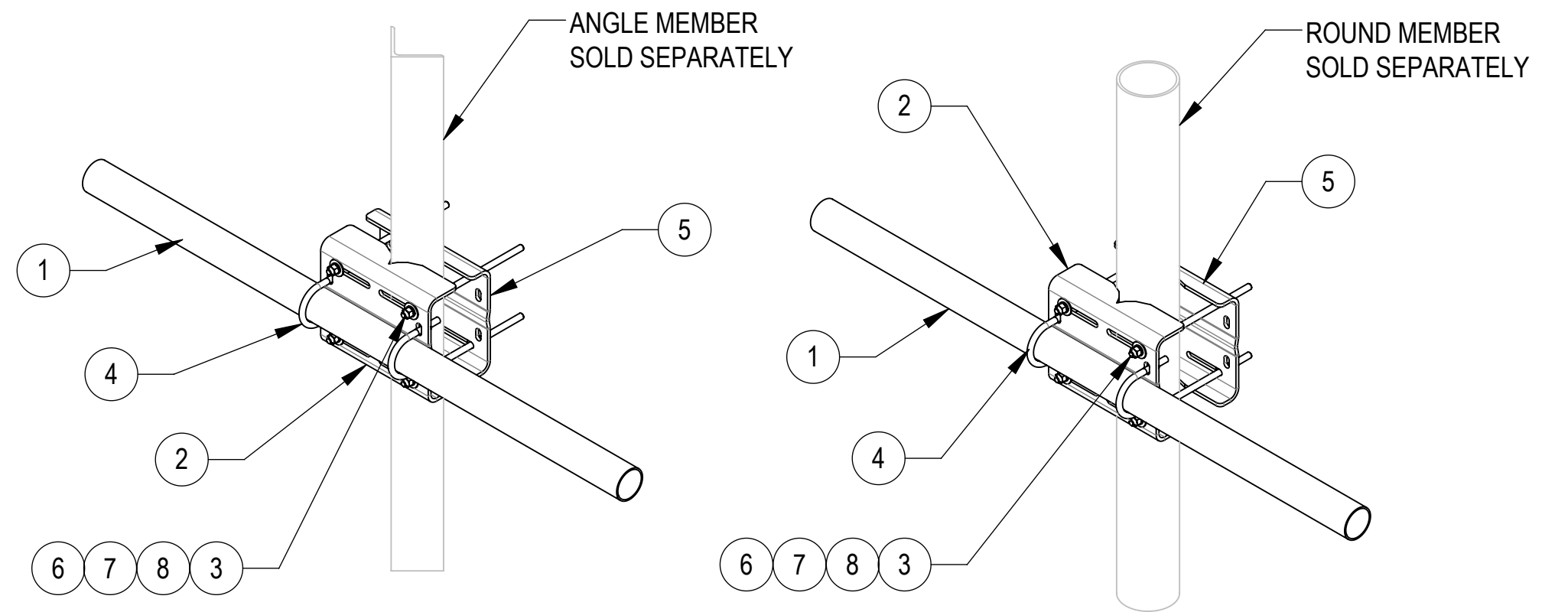
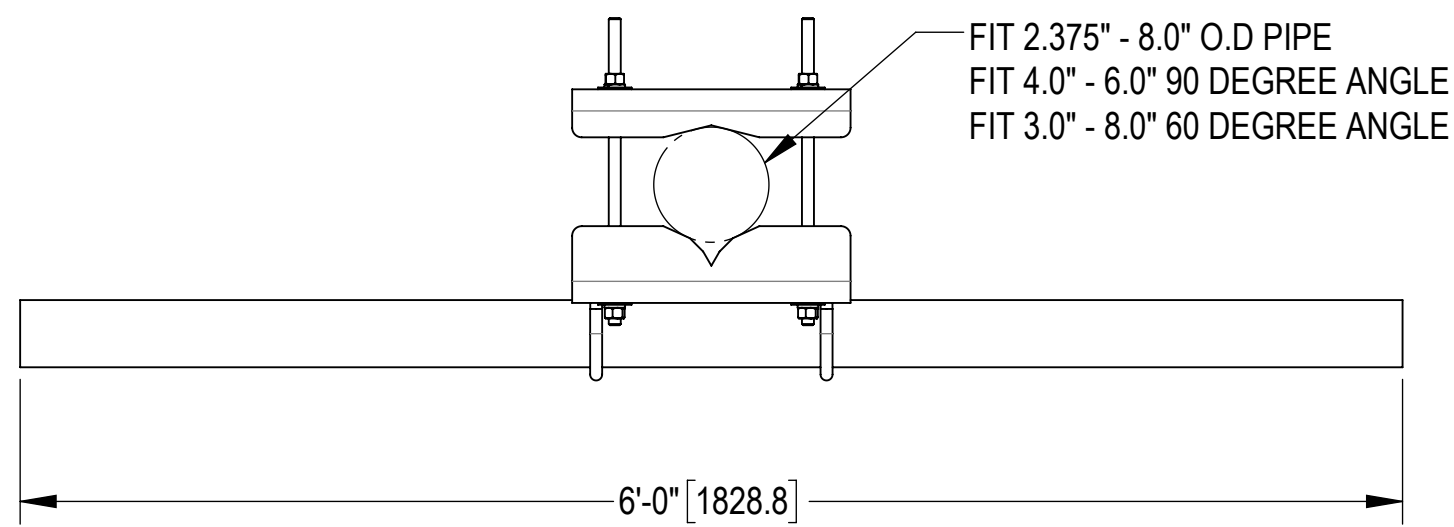


- 1.0 GENERAL NOTES
 1.1 ALL METRIC DIMENSIONS ARE IN BRACKETS [X.X]
 1.2 FOR PATENT INFO: <https://www.adwpat.com>
- 2.0 DESIGN NOTES
 2.1 ANY HAZARDS OR OBSTRUCTIONS TO THE CLIMBING FACILITY AND SAFETY CLIMB MUST BE IDENTIFIED PRIOR TO INSTALLING THE APPURTENANCE. ADDITIONAL PRODUCTS MAY BE REQUIRED TO MAINTAIN THE INTEGRITY OF THE SAFETY CLIMB. DURING INSTALLATION, TEMPORARY AND/OR PERMANENT PRECAUTIONARY MEASURES SHOULD BE TAKEN TO PRESERVE THE CLIMBING FACILITY AND/OR SAFETY CLIMB.
- 3.0 MANUFACTURING/SPECIAL REQUIREMENTS
 3.1 TIGHTEN ALL BOLTS SECURING FLAT PLATES BY THE TURN-OF-NUT METHOD. TIGHTEN ALL U-BOLTS USING TURN-OF-NUT METHOD WITH ATTENTION TO LEAVE EQUAL DISTANCE AND EQUAL FORCE ON EACH LEG OF THE U-BOLT.
- 4.0 TEST
- 5.0 PACKAGING
 5.1 PACKAGING SHALL MEET ANDREW REQUIREMENTS PER DOCUMENT IS-PL-3005
 5.2 PRINTED DOCUMENT TO BE PLACED INSIDE POLYBAG AND THEN IN SHIPPING CONTAINER
 5.3 EXTRA HARDWARE MAY BE SUPPLIED, BAGGED AND SHIPPED

REVISIONS			
REV.	DESCRIPTION	DATE	APPROVED
A	INITIAL RELEASE	MSM 03MAY10	
B	THREADED ROD WAS MT-381	MSM 13SEP12	
C	UPDATED BACK BRACKET & CHANGED THREADED ROD	MRC 11JUN20	BCROSS
D	UPDATED DRAWING FORMAT TO NEW	LL1090 24OCT25	BA1025 50105519AMO



COMPONENT PART NUMBERS PROVIDED FOR ASSEMBLY PURPOSES;
 INDIVIDUAL COMPONENTS MAY BE SHIPPED AS PARTS WITHIN AN INCLUDED KIT.

ITEM	PART NO.	DESCRIPTION	QTY.	WEIGHT	NOTE NO.
1	MT54772	3.5" OD X 72" PIPE	1	36.41 LBS	
2	MDSS01	MICROWAVE DISH STRUT SUPPORT CHANNEL	1	25.81 LBS	
3	MT-382-16	5/8" X 16" GALV THREADED ROD	4	1.38 LBS	
4	GUB-53560	5/8" X 3-5/8" X 6" GALV U-BOLT	2	1.30 LBS	
5	MTC4108-0011	BRACKET, MICROWAVE DISH SUPPORT	1	21.66 LBS	
6	GWF-05	5/8" GALV FLAT WASHER, 1.7OD	8	0.06 LBS	
7	GWL-05	5/8" GALV LOCK WASHER	8	0.03 LBS	
8	GN-05	5/8" GALV HEX NUT	8	0.08 LBS	

DENSITY	93.97	lbs/in ³
MASS	332.24	lbs
VOLUME	332.24	in ³
SURFACE AREA	2812.35	in ²
HEIGHT	72.0"	
LENGTH	18.9"	
WIDTH	12.0"	

ANDREW® an Amphenol company

TOLERANCES: 0 PLACE X[X] ± 0.25[6.3], 1 PLACE X[X] ± 0.12[3.0], 2 PLACE .XX[X] ± 0.06[1.5], ANGLES ± 2°

SAP MATERIAL MASTER: MD-SS-6R

FINISH: MATERIAL

NAME: CE, RW, AD, RE; DATE: 03MAY10, 10/30/2025; TITLE: TOWER LEG 6' STRUT SUPPORT

SCALE: 1:16; DOCUMENT NO.: MD-SS-6R

SIZE: C; AUTH GROUP: INSL; MODEL: 03; STATUS: RE; REVISION: D; DRAWING: 04; STATUS: RE; REVISION: D; SHEET: 1 OF 1

Confidential