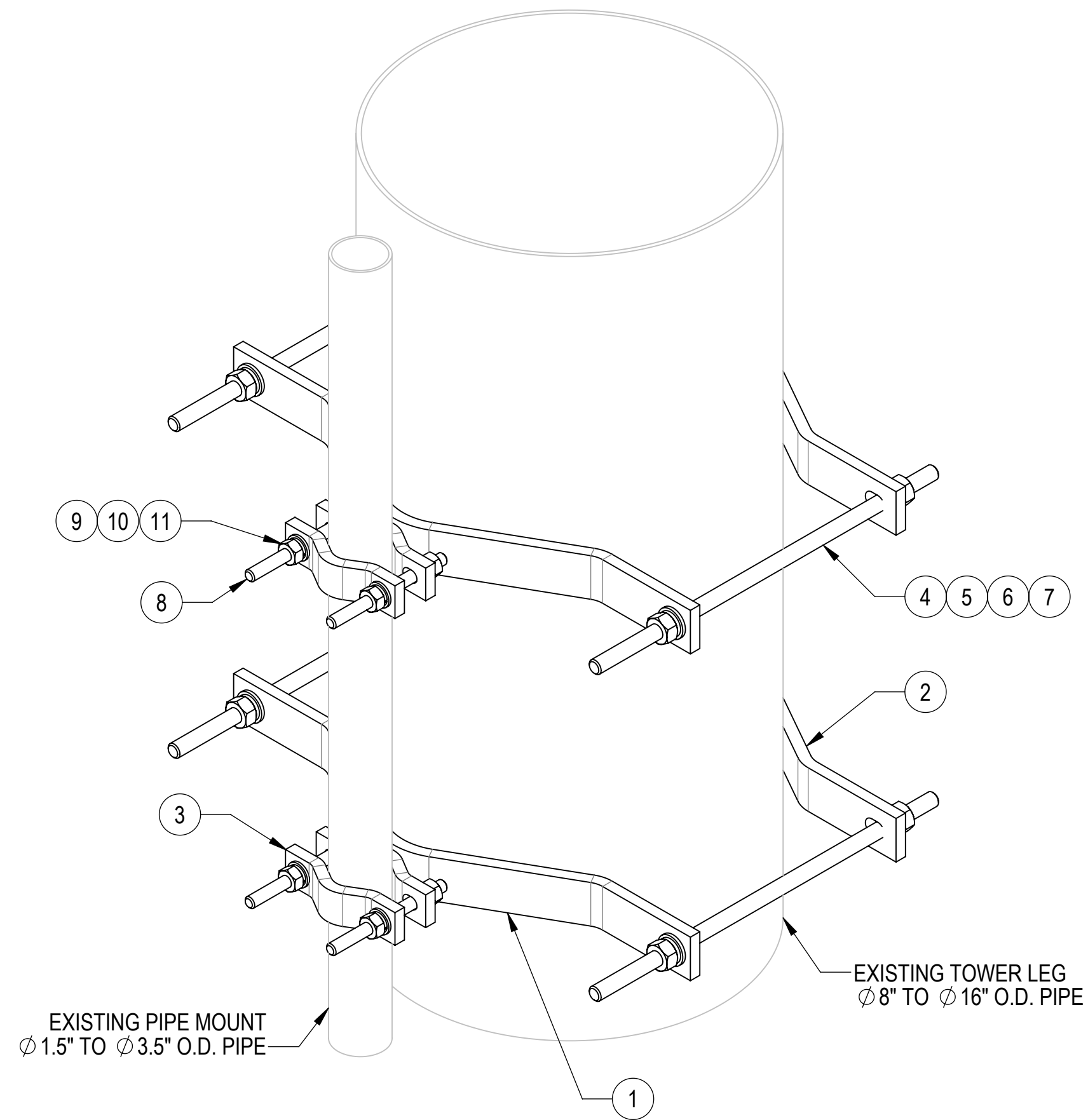


- 1.0 GENERAL NOTES
 1.1 ALL METRIC DIMENSIONS ARE IN BRACKETS [X. X]
 1.2 FOR PATENT INFO: <https://www.adwpat.com>
 2.0 DESIGN NOTES
 3.0 MANUFACTURING/SPECIAL REQUIREMENTS
 3.1 TIGHTEN ALL BOLTS SECURING FLAT PLATES BY THE TURN-OF-NUT METHOD. TIGHTEN ALL U-BOLTS USING TURN-OF-NUT METHOD WITH ATTENTION TO LEAVE EQUAL DISTANCE AND EQUAL FORCE ON EACH LEG OF THE U-BOLT.
 4.0 TEST
 5.0 PACKAGING
 5.1 PACKAGING SHALL MEET ANDREW REQUIREMENTS PER DOCUMENT IS-PL-3005
 5.2 PRINTED DOCUMENT TO BE PLACED INSIDE POLYBAG AND THEN IN SHIPPING CONTAINER
 5.3 EXTRA HARDWARE MAY BE SUPPLIED, BAGGED AND SHIPPED


REVISIONS			
REV.	DESCRIPTION	DATE	APPROVED
A	INITIAL RELEASE	JTS 04/06/01	
B	UPDATED DRAWING TO NEW FORMAT	RY1002 13OCT25	BA1025 50105335AMO



**COMPONENT PART NUMBERS PROVIDED FOR ASSEMBLY PURPOSES;
 INDIVIDUAL COMPONENTS MAY BE SHIPPED AS PARTS WITHIN AN INCLUDED KIT.**

ITEM	PART NO.	DESCRIPTION	QTY.	WEIGHT	NOTE NO.
1	LSA	SMALL TO LARGE ADAPTER HALVE	2	8.36 LBS	
2	LCP10	LARGE CLAMP HALF	2	7.17 LBS	
3	SCP10	CLAMP HALF: 1/2", 9/16" HOLE, 4-1/8" (EA)	2	1.20 LBS	
4	MT-382-18	5/8" X 18" GALV THREADED ROD	4	1.55 LBS	
5	GWFO5A	GALV FLAT WASHER HARDENED 5/8", 1.30D	8	0.04 LBS	
6	GWL-05	5/8" GALV LOCK WASHER	8	0.03 LBS	
7	GN-05A	5/8" GALV HEX NUT (A194 2H)	8	0.12 LBS	
8	MT-379-6	1/2" X 6" GALV THREADED ROD	4	0.33 LBS	
9	GWFO4A	1/2" GALV FLAT WASHER (A325)	8	0.02 LBS	
10	GWL-04	1/2" GALV LOCK WASHER	8	0.01 LBS	
11	GN-04A	1/2" GALV HEX NUT (A194 2H)	8	0.07 LBS	

DENSITY		lbs/in ³
MASS	43.41	lbs
VOLUME	154.01	in ³
SURFACE AREA	959.46	in ²
HEIGHT		
LENGTH	32"	
WIDTH	24"	



ANDREW® an Amphenol company

TOLERANCES		SAP MATERIAL MASTER	
1 PLACE .X[X] ± 0.06[1.5]	3 PLACE .XXX[X] ± 0.010[0.3]	LS-100	
2 PLACE .XX[X] ± 0.03[0.8]	ANGLES ± 2°		
FINISH		MATERIAL	
<small>UNLESS OTHERWISE SPECIFIED DIMENSIONS ARE IN INCHES INTERPRET PER ANSI Y 14.5M-1994</small>		NAME	DATE
		CE ACG	10/17/05
		RW RY1002	10/14/2025
		AD YMENG	10/16/2025
RE YMENG	10/16/2025	ADPTR, 1.5"-3.5" TO 8"-16" OD, PIPE-PIPE	
ECN 50105335AMO	SCALE 1:4	DOCUMENT NO. LS-100	
SIZE	Auth Group	INSL	MODEL
C			
VERSION	STATUS	REVISION	DRAWING
01	RE	B	01 RE B
			SHEET 1 OF 1

Confidential