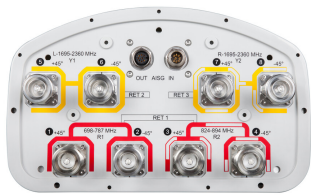


# SBJAHH-1D65C-DL



8-port sector antenna, 2x 698–787, 2x 824-894 and 4x 1695–2360 MHz, 65°HPBW, 3x RET and low bands have diplexers

- Independent tilt for high bands and single tilt for low bands
- Interleaved dipole technology providing for attractive, low wind load mechanical package

### OBSOLETE

This product was discontinued on: November 30, 2023

#### Replaced By:

NNH4-65C-R8D      8 ft, 12-Port Multiband Antenna, 4 x 698-894, 8 x 1695-2360 MHz, independent tilt for the 700 and 850 MHz bands through diplexing of the low band arrays, 8 x RETs

## General Specifications

Antenna Type	Sector
Band	Multiband
Color	Light Gray (RAL 7035)
Grounding Type	RF connector inner conductor and body grounded to reflector and mounting bracket
Performance Note	Outdoor usage   Wind loading figures are validated by wind tunnel measurements described in white paper WP-112534-EN
Radome Material	Fiberglass, UV resistant
Radiator Material	Copper   Low loss circuit board
Reflector Material	Aluminum
RF Connector Interface	7-16 DIN Female
RF Connector Location	Bottom
RF Connector Quantity, high band	4
RF Connector Quantity, mid band	0
RF Connector Quantity, low band	4
RF Connector Quantity, total	8

## Remote Electrical Tilt (RET) Information

RET Interface	8-pin DIN Female   8-pin DIN Male
RET Interface, quantity	1 female   1 male

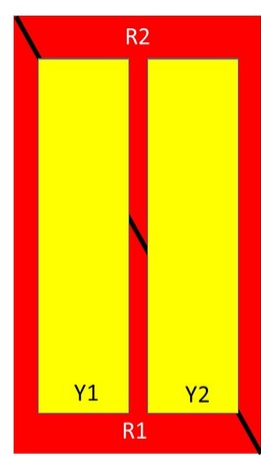
# SBJAHH-1D65C-DL

Input Voltage	10–30 Vdc
Internal RET	High band (2)   Low band (1)
Power Consumption, idle state, maximum	2 W
Power Consumption, normal conditions, maximum	13 W
Protocol	3GPP/AISG 2.0 (Multi-RET)

## Dimensions

Width	301 mm   11.85 in
Depth	181 mm   7.126 in
Length	2453 mm   96.575 in
Net Weight, without mounting kit	26 kg   57.32 lb

## Array Layout



Array	Freq (MHz)	Conns	RET (MRET)	AISG RET UID
R1	698-787	1-2	1	Arxxxxxxxxxxxxxxxxx.1
R2	824-894	3-4		
Y1	1695-2360	5-6	2	Arxxxxxxxxxxxxxxxxx.2
Y2	1695-2360	7-8	3	Arxxxxxxxxxxxxxxxxx.3

Left

Right

Bottom

(Sizes of colored boxes are not true depictions of array sizes)

## Electrical Specifications

Impedance	50 ohm
Operating Frequency Band	1695 – 2360 MHz   698 – 787 MHz   824 – 894 MHz
Polarization	±45°

## Electrical Specifications

Frequency Band, MHz	698–787	824–894	1695–1880	1850–1990	1920–2200	2300–2360
Gain, dBi	15.6	15.4	17.5	17.8	18.2	18.4

# SBJAHH-1D65C-DL

Beamwidth, Horizontal, degrees	66.7	63	71	66	64	58
Beamwidth, Vertical, degrees	9.2	7.9	5.7	5.2	4.9	4.5
Beam Tilt, degrees	0–11	0–11	0–7	0–7	0–7	0–7
USLS (First Lobe), dB	13	15	19	19	18	17
Front-to-Back Ratio at 180°, dB	29	32	31	29	28	31
Isolation, Cross Polarization, dB	25	25	25	25	25	25
Isolation, Inter-band, dB	30	30	30	30	30	30
VSWR   Return loss, dB	1.5   14.0	1.5   14.0	1.5   14.0	1.5   14.0	1.5   14.0	1.5   14.0
PIM, 3rd Order, 2 x 20 W, dBc	-153	-153	-153	-153	-153	-153
Input Power per Port at 50°C, maximum, watts	250	250	300	300	300	300

## Mechanical Specifications

Effective Projective Area (EPA), frontal	0.37 m <sup>2</sup>   3.983 ft <sup>2</sup>
Effective Projective Area (EPA), lateral	0.31 m <sup>2</sup>   3.337 ft <sup>2</sup>
Wind Loading @ Velocity, frontal	396.0 N @ 150 km/h (89.0 lbf @ 150 km/h)
Wind Loading @ Velocity, lateral	333.0 N @ 150 km/h (74.9 lbf @ 150 km/h)
Wind Loading @ Velocity, maximum	762.0 N @ 150 km/h (171.3 lbf @ 150 km/h)
Wind Loading @ Velocity, rear	401.0 N @ 150 km/h (90.1 lbf @ 150 km/h)
Wind Speed, maximum	241 km/h (150 mph)

## Packaging and Weights

Width, packed	409 mm   16.102 in
Depth, packed	299 mm   11.772 in
Length, packed	2572 mm   101.26 in
Weight, gross	38.7 kg   85.319 lb

## Regulatory Compliance/Certifications

Agency	Classification
ISO 9001:2015	Designed, manufactured and/or distributed under this quality management system

## Included Products

BSAMNT-3	–	Wide Profile Antenna Downtilt Mounting Kit for 2.4 - 4.5 in (60 - 115 mm) OD round members.
----------	---	---

# SBJAHH-1D65C-DL

---

Kit contains one scissor top bracket set and one bottom bracket set.

\* Footnotes

**Performance Note**      Severe environmental conditions may degrade optimum performance

# BSAMNT-3



Wide Profile Antenna Downtilt Mounting Kit for 2.4 - 4.5 in (60 - 115 mm) OD round members. Kit contains one scissor top bracket set and one bottom bracket set.

## Product Classification

**Product Type** Downtilt mounting kit

## General Specifications

**Application** Outdoor

**Color** Silver

## Dimensions

**Compatible Diameter, maximum** 115 mm | 4.528 in

**Compatible Diameter, minimum** 60 mm | 2.362 in

**Weight, net** 6.2 kg | 13.669 lb

## Material Specifications

**Material Type** Galvanized steel

## Packaging and Weights

**Included** Brackets | Hardware

**Packaging quantity** 1

**Weight, gross** 6.4 kg | 14.11 lb

## Regulatory Compliance/Certifications

Agency	Classification
CE	Compliant with the relevant CE product directives
CHINA-ROHS	Below maximum concentration value
ISO 9001:2015	Designed, manufactured and/or distributed under this quality management system
REACH-SVHC	Compliant as per SVHC revision on <a href="http://www.andrew.com/ProductCompliance">www.andrew.com/ProductCompliance</a>
ROHS	Compliant
UK-ROHS	Compliant

