

LNx-6515DS-A1M



2-port sector antenna, 2x 698–896 MHz, 65° HPBW, 1x RET

- Excellent choice to maximize both coverage and capacity in suburban and rural applications
- Fully compatible with Andrew remote electrical tilt system for greater OpEx savings
- Exceptional horizontal pattern roll-off and strong front-to-back ratio
- Extended bandwidth allows one antenna to serve multiple frequency allocations
- Great solution to maximize network coverage and capacity
- The RF connectors are designed for IP67 rating and the radome for IP56 rating

OBSOLETE

This product was discontinued on: November 30, 2023

General Specifications

Antenna Type	Sector
Band	Single band
Color	Light Gray (RAL 7035)
Grounding Type	RF connector inner conductor and body grounded to reflector and mounting bracket
Performance Note	Outdoor usage Wind loading figures are validated by wind tunnel measurements described in white paper WP-112534-EN
Radome Material	Fiberglass, UV resistant
Radiator Material	Aluminum
RF Connector Interface	7-16 DIN Female
RF Connector Location	Bottom
RF Connector Quantity, high band	0
RF Connector Quantity, mid band	0
RF Connector Quantity, low band	2
RF Connector Quantity, total	2

Dimensions

Width	301 mm 11.85 in
Depth	180.5 mm 7.106 in
Length	2650 mm 104.331 in
Net Weight, without mounting kit	20.2 kg 44.533 lb

LNx-6515DS-A1M

Electrical Specifications

Impedance	50 ohm
Operating Frequency Band	698 – 896 MHz
Polarization	±45°

Electrical Specifications

Frequency Band, MHz	698–806	806–896
Gain, dBi	16.7	17.6
Beamwidth, Horizontal, degrees	65	63.8
Beamwidth, Vertical, degrees	9.7	8.6
Beam Tilt, degrees	0–8	0–8
USLS (First Lobe), dB	17	17
Front-to-Back Ratio at 180°, dB	32	27
Isolation, Cross Polarization, dB	30	30
VSWR Return loss, dB	1.4 15.6	1.4 15.6
PIM, 3rd Order, 2 x 20 W, dBc	-153	-153
Input Power per Port, maximum, watts	400	400

Mechanical Specifications

Wind Loading @ Velocity, frontal	396.0 N @ 150 km/h (89.0 lbf @ 150 km/h)
Wind Loading @ Velocity, lateral	333.0 N @ 150 km/h (74.9 lbf @ 150 km/h)
Wind Loading @ Velocity, maximum	762.0 N @ 150 km/h (171.3 lbf @ 150 km/h)
Wind Loading @ Velocity, rear	401.0 N @ 150 km/h (90.1 lbf @ 150 km/h)
Wind Speed, maximum	241 km/h (150 mph)

Packaging and Weights

Width, packed	411 mm 16.181 in
Depth, packed	284 mm 11.181 in
Length, packed	2765 mm 108.858 in
Weight, gross	40.5 kg 89.287 lb

Regulatory Compliance/Certifications

Agency	Classification
CHINA-ROHS	Below maximum concentration value

LNx-6515DS-A1M

ISO 9001:2015	Designed, manufactured and/or distributed under this quality management system
ROHS	Compliant
UK-ROHS	Compliant



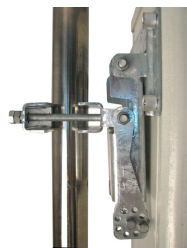
Included Products

BSAMNT-M	– Middle Downtilt Mounting Kit for Long Antennas for 2.4 - 4.5 in (60 - 115 mm) OD round members. Kit contains one scissor bracket set.
----------	---

* Footnotes

Performance Note	Severe environmental conditions may degrade optimum performance
-------------------------	---

BSAMNT-M



Middle Downtilt Mounting Kit for Long Antennas for 2.4 - 4.5 in (60 - 115 mm) OD round members. Kit contains one scissor bracket set.

Product Classification

Product Type Downtilt mounting kit

General Specifications

Application Outdoor

Color Silver

Dimensions

Compatible Diameter, maximum 115 mm | 4.528 in

Compatible Diameter, minimum 60 mm | 2.362 in

Weight, net 4.5 kg | 9.921 lb

Material Specifications

Material Type Galvanized steel

Packaging and Weights

Included Brackets | Hardware

Packaging quantity 1

Regulatory Compliance/Certifications

Agency	Classification
CHINA-ROHS	Below maximum concentration value
ISO 9001:2015	Designed, manufactured and/or distributed under this quality management system
REACH-SVHC	Compliant as per SVHC revision on www.andrew.com/ProductCompliance
ROHS	Compliant
UK-ROHS	Compliant

