

FFHH-65B-R3



8-port sector antenna, 4x 617-806 and 4x 1695–2360 MHz, 65° HPBW, 3x RET, 600 MHz-Ready Antenna Technology

OBSOLETE

This product was discontinued on: March 30, 2024

General Specifications

Antenna Type	Sector
Band	Multiband
Color	Light Gray (RAL 7035)
Grounding Type	RF connector inner conductor and body grounded to reflector and mounting bracket
Performance Note	Outdoor usage Wind loading figures are validated by wind tunnel measurements described in white paper WP-112534-EN
Radome Material	Fiberglass, UV resistant
Radiator Material	Aluminum Low loss circuit board
Reflector Material	Aluminum
RF Connector Interface	4.3-10 Female
RF Connector Location	Bottom
RF Connector Quantity, high band	4
RF Connector Quantity, mid band	0
RF Connector Quantity, low band	4
RF Connector Quantity, total	8

Remote Electrical Tilt (RET) Information

RET Interface	8-pin DIN Female 8-pin DIN Male
RET Interface, quantity	1 female 1 male
Input Voltage	10–30 Vdc
Internal RET	High band (2) Low band (1)
Power Consumption, idle state, maximum	1 W


FFHH-65B-R3

Power Consumption, normal conditions, maximum	10 W
Protocol	3GPP/AISG 2.0 (Single RET)

Dimensions

Width	640 mm 25.197 in
Depth	235 mm 9.252 in
Length	1830 mm 72.047 in
Net Weight, without mounting kit	46 kg 101.413 lb

Array Layout



Left Right
Bottom

Array	Freq (MHz)	Conns	RET (SRET)	AISG RET UID
R1	617-806	1-2	1	ANxxxxxxxxxxxxxxxxx1
R2	617-806	3-4		
Y1	1695-2360	5-6	2	ANxxxxxxxxxxxxxxxxx2
Y2	1695-2360	7-8	3	ANxxxxxxxxxxxxxxxxx3

(Sizes of colored boxes are not true depictions of array sizes)

Port Configuration

FFHH-65B-R3



Electrical Specifications

Impedance	50 ohm
Operating Frequency Band	1695 – 2360 MHz 617 – 806 MHz
Polarization	±45°
Total Input Power, maximum	900 W @ 50 °C

Electrical Specifications

Frequency Band, MHz	617–698	698–806	1695–1880	1850–1990	1920–2200	2300–2360
Gain, dBi	14.1	14.3	17.6	18.4	19	19.7
Beamwidth, Horizontal, degrees	65	60	66	60	60	54
Beamwidth, Vertical, degrees	14.9	13.3	5.7	5.3	4.9	4.4
Beam Tilt, degrees	2–14	2–14	2–12	2–12	2–12	2–12
USLS (First Lobe), dB	19	17	20	19	19	20
Front-to-Back Ratio at 180°, dB	33	29	36	40	40	42
Isolation, Cross Polarization, dB	28	28	28	28	28	28
Isolation, Inter-band, dB	28	28	28	28	28	28
VSWR Return loss, dB	1.5 14.0	1.5 14.0	1.5 14.0	1.5 14.0	1.5 14.0	1.5 14.0

FFHH-65B-R3

PIM, 3rd Order, 2 x 20 W, dBc	-153	-153	-153	-153	-153
Input Power per Port at 50°C, maximum, watts	250	250	200	200	200

Mechanical Specifications

Wind Loading @ Velocity, frontal	765.0 N @ 150 km/h (172.0 lbf @ 150 km/h)
Wind Loading @ Velocity, lateral	251.0 N @ 150 km/h (56.4 lbf @ 150 km/h)
Wind Loading @ Velocity, maximum	1,041.0 N @ 150 km/h (234.0 lbf @ 150 km/h)
Wind Loading @ Velocity, rear	788.0 N @ 150 km/h (177.1 lbf @ 150 km/h)
Wind Speed, maximum	241 km/h (150 mph)

Packaging and Weights

Width, packed	752 mm 29.606 in
Depth, packed	387 mm 15.236 in
Length, packed	1982 mm 78.032 in
Weight, gross	57 kg 125.663 lb

Regulatory Compliance/Certifications

Agency	Classification
CHINA-ROHS	Below maximum concentration value
ISO 9001:2015	Designed, manufactured and/or distributed under this quality management system
REACH-SVHC	Compliant as per SVHC revision on www.andrew.com/ProductCompliance
ROHS	Compliant
UK-ROHS	Compliant



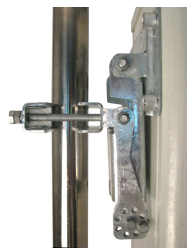
Included Products

BSAMNT-4	–	Wide Profile Antenna Downtilt Mounting Kit for 2.4 - 4.5 in (60 - 115 mm) OD round members. Kit contains one scissor top bracket set and one bottom bracket set.
----------	---	--

* Footnotes

Performance Note	Severe environmental conditions may degrade optimum performance
-------------------------	---

BSAMNT-4



Wide Profile Antenna Downtilt Mounting Kit for 2.4 - 4.5 in (60 - 115 mm) OD round members. Kit contains one scissor top bracket set and one bottom bracket set.

Product Classification

Product Type Downtilt mounting kit

General Specifications

Application Outdoor

Color Silver

Dimensions

Compatible Diameter, maximum 115 mm | 4.528 in

Compatible Diameter, minimum 60 mm | 2.362 in

Weight, net 6.5 kg | 14.33 lb

Material Specifications

Material Type Galvanized steel

Packaging and Weights

Included Brackets | Hardware

Packaging quantity 1

Regulatory Compliance/Certifications

Agency	Classification
CHINA-ROHS	Below maximum concentration value
ISO 9001:2015	Designed, manufactured and/or distributed under this quality management system
REACH-SVHC	Compliant as per SVHC revision on www.andrew.com/ProductCompliance
ROHS	Compliant
UK-ROHS	Compliant

