

CMAX-EXT-43-153



Cell-Max™ Low PIM Directional Outdoor Antenna, 698–960 MHz and 1710–2700 MHz, 4.3-10

Product Classification

| | |
|----------------------|-------------------------------|
| Product Type | Over-the-head stadium antenna |
| Product Brand | Cell-Max™ |

General Specifications

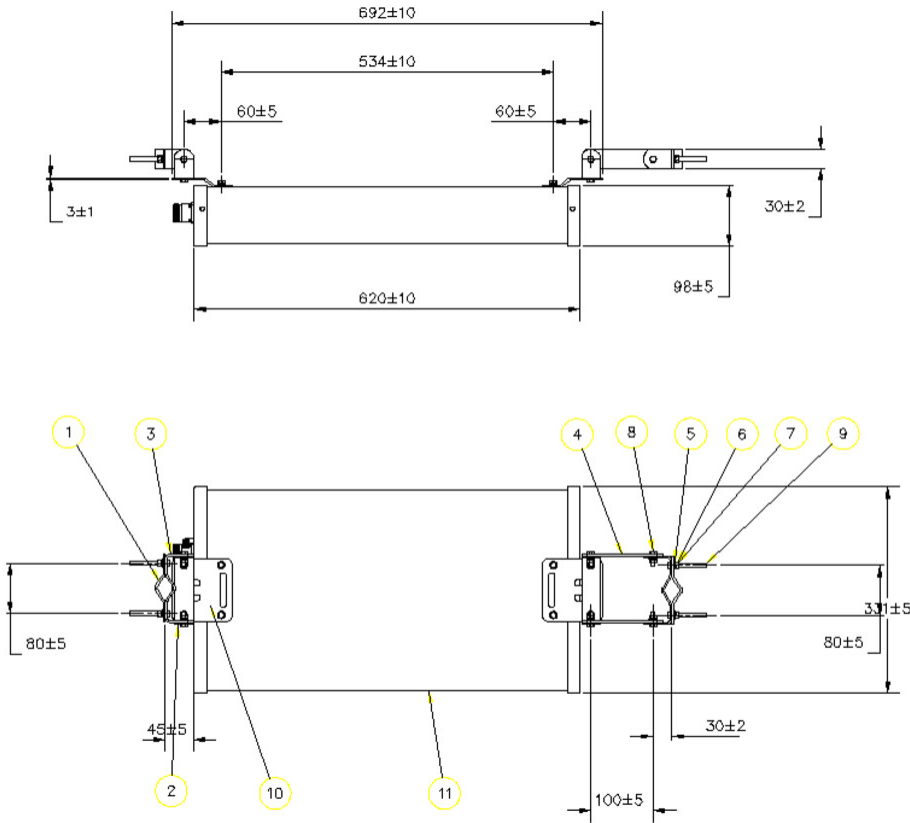
| | |
|-------------------------------------|---|
| Application | Indoor/Outdoor |
| Antenna Type | Directional |
| Antenna Array Characteristic | SISO |
| Polarization | Vertical |
| Color | White (RAL 9016) |
| Mounting | Poles between 25–60 mm with supplied clamps |
| Number of Ports | 1 |
| Radome Material | PVC, UV resistant |
| RF Connector Interface | 4.3-10 Female |

Dimensions

| | |
|---------------|--------------------|
| Width | 331 mm 13.032 in |
| Depth | 98 mm 3.858 in |
| Length | 620 mm 24.409 in |

CMAX-EXT-43-153

Outline Drawing



Electrical Specifications

| | |
|---------------------------------|---|
| Impedance | 50 ohm |
| Lightning Protection | dc Ground |
| Operating Frequency Band | 1710 – 2700 MHz 698 – 960 MHz |
| Electrical Note | Values typical, unless otherwise stated |

Electrical Specifications

| Frequency Band, MHz | 698–800 | 800–960 | 1710–2200 | 2200–2700 |
|--|----------|----------|-----------|-----------|
| Gain, dBi | 10 | 11 | 11 | 11 |
| Beamwidth, Horizontal, degrees | 68 | 60 | 60 | 52 |
| Beamwidth, Vertical, degrees | 30 | 28 | 30 | 30 |
| Front-to-Back Ratio at 180°, dB | 18 | 18 | 20 | 20 |
| VSWR Return loss, dB | 1.8 10.9 | 1.8 10.9 | 1.8 10.9 | 1.8 10.9 |
| PIM, 3rd Order, 2 x 20 W, dBc | -153 | -153 | -153 | -153 |

CMAX-EXT-43-153

Input Power per Port, maximum, watts 100 100 100 100

Mechanical Specifications

Wind Loading @ Velocity, maximum 686.0 N @ 216 km/h (154.2 lbf @ 216 km/h)

Wind Speed, maximum 216 km/h (134 mph)

Environmental Specifications

Operating Temperature -40 °C to +60 °C (-40 °F to +140 °F)

Relative Humidity Up to 100%

Ingress Protection Test Method IEC 60529:2001, IP65

Packaging and Weights

Width, packed 350 mm | 13.78 in

Depth, packed 160 mm | 6.299 in

Length, packed 830 mm | 32.677 in

Packaging quantity 1

Weight, gross 7.4 kg | 16.314 lb

Weight, net 4.7 kg | 10.362 lb

Regulatory Compliance/Certifications

| Agency | Classification |
|---------------|--|
| CHINA-ROHS | Below maximum concentration value |
| ISO 9001:2015 | Designed, manufactured and/or distributed under this quality management system |
| REACH-SVHC | Compliant as per SVHC revision on www.andrew.com/ProductCompliance |
| ROHS | Compliant |
| UK-ROHS | Compliant |

