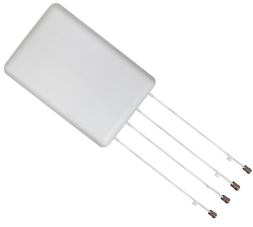


# CMAX-DMF-43-UW-153



Low PIM Directional MIMO In-Building Antenna, 617–960 MHz, 1695–2700 MHz, 3300–4200MHz, and 4800–6000MHz 4.3-10, (2 PORTS 617-960 and 1695-2700MHz, 2 PORTS 3300-4200 and 4800-6000MHz)

## Product Classification

**Product Type** In-building antenna

## General Specifications

**Application** Indoor  
**Antenna Type** Directional  
**Antenna Array Characteristic** MIMO 2x2  
**Polarization**  $\pm 45^\circ$   
**Color** White (RAL 9016)  
**Number of Ports** 4  
**Pigtail Cable** 670-141SXE, plenum rated  
**Radome Material** ASA+PC, UV stabilized  
**RF Connector Interface** 4.3-10 Female

## Dimensions

**Height** 120 mm | 4.724 in  
**Width** 310 mm | 12.205 in  
**Length** 450 mm | 17.717 in  
**Pigtail Length** 450 mm | 17.717 in

## Electrical Specifications

**Impedance** 50 ohm  
**Operating Frequency Band** 1695 – 2700 MHz | 3300 – 4000 MHz | 4800 – 6000 MHz | 617 – 698 MHz | 698 – 960 MHz  
**Electrical Note** Values typical, unless otherwise stated

## Electrical Specifications

Frequency Band, MHz	617–698	698–960	1695–2200	2200–2700	3300–4200	4800–6000
---------------------	---------	---------	-----------	-----------	-----------	-----------

# CMAX-DMF-43-UW-153

<b>Gain, dBi</b>	7.7	7.9	8.8	9	8	8.2
<b>Beamwidth, Horizontal, degrees</b>	75	73	62	64	64	62
<b>Beamwidth, Vertical, degrees</b>	72	66	57	64	65	61
<b>Front-to-Back Ratio, Copolarization 180° ± 30°, dB</b>	17	17	20	15	17	17
<b>Isolation, Cross Polarization, dB</b>	20	20	25	25	20	22
<b>VSWR   Return loss, dB</b>	1.7 11.7	1.6 12.7	1.5 14.0	1.5 14.0	1.7 11.7	1.7 11.7
<b>PIM, 3rd Order, 2 x 20 W, dBc</b>	-153	-153	-153	-153	-153	-153
<b>Input Power per Port, maximum, watts</b>	100	100	100	100	100	100

## Environmental Specifications

<b>Operating Temperature</b>	-40 °C to +60 °C (-40 °F to +140 °F)
<b>Relative Humidity</b>	Up to 100%

## Packaging and Weights

<b>Height, packed</b>	190 mm   7.48 in
<b>Width, packed</b>	340 mm   13.386 in
<b>Length, packed</b>	645 mm   25.394 in
<b>Included</b>	Mounting bracket
<b>Weight, gross</b>	4.6 kg   10.141 lb
<b>Weight, net</b>	3.1 kg   6.834 lb

## Regulatory Compliance/Certifications

<b>Agency</b>	<b>Classification</b>
CHINA-ROHS	Below maximum concentration value
REACH-SVHC	Compliant as per SVHC revision on <a href="http://www.andrew.com/ProductCompliance">www.andrew.com/ProductCompliance</a>
ROHS	Compliant
UK-ROHS	Compliant

