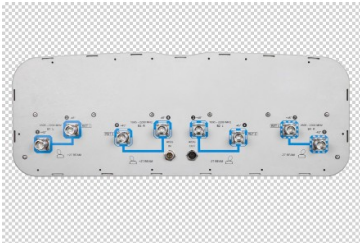


2HH-38A-R4-V2



8-port multibeam antenna, 8x 1695–2200 MHz, 4x 38° HPBW, 4x RET

- Enhances network capacity through six sectors site application with only three antenna faces
- Maximizes frequency spectrum utilization to increase Average Revenue Per User (ARPU)
- Reduces antenna count to minimize Cap-Ex and Op-Ex costs
- High gain with excellent sector edge roll-off and azimuth sidelobe suppression
- Each antenna downtilt can be independently adjusted for greater flexibility in network optimization

General Specifications

Antenna Type	Multi-beam
Band	Single band
Color	Light Gray (RAL 7035)
Grounding Type	RF connector inner conductor and body grounded to reflector and mounting bracket
Performance Note	Outdoor usage Wind loading figures are validated by wind tunnel measurements described in white paper WP-112534-EN
Radome Material	Fiberglass, UV resistant
Radiator Material	Low loss circuit board
Reflector Material	Aluminum
RF Connector Interface	4.3-10 Female
RF Connector Location	Bottom
RF Connector Quantity, high band	8
RF Connector Quantity, mid band	0
RF Connector Quantity, low band	0
RF Connector Quantity, total	8

Remote Electrical Tilt (RET) Information

RET Interface	8-pin DIN Female 8-pin DIN Male
RET Interface, quantity	1 female 1 male
Input Voltage	10–30 Vdc
Internal RET	High band (4)
Power Consumption, idle state, maximum	1 W
Power Consumption, normal conditions, maximum	10 W

2HH-38A-R4-V2

Protocol 3GPP/AISG 2.0 (Single RET)

Dimensions

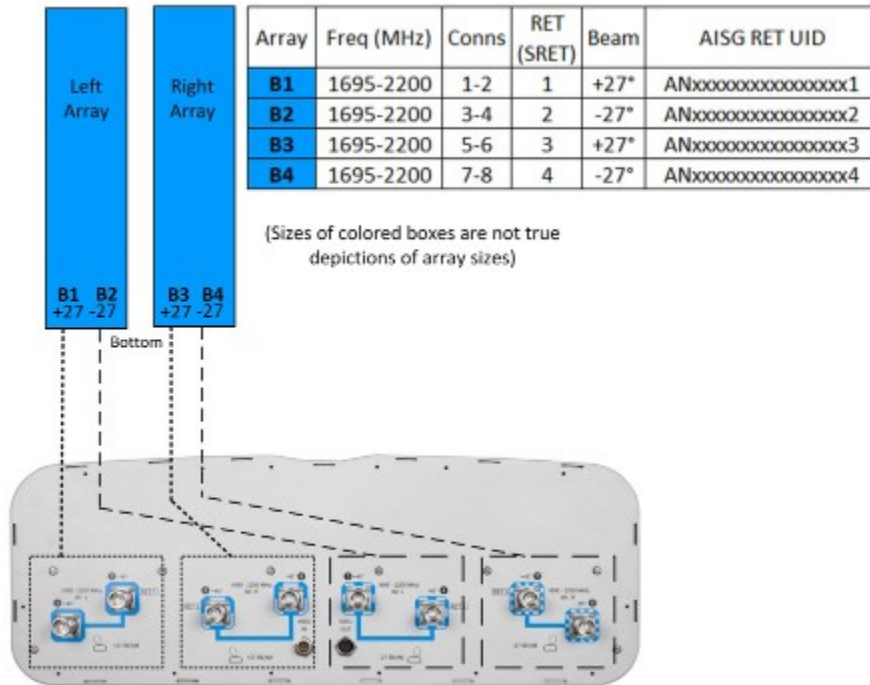
Width 640 mm | 25.197 in

Depth 235 mm | 9.252 in

Length 1224 mm | 48.189 in

Net Weight, without mounting kit 29.7 kg | 65.477 lb

Array Layout



Port Configuration

2HH-38A-R4-V2



Electrical Specifications

Impedance	50 ohm
Operating Frequency Band	1695 – 2200 MHz
Polarization	±45°
Total Input Power, maximum	900 W @ 50 °C

Electrical Specifications

Frequency Band, MHz	1695–1880	1850–1990	1920–2200
Gain, dBi	19.3	19.7	20
Beam Centers, Horizontal, degrees	±27	±27	±27
Beamwidth, Horizontal, degrees	38	35.8	34
Beamwidth, Vertical, degrees	7.7	7.3	6.8
Beam Tilt, degrees	2–10	2–10	2–10
Horizontal Sidelobe, dB	24	24	23
USLS (First Lobe), dB	24	24	24
Front-to-Back Ratio at 180°, dB	36	36	34
CPR at Boresight, dB	21	22	21
Isolation, Cross Polarization, dB	30	30	30
Isolation, Inter-band, dB	17	17	17
VSWR Return loss, dB	1.43 15.0	1.43 15.0	1.43 15.0
PIM, 3rd Order, 2 x 20 W, dBc	-153	-153	-153

2HH-38A-R4-V2

Input Power per Port at 50°C, maximum, watts 200 200 200

Mechanical Specifications

Wind Loading @ Velocity, frontal 505.0 N @ 150 km/h (113.5 lbf @ 150 km/h)
Wind Loading @ Velocity, lateral 156.0 N @ 150 km/h (35.1 lbf @ 150 km/h)
Wind Loading @ Velocity, maximum 688.0 N @ 150 km/h (154.7 lbf @ 150 km/h)
Wind Loading @ Velocity, rear 520.0 N @ 150 km/h (116.9 lbf @ 150 km/h)
Wind Speed, maximum 241 km/h (150 mph)

Packaging and Weights

Width, packed 752 mm | 29.606 in
Depth, packed 387 mm | 15.236 in
Length, packed 1379 mm | 54.291 in
Weight, gross 44.1 kg | 97.224 lb

Regulatory Compliance/Certifications

Agency	Classification
CHINA-ROHS	Above maximum concentration value
ISO 9001:2015	Designed, manufactured and/or distributed under this quality management system
REACH-SVHC	Compliant as per SVHC revision on www.andrew.com/ProductCompliance
ROHS	Compliant/Exempted
UK-ROHS	Compliant/Exempted



Included Products

BSAMNT-3 – Wide Profile Antenna Downtilt Mounting Kit for 2.4 - 4.5 in (60 - 115 mm) OD round members. Kit contains one scissor top bracket set and one bottom bracket set.

* Footnotes

Performance Note Severe environmental conditions may degrade optimum performance

BSAMNT-3



Wide Profile Antenna Downtilt Mounting Kit for 2.4 - 4.5 in (60 - 115 mm) OD round members. Kit contains one scissor top bracket set and one bottom bracket set.

Product Classification

Product Type Downtilt mounting kit

General Specifications

Application Outdoor

Color Silver

Dimensions

Compatible Diameter, maximum 115 mm | 4.528 in

Compatible Diameter, minimum 60 mm | 2.362 in

Weight, net 6.2 kg | 13.669 lb

Material Specifications

Material Type Galvanized steel

Packaging and Weights

Included Brackets | Hardware

Packaging quantity 1

Weight, gross 6.4 kg | 14.11 lb

Regulatory Compliance/Certifications

Agency	Classification
CE	Compliant with the relevant CE product directives
CHINA-ROHS	Below maximum concentration value
ISO 9001:2015	Designed, manufactured and/or distributed under this quality management system
ROHS	Compliant
UK-ROHS	Compliant



BSAMNT-3

