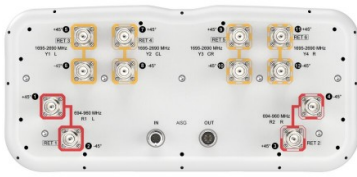


RRV4-65M-R6N43



12-port sector antenna, 4x 694–960 and 8x 1695–2690 MHz, 65° HPBW, 6x RET

- Compact Form Factor: Designed for maximum efficiency and space-saving installation
- Symmetrical Low & High Band Arrays: Delivers consistent electrical performance and supports 4T4R (4x MIMO) on both Low and High bands
- Optimized Antenna Shape: Minimizes wind load for enhanced stability and durability

General Specifications

Antenna Type	Sector
Band	Multiband
Grounding Type	RF connector inner conductor and body grounded to reflector and mounting bracket
Performance Note	Outdoor usage
RF Connector Interface	4.3-10 Female
RF Connector Location	Bottom
RF Connector Quantity, mid band	8
RF Connector Quantity, low band	4
RF Connector Quantity, total	12

Remote Electrical Tilt (RET) Information

RET Hardware	CommRET v2
RET Interface	8-pin DIN Female 8-pin DIN Male
RET Interface, quantity	1 female 1 male
Input Voltage	10–30 Vdc
Internal RET	Low band (2) Mid band (4)
Power Consumption, active state, maximum	8 W
Power Consumption, idle state, maximum	1 W
Protocol	3GPP/AISG 2.0 (Single RET)

Dimensions


Width	430 mm 16.929 in
Depth	197 mm 7.756 in

RRV4-65M-R6N43

Length 1000 mm | 39.37 in

Net Weight, without mounting kit 22 kg | 48.502 lb

Array Layout



Array ID	Frequency (MHz)	RF Connector	RET (RET)	AISG No.	RET UID
R1	694-960	1 - 2	1	AISG1	CPxxxxxxxxxxxxxxxxR1
R2	694-960	3 - 4	2	AISG1	CPxxxxxxxxxxxxxxxxR2
Y1	1695-2690	5 - 6	3	AISG1	CPxxxxxxxxxxxxxxxxY1
Y2	1695-2690	7 - 8	4	AISG1	CPxxxxxxxxxxxxxxxxY2
Y3	1695-2690	9 - 10	5	AISG1	CPxxxxxxxxxxxxxxxxY3
Y4	1695-2690	11 - 12	6	AISG1	CPxxxxxxxxxxxxxxxxY4

(Sizes of colored boxes are not true depictions of array sizes)

Port Configuration



RRV4-65M-R6N43

Electrical Specifications

Impedance	50 ohm
Operating Frequency Band	1695 – 2690 MHz 694 – 960 MHz
Polarization	±45°
Total Input Power, maximum	900 W @ 50 °C

Electrical Specifications

	R1,R2	R1,R2	R1,R2	Y1,Y2,Y3,Y4	Y1,Y2,Y3,Y4	Y1,Y2,Y3,Y4	Y1,Y2,Y3,Y4
Frequency Band, MHz	698–806	790–894	890–960	1695–1995	1920–2300	2300–2500	2490–2690
RF Port	1-4	1-4	1-4	5-12	5-12	5-12	5-12
Gain at Mid Tilt, dBi	11.3	11.6	12	14.5	15.4	16	16.3
Beamwidth, Horizontal, degrees	61	53	51	66	61	56	57
Beamwidth, Vertical, degrees	22.9	20.6	19.5	10.8	9.7	8.8	8.5
Beam Tilt, degrees	3–16	3–16	3–16	2–12	2–12	2–12	2–12
USLS (First Lobe), dB	16	15	16	15	16	18	17
Front-to-Back Ratio at 180°, dB	25	24	26	30	29	33	33
Front-to-Back Total Power at 180° ± 30°, dB	17	17	19	25	26	27	27
CPR at Boresight, dB	20	15	18	17	20	22	19
Isolation, Cross Polarization, dB	23	23	23	23	23	23	23
Isolation, Inter-band, dB	23	23	23	23	23	23	23
VSWR Return loss, dB	1.5 14.0	1.5 14.0	1.5 14.0	1.5 14.0	1.5 14.0	1.5 14.0	1.5 14.0
PIM, 3rd Order, 2 x 20 W, dBc	-150	-150	-150	-150	-150	-150	-150
Input Power per Port at 50°C, maximum, watts	150	150	150	150	150	150	150

Electrical Specifications, BASTA

	698–806	790–894	890–960	1695–1995	1920–2300	2300–2500	2490–2690
Frequency Band, MHz	698–806	790–894	890–960	1695–1995	1920–2300	2300–2500	2490–2690
Gain by all Beam Tilts, average, dBi	11.3	11.6	12	14.4	15.4	15.9	16.2
Gain by all Beam Tilts Tolerance, dB	±0.5	±0.5	±0.6	±1.1	±0.8	±0.4	±0.5
Beamwidth, Horizontal Tolerance, degrees	±9	±7	±7	±8	±7	±7	±4

RRV4-65M-R6N43

Beamwidth, Vertical Tolerance, degrees	±2.6	±1.9	±1.5	±0.9	±0.8	±0.4	±0.5
USLS, beampeak to 20° above beampeak, dB				15	15	15	15
CPR at Sector, dB	7	7	7	9	8	6	4

Mechanical Specifications

BASTA Version, mechanical	BASTA v12
Wind Loading @ Velocity, frontal	225.0 N @ 150 km/h (50.6 lbf @ 150 km/h)
Wind Loading @ Velocity, lateral	108.0 N @ 150 km/h (24.3 lbf @ 150 km/h)
Wind Loading @ Velocity, maximum	338.0 N @ 150 km/h (76.0 lbf @ 150 km/h)
Wind Loading @ Velocity, rear	144.0 N @ 150 km/h (32.4 lbf @ 150 km/h)
Wind Speed, maximum	241 km/h (150 mph)

Packaging and Weights

Width, packed	530 mm 20.866 in
Depth, packed	349 mm 13.74 in
Length, packed	1165 mm 45.866 in
Weight, gross	32.5 kg 71.65 lb

Regulatory Compliance/Certifications

Agency	Classification
CHINA-ROHS	Above maximum concentration value
ISO 9001:2015	Designed, manufactured and/or distributed under this quality management system
ROHS	Compliant/Exempted
UK-ROHS	Compliant/Exempted



Included Products

BSAMNT-3	-	Wide Profile Antenna Downtilt Mounting Kit for 2.4 - 4.5 in (60 - 115 mm) OD round members. Kit contains one scissor top bracket set and one bottom bracket set. Mount Kit Weight is 6.2kg 13.7 lb.
----------	---	---

* Footnotes

Performance Note	Severe environmental conditions may degrade optimum performance
-------------------------	---

BSAMNT-3



Wide Profile Antenna Downtilt Mounting Kit for 2.4 - 4.5 in (60 - 115 mm) OD round members. Kit contains one scissor top bracket set and one bottom bracket set. Mount Kit Weight is 6.2kg | 13.7 lb.

Product Classification

Product Type Downtilt mounting kit

General Specifications

Application Outdoor

Color Silver

Dimensions

Compatible Diameter, maximum 115 mm | 4.528 in

Compatible Diameter, minimum 60 mm | 2.362 in

Weight, net 6.2 kg | 13.669 lb

Material Specifications

Material Type Galvanized steel

Packaging and Weights

Included Brackets | Hardware

Packaging quantity 1

Weight, gross 6.4 kg | 14.11 lb

Regulatory Compliance/Certifications

Agency	Classification
CE	Compliant with the relevant CE product directives
CHINA-ROHS	Below maximum concentration value
ISO 9001:2015	Designed, manufactured and/or distributed under this quality management system
ROHS	Compliant
UK-ROHS	Compliant



BSAMNT-3

