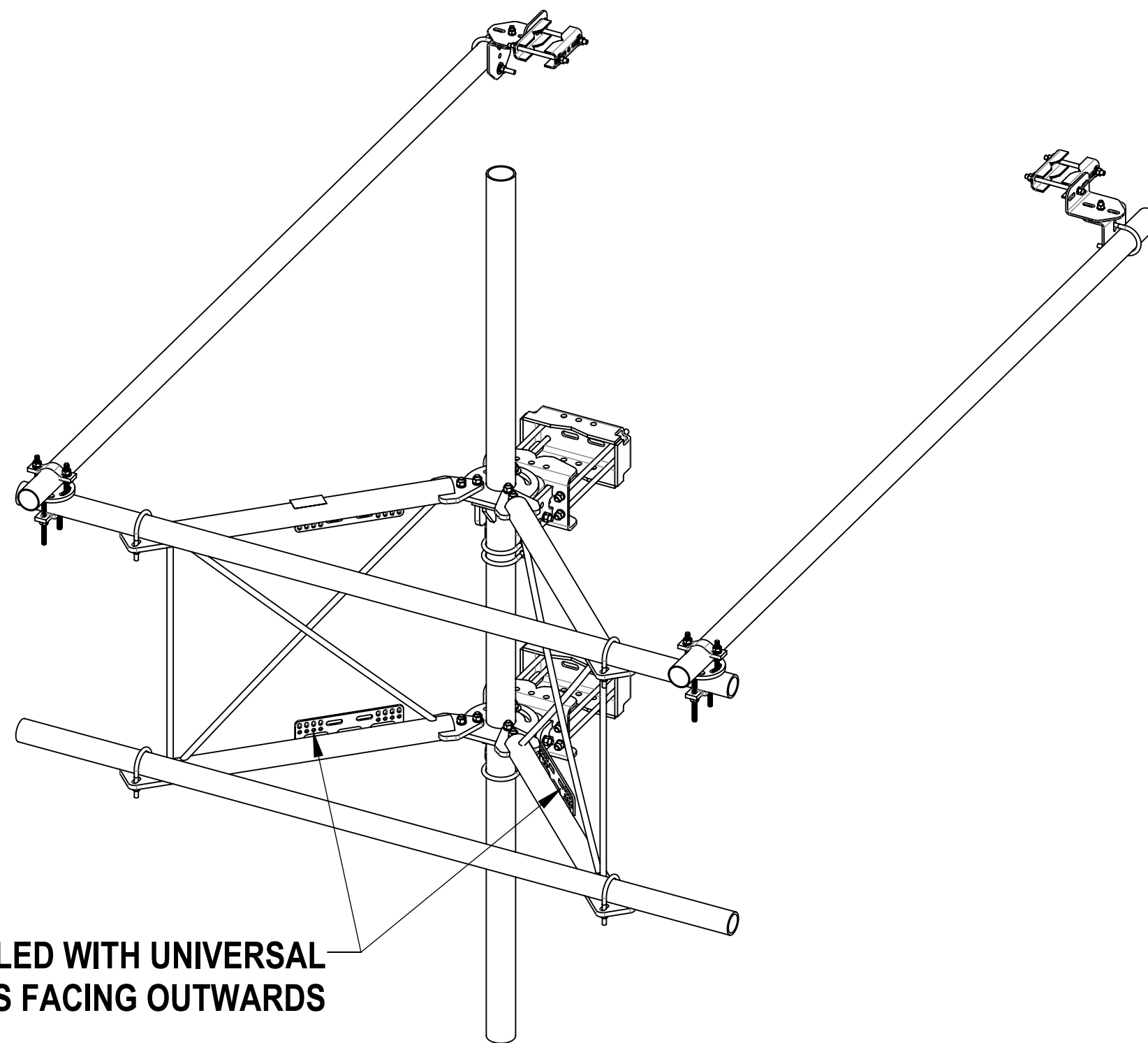



- 1.0 GENERAL NOTES  
 1.1 ALL METRIC DIMENSIONS ARE IN BRACKETS [X. X]  
 1.2 FOR PATENT INFO: <https://www.adwpat.com>
- 2.0 DESIGN NOTES  
 2.1 ANY HAZARDS OR OBSTRUCTIONS TO THE CLIMBING FACILITY AND SAFETY CLIMB MUST BE IDENTIFIED PRIOR TO INSTALLING THE APPURTENANCE. ADDITIONAL PRODUCTS MAY BE REQUIRED TO MAINTAIN THE INTEGRITY OF THE SAFETY CLIMB. DURING INSTALLATION, TEMPORARY AND/OR PERMANENT PRECAUTIONARY MEASURES SHOULD BE TAKEN TO PRESERVE THE CLIMBING FACILITY AND/OR SAFETY CLIMB.  
 2.2 UP TO 5.0° TAPER AVAILABLE ON MODELS THAT SUPPORT ADJUSTMENT
- 3.0 MANUFACTURING/SPECIAL REQUIREMENTS  
 3.1 TIGHTEN ALL BOLTS SECURING FLAT PLATES BY THE TURN-OF-NUT METHOD. TIGHTEN ALL U-BOLTS USING TURN-OF-NUT METHOD WITH ATTENTION TO LEAVE EQUAL DISTANCE AND EQUAL FORCE ON EACH LEG OF THE U-BOLT.
- 4.0 TEST
- 5.0 PACKAGING  
 5.1 PACKAGING SHALL MEET ANDREW REQUIREMENTS PER DOCUMENT IS-PL-3005.  
 5.2 PRINTED DOCUMENT TO BE PLACED INSIDE POLYBAG AND THEN IN SHIPPING CONTAINER.  
 5.3 EXTRA HARDWARE MAY BE SUPPLIED, BAGGED AND SHIPPED.


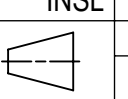
REVISIONS			
REV.	DESCRIPTION	DATE	APPROVED
A	INITIAL RELEASE	YH1102 29JUN22	MM1298 40141891CMO
B	PALLET CHANGED FROM SFG2CPALLET TO 62X38PALLET, REMOVED SFG2350	YH1102 17NOV22	MM1298 40157021CMO
C	CHG QTY SFG2386 TO 1 EA, AND GUB-4355 TO 3 EA; ADDED SFG2397-00; ADDED SFG2398 TO THE TOP OF V-ARM	RY1002 09OCT23	YW1045 40179941CMO
D	UPDATED SFG23175 TO ADD UNIVERSAL INTERFACE PLATES	RY1002 02SEP24	XK1001 40202713CMO



**SHOULD BE INSTALLED WITH UNIVERSAL  
 INTERFACE PLATES FACING OUTWARDS**

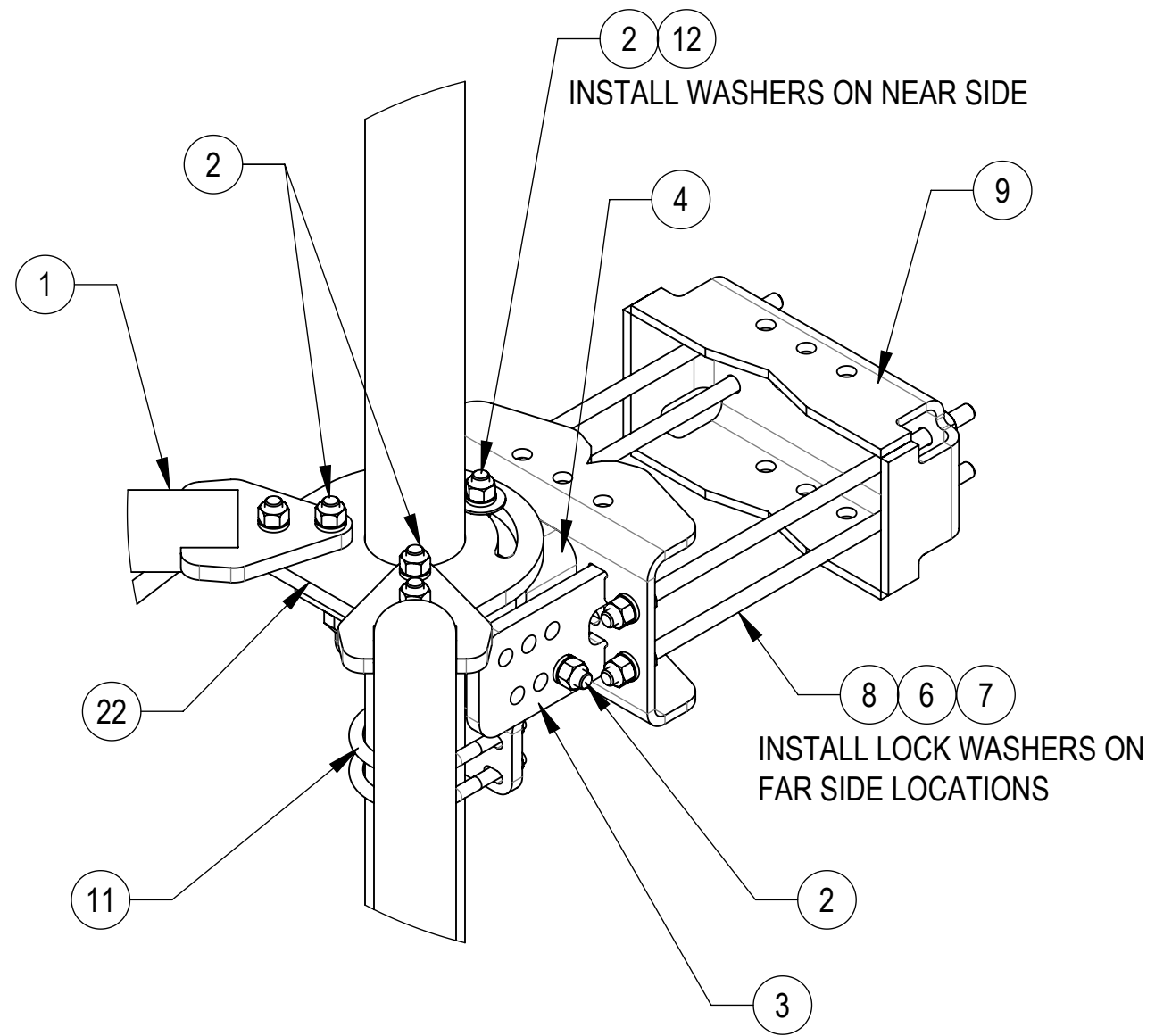


**ANDREW**® an Amphenol company

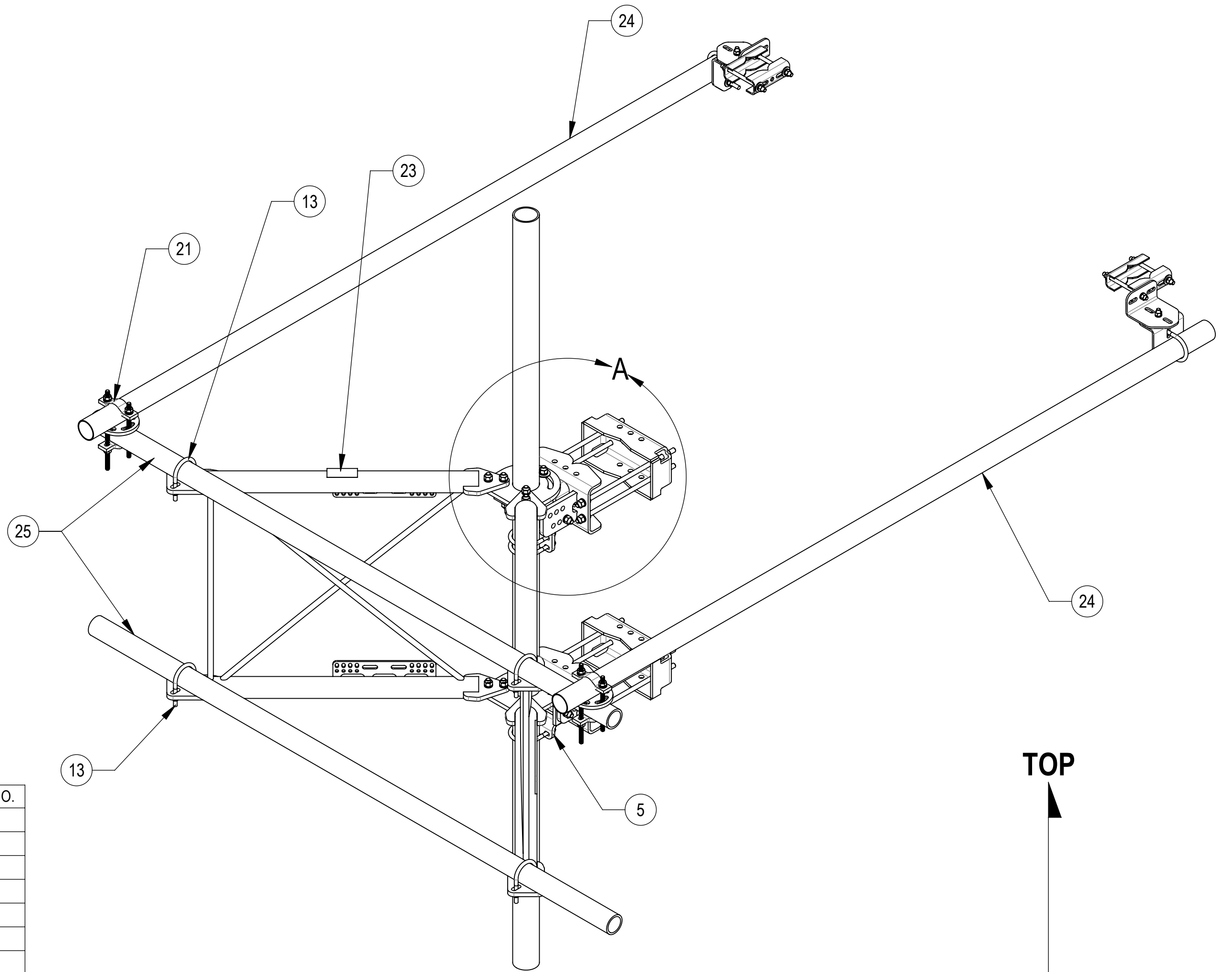
TOLERANCES		SAP MATERIAL MASTER					
0 PLACE X[X] ± 0.2[5]	2 PLACE .XX[X] ± 0.06[1.5]	<b>SFG23RHDX-8-B</b>					
1 PLACE .X[X] ± 0.12[3.0]	ANGLES ± 2°						
FINISH		MATERIAL					
UNLESS OTHERWISE SPECIFIED DIMENSIONS ARE IN INCHES INTERPRET PER ANSI Y 14.5M-1994		NAME	DATE	<b>G23 SF 10' SPINE, 8' FACE, BASE KIT</b>			
		CE YH1102	6/29/2022				
		RW YX1027	06/11/2025				
		AD YMENG	06/12/2025				
RE YMENG	06/12/2025	SCALE DOCUMENT NO.					
ECN 40202713CMO		<b>1:16 SFG23RHDX-8-B</b>					
SIZE	Auth Group INSL	MODEL		DRAWING		SHEET 1 OF 5	
C	 	VERSION	STATUS	REVISION	VERSION		STATUS
		03	RE	D	03	RE	D

DENSITY		lbs/in³
MASS	580.29	lbs
VOLUME	2048.09	in³
SURFACE AREA	17803.29	in²
HEIGHT	120.0"	
LENGTH	96.0"	
WIDTH	120.0"	

Confidential



**DETAIL A**  
SCALE 1 : 6



**TOP**

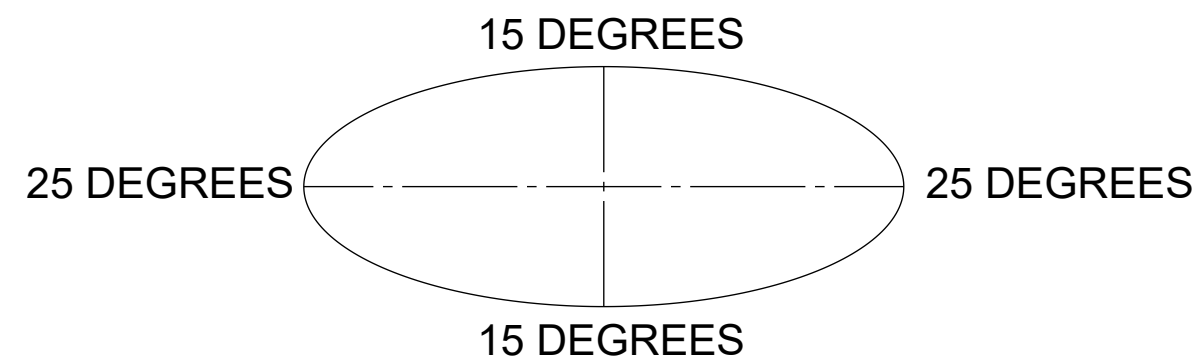
**BOTTOM**

**COMPONENT PART NUMBERS PROVIDED FOR ASSEMBLY PURPOSES;  
INDIVIDUAL COMPONENTS MAY BE SHIPPED AS PARTS WITHIN AN INCLUDED KIT.**

ITEM	PART NO.	DESCRIPTION	QTY.	WEIGHT	NOTE NO.
1	SFG23175	ARM STANDOFF SFG23	2	66.61 LBS	
2	GB-05225	5/8" X 2-1/4" GALV BOLT KIT	14	0.28 LBS	
3	SFG2380	WELDMENT, HD, TOP TAPER BRACKET	1	22.78 LBS	
4	SFG2386	WELDMENT, SFG2 AZIMUTH BRACKET	1	10.07 LBS	
5	SFG2397-00	WELDMENT, G23 AZIMUTH BRACKET	1	7.94 LBS	
6	GN-05	5/8" GALV HEX NUT	24	0.08 LBS	
7	GWL-05	5/8" GALV LOCK WASHER	16	0.03 LBS	
8	MT-382-18	5/8" X 18" THREADED ROD	8	1.43 LBS	
9	SFG2289	G2 RRU BACK CLAMP, HD	2	18.65 LBS	
10	SFG2381	WELDMENT, HD, LOWER TOWER LEG BRACKET	1	17.42 LBS	
11	GUB-4355	1/2" X 3-5/8" X 5" GALV U-BOLT	3	0.71 LBS	
12	GWF-05	5/8" GALV FLAT WASHER, 1.7OD	2	0.06 LBS	
13	GUB-4352	1/2" X 3" X 5-1/4" GALV U-BOLT	6	0.71 LBS	
14	SAB01	FORMED CLAMP	4	1.35 LBS	
15	MT-379-8	1/2" X 8" GALV THREADED ROD	4	0.45 LBS	
16	XAU01	ANGLE, CROSSOVER, 1.9-3.5" X 1.9-3.5" OD	4	2.98 LBS	
17	GB-04145	1/2" X 1-1/2" GALV BOLT KIT	2	0.13 LBS	
18	GWF-04	1/2" GALV FLAT WASHER	8	0.04 LBS	
19	GWL-04	1/2" GALV LOCK WASHER	10	0.01 LBS	
20	GN-04	1/2" GALV HEX NUT	10	0.04 LBS	
21	XP-R	CROSSOVER PLATE, ROUND, UP TO 3.5" OD	2	6.20 LBS	
22	SFG2204	WELDMENT, BACK VERTICAL ARM MOUNT	1	97.29 LBS	
23	SFG2398	LABEL, SFG23RHDX	1	0.04 LBS	
24	MT546120120	PIPE, 2.875"OD X 120"	2	35.44 LBS	
25	MT546096276	2-7/8" O.D. X 96" PIPE	2	61.51 LBS	

**ALLOWABLE TIEBACK ANGLE**

± 15 DEGREES VERTICAL  
± 25 DEGREES HORIZONTAL



TITLE  
**G23 SF 10' SPINE, 8' FACE, BASE KIT**

SIZE **C** SCALE **1:12** DOCUMENT NO. **SFG23RHDX-8-B**

DRAWING			SHEET 2 OF 5
VERSION	STATUS	REVISION	
03	RE	D	

Confidential

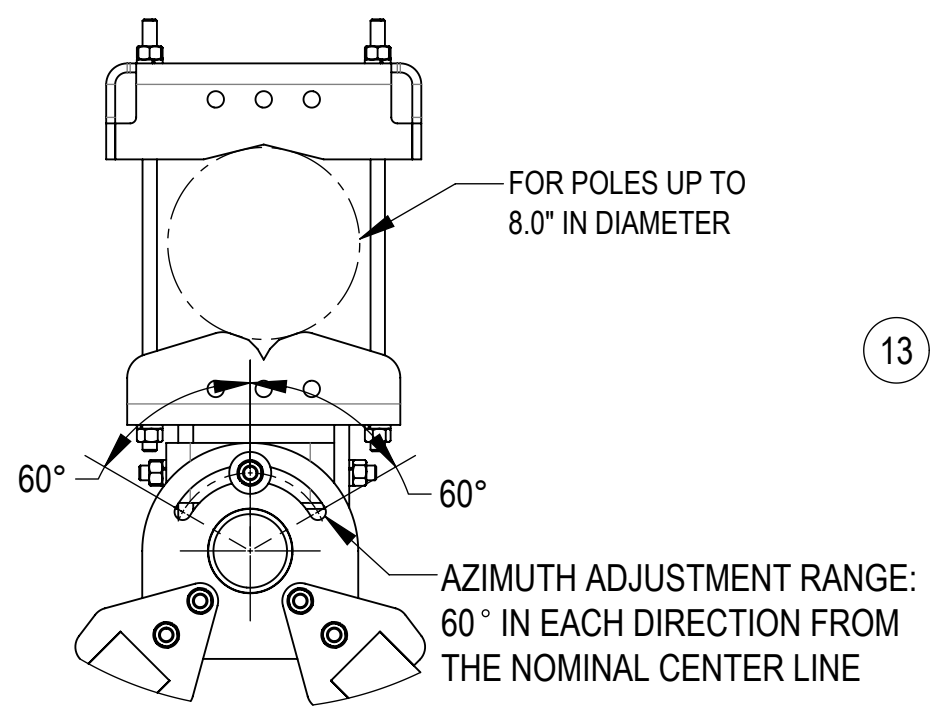
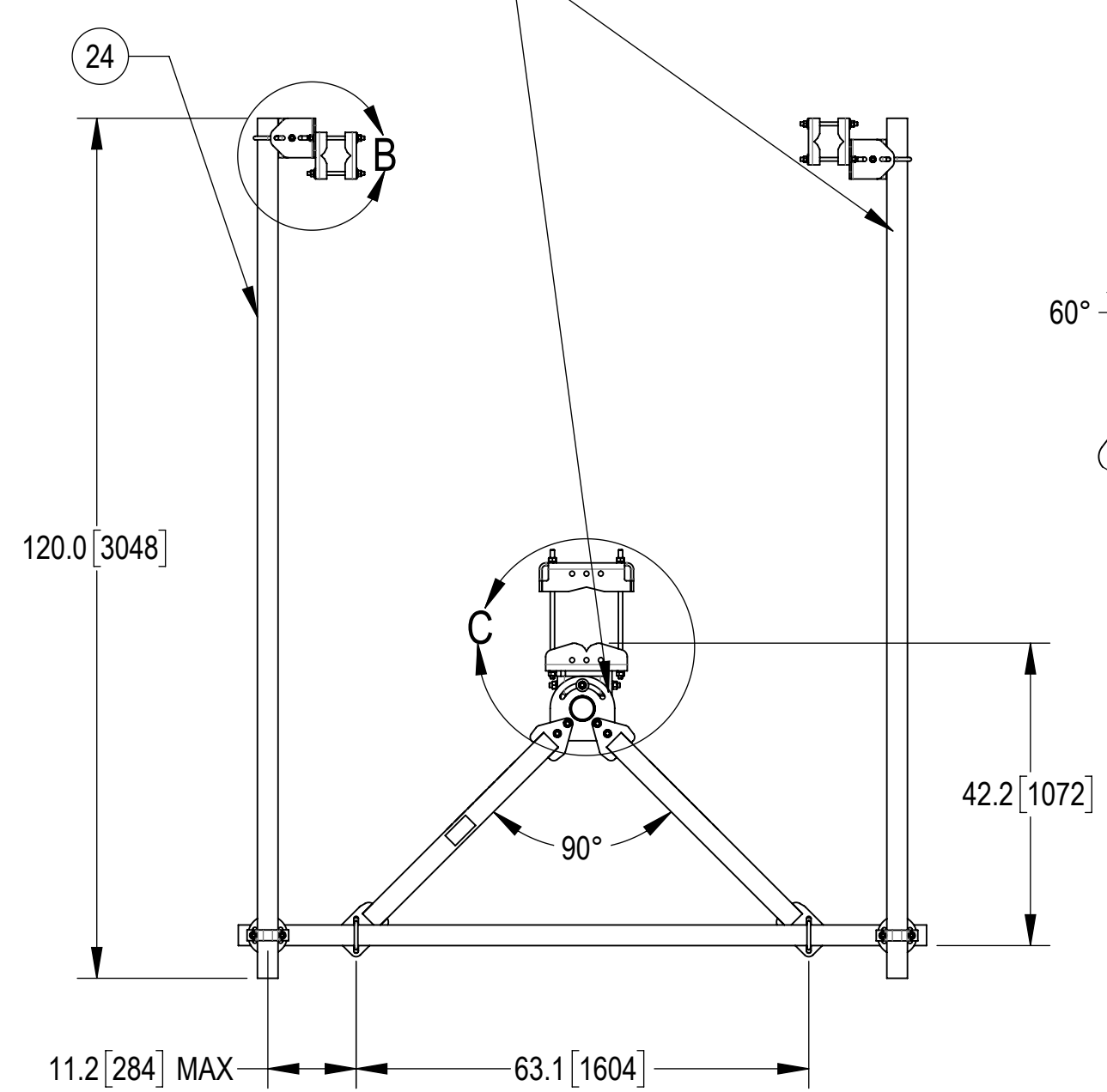
4

3

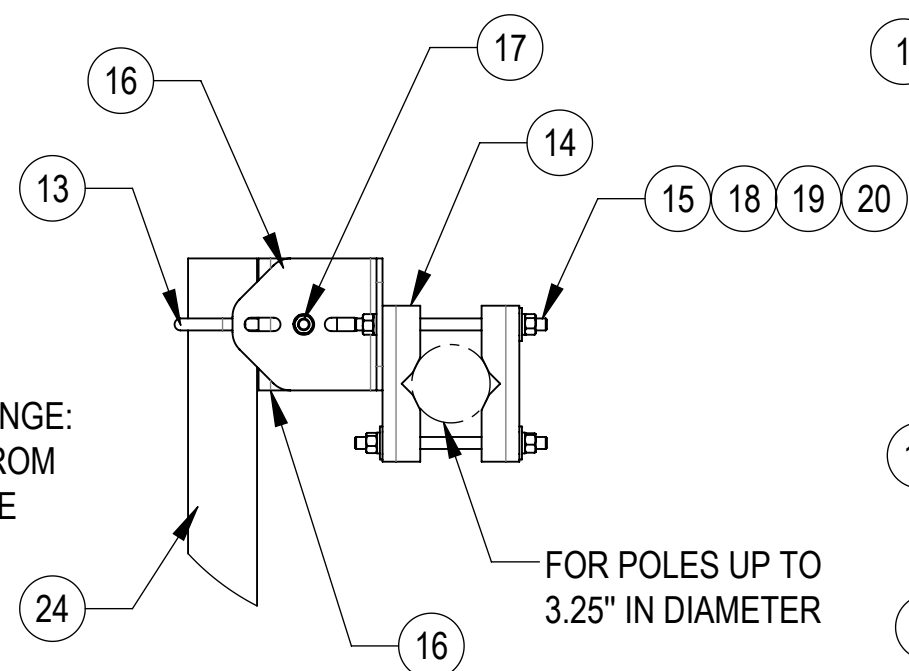
2

1

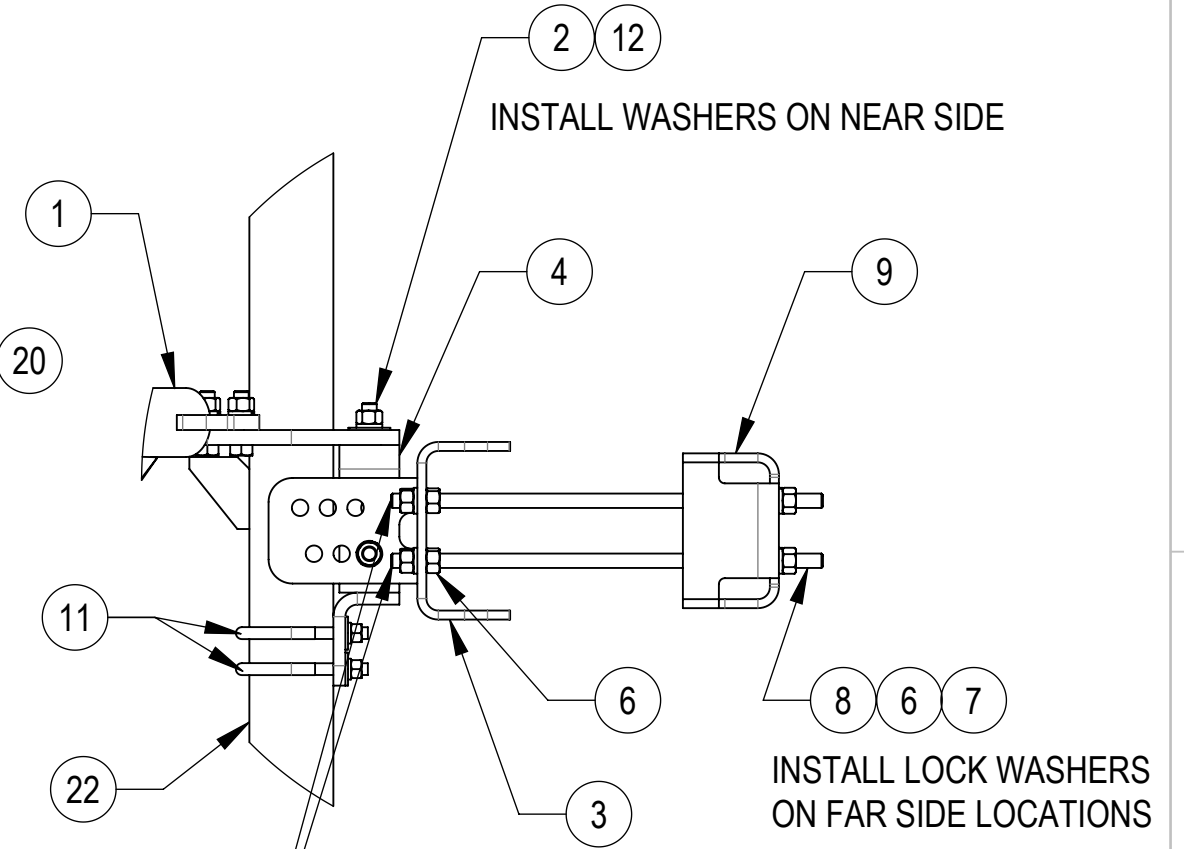
TIEBACK MUST BE CONNECTED TO A RIGID MEMBER THAT PROVIDES ADEQUATE SUPPORT WITHIN THE LIMITS NOTED IN THE TIEBACK ANGLE RANGE DETAIL. UNLESS APPROVED BY ENGINEER OF RECORD, SPINE STEM OF NEIGHBORING MOUNT IS ACCEPTABLE.



**DETAIL C**  
SCALE 1 : 8

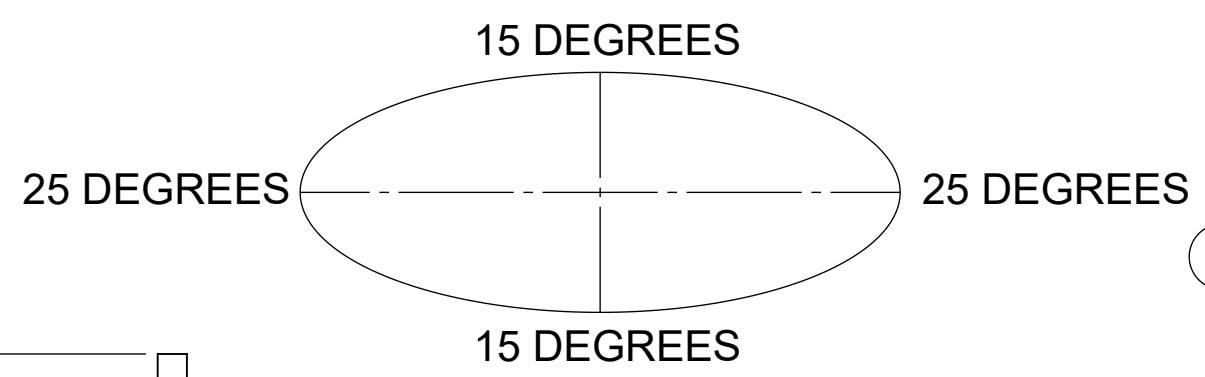


**DETAIL B**  
SCALE 1 : 8

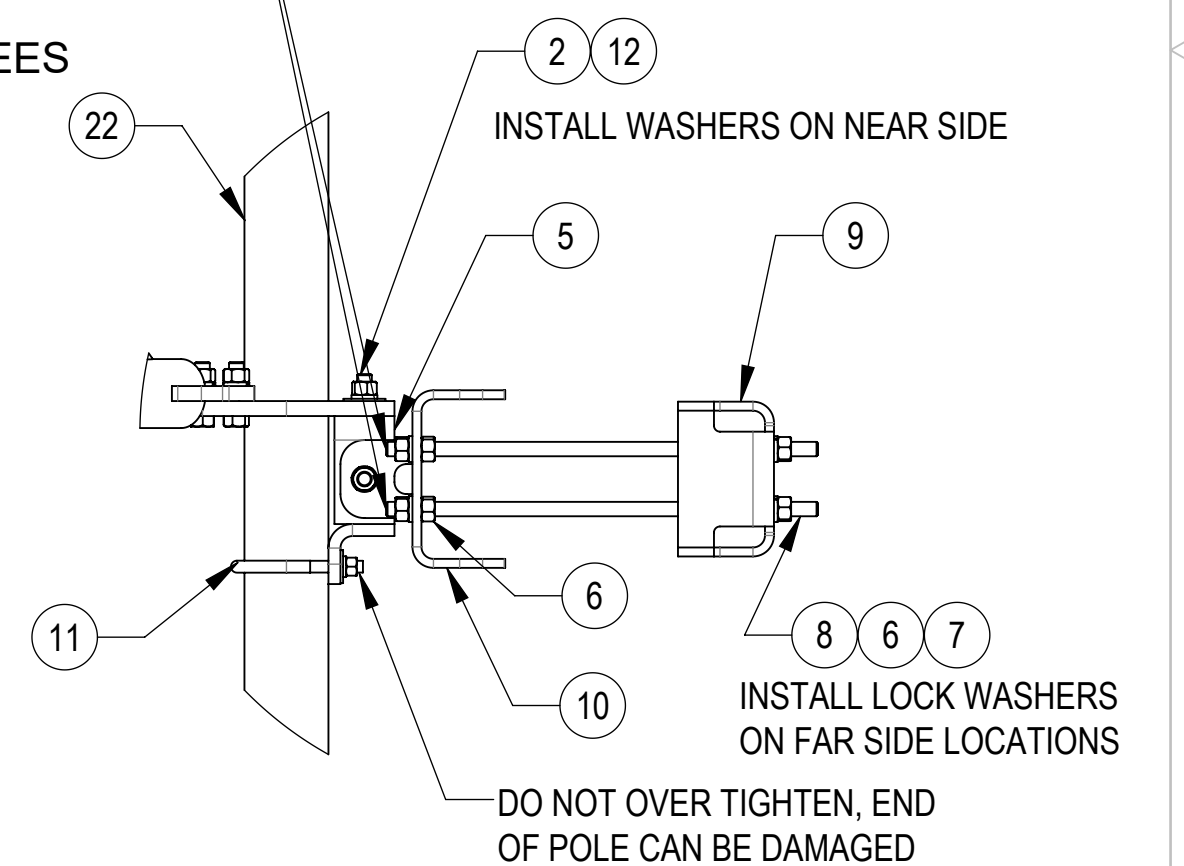


**DETAIL D**  
SCALE 1 : 8

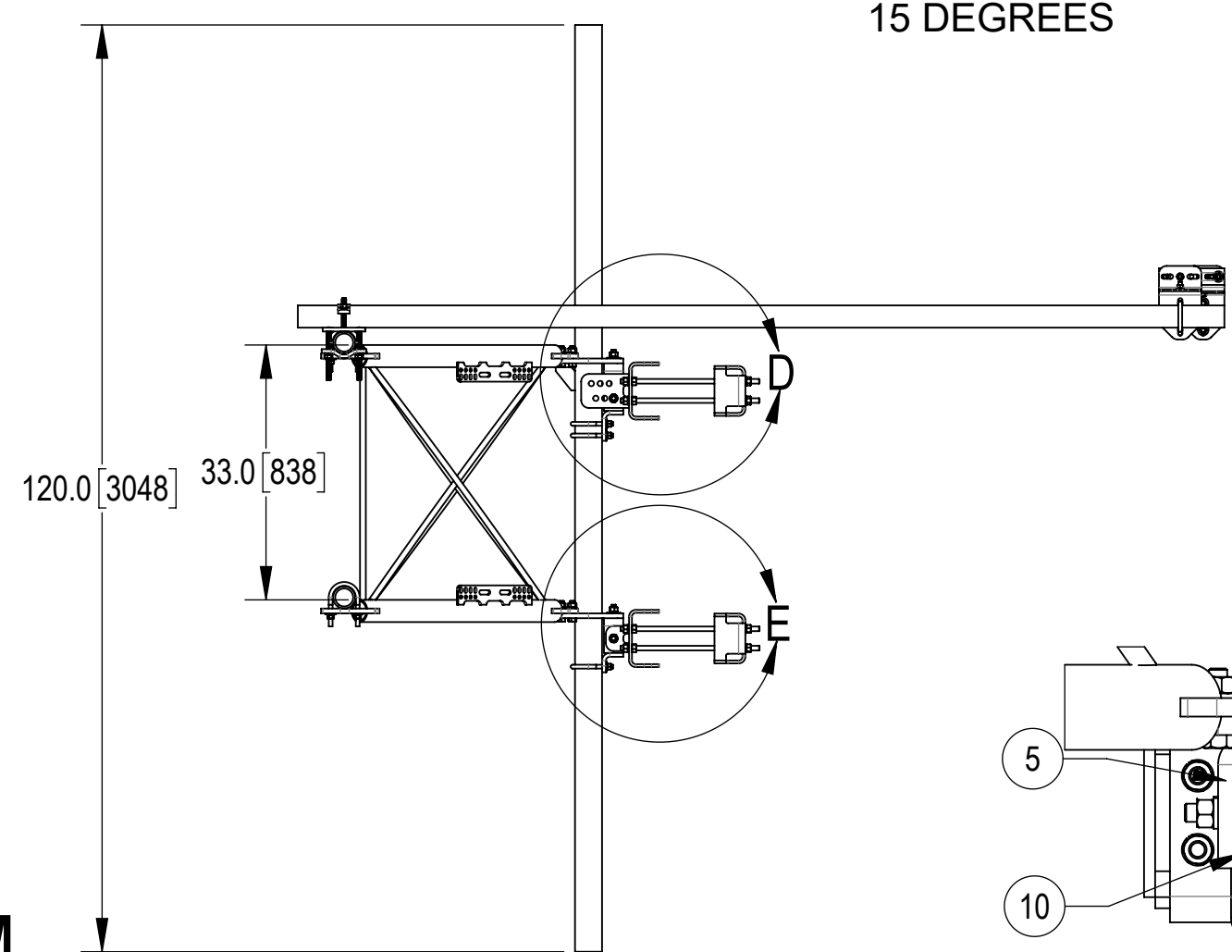
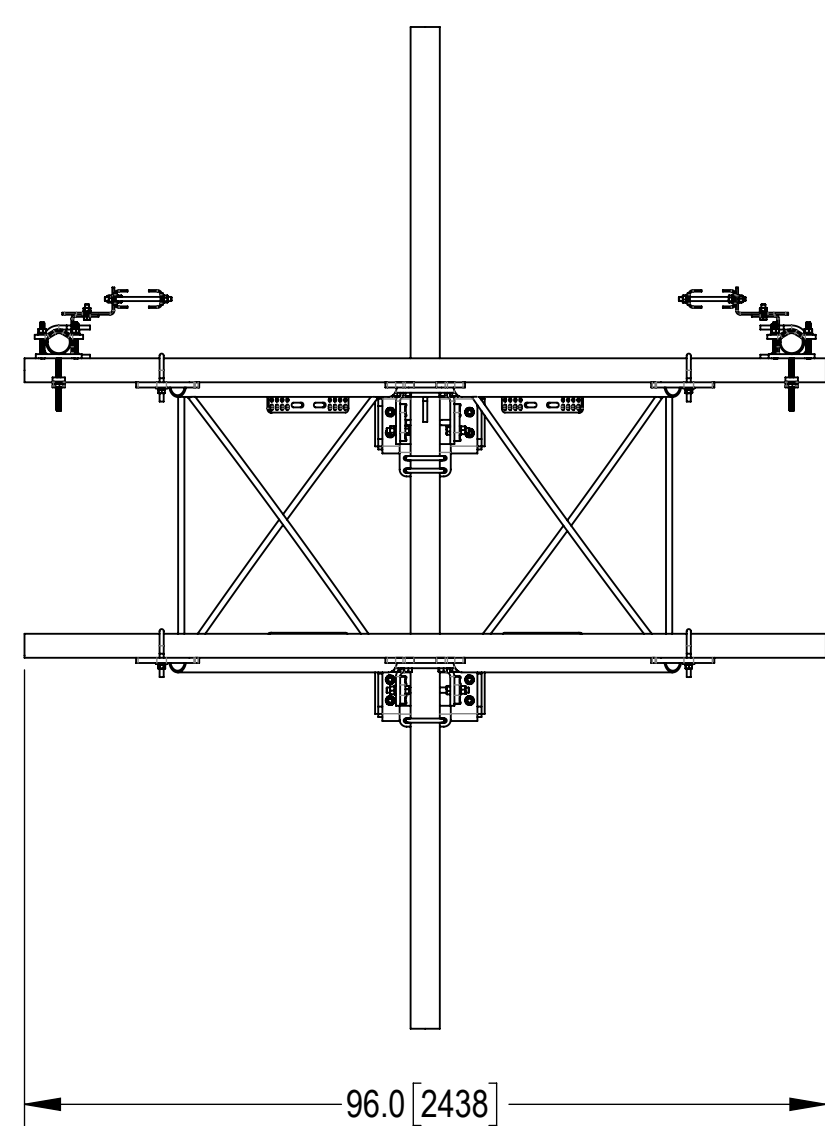
**ALLOWABLE TIEBACK ANGLE**  
+15 DEGREES VERTICAL  
±25 DEGREES HORIZONTAL



THE THREADED ROD CAN ONLY EXPOSE 4 TO 7 THREADS ON ONE SIDE OF THE BRACKET, WHICH IS TO PREVENT INTERFERENCE WITH THE SIDE BOLTS



**DETAIL E**  
SCALE 1 : 8



**DETAIL ISO BOTTOM ROTATED CROP VIEW**  
SCALE 1 : 6

**ANDREW** an Amphenol company

TITLE				
G23 SF 10' SPINE, 8' FACE, BASE KIT				
SIZE	SCALE	DOCUMENT NO.		
<b>C</b>	<b>1:25</b>	SFG23RHDX-8-B		
		DRAWING		
		VERSION	STATUS	REVISION
		03	RE	D
				SHEET
				3 OF 5

Confidential

4

3

2

1

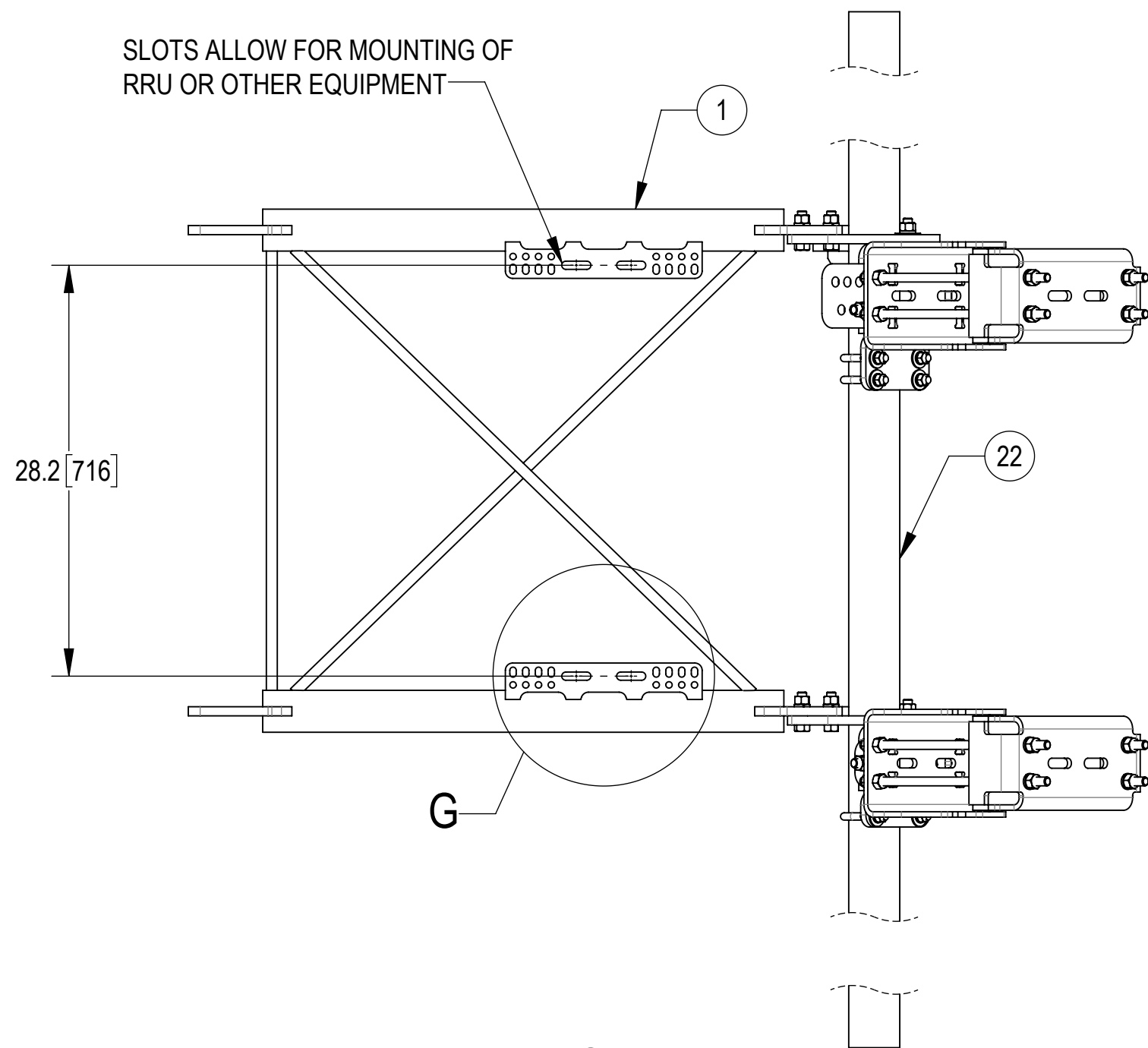
4

3

2

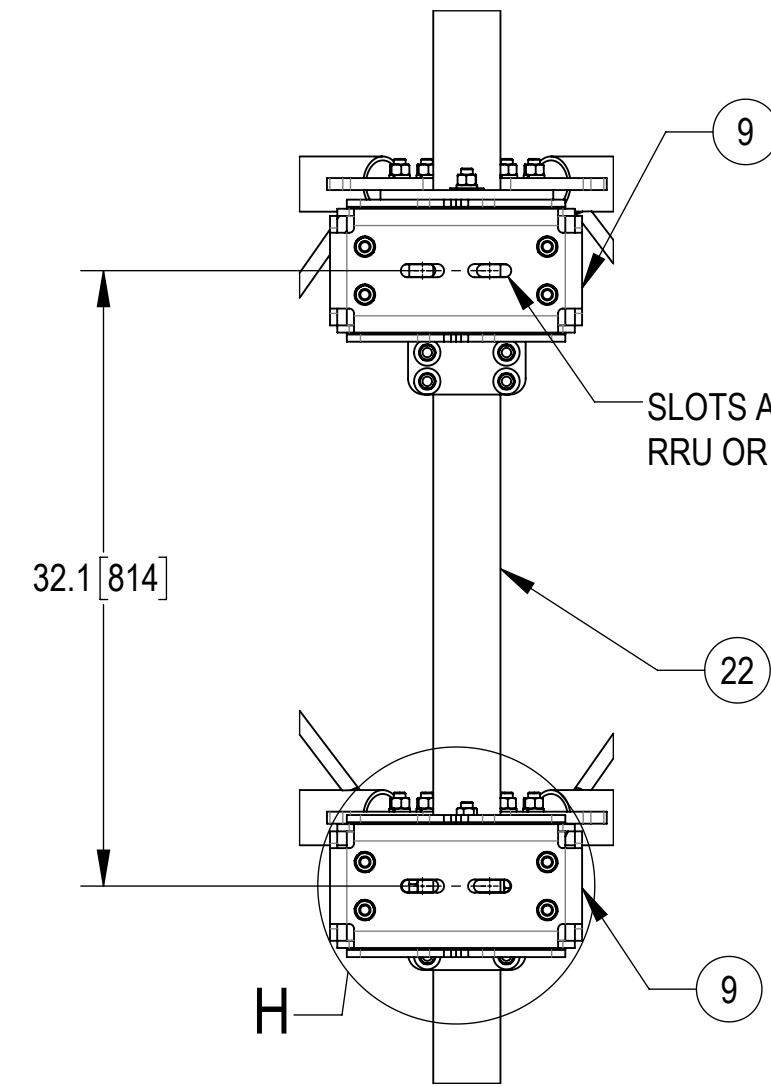
1

SLOTS ALLOW FOR MOUNTING OF RRU OR OTHER EQUIPMENT

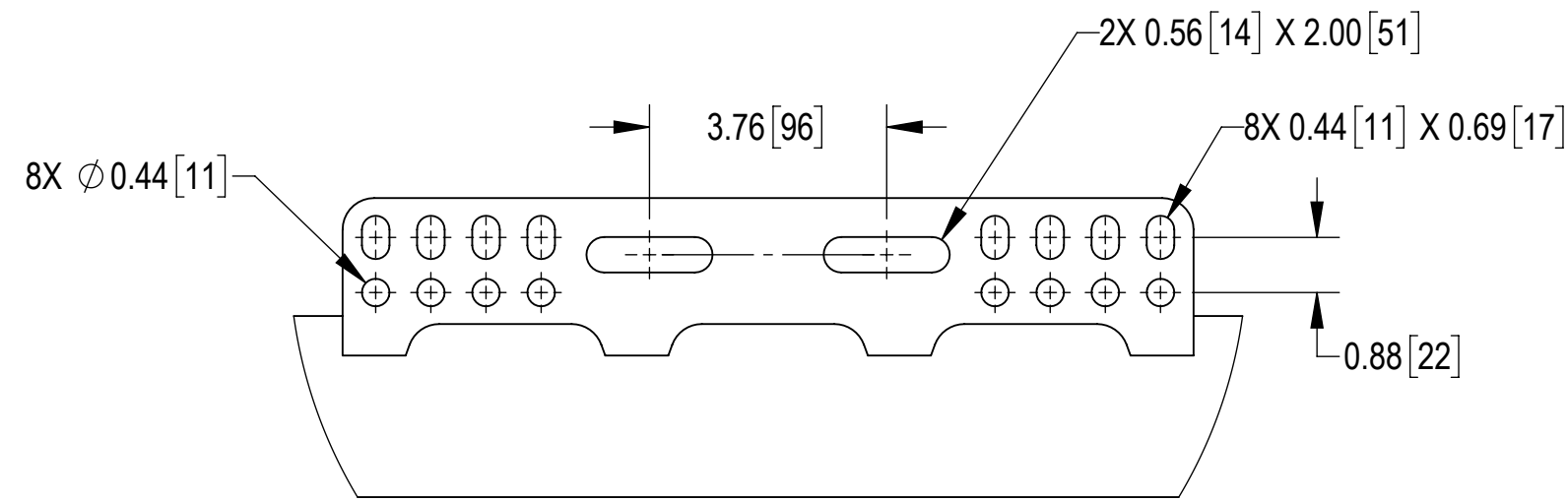


**SIDE VIEW**

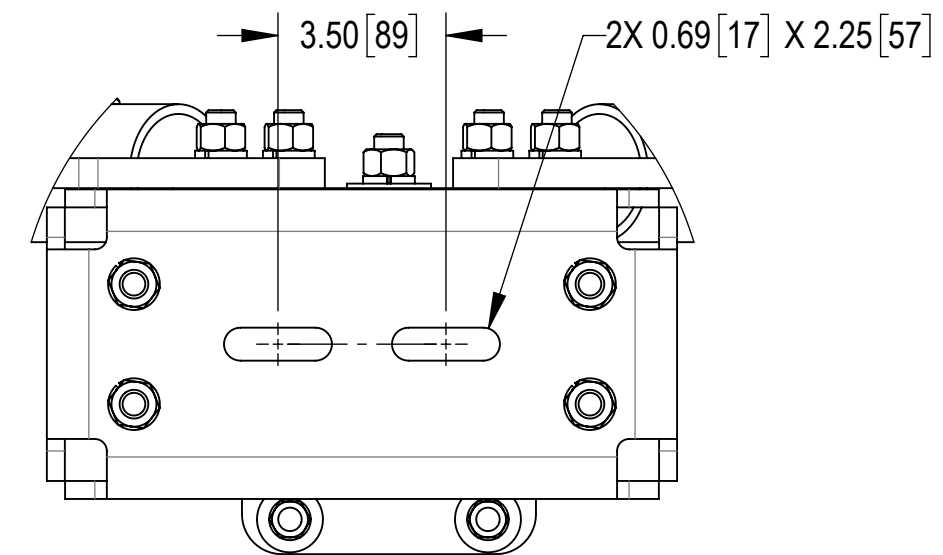
SLOTS ALLOW FOR MOUNTING OF RRU OR OTHER EQUIPMENT



**BACK CROP VIEW**



**DETAIL G**  
SCALE 1 : 3



**DETAIL H**  
SCALE 1 : 4

**ANDREW** an Amphenol company

TITLE  
G23 SF 10' SPINE, 8' FACE, BASE KIT

SIZE <b>C</b>	SCALE <b>1:10</b>	DOCUMENT NO. SFG23RHDX-8-B
------------------	----------------------	-------------------------------

DRAWING	VERSION	STATUS	REVISION	SHEET 4 OF 5
	03	RE	D	

Confidential

4

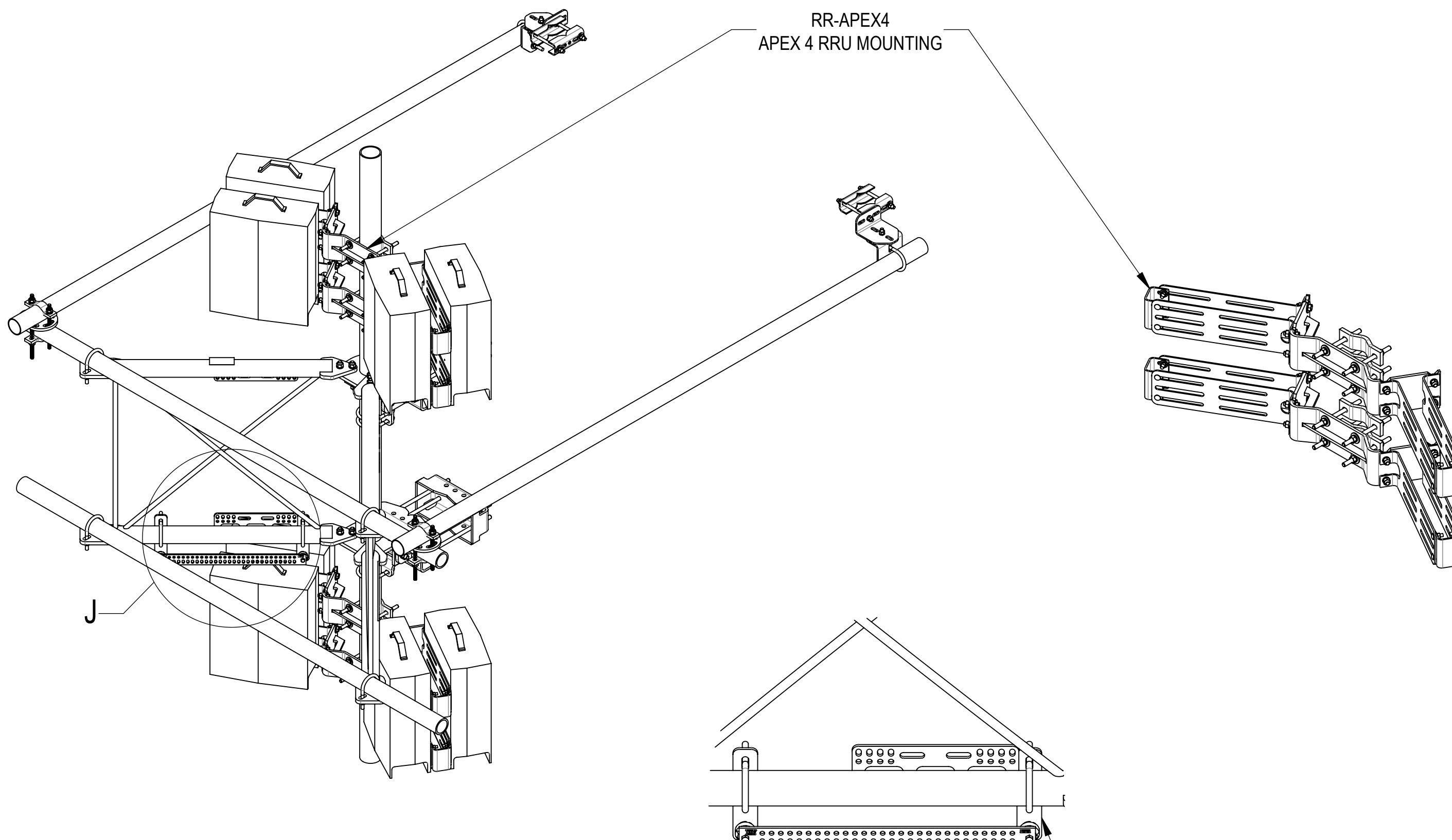
3

2

1

NOT ALL MATERIALS ARE INCLUDED WITH  
ITEMS SHOWN ON THIS PAGE  
SEE RESPECTIVE PART NUMBER DRAWING  
BOM FOR DETAILS

# ACCESSORIES ORDERED SEPARATELY:



**DETAIL J**  
SCALE 1 : 8

GBSF278



TITLE				
G23 SF 10' SPINE, 8' FACE, BASE KIT				
SIZE	SCALE	DOCUMENT NO.		
<b>C</b>	<b>1:16</b>	SFG23RHDX-8-B		
		DRAWING		
		VERSION	STATUS	REVISION
		03	RE	D
				SHEET
				5 OF 5

Confidential

