

V4SS-360S-HG-F2



12-port small cell antenna, 8x 1695–2690, 4x 3300–4000, 360° Horizontal Beamwidth, fixed tilt.

- Antenna optimized for higher gain with superior radiation efficiency
- Powered by Andrew's SEED® technology (Sustainable Energy Efficient Design)

General Specifications

Antenna Type	Small Cell
Band	Multiband
Color	Light Gray (RAL 7035)
Grounding Type	RF connector inner conductor and body grounded to reflector and mounting bracket
Performance Note	Outdoor usage
RF Connector Interface	4.3-10 Female
RF Connector Location	Bottom
RF Connector Quantity, high band	4
RF Connector Quantity, mid band	8
RF Connector Quantity, total	12

Dimensions

Width	370 mm 14.567 in
Depth	370 mm 14.567 in
Length	610 mm 24.016 in
Net Weight, without mounting kit	13.7 kg 30.203 lb

Port Configuration

V4SS-360S-HG-F2



Electrical Specifications

Impedance	50 ohm
Operating Frequency Band	1695 – 2690 MHz 3300 – 4000 MHz
Polarization	±45°
Total Input Power, maximum	640 W

Electrical Specifications

	Y1,Y2,Y3,Y4	Y1,Y2,Y3,Y4	Y1,Y2,Y3,Y4	P1,P2	P1,P2	P1,P2
Frequency Band, MHz	1695–1920	1920–2200	2300–2690	3300–3550	3550–3700	3700–4000
RF Port	1-8	1-8	1-8	9-12	9-12	9-12
Gain, Maximum, dBi	11.8	11.9	12	11	11.9	12
Gain, dBi	10.9	11	10.8	10.6	11.3	11.6
Beamwidth, Horizontal, degrees	360	360	360	360	360	360
Beamwidth, Vertical, degrees	14.7	13.3	11.3	9.1	8.6	8
Beam Tilt, degrees	2	2	2	2	2	2
USLS (First Lobe), dB	11	11	11	11	11	11
Isolation, Cross Polarization, dB	25	25	25	25	25	25
Isolation, Inter-band, dB	25	25	25	25	25	25
VSWR Return loss, dB	1.5 14.0	1.5 14.0	1.5 14.0	1.5 14.0	1.5 14.0	1.5 14.0

V4SS-360S-HG-F2

PIM, 3rd Order, 2 x 20 W, dBc	-153	-153	-153	-145	-145	-145
Input Power per Port, maximum, watts	150	150	150	100	100	100

Mechanical Specifications

Wind Loading @ Velocity, frontal	129.0 N @ 150 km/h (29.0 lbf @ 150 km/h)
Wind Loading @ Velocity, lateral	129.0 N @ 150 km/h (29.0 lbf @ 150 km/h)
Wind Loading @ Velocity, maximum	129.0 N @ 150 km/h (29.0 lbf @ 150 km/h)
Wind Loading @ Velocity, rear	129.0 N @ 150 km/h (29.0 lbf @ 150 km/h)
Wind Speed, maximum	241 km/h (150 mph)

Packaging and Weights

Width, packed	478 mm 18.819 in
Depth, packed	464 mm 18.268 in
Length, packed	894 mm 35.197 in
Weight, gross	17.4 kg 38.36 lb

Regulatory Compliance/Certifications

Agency	Classification
CHINA-ROHS	Below maximum concentration value
ISO 9001:2015	Designed, manufactured and/or distributed under this quality management system
REACH-SVHC	Compliant as per SVHC revision on www.andrew.com/ProductCompliance
ROHS	Compliant
UK-ROHS	Compliant



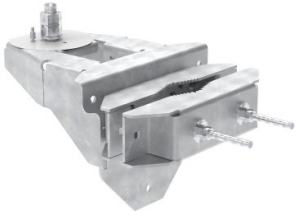
Related Products

MC-MNT-SIDE-370	-	Mounting systems for cylindrical pipe installations (50-250mm pipe diameter) .Suitable for small cell cylindrical antennas with a weight less than 20KG and dimensions less than diameter*height: 370*610mm.
MC-MNT-TOP-370	-	Heavyweight Small Cell mounting kit with shroud. Capability of mounting round antenna types on the top of a pole. For installations of 14.6 inch canister small cell antennas on top of poles with diameter from 165 to 216mm (6.5" to 8.5")

* Footnotes

Performance Note	Severe environmental conditions may degrade optimum performance
-------------------------	---

MC-MNT-SIDE-370



Mounting systems for cylindrical pipe installations (50-250mm pipe diameter) .Suitable for small cell cylindrical antennas with a weight less than 20KG and dimensions less than diameter*height: 370*610mm.

Product Classification

Product Type Side mounting kit

General Specifications

Application Outdoor

Color Silver

Dimensions

Compatible Diameter, maximum 250 mm | 9.843 in

Compatible Diameter, minimum 50 mm | 1.969 in

Weight, net 15 kg | 33.069 lb

Material Specifications

Material Type Galvanized steel

Packaging and Weights

Included Brackets | Hardware

Packaging quantity 1

Weight, gross 20 kg | 44.092 lb

MC-MNT-TOP-370



Heavyweight Small Cell mounting kit with shroud. Capability of mounting round antenna types on the top of a pole. For installations of 14.6 inch canister small cell antennas on top of poles with diameter from 165 to 216mm (6.5" to 8.5")

Product Classification

Product Type Pole mount kit

General Specifications

Application Outdoor

Color Silver

Dimensions

Compatible Diameter, maximum 216 mm | 8.504 in

Compatible Diameter, minimum 165 mm | 6.496 in

Weight, net 11.2 kg | 24.692 lb

Material Specifications

Material Type Galvanized steel

Packaging and Weights

Included Brackets | Hardware

Weight, gross 16.2 kg | 35.715 lb

Regulatory Compliance/Certifications

Agency

CHINA-ROHS

REACH-SVHC

ROHS

UK-ROHS

Classification

Below maximum concentration value

Compliant as per SVHC revision on www.andrew.com/ProductCompliance

Compliant

Compliant

