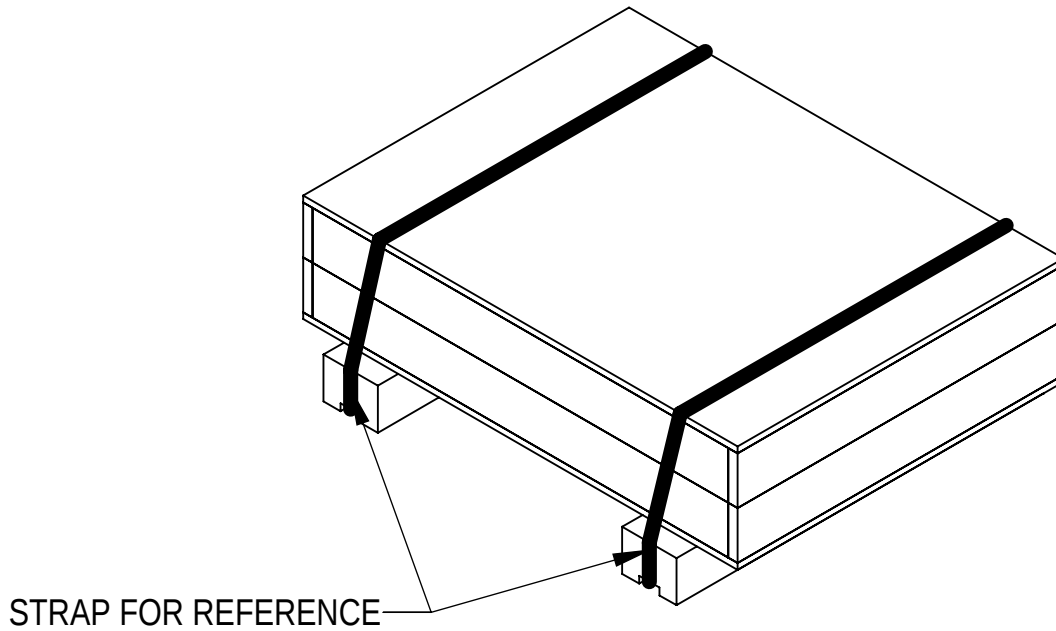


- 1.0 GENERAL NOTES
- 1.1 ALL METRIC DIMENSIONS ARE IN BRACKETS [X. X]
- 1.2 FOR PATENT INFO: <https://www.adwpat.com>
- 2.0 DESIGN NOTES

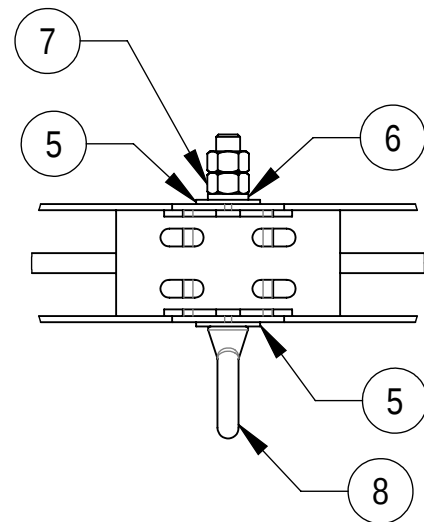
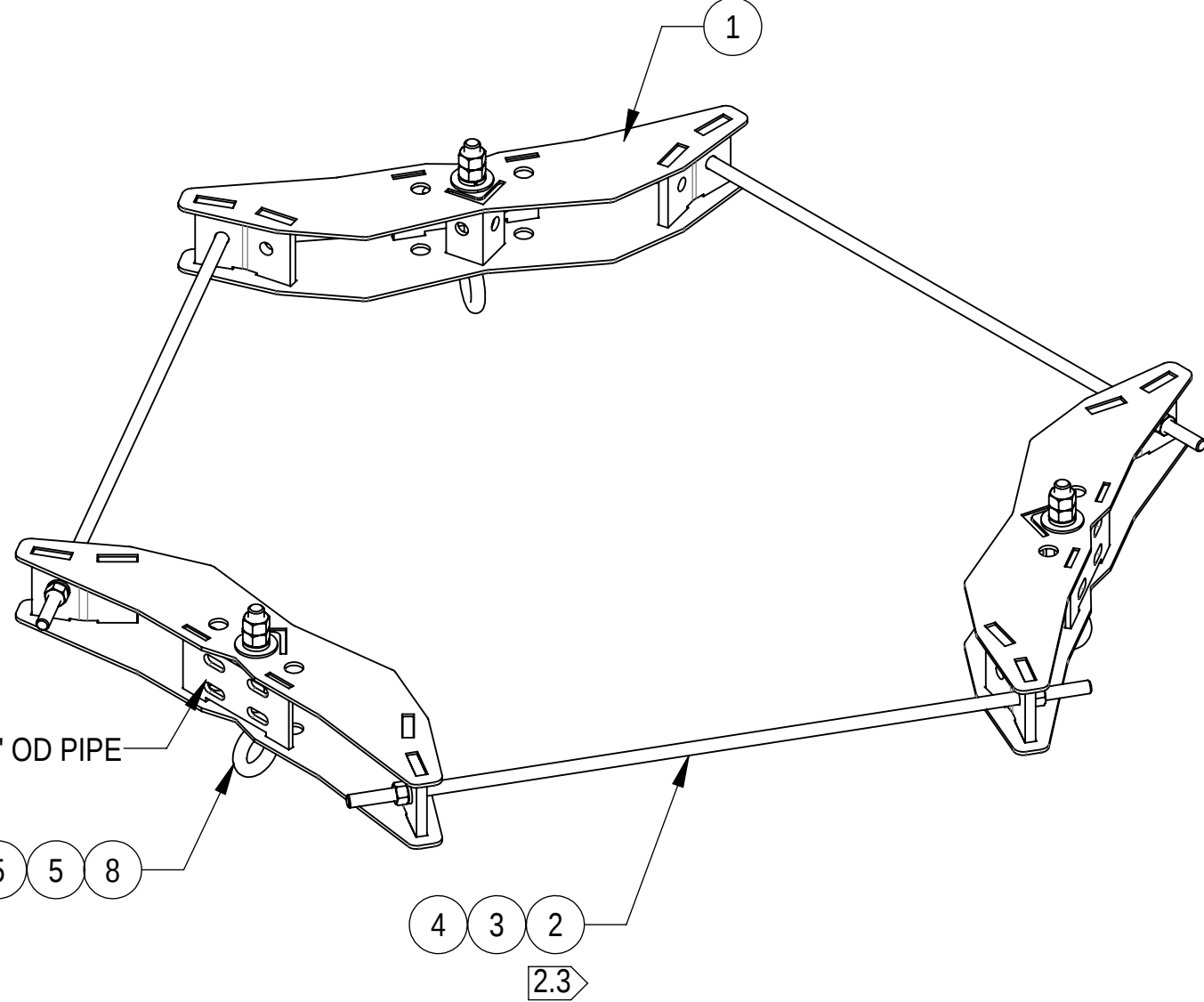
- 2.1 ANY HAZARDS OR OBSTRUCTIONS TO THE CLIMBING FACILITY AND SAFETY CLIMB MUST BE IDENTIFIED PRIOR TO INSTALLING THE APPURTENANCE. ADDITIONAL PRODUCTS MAY BE REQUIRED TO MAINTAIN THE INTEGRITY OF THE SAFETY CLIMB. DURING INSTALLATION, TEMPORARY AND/OR PERMANENT PRECAUTIONARY MEASURES SHOULD BE TAKEN TO PRESERVE THE CLIMBING FACILITY AND/OR SAFETY CLIMB.
- 2.2 INSTALL SO AS TO NOT UNNECESSARILY OBSTRUCT THE CLIMBING PATH OR CLIMBING FACILITY
- 2.3 THREADED RODS CAN BE CUT BACK POST INSTALLATION TO PREVENT OBSTRUCTION AS PER REQUIREMENTS OF TOWER OWNER
- 2.4 REVIEWED FOR USE WITH A MINIMUM POLE DIAMETER OF 10" WITH WALL THICKNESS OF 3/16" AND A YIELD STRENGTH OF 36 KSI. FOR USE ON THINNER MATERIAL REQUIRES ADDITIONAL ENGINEERING REVIEW
- 3.0 MANUFACTURING/SPECIAL REQUIREMENTS
- 3.1 TIGHTEN ALL BOLTS 3/8" OR LARGER SECURING FLAT PLATES SNUG TIGHT. TIGHTEN ALL THREADED RODS SNUG TIGHT, WITH ATTENTION TO LEAVE EQUAL DISTANCE AND EQUAL FORCE ON EACH LEG OF THREADED ROD.
- 3.2 SNUG TIGHT IS DEFINED AS THE CONDITION OBTAINED WITH A FEW IMPACTS OF AN IMPACT WRENCH OR THE FULL EFFORT OF AN INSTALLER USING AN ORDINARY SPUD WRENCH TO BRING THE CONNECTED LAYERS (PLIES) OF STEEL INTO FULL CONTACT.
- 3.3 FOR BOLTS IN A PATTERN, TIGHTEN IN A CRISS-CROSS OR STAR SEQUENCE, INCREASING TORQUE IN GRADUAL STEPS UNTIL SNUG TIGHT.

- 4.0 TEST
- 5.0 PACKAGING
- 5.1 PACKAGING SHALL MEET ANDREW REQUIREMENTS PER DOCUMENT IS-PL-3005
- 5.2 PRINTED DOCUMENT TO BE PLACED INSIDE POLYBAG AND THEN IN SHIPPING CONTAINER
- 5.3 EXTRA HARDWARE MAY BE SUPPLIED, BAGGED AND SHIPPED

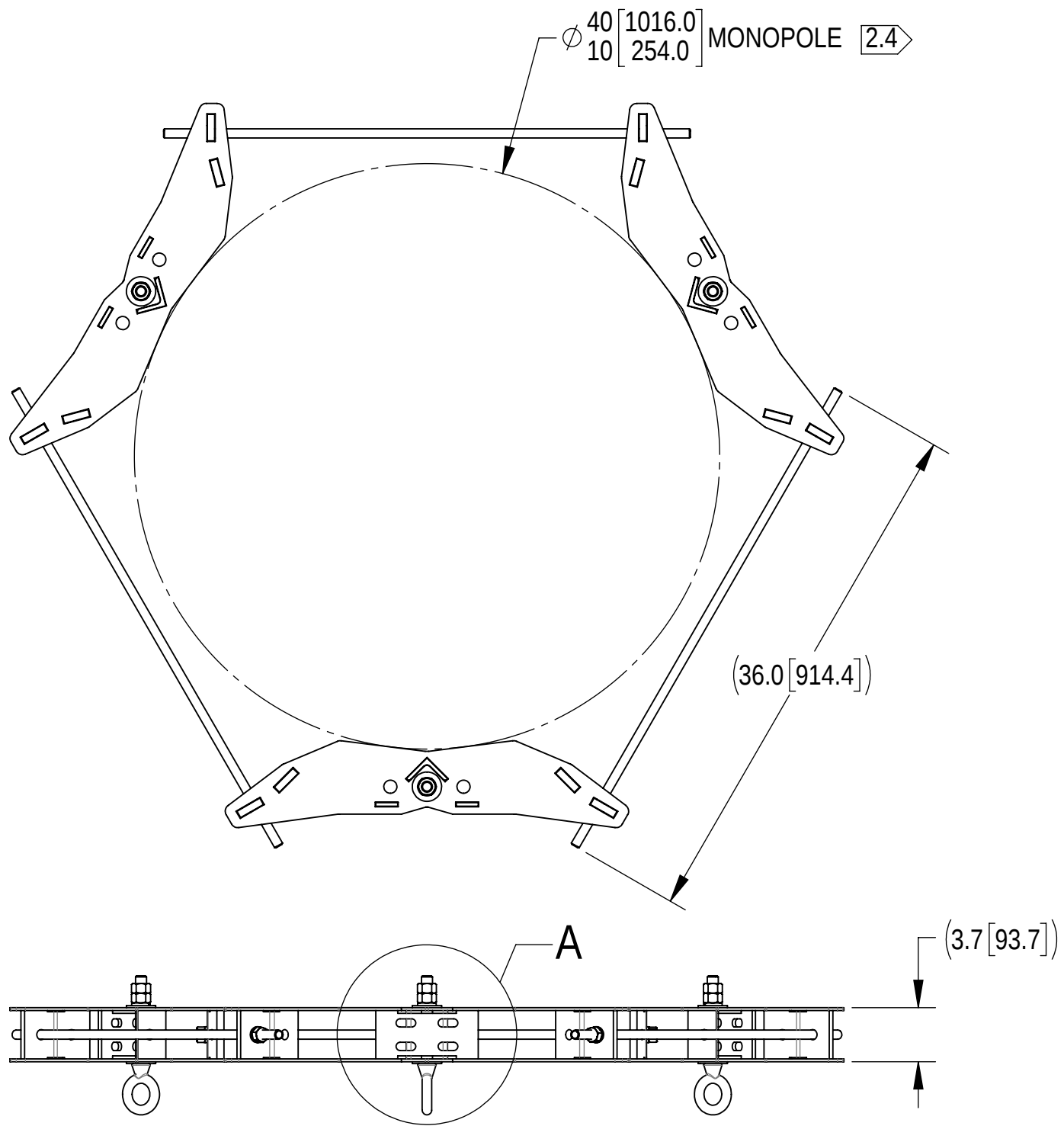
REVISIONS			
REV.	DESCRIPTION	DATE	APPROVED
A	INITIAL RELEASE	RY1002 27MAR25	YZ1080 50102254AMO



PACKAGE



DETAIL A SCALE 1 : 6



NOTE: 1 - MAXIMUM NET CABLE WEIGHT FOR STRAIGHT POLES:
 A- PER EYEBOLT = 1000 LBS
 B- PER MOUNT = 3000 LBS
 2 - MAXIMUM NET CABLE WEIGHT FOR TAPERED POLES:
 A- PER EYEBOLT = 1250 LBS
 B- PER MOUNT = 3750 LBS
 3 - REVIEWED FOR USE WITH A MINIMUM POLE DIAMETER OF 10" WITH WALL THICKNESS OF 3/16" AND A YIELD STRENGTH OF 36 KSI. FOR USE ON THINNER MATERIAL REQUIRES ADDITIONAL ENGINEERING REVIEW

COMPONENT PART NUMBERS PROVIDED FOR ASSEMBLY PURPOSES;
 INDIVIDUAL COMPONENTS MAY BE SHIPPED AS PARTS WITHIN AN INCLUDED KIT.

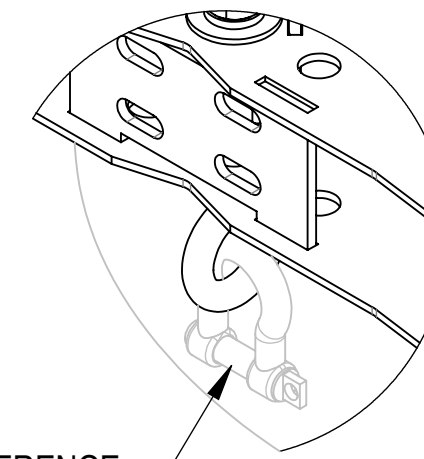
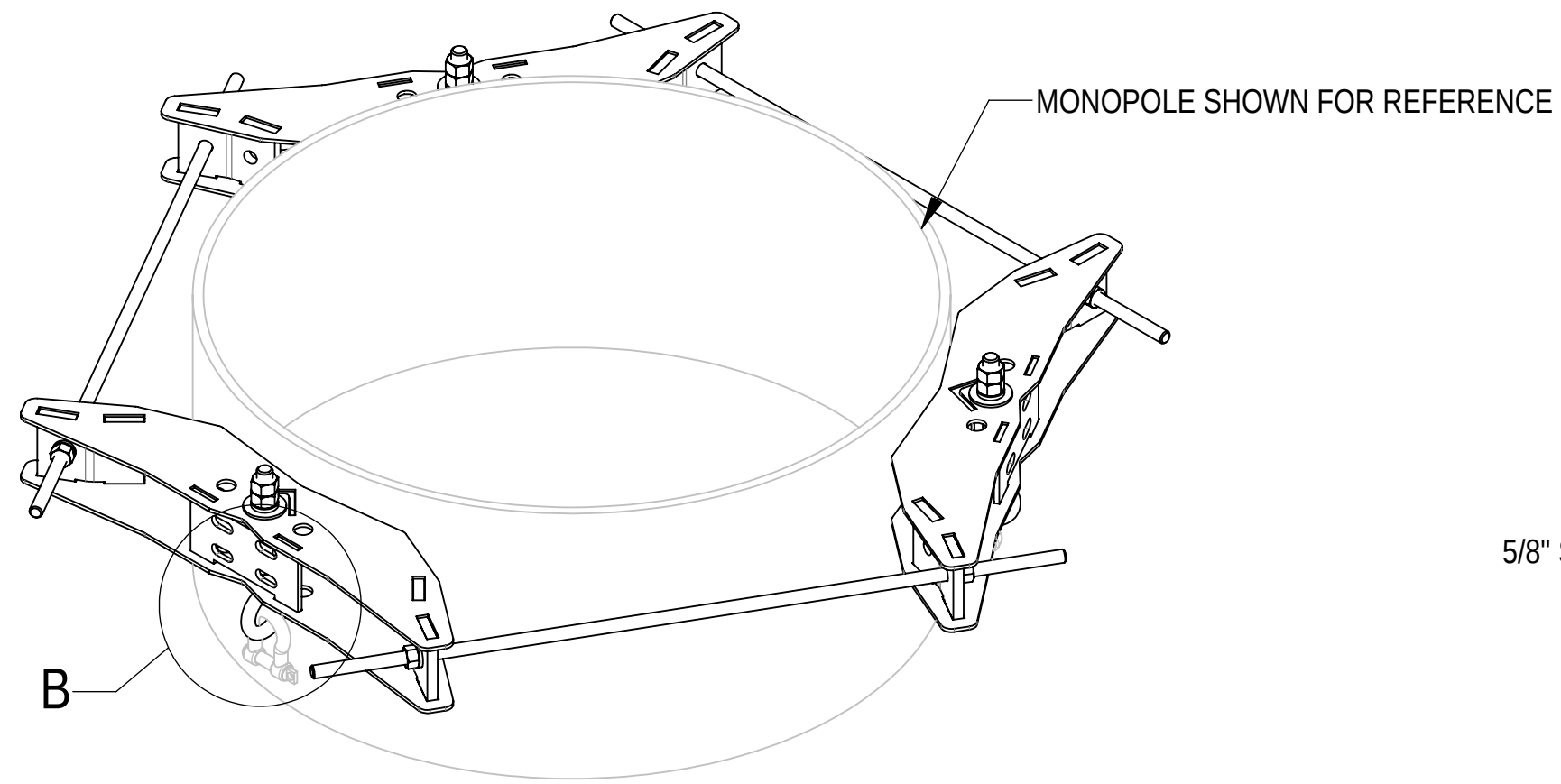
ITEM	PART NO.	DESCRIPTION	QTY.	WEIGHT	NOTE NO.
1	MTC8606-030-00	HG ANCHOR, SECTOR WELDMENT	3	17.54 LBS	
2	MT-382-36	5/8" X 36" GALV THREADED ROD	3	3.11 LBS	
3	GWL-05	5/8" GALV LOCK WASHER	6	0.03 LBS	
4	GN-05	5/8" GALV HEX NUT	6	0.08 LBS	
5	GWF-06	3/4" GALV FLAT WASHER	6	0.10 LBS	
6	GWL-06	3/4" GALV LOCK WASHER	3	0.04 LBS	
7	GN-06	3/4" GALV HEX NUT	3	0.15 LBS	
8	9674-4	BOLT,EYE,3/4X6,STL,GALV	3	1.60 LBS	

DENSITY	64.80	lbs/in ³
MASS	1174.79	lbs
VOLUME	6088.77	in ³
SURFACE AREA		in ²
HEIGHT	9.5"	
LENGTH	56.7"	
WIDTH	50.8"	

Confidential

TOLERANCES		SAP MATERIAL MASTER	
1 PLACE .X[X] ± 0.2[6.3]	3 PLACE .XXX[X] ± 0.060[1.5]	860669616-1040	
2 PLACE .XX[X] ± 0.12[3.0]	ANGLES ± 2°		
FINISH		MATERIAL	
UNLESS OTHERWISE SPECIFIED DIMENSIONS ARE IN INCHES INTERPRET PER ANSI Y 14.5M-1994		NAME	DATE
		CE RY1002	27MAR25
		RW RY1002	02/23/2026
		AD YMENG	02/23/2026
RE YMENG	02/23/2026	SCALE DOCUMENT NO.	
ECN 50102254AMO		1:10 860669616-1040	
SIZE	Auth Group INSL	MODEL	
C		VERSION	STATUS
		00	RE
		REVISION	VERSION
		A	00
		STATUS	REVISION
		RE	A
			SHEET
			1 OF 2

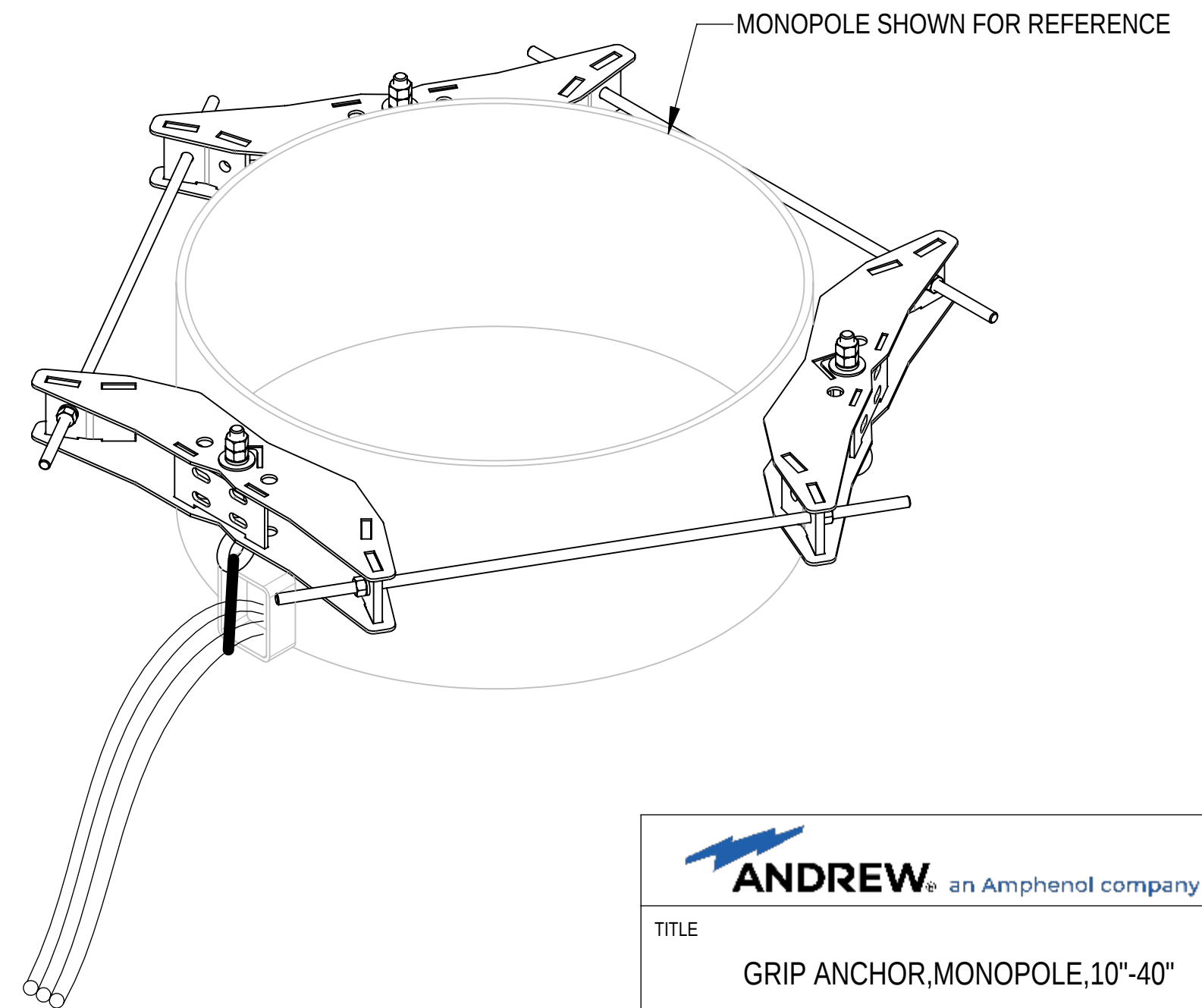
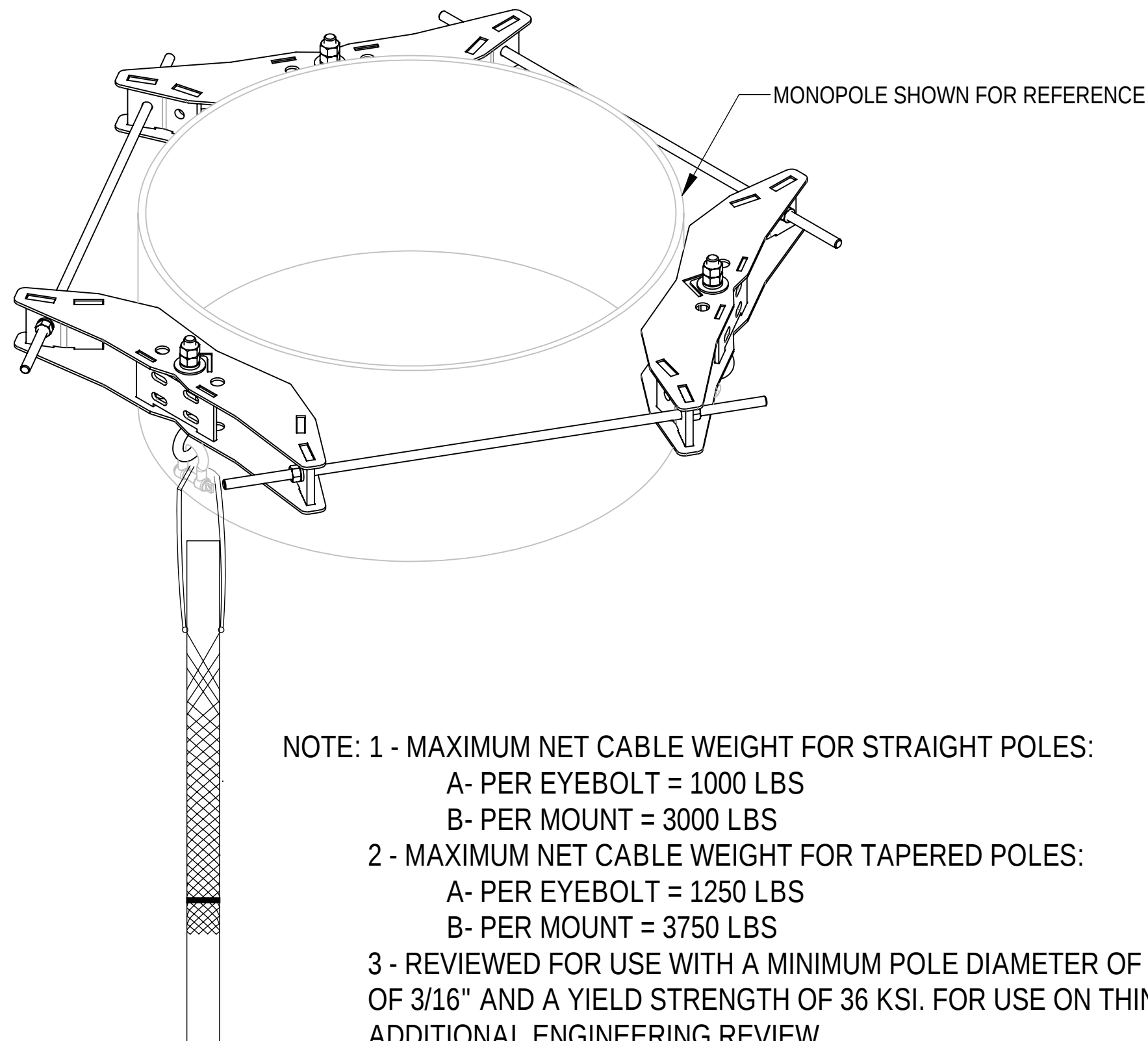
OPTIONAL ACCESSORIES
(PURCHASED SEPARATELY)



5/8" SHACKLE SHOWN FOR REFERENCE

DETAIL B
SCALE 1 : 4

SCHEMATIC DIAGRAM OF CABLE FIXING METHOD



NOTE: 1 - MAXIMUM NET CABLE WEIGHT FOR STRAIGHT POLES:

A- PER EYEBOLT = 1000 LBS

B- PER MOUNT = 3000 LBS

2 - MAXIMUM NET CABLE WEIGHT FOR TAPERED POLES:

A- PER EYEBOLT = 1250 LBS

B- PER MOUNT = 3750 LBS

3 - REVIEWED FOR USE WITH A MINIMUM POLE DIAMETER OF 10" WITH WALL THICKNESS OF 3/16" AND A YIELD STRENGTH OF 36 KSI. FOR USE ON THINNER MATERIAL REQUIRES ADDITIONAL ENGINEERING REVIEW



TITLE
GRIP ANCHOR, MONOPOLE, 10"-40"

SIZE C	SCALE 1:8	DOCUMENT NO. 860669616-1040
------------------	---------------------	--------------------------------

DRAWING			SHEET 2 OF 2
VERSION	STATUS	REVISION	
00	RE	A	

Confidential

