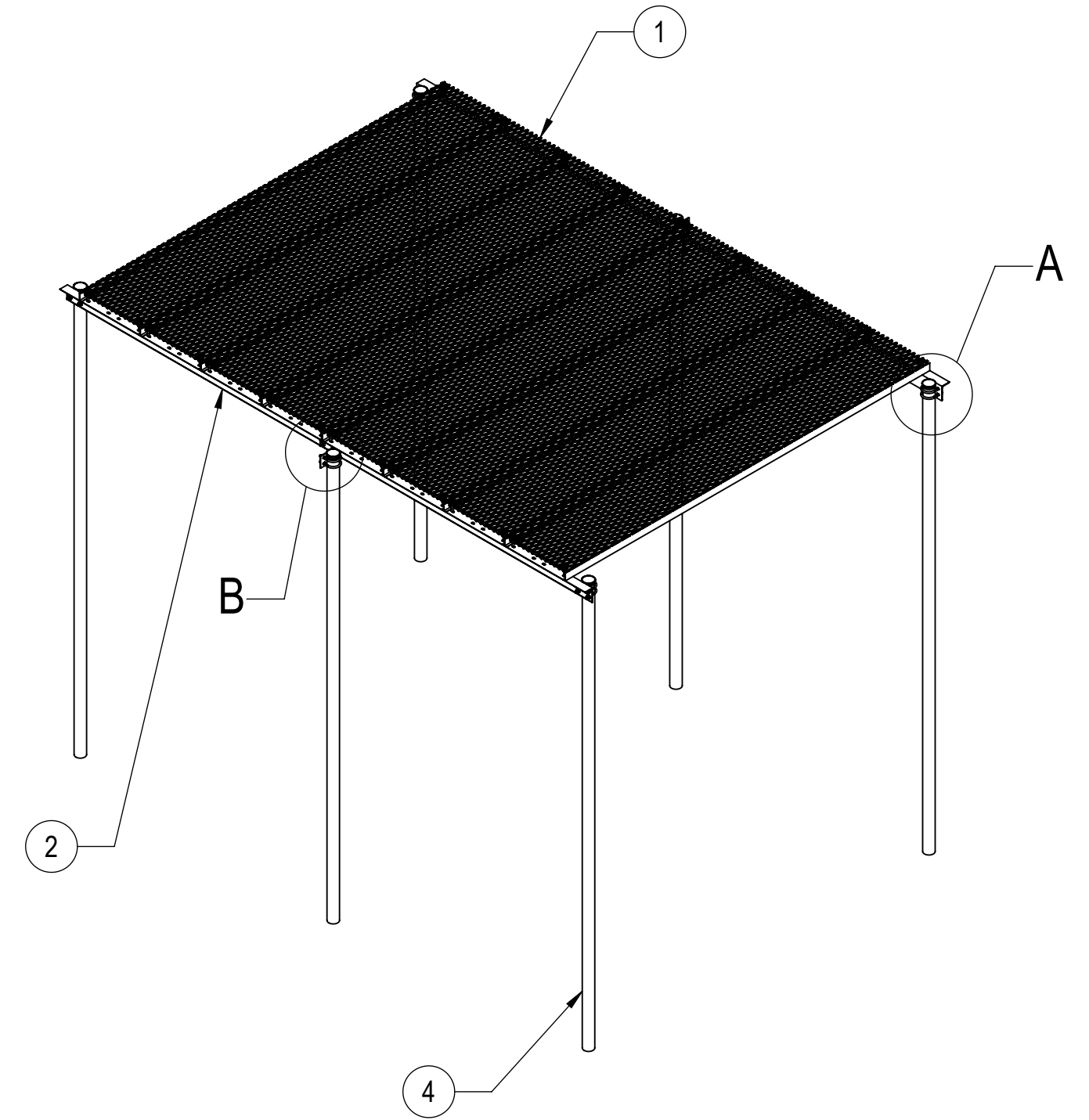
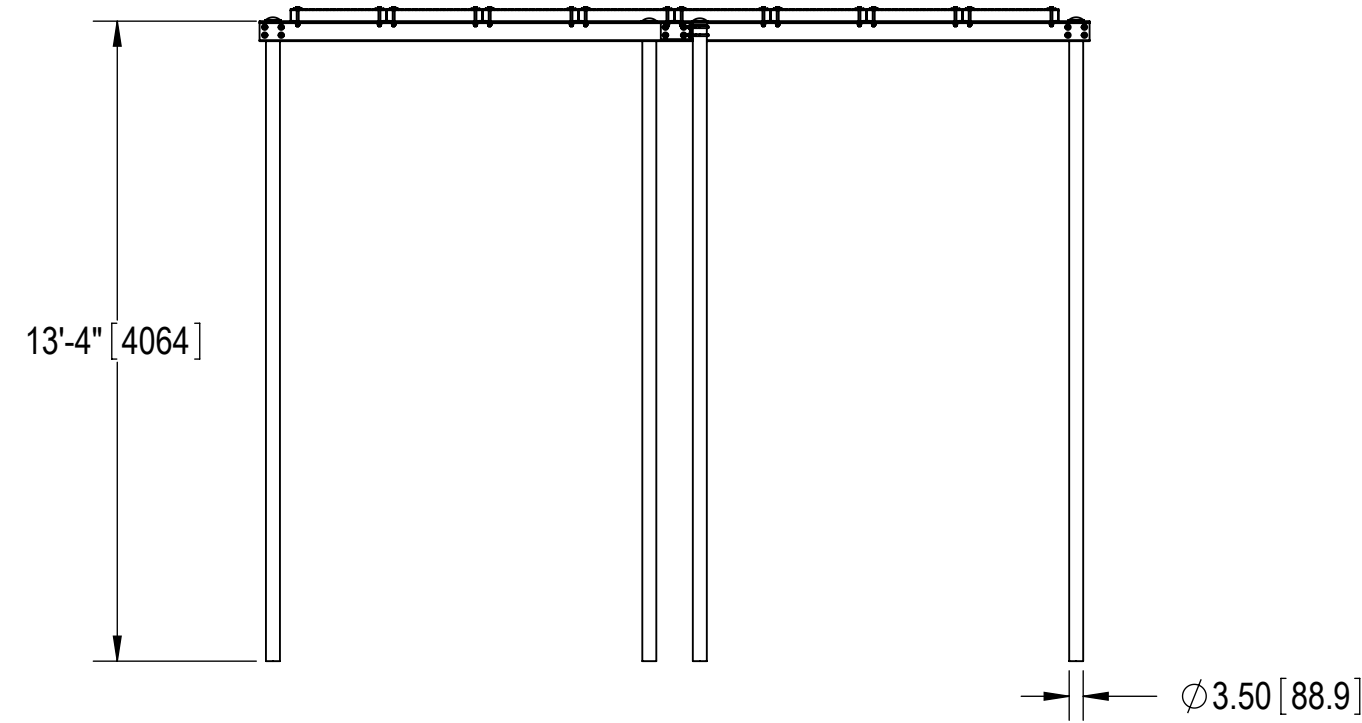
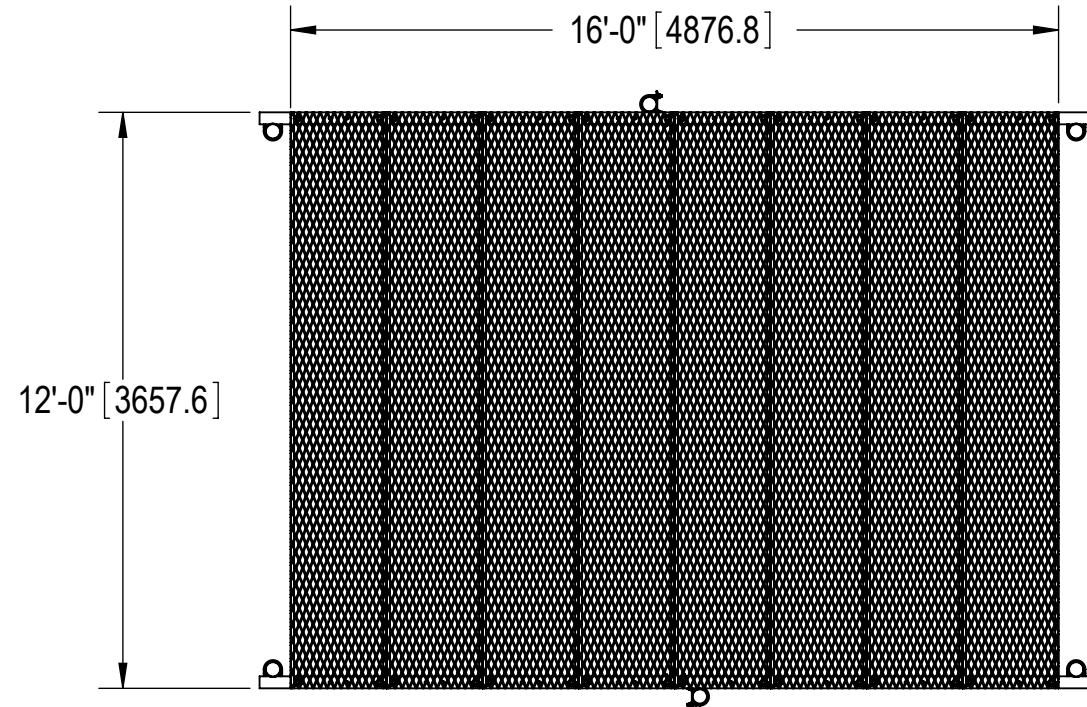


- 1.0 GENERAL NOTES
 1.1 ALL METRIC DIMENSIONS ARE IN BRACKETS [X.X]
 1.2 FOR PATENT INFO: <https://www.adwpat.com>
- 2.0 DESIGN NOTES
 2.1 ANY HAZARDS OR OBSTRUCTIONS TO THE CLIMBING FACILITY AND SAFETY CLIMB MUST BE IDENTIFIED PRIOR TO INSTALLING THE APPURTENANCE. ADDITIONAL PRODUCTS MAY BE REQUIRED TO MAINTAIN THE INTEGRITY OF THE SAFETY CLIMB. DURING INSTALLATION, TEMPORARY AND/OR PERMANENT PRECAUTIONARY MEASURES SHOULD BE TAKEN TO PRESERVE THE CLIMBING FACILITY AND/OR SAFETY CLIMB.
- 3.0 MANUFACTURING/SPECIAL REQUIREMENTS
 3.1 TIGHTEN ALL BOLTS 3/8" OR LARGER SECURING FLAT PLATES SNUG TIGHT. TIGHTEN ALL U-BOLTS SNUG TIGHT, WITH ATTENTION TO LEAVE EQUAL DISTANCE AND EQUAL FORCE ON EACH LEG OF U-BOLT.
 3.2 SNUG TIGHT IS DEFINED AS THE CONDITION OBTAINED WITH A FEW IMPACTS OF AN IMPACT WRENCH OR THE FULL EFFORT OF AN INSTALLER USING AN ORDINARY SPUD WRENCH TO BRING THE CONNECTED LAYERS (PLIES) OF STEEL INTO FULL CONTACT.
 3.3 FOR BOLTS IN A PATTERN, TIGHTEN IN A CRISS-CROSS OR STAR SEQUENCE, INCREASING TORQUE IN GRADUAL STEPS UNTIL SNUG TIGHT.
- 4.0 TEST
 5.0 PACKAGING
 5.1 PACKAGING SHALL MEET ANDREW REQUIREMENTS PER DOCUMENT IS-PL-3005
 5.2 PRINTED DOCUMENT TO BE PLACED INSIDE POLYBAG AND THEN IN SHIPPING CONTAINER
 5.3 EXTRA HARDWARE MAY BE SUPPLIED, BAGGED AND SHIPPED

REVISIONS			
REV.	DESCRIPTION	DATE	APPROVED
A	INITIAL RELEASE	DRR 28AUG12	TP
B	REPLACED GB-04165 WITH GB-0416A	YMENG 02AUG21	TP 11889
C	UPDATED DRAWING FORMAT	YX1027 13NOV25	BA1025 50105808AMO



COMPONENT PART NUMBERS PROVIDED FOR ASSEMBLY PURPOSES;
 INDIVIDUAL COMPONENTS MAY BE SHIPPED AS PARTS WITHIN AN INCLUDED KIT.

ITEM	PART NO.	DESCRIPTION	QTY.	WEIGHT	NOTE NO.
1	MTC963101	24" X 12' SAFETY GRATING	8	96.36 LBS	
2	MTC345811	ICE SHIELD SUPPORT BRACKET	2	110.97 LBS	
3	MTC345812	CENTER LEG SUPPORT BRACKET	2	4.08 LBS	
4	MF-130	3.5" O.D. X 13'-4" DIRECT BURIAL PIPE COLUMN	6	57.97 LBS	
5	GUB-4355	1/2" X 3-5/8" X 5" GALV U-BOLT	12	0.71 LBS	
6	GB-0416A	1/2" X 1-3/4" GALV BOLT KIT (A325)	8	0.14 LBS	
7	GB-04445	1/2" X 4-1/2" GALV BOLT KIT	32	0.30 LBS	
8	MT-388	WASHER, 1-1/2" X 1 1/2", 9/16"HOLE,SQ	32	0.11 LBS	
9	GWF-04	1/2" GALV FLAT WASHER	40	0.04 LBS	
10	PC-034	PIPE CAP 3-1/2"	6	0.66 LBS	

DENSITY	1381.62	lbs/in ³
MASS	4867.27	lbs
VOLUME	76804.26	in ³
SURFACE AREA		in ²
HEIGHT	163.6"	
LENGTH	207.5"	
WIDTH	144.0"	

ANDREW® an Amphenol company

TOLERANCES: 1 PLACE .X[X] ± 0.12[3.0], 2 PLACE .XX[X] ± 0.06[1.5], 3 PLACE .XXX[X] ± 0.031[0.8], ANGLES ± 2°

SAP MATERIAL MASTER: **MTC34581216**

FINISH: [Hatched Box] MATERIAL: [Empty Box]

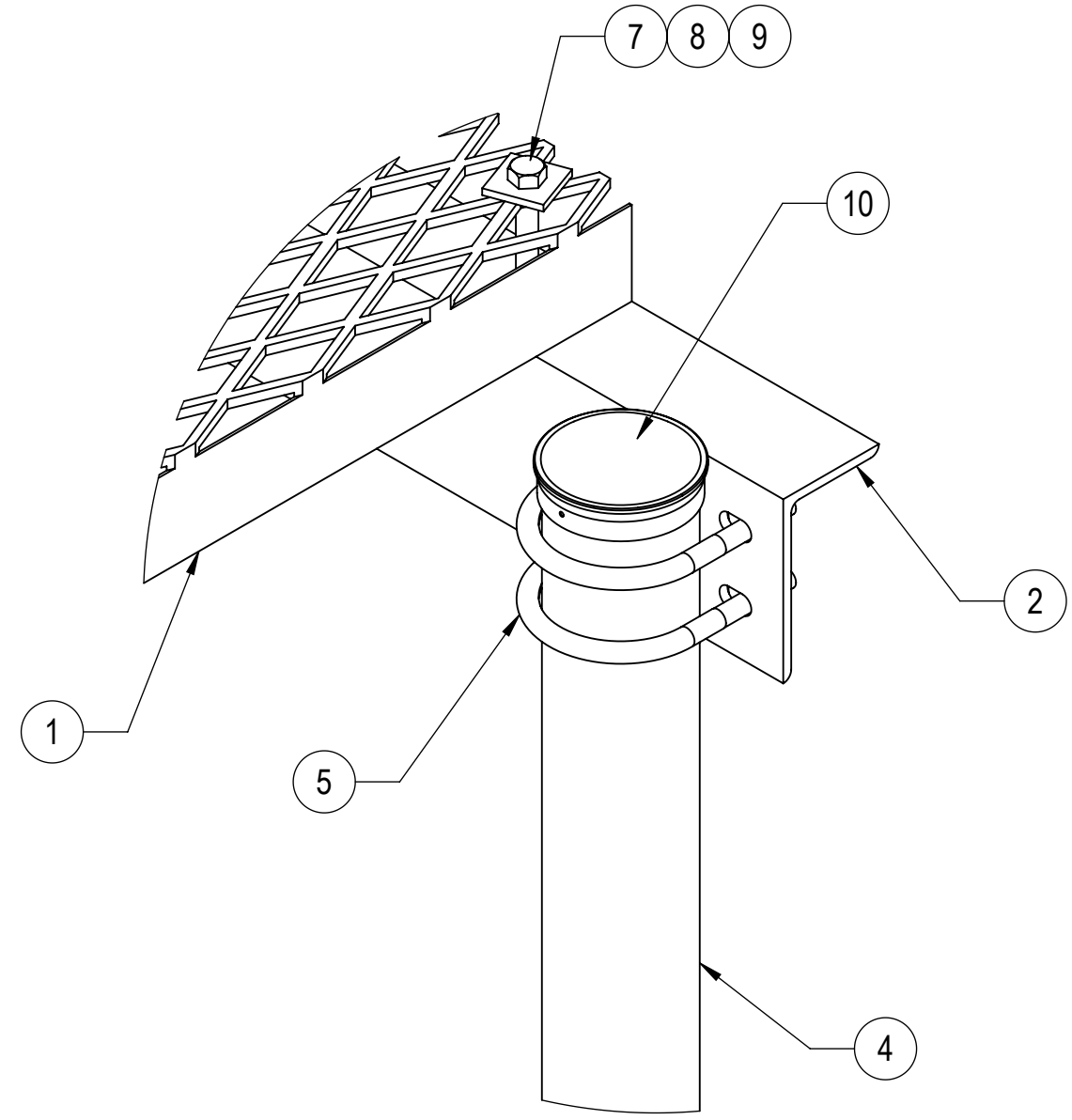
NAME	DATE	TITLE
CE DRR	28AUG12	12' X 16' EQUIPMENT PLATFORM ICE CANOPY
RW YX1027	12/10/2025	
AD YMENG	12/10/2025	
RE YMENG	12/10/2025	

SCALE: **1:64** DOCUMENT NO.: **MTC34581216**

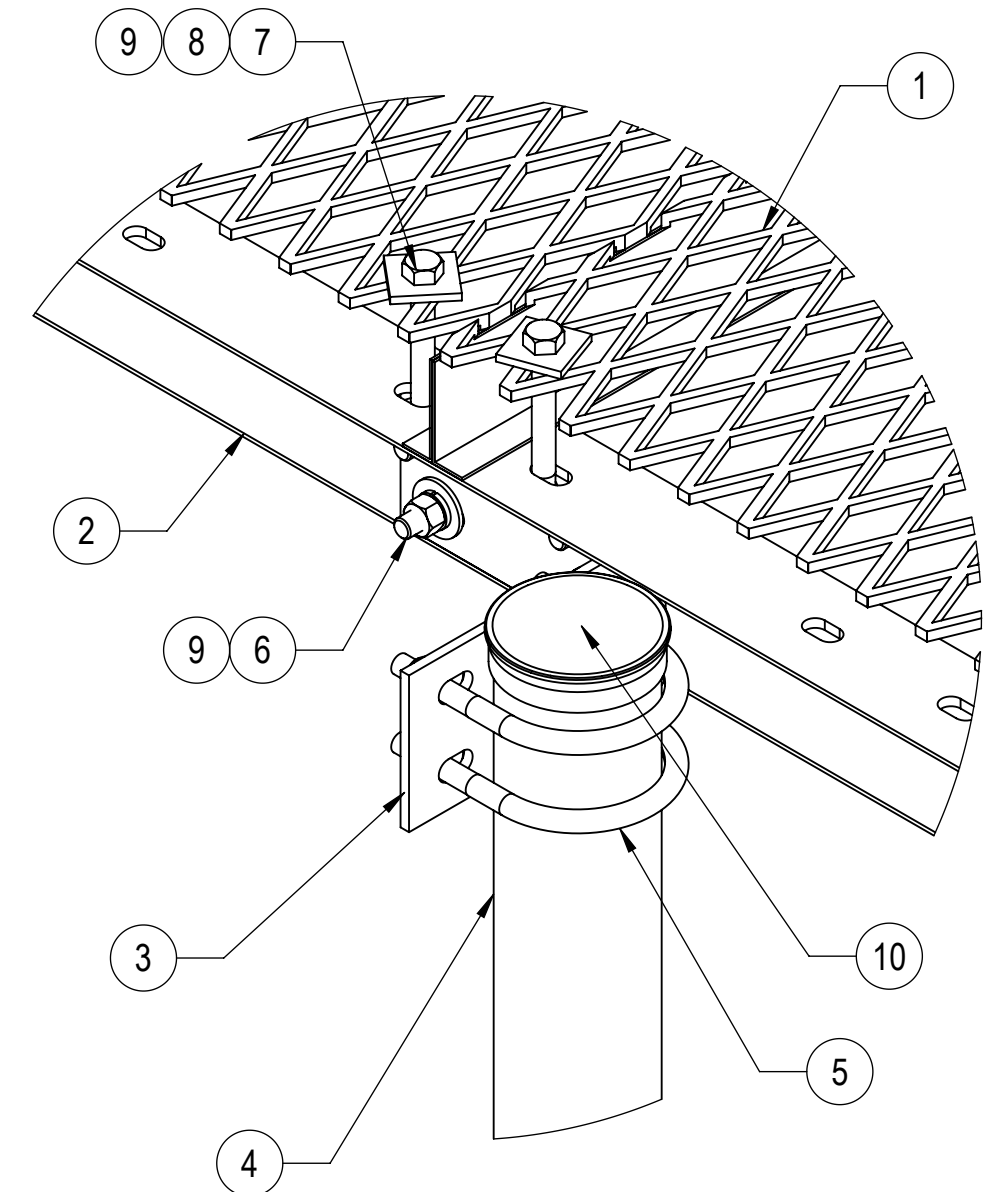
ECN 50105808AMO

SIZE	Auth Group	INSL	MODEL	DRAWING			SHEET		
C	[Symbol]	[Symbol]	02	RE	C	02	RE	C	1 OF 2

Confidential



DETAIL A



DETAIL B



TITLE
12' X 16' EQUIPMENT PLATFORM ICE CANOPY

SIZE C	SCALE 1:4	DOCUMENT NO. MTC34581216
------------------	---------------------	-----------------------------

DRAWING			SHEET 2 OF 2
VERSION	STATUS	REVISION	
02	RE	C	

Confidential

