

4

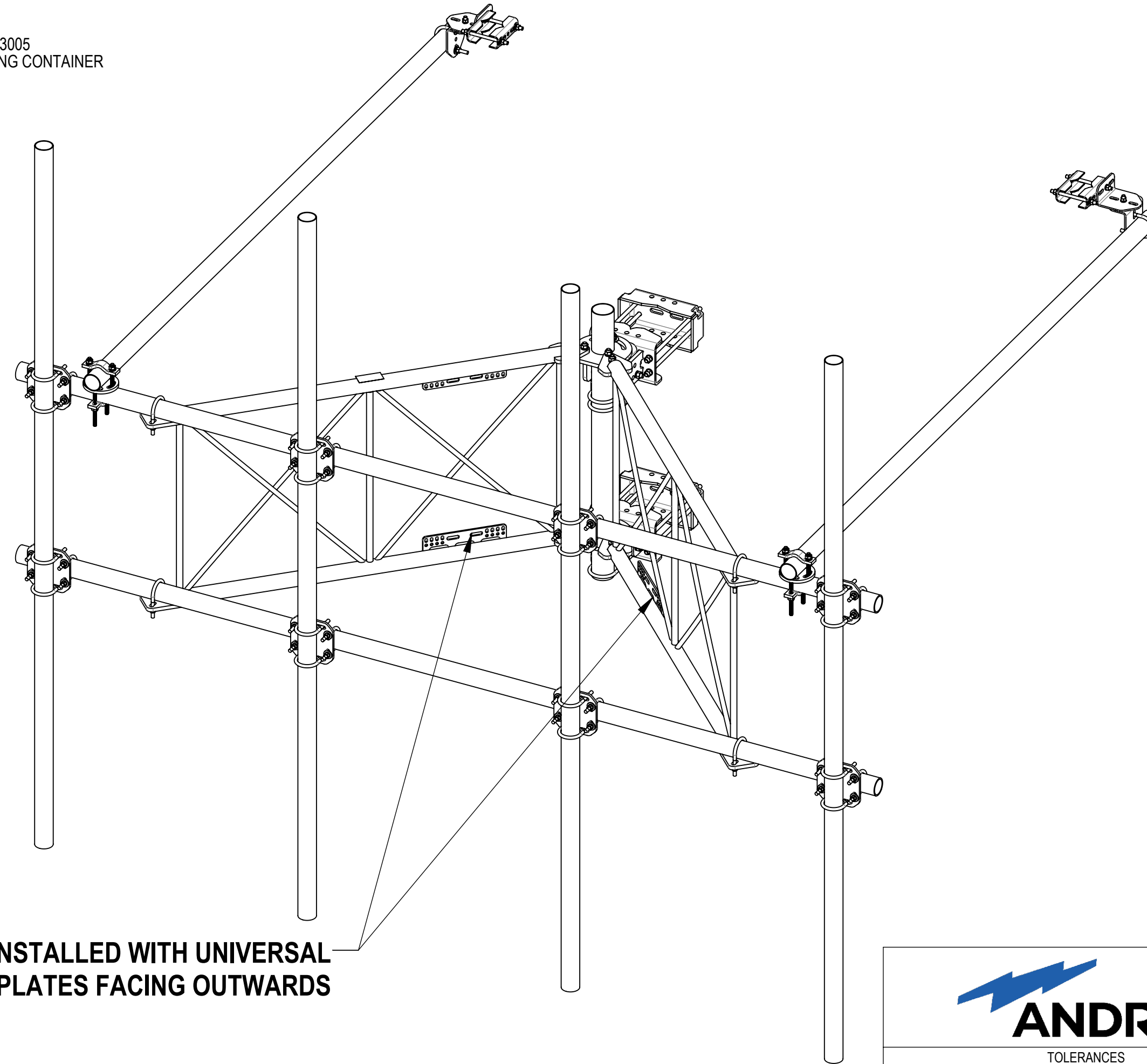
3

2


1

- 1.0 GENERAL NOTES
  - 1.1 ALL METRIC DIMENSIONS ARE IN BRACKETS [X. X]
  - 1.2 FOR PATENT INFO: <https://www.adwpat.com>
- 2.0 DESIGN NOTES
  - 2.1 ANY HAZARDS OR OBSTRUCTIONS TO THE CLIMBING FACILITY AND SAFETY CLIMB MUST BE IDENTIFIED PRIOR TO INSTALLING THE APPURTENANCE. ADDITIONAL PRODUCTS MAY BE REQUIRED TO MAINTAIN THE INTEGRITY OF THE SAFETY CLIMB. DURING INSTALLATION, TEMPORARY AND/OR PERMANENT PRECAUTIONARY MEASURES SHOULD BE TAKEN TO PRESERVE THE CLIMBING FACILITY AND/OR SAFETY CLIMB.
  - 2.2 UP TO 5° TAPER AVAILABLE ON MODELS THAT SUPPORT ADJUSTMENT.
- 3.0 MANUFACTURING/SPECIAL REQUIREMENTS
  - 3.1 TIGHTEN ALL BOLTS SECURING FLAT PLATES BY THE TURN-OF-NUT METHOD. TIGHTEN ALL U-BOLTS USING TURN-OF-NUT METHOD WITH ATTENTION TO LEAVE EQUAL DISTANCE AND EQUAL FORCE ON EACH LEG OF THE U-BOLT.
- 4.0 TEST
- 5.0 PACKAGING
  - 5.1 PACKAGING SHALL MEET ANDREW REQUIREMENTS PER DOCUMENT IS-PL-3005
  - 5.2 PRINTED DOCUMENT TO BE PLACED INSIDE POLYBAG AND THEN IN SHIPPING CONTAINER
  - 5.3 EXTRA HARDWARE MAY BE SUPPLIED, BAGGED AND SHIPPED


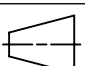
REVISIONS			
REV.	DESCRIPTION	DATE	APPROVED
A	INITIAL RELEASE	YMENG 16MAY24	YZ1080 40195671CMO



**SHOULD BE INSTALLED WITH UNIVERSAL INTERFACE PLATES FACING OUTWARDS**



**ANDREW**® an Amphenol company

TOLERANCES		SAP MATERIAL MASTER						
1 PLACE .X[X] ± 0.2[6.3]	3 PLACE .XXX[X] ± 0.060[1.5]	<b>SFG22HDXL-12-4-126</b>						
2 PLACE .XX[X] ± 0.12[3.0]	ANGLES ± 2°							
FINISH		MATERIAL						
UNLESS OTHERWISE SPECIFIED DIMENSIONS ARE IN INCHES INTERPRET PER ANSI Y 14.5M-1994		NAME	DATE	TITLE				
		CE YMENG	16MAY24	<b>SF,12'FP,(4)126"AP</b>				
		RW YC1059	06/17/2025					
		AD YMENG	06/17/2025	SCALE	DOCUMENT NO.			
		RE YMENG	06/17/2025	<b>1:16</b>	<b>SFG22HDXL-12-4-126</b>			
ECN 40195671CMO								
SIZE	Auth Group	INSL	MODEL	DRAWING		SHEET 1 OF 6		
<b>C</b>			VERSION	STATUS	REVISION		VERSION	STATUS
			01	RE	B	00	RE	A

DENSITY		lbs/in³
MASS	803.81	lbs
VOLUME	2837.89	in³
SURFACE AREA	30935.88	in²
HEIGHT	126"	
LENGTH	150"	
WIDTH	120"	

Confidential

4

3

2

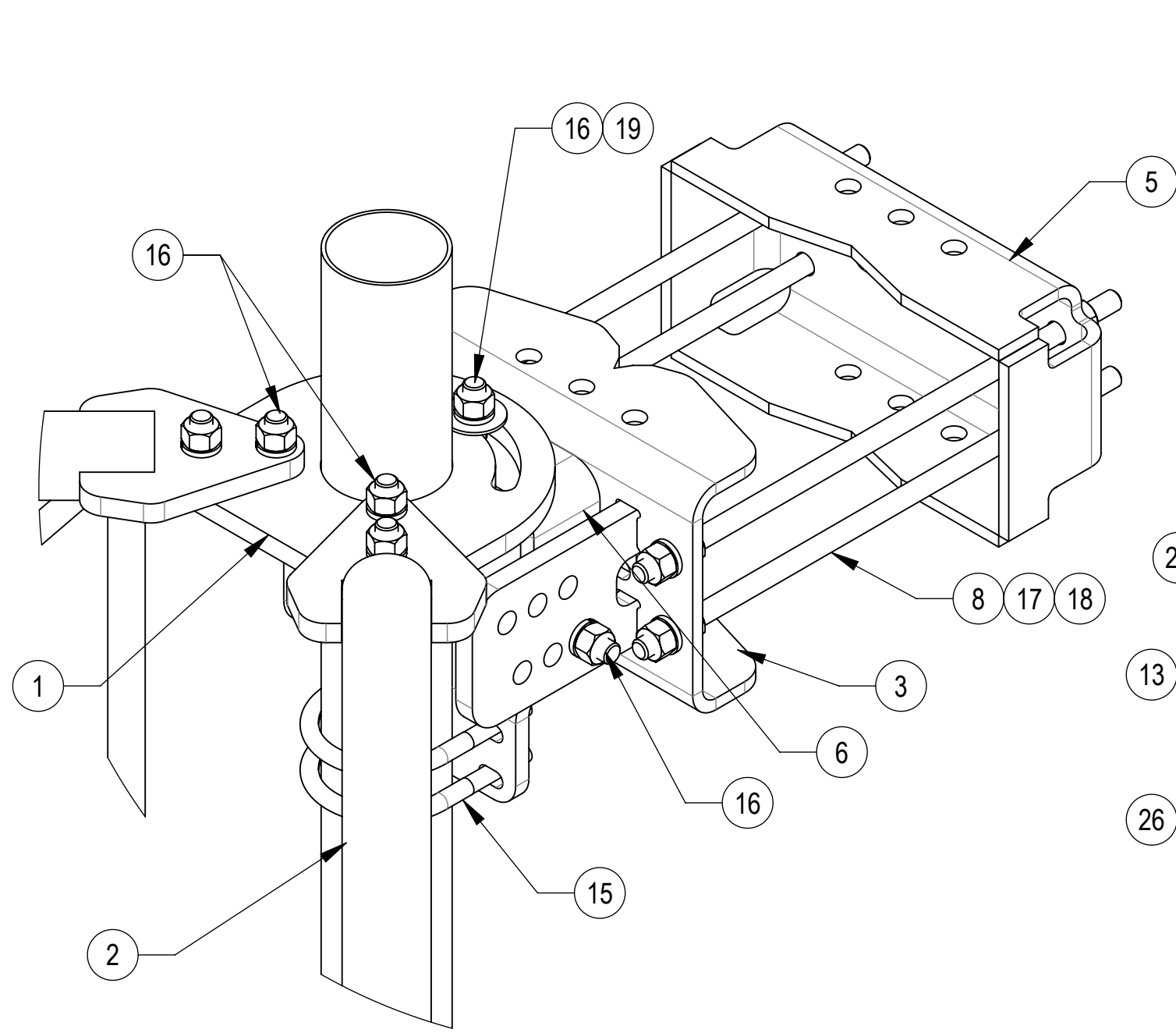
1

4

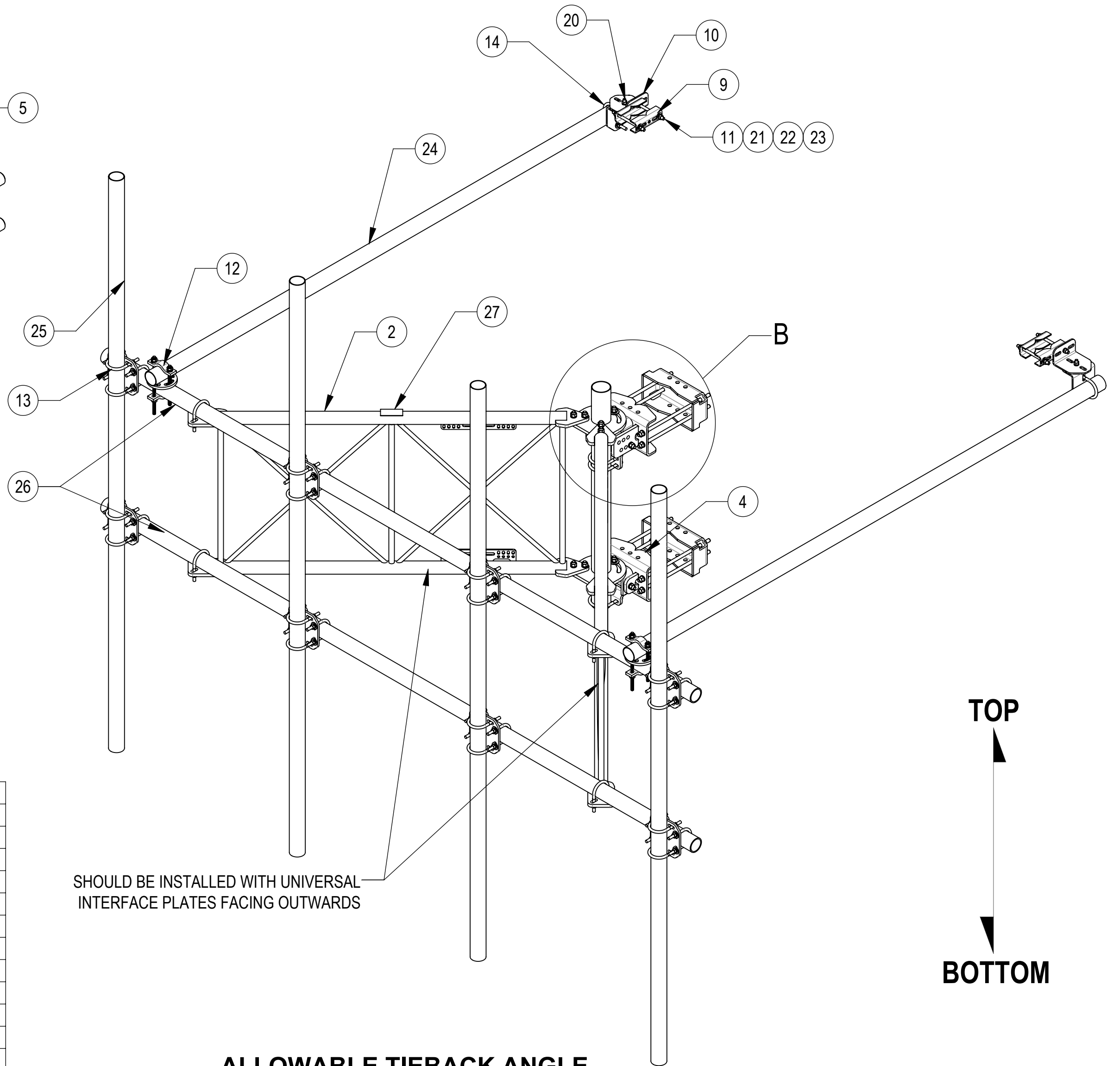
3

2

1



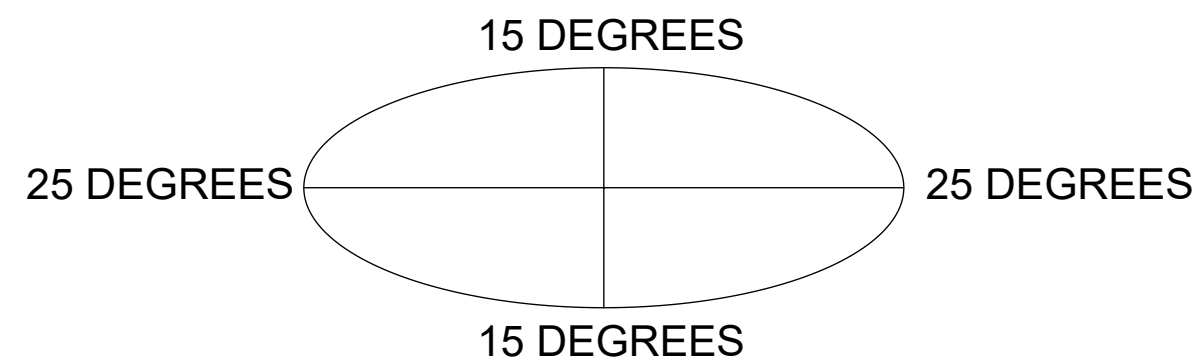
**DETAIL B**  
SCALE 1 : 4



SHOULD BE INSTALLED WITH UNIVERSAL  
INTERFACE PLATES FACING OUTWARDS

**ALLOWABLE TIEBACK ANGLE**

+15 DEGREES VERTICAL  
+25 DEGREES HORIZONTAL



COMPONENT PART NUMBERS PROVIDED FOR ASSEMBLY PURPOSES;  
INDIVIDUAL COMPONENTS MAY BE SHIPPED AS PARTS WITHIN AN INCLUDED KIT.

ITEM	PART NO.	DESCRIPTION	QTY.	WEIGHT	NOTE NO.
1	SFG2270	BACK VERTICAL ARM MOUNT	1	36.96 LBS	
2	SFG2298-00	ARM, STANDOFF, G22HDXL	2	89.48 LBS	
3	SFG2380	WELDMENT, HD, TOP TAPER BRACKET	1	22.78 LBS	
4	SFG2381	WELDMENT, HD, LOWER TOWER LEG BRACKET	1	17.42 LBS	
5	SFG2289	G2 RRU BACK CLAMP, HD	2	18.65 LBS	
6	SFG2386	WELDMENT, SFG2 AZIMUTH BRACKET	1	10.07 LBS	
7	SFG2397-00	WELDMENT, G23 AZIMUTH BRACKET	1	7.94 LBS	
8	MT-382-18	5/8" X 18" THREADED ROD	8	1.43 LBS	
9	SAB01	FORMED CLAMP	4	1.35 LBS	
10	XAU01	ANGLE, CROSSOVER, 1.9-3.5" X 1.9-3.5" OD	4	2.98 LBS	
11	MT-379-8	1/2" X 8" GALV THREADED ROD	4	0.45 LBS	
12	XP-R	CROSSOVER PLATE, ROUND, UP TO 3.5" OD	2	6.20 LBS	
13	XP-2525	CROSSOVER PLATE KIT, 2-7/8 OD X 2-7/8 OD	8	8.37 LBS	
14	GUB-4352	1/2" X 3" X 5-1/4" GALV U-BOLT	6	0.71 LBS	
15	GUB-4355	1/2" X 3-5/8" X 5" GALV U-BOLT	3	0.71 LBS	
16	GB-05225	5/8" X 2-1/4" GALV BOLT KIT	14	0.28 LBS	
17	GN-05	5/8" GALV HEX NUT	24	0.08 LBS	
18	GWL-05	5/8" GALV LOCK WASHER	16	0.03 LBS	
19	GWF-05	5/8" GALV FLAT WASHER, 1.7OD	2	0.06 LBS	
20	GB-04145	1/2" X 1-1/2" GALV BOLT KIT	2	0.13 LBS	
21	GN-04	1/2" GALV HEX NUT	10	0.04 LBS	
22	GWL-04	1/2" GALV LOCK WASHER	10	0.01 LBS	
23	GWF-04	1/2" GALV FLAT WASHER	8	0.04 LBS	
24	MT546120120	PIPE, 2.875"OD X 120"	2	35.44 LBS	
25	MT546126120	PIPE, 2.875"OD X 126"	4	37.21 LBS	
26	MT-546-150	PIPE, 2.875"OD X 150"	2	72.67 LBS	
27	SFG2296	LABEL, SFG22HDXL	1	0.03 LBS	



TITLE				
SF, 12'FP, (4)126"AP				
SIZE	SCALE	DOCUMENT NO.		
<b>C</b>	<b>1:16</b>	SFG22HDXL-12-4-126		
DRAWING		REVISION		SHEET
VERSION	STATUS	REVISION	2 OF 6	
00	RE	A		

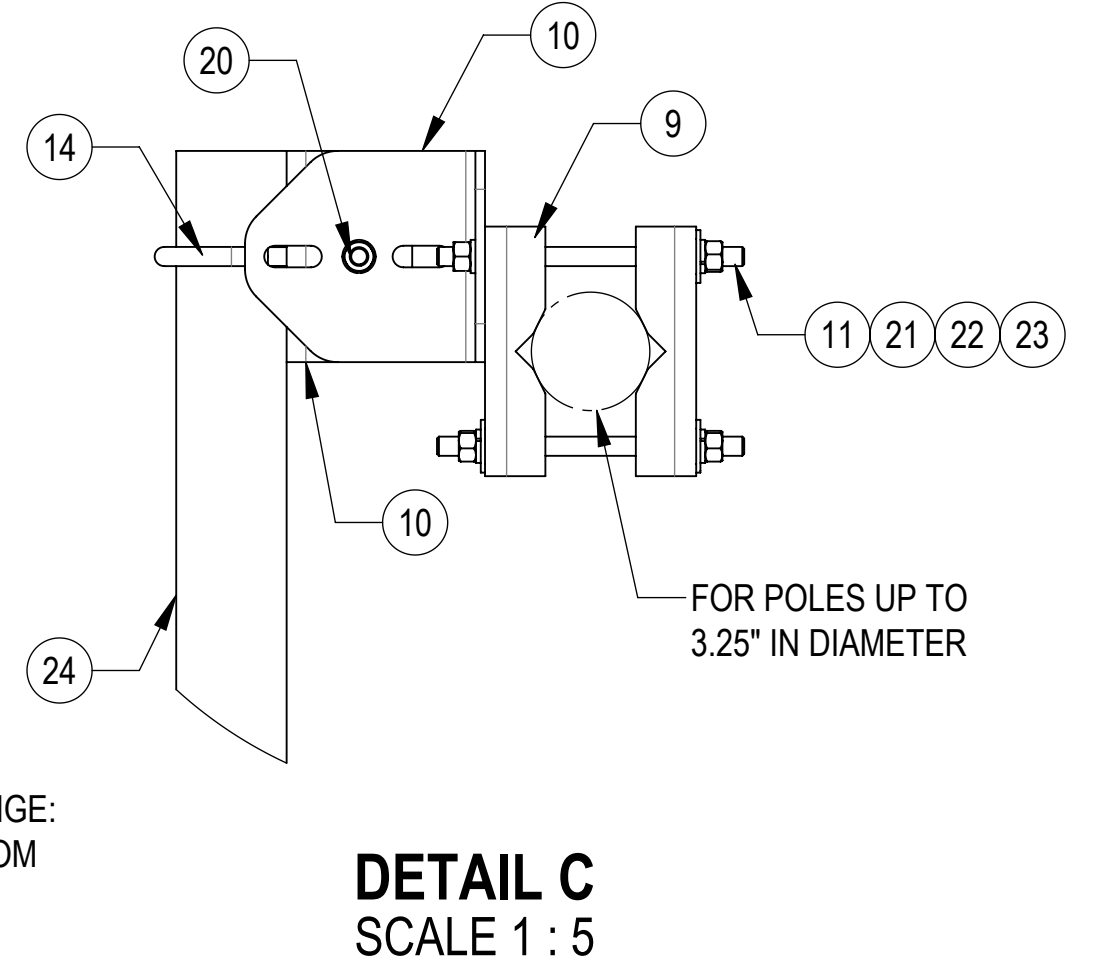
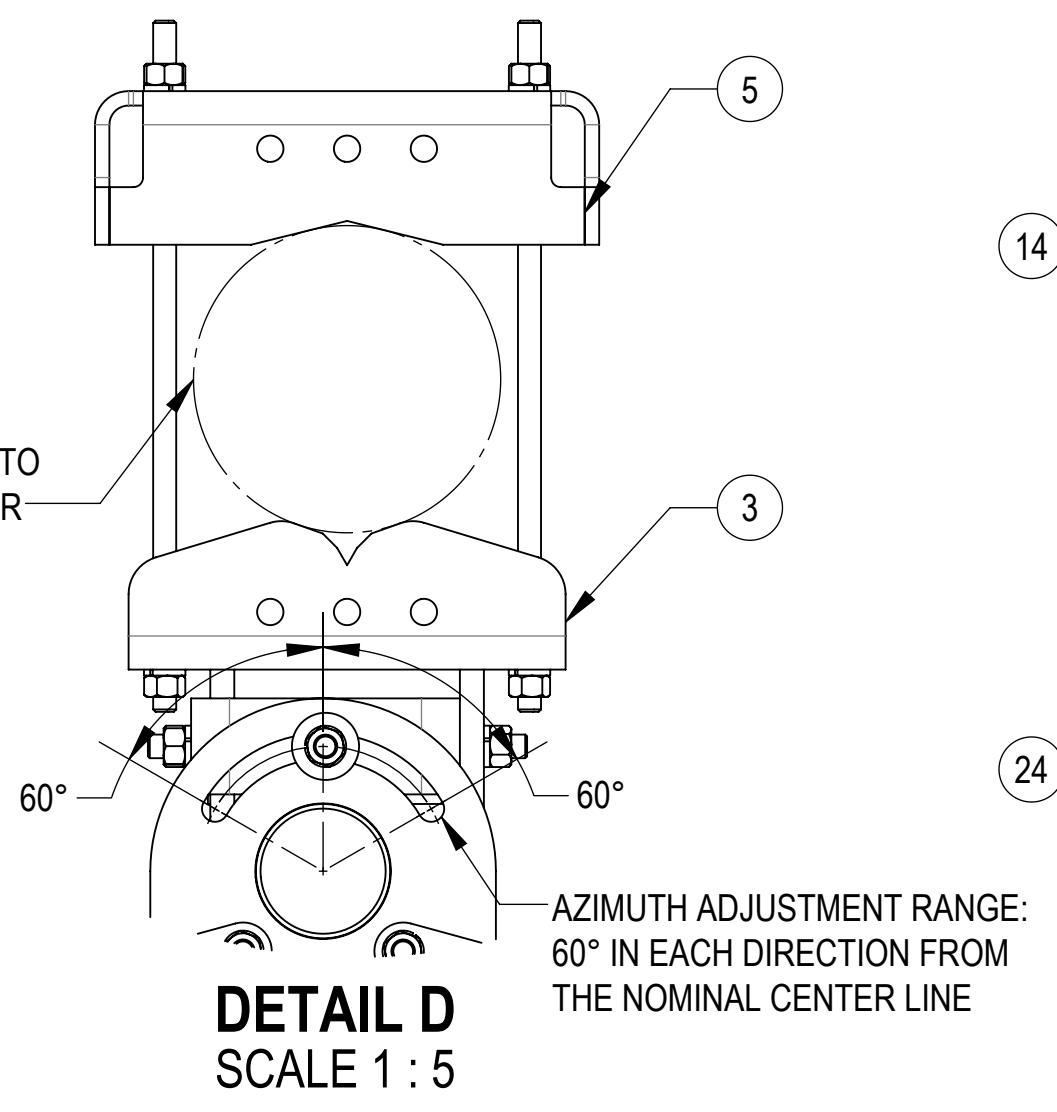
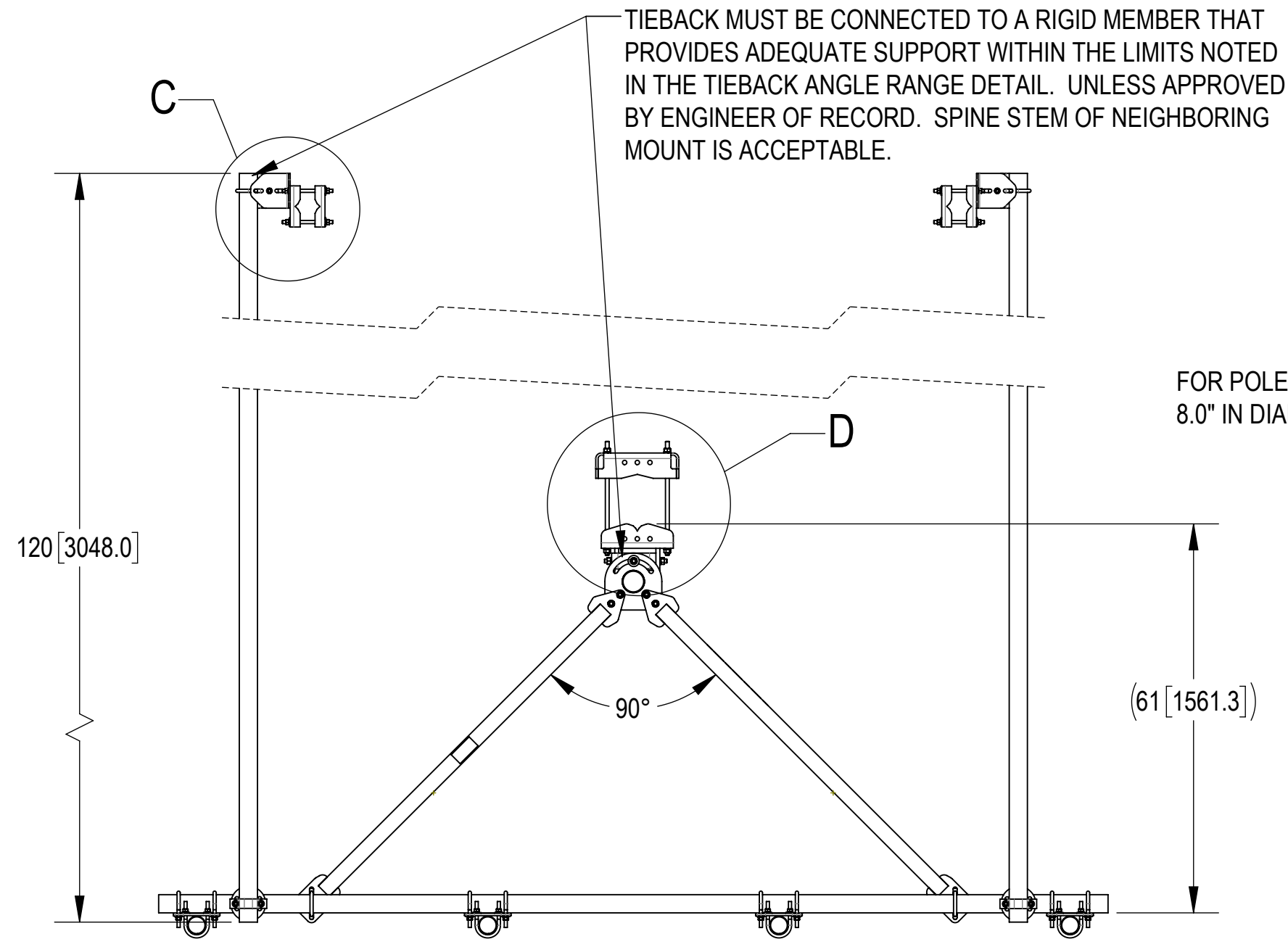
Confidential

4

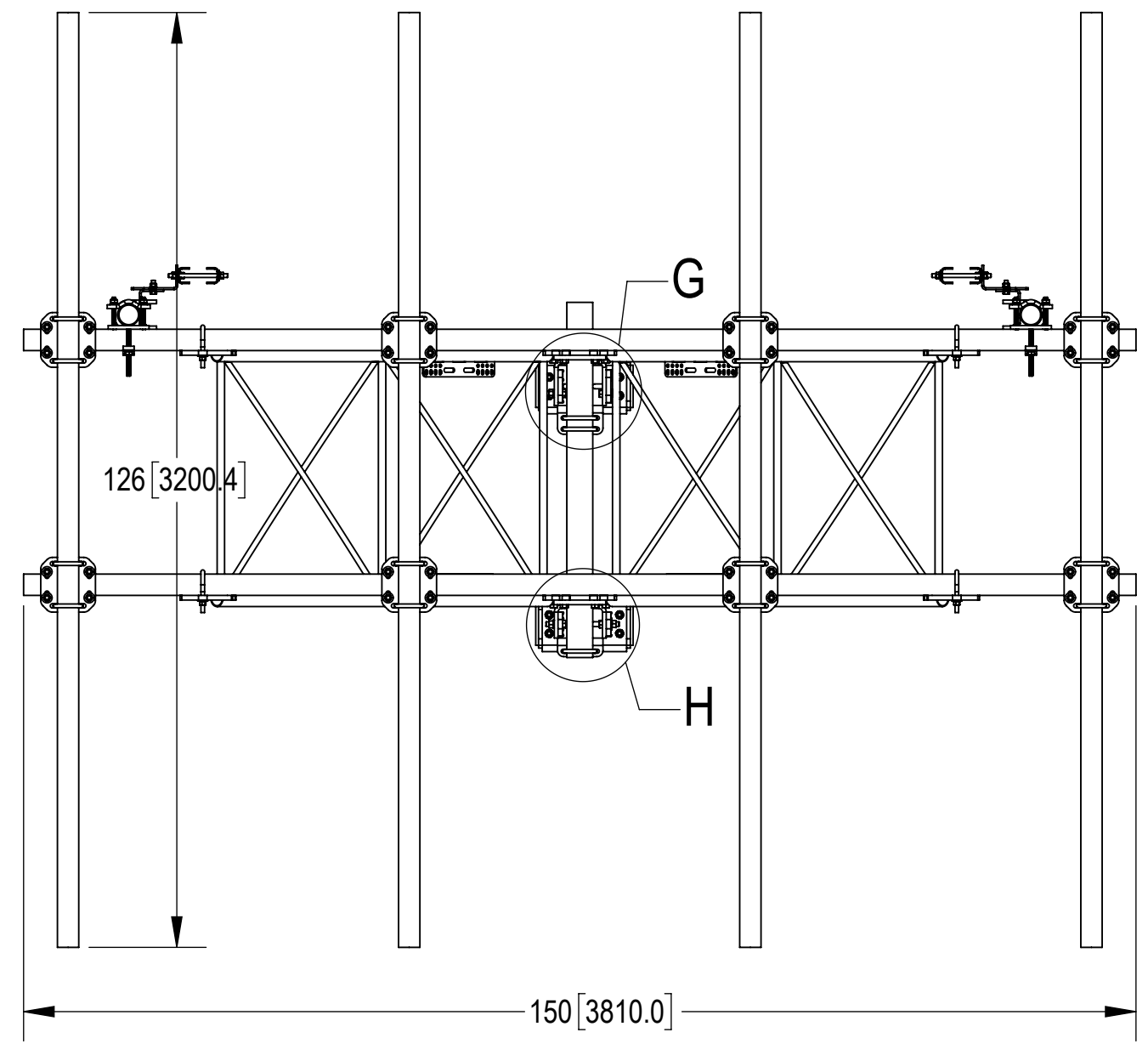
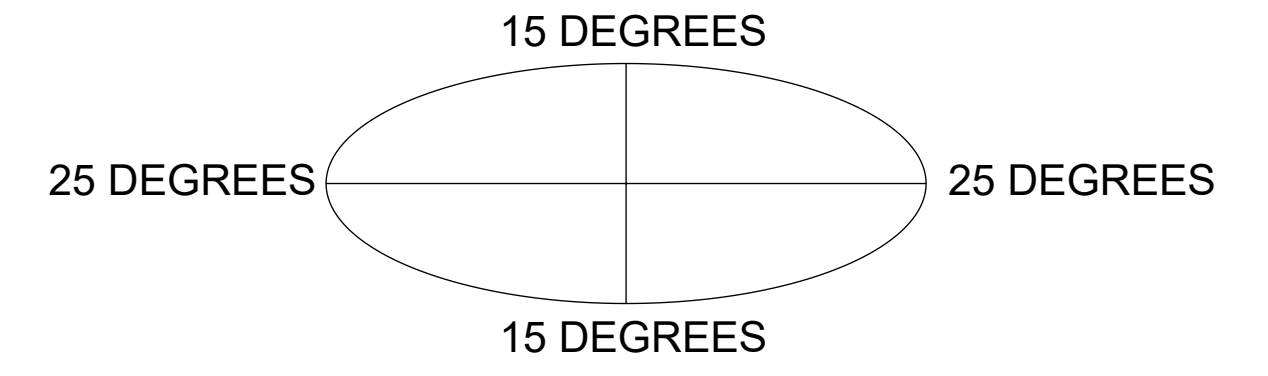
3

2

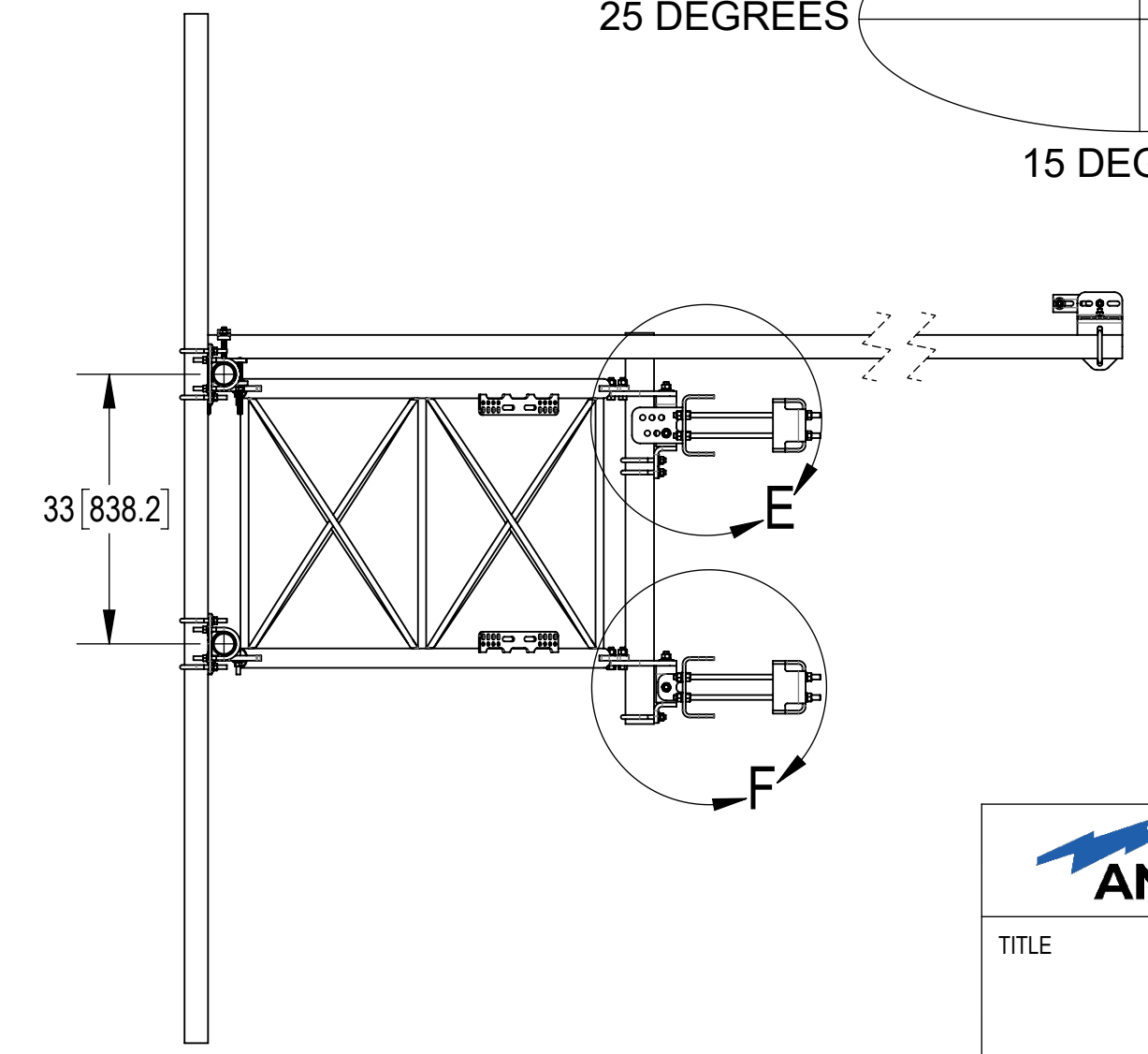
1



**ALLOWABLE TIEBACK ANGLE**  
+15 DEGREES VERTICAL  
±25 DEGREES HORIZONTAL



TOP  
↑  
↓  
BOTTOM



TITLE		SF, 12'FP, (4)126"AP		
SIZE	SCALE	DOCUMENT NO.		
<b>C</b>	<b>1:22</b>	SFG22HDXL-12-4-126		
		DRAWING		SHEET
		VERSION	STATUS	REVISION
		00	RE	A
				3 OF 6

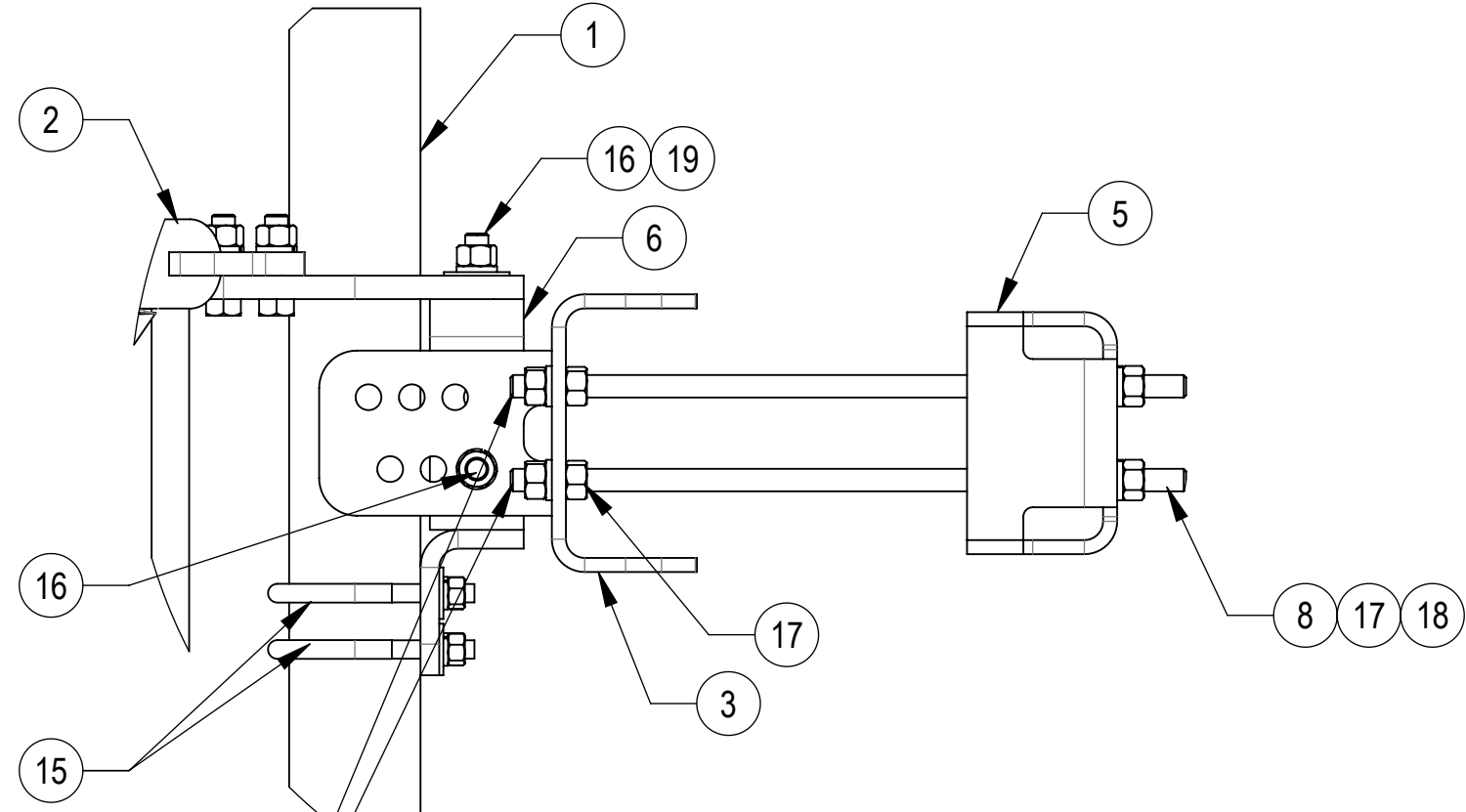
Confidential

4

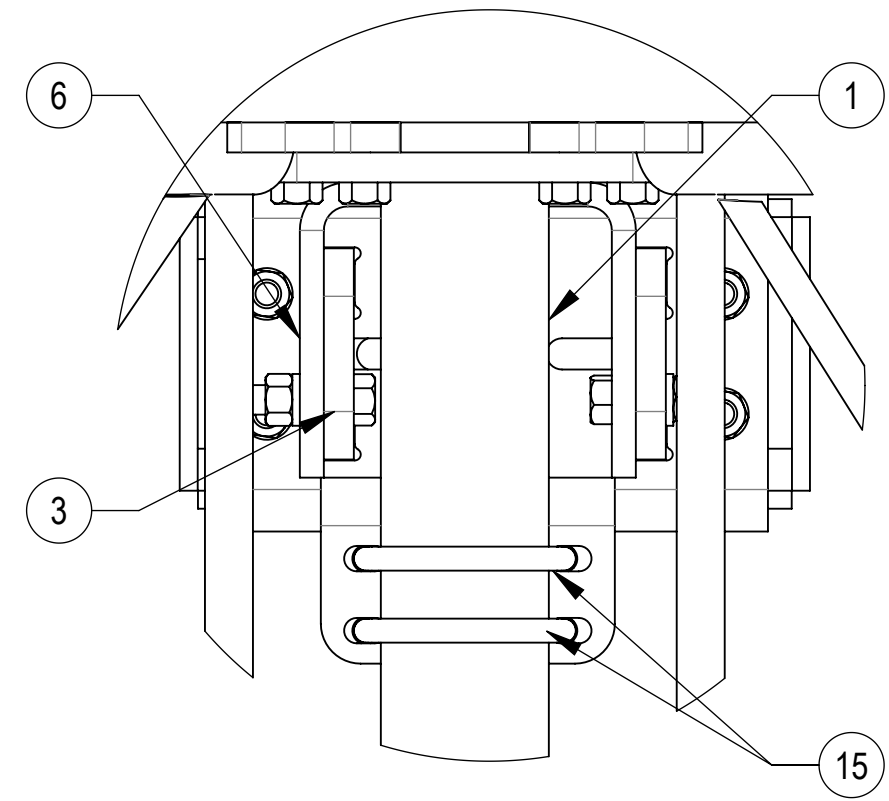
3

2

1

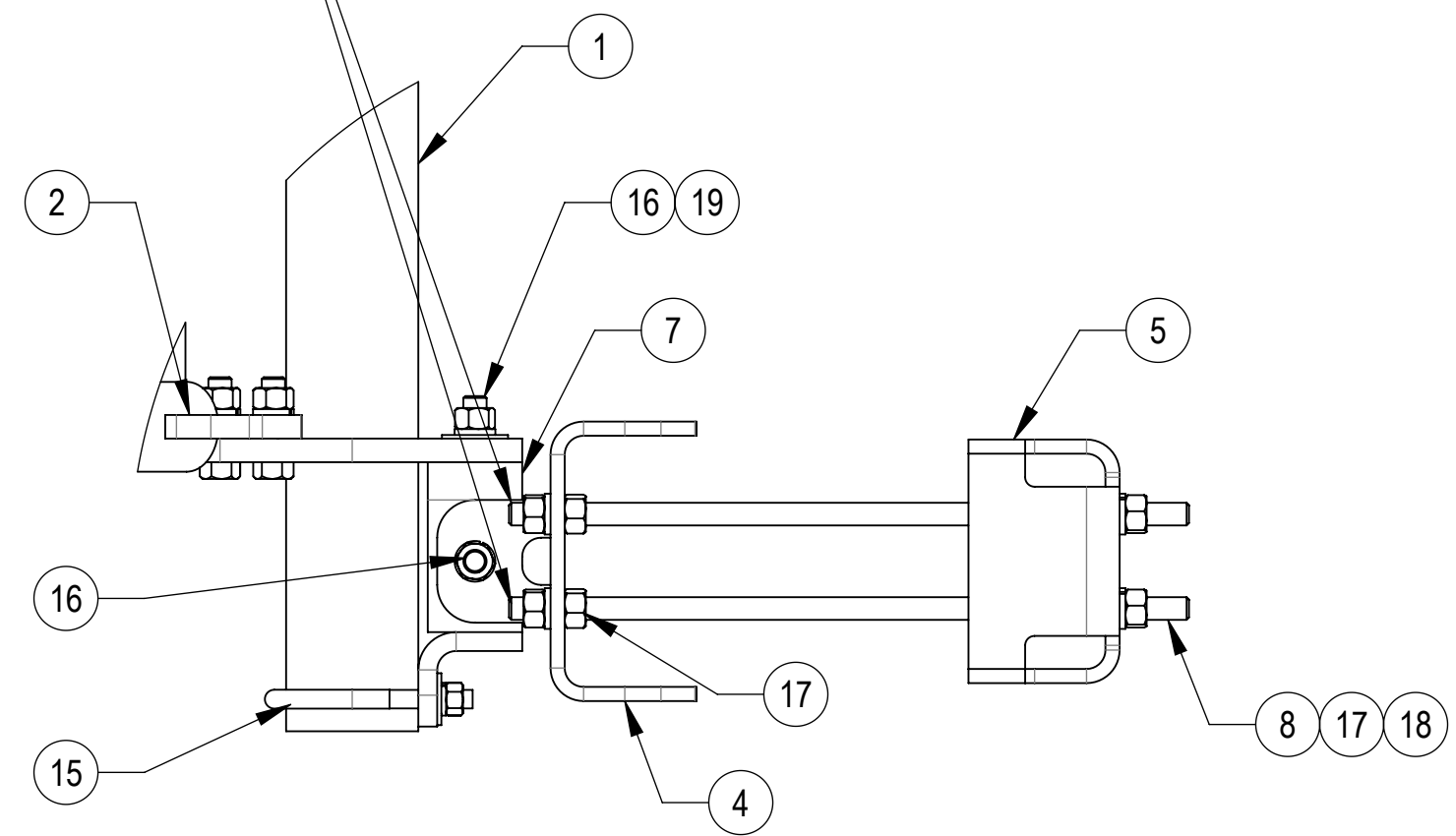


**DETAIL E**  
SCALE 1 : 5

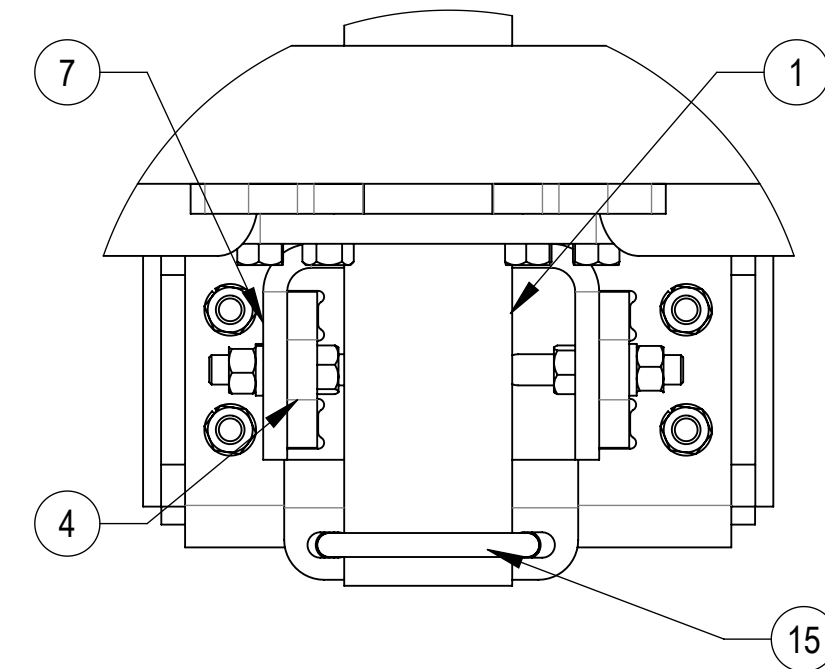


**DETAIL G**  
SCALE 1 : 4

THE THREADED ROD CAN ONLY EXPOSE 4 TO 7 THREADS ON ONE SIDE OF THE BRACKET, WHICH IS TO PREVENT INTERFERENCE WITH THE SIDE BOLTS


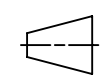


**DETAIL F**  
SCALE 1 : 5



**DETAIL H**  
SCALE 1 : 4



TITLE		SF, 12'FP, (4)126"AP			
SIZE	SCALE	DOCUMENT NO.			
<b>C</b>	<b>1:22</b>	SFG22HDXL-12-4-126			
 		DRAWING			SHEET 4 OF 6
		VERSION	STATUS	REVISION	
Confidential		00	RE	A	

4

3

2

1

D

D

C

C

B

B

A

A

4

3

2

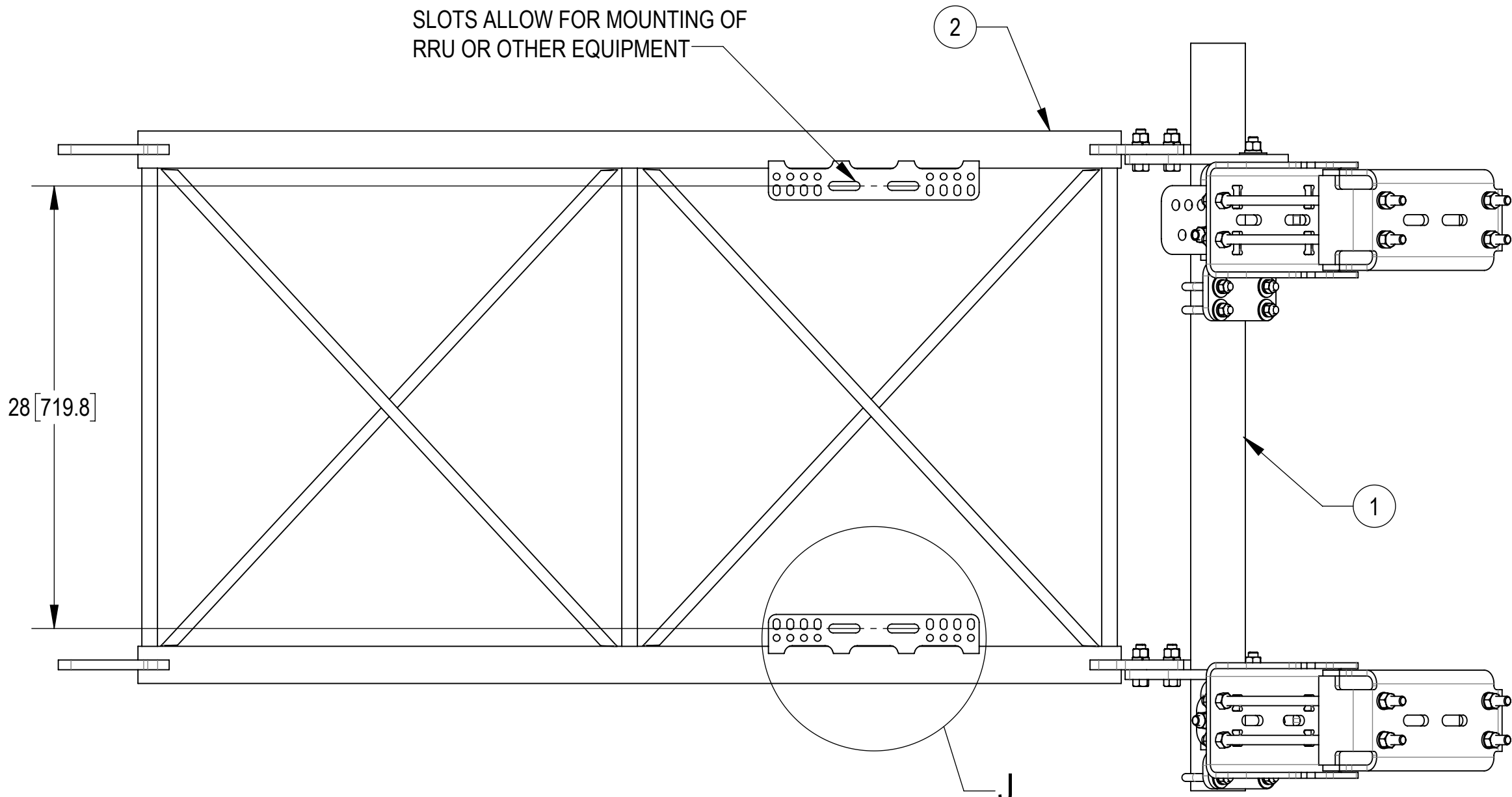
1

D

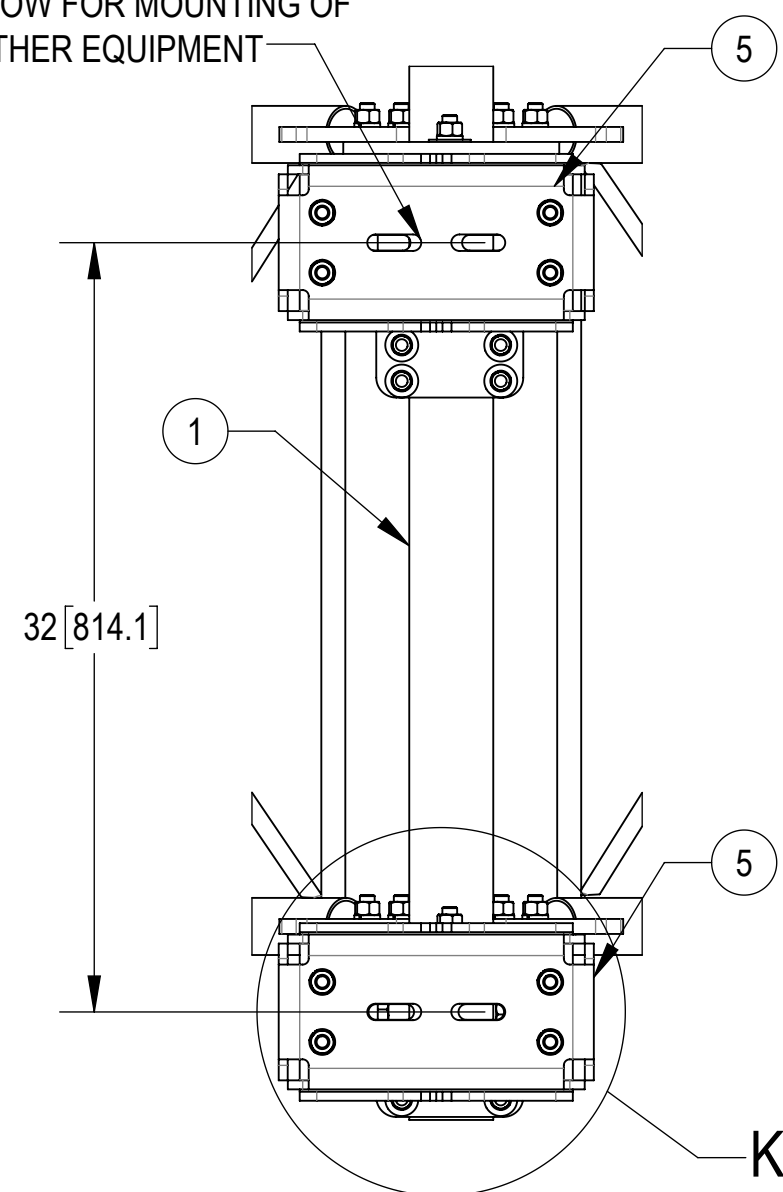
D

SLOTS ALLOW FOR MOUNTING OF RRU OR OTHER EQUIPMENT

SLOTS ALLOW FOR MOUNTING OF RRU OR OTHER EQUIPMENT



28 [719.8]



32 [814.1]

**SIDE VIEW**

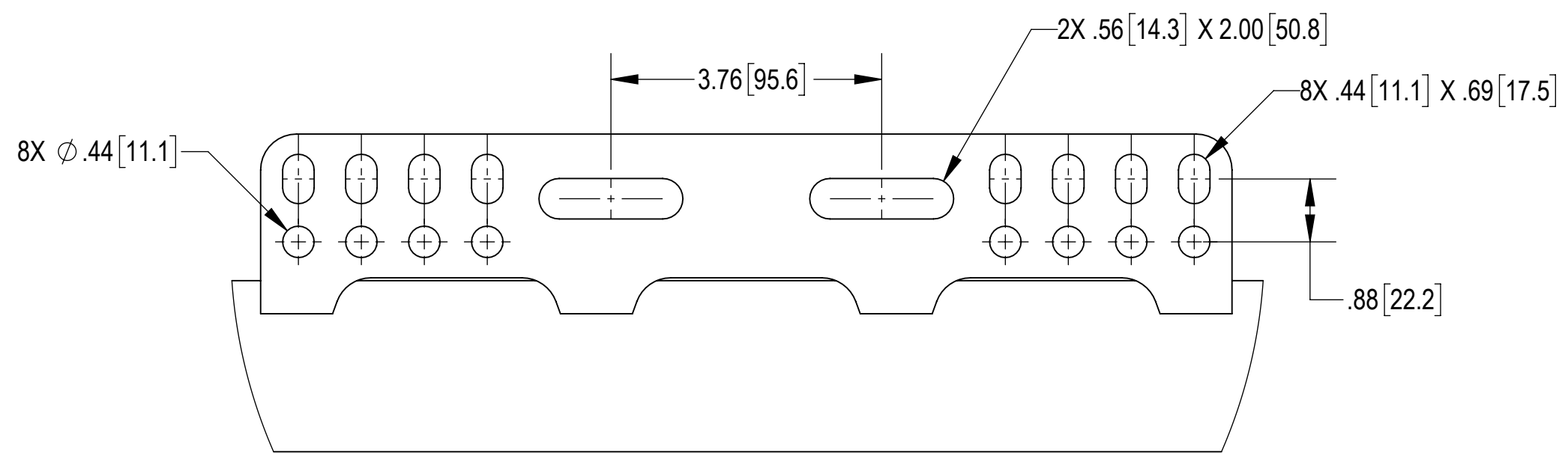
**BACK CROP VIEW**

C

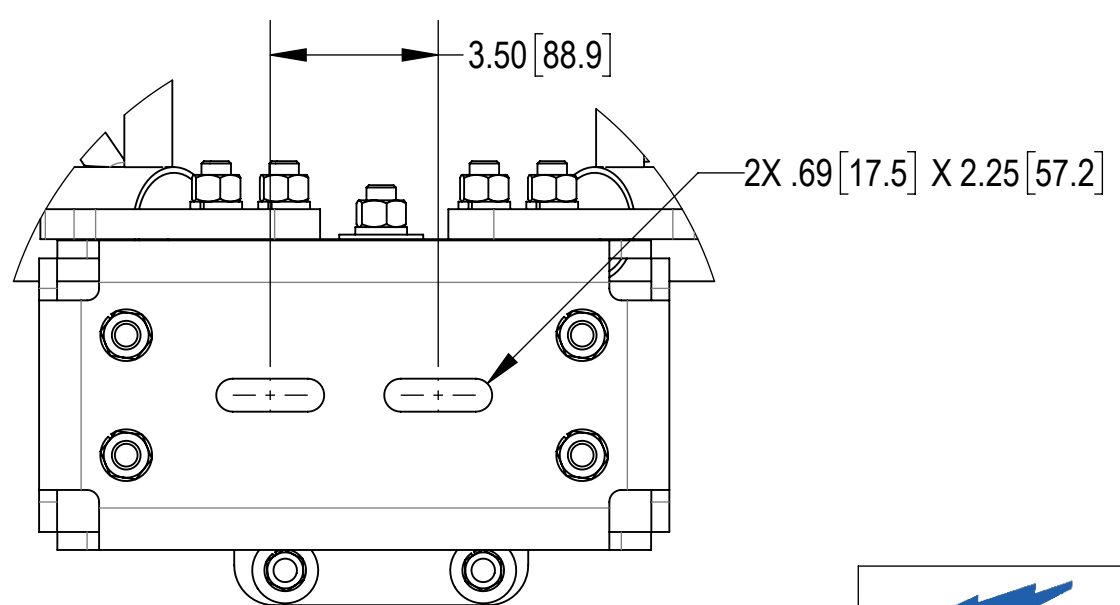
C

B

B



**DETAIL J**  
SCALE 1 : 2



**DETAIL K**  
SCALE 1 : 4

A

A



TITLE  
SF, 12'FP, (4)126"AP

SIZE <b>C</b>	SCALE <b>1:32</b>	DOCUMENT NO. SFG22HDXL-12-4-126
------------------	----------------------	------------------------------------

DRAWING			SHEET 5 OF 6
VERSION 00	STATUS RE	REVISION A	

Confidential

4

3

2

1

4

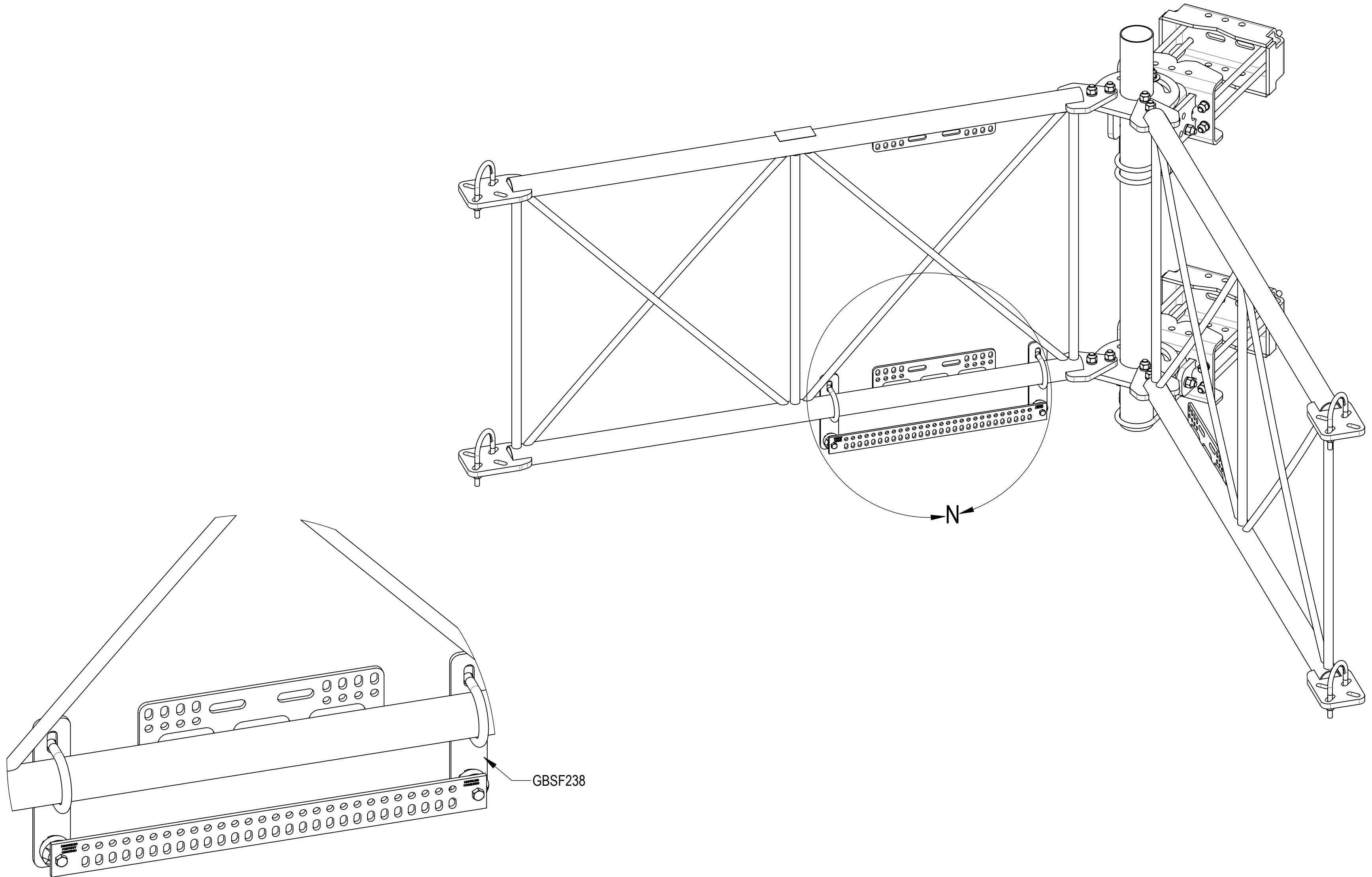
3

2

1

**OPTIONAL ACCESSORIES:**

BUS BAR MOUNT KIT GBSF238 IS WELL SUITED TO BE USED SHOULD THE NEED ARISE  
NOTE THAT THIS KIT DOES NOT INCLUDE THE ISOLATORS OR BUS BAR



**DETAIL N**  
SCALE 1 : 4



TITLE		SF, 12'FP, (4)126"AP		
SIZE	SCALE	DOCUMENT NO.		
<b>C</b>	<b>1:16</b>	SFG22HDXL-12-4-126		
	DRAWING			SHEET 6 OF 6
	VERSION	STATUS	REVISION	
	00	RE	A	

Confidential

4

3

2

1