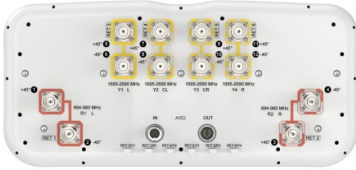


RRV4-65A-R6NV3



12-port sector antenna, 4x 694–960, 8x 1695–2690 MHz, 65° HPBW, 6x RET



- High radiation and pattern efficiency for improved coverage area, capacity or reduced power consumption for a given area
- Reduces the amount of aluminum used to minimize CO2 release
- Innovative aerodynamic shape optimized for reduced wind loading in every direction
- SEED® antenna providing high gain and improved efficiency

General Specifications

Antenna Type	Sector
Band	Multiband
Grounding Type	RF connector inner conductor and body grounded to reflector and mounting bracket
Performance Note	Outdoor usage
RF Connector Interface	4.3-10 Female
RF Connector Location	Bottom
RF Connector Quantity, mid band	8
RF Connector Quantity, low band	4
RF Connector Quantity, total	12

Remote Electrical Tilt (RET) Information

RET Hardware	CommRET v2
RET Interface	8-pin DIN Female 8-pin DIN Male
RET Interface, quantity	1 female 1 male
Input Voltage	10–30 Vdc
Internal RET	Low band (2) Mid band (4)
Power Consumption, active state, maximum	10 W
Power Consumption, idle state, maximum	2 W
Protocol	3GPP/AISG 2.0 (Single RET)

Dimensions

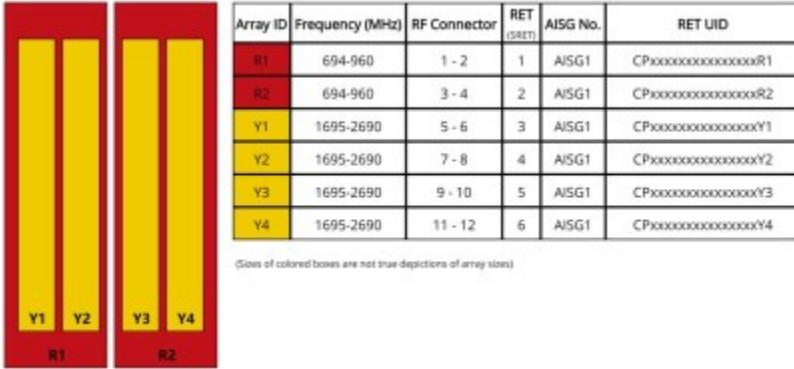
Width	430 mm 16.929 in
Depth	197 mm 7.756 in

RRV4-65A-R6NV3

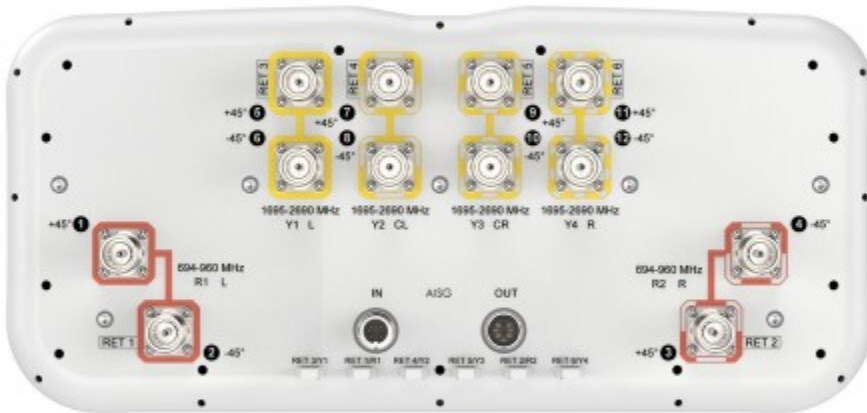
Length 1599 mm | 62.953 in

Net Weight, without mounting kit 31.5 kg | 69.446 lb

Array Layout



Port Configuration



RRV4-65A-R6NV3

Electrical Specifications

Impedance	50 ohm
Operating Frequency Band	1695 – 2690 MHz 694 – 960 MHz
Polarization	±45°
Total Input Power, maximum	1,200 W @ 50 °C

Electrical Specifications

	R1,R2	R1,R2	R1,R2
Frequency Band, MHz	698–806	790–894	890–960
RF Port	1-4	1-4	1-4
Gain at Mid Tilt, dBi	13.5	14	14.2
Beamwidth, Horizontal, degrees	66	59	53
Beamwidth, Vertical, degrees	13.3	12.2	11.3
Beam Tilt, degrees	2–16	2–16	2–16
USLS (First Lobe), dB	17	17	19
Front-to-Back Ratio at 180°, dB	26	27	26
CPR at Boresight, dB	21	22	21
Isolation, Cross Polarization, dB	25	25	25
Isolation, Inter-band, dB	25	25	25
VSWR Return loss, dB	1.5 14.0	1.5 14.0	1.5 14.0
PIM, 3rd Order, 2 x 20 W, dBc	-153	-153	-153
Input Power per Port at 50°C, maximum, watts	300	300	300

Electrical Specifications

	Y1,Y2,Y3,Y4	Y1,Y2,Y3,Y4	Y1,Y2,Y3,Y4	Y1,Y2,Y3,Y4
Frequency Band, MHz	1695–1995	1920–2300	2300–2500	2490–2690
RF Port	5-12	5-12	5-12	5-12
Gain at Mid Tilt, dBi	17	17.8	18.8	19.1
Beamwidth, Horizontal, degrees	74	70	64	60
Beamwidth, Vertical, degrees	6.5	5.9	5.1	4.7
Beam Tilt, degrees	2–12	2–12	2–12	2–12
USLS (First Lobe), dB	15	15	14	19
Front-to-Back Ratio at 180°, dB	30	31	33	33
CPR at Boresight, dB	22	19	18	18

RRV4-65A-R6NV3

Isolation, Cross Polarization, dB	25	25	25	25
Isolation, Inter-band, dB	25	25	25	25
VSWR Return loss, dB	1.5 14.0	1.5 14.0	1.5 14.0	1.5 14.0
PIM, 3rd Order, 2 x 20 W, dBc	-153	-153	-153	-153
Input Power per Port at 50°C, maximum, watts	250	250	200	200

Mechanical Specifications

BASTA Version, mechanical	BASTA v12
Wind Loading @ Velocity, frontal	376.0 N @ 150 km/h (84.5 lbf @ 150 km/h)
Wind Loading @ Velocity, lateral	203.0 N @ 150 km/h (45.6 lbf @ 150 km/h)
Wind Loading @ Velocity, maximum	594.0 N @ 150 km/h (133.5 lbf @ 150 km/h)
Wind Loading @ Velocity, rear	243.0 N @ 150 km/h (54.6 lbf @ 150 km/h)
Wind Speed, maximum	241 km/h (150 mph)

Packaging and Weights

Width, packed	530 mm 20.866 in
Depth, packed	349 mm 13.74 in
Length, packed	1771 mm 69.724 in
Weight, gross	40.5 kg 89.287 lb

Regulatory Compliance/Certifications

Agency	Classification
ISO 9001:2015	Designed, manufactured and/or distributed under this quality management system
UK-ROHS	Compliant

Included Products

BSAMNT-2F	-	Mounting bracket for cylindrical pipe installations (60-115mm pipe diameter) for fix mechanical tilt applications.
-----------	---	--

* Footnotes

Performance Note	Severe environmental conditions may degrade optimum performance
-------------------------	---