

# RR3VV-6520B-R5



16-port sector/multibeam antenna, 4x 694–960 MHz 2x 65° HPBW and 12x 1695–2690 MHz 6x 20° HPBW, 5x RET

- All Internal RET actuators are connected in “Cascaded SRET” configuration
- Uses the 4.3-10 connector which is 40 percent smaller than the 7-16 DIN connector
- The three-beam array enables the configuration of up to nine sectors in mid bands in a regular three faces site
- The 65° HPBW pattern in low band keeps the traditional three sector coverage layers in the sub 1 GHz bands

## General Specifications

<b>Antenna Type</b>	Multibeam
<b>Band</b>	Multiband
<b>Color</b>	Light Gray (RAL 7035)
<b>Grounding Type</b>	RF connector inner conductor and body grounded to reflector and mounting bracket
<b>Performance Note</b>	Outdoor usage
<b>Radome Material</b>	Fiberglass, UV resistant
<b>Radiator Material</b>	Low loss circuit board
<b>Reflector Material</b>	Aluminum
<b>RF Connector Interface</b>	4.3-10 Female
<b>RF Connector Location</b>	Bottom
<b>RF Connector Quantity, mid band</b>	12
<b>RF Connector Quantity, low band</b>	4
<b>RF Connector Quantity, total</b>	16

## Remote Electrical Tilt (RET) Information

<b>RET Hardware</b>	CommRET v2
<b>RET Interface</b>	8-pin DIN Female   8-pin DIN Male
<b>RET Interface, quantity</b>	2 female   2 male
<b>Input Voltage</b>	10–30 Vdc
<b>Internal RET</b>	Low band (2)   Mid band (3)
<b>Power Consumption, active state, maximum</b>	8 W
<b>Power Consumption, idle state, maximum</b>	1 W

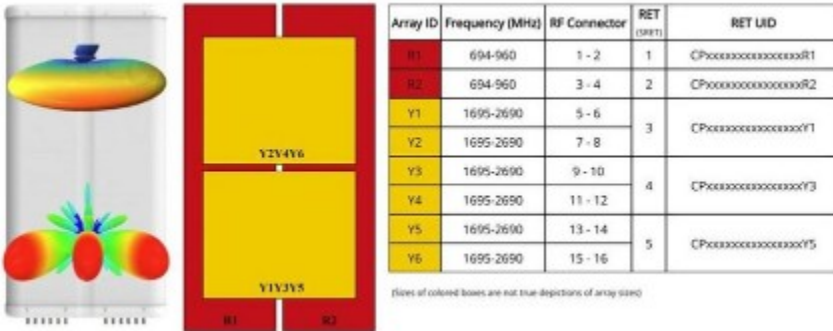
# RR3VV-6520B-R5

**Protocol** 3GPP/AISG 2.0 (Single RET)

## Dimensions

**Width** 498 mm | 19.606 in  
**Depth** 197 mm | 7.756 in  
**Length** 2100 mm | 82.677 in  
**Net Weight, antenna only** 49.3 kg | 108.688 lb

## Array Layout



## Port Configuration

# RR3VV-6520B-R5



## Electrical Specifications

<b>Impedance</b>	50 ohm
<b>Operating Frequency Band</b>	1695 – 2690 MHz   694 – 960 MHz
<b>Polarization</b>	±45°
<b>Total Input Power, maximum</b>	1,400 W

## Electrical Specifications

	<b>R1-R2</b>	<b>R1-R2</b>	<b>R1-R2</b>	<b>Y1-Y6</b>	<b>Y1-Y6</b>	<b>Y1-Y6</b>	<b>Y1-Y6</b>
<b>Frequency Band, MHz</b>	<b>698-790</b>	<b>790-890</b>	<b>890-960</b>	<b>1710-1990</b>	<b>1920-2180</b>	<b>2300-2500</b>	<b>2500-2690</b>
<b>RF Port</b>	1-4	1-4	1-4	5-16	5-16	5-16	5-16
<b>Beam Centers, Horizontal, degrees</b>				±0 ±35	±0 ±35	±0 ±35	±0 ±35
<b>Beamwidth, Horizontal, degrees</b>	69	66	67	23	22	19	16
<b>Beamwidth, Vertical, degrees</b>	10.6	9.5	8.6	9.5	8.8	7.5	7
<b>Beam Tilt, degrees</b>	2-12	2-12	2-12	2-12	2-12	2-12	2-12
<b>USLS (First Lobe), dB</b>	15	16	16	17	18	16	15

# RR3VV-6520B-R5

<b>Front-to-Back Ratio at 180°, dB</b>	30	27	28	31	31	27	26
<b>CPR at Boresight, dB</b>	23	23	24	14	16	14	13
<b>Isolation, Cross Polarization, dB</b>	25	25	25	25	25	25	25
<b>Isolation, Inter-band, dB</b>	25	25	25	25	25	25	25
<b>VSWR   Return loss, dB</b>	1.5 14.0	1.5 14.0	1.5 14.0	1.5 14.0	1.5 14.0	1.5 14.0	1.5 14.0
<b>PIM, 3rd Order, 2 x 20 W, dBc</b>	-150	-150	-150	-150	-150	-150	-150
<b>Input Power per Port, maximum, watts</b>	250	250	250	200	200	200	200

## Mechanical Specifications

<b>Effective Projective Area (EPA), frontal</b>	0.68 m <sup>2</sup>   7.319 ft <sup>2</sup>
<b>Effective Projective Area (EPA), lateral</b>	0.21 m <sup>2</sup>   2.26 ft <sup>2</sup>
<b>Wind Loading @ Velocity, frontal</b>	728.0 N @ 150 km/h (163.7 lbf @ 150 km/h)
<b>Wind Loading @ Velocity, lateral</b>	223.0 N @ 150 km/h (50.1 lbf @ 150 km/h)
<b>Wind Loading @ Velocity, maximum</b>	873.0 N @ 150 km/h (196.3 lbf @ 150 km/h)
<b>Wind Loading @ Velocity, rear</b>	501.0 N @ 150 km/h (112.6 lbf @ 150 km/h)
<b>Wind Speed, maximum</b>	241 km/h (150 mph)

## Packaging and Weights

<b>Width, packed</b>	565 mm   22.244 in
<b>Depth, packed</b>	309 mm   12.165 in
<b>Length, packed</b>	2287 mm   90.039 in
<b>Weight, gross</b>	63.8 kg   140.655 lb

## Regulatory Compliance/Certifications

Agency	Classification
ISO 9001:2015	Designed, manufactured and/or distributed under this quality management system
UK-ROHS	Compliant

## Included Products

- BSAMNT-4 – Wide Profile Antenna Downtilt Mounting Kit for 2.4 - 4.5 in (60 - 115 mm) OD round members. Kit contains one scissor top bracket set and one bottom bracket set.

## \* Footnotes

# RR3VV-6520B-R5

---

**Performance Note**

Severe environmental conditions may degrade optimum performance



# BSAMNT-4



Wide Profile Antenna Downtilt Mounting Kit for 2.4 - 4.5 in (60 - 115 mm) OD round members. Kit contains one scissor top bracket set and one bottom bracket set.

## Product Classification

**Product Type** Downtilt mounting kit

## General Specifications

**Application** Outdoor

**Color** Silver

## Dimensions

**Compatible Diameter, maximum** 115 mm | 4.528 in

**Compatible Diameter, minimum** 60 mm | 2.362 in

**Weight, net** 6.5 kg | 14.33 lb

## Material Specifications

**Material Type** Galvanized steel

## Packaging and Weights

**Included** Brackets | Hardware

**Packaging quantity** 1

## Regulatory Compliance/Certifications

Agency	Classification
CHINA-ROHS	Below maximum concentration value
ISO 9001:2015	Designed, manufactured and/or distributed under this quality management system
REACH-SVHC	Compliant as per SVHC revision on <a href="http://www.andrew.com/ProductCompliance">www.andrew.com/ProductCompliance</a>
ROHS	Compliant
UK-ROHS	Compliant

