

N-65C-HG-R1



2-port Next Generation PerforMax™ Superior Coverage and Capacity sector antenna, 2x 698–896 MHz, 65° HPBW, 8 ft, 1x RET

- Antenna optimized for higher gain with superior radiation efficiency
- Superior patterns for enhanced interference mitigation resulting in improved SINR, higher throughput, and more capacity
- Powered by Andrew's SEED® technology (Sustainable Energy Efficient Design)
- Best in class PIM immunity
- Ideal 2T2R low band antenna for use with an FD mMIMO antenna

General Specifications

Antenna Type	Sector
Band	Single band
Color	Light Gray (RAL 7035)
Grounding Type	RF connector body grounded to reflector and mounting bracket
Performance Note	Outdoor usage
Radome Material	Fiberglass, UV resistant
Radiator Material	Copper Low loss circuit board
Reflector Material	Aluminum
RF Connector Interface	4.3-10 Female
RF Connector Location	Bottom
RF Connector Quantity, low band	2
RF Connector Quantity, total	2

Remote Electrical Tilt (RET) Information

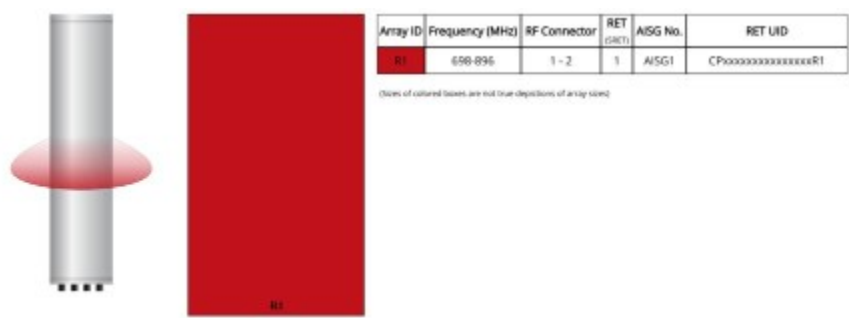
RET Hardware	CommRET v2
RET Interface	8-pin DIN Female 8-pin DIN Male
RET Interface, quantity	1 female 1 male
Input Voltage	10–30 Vdc
Internal RET	Low band (1)
Power Consumption, active state, maximum	10 W
Power Consumption, idle state, maximum	2 W
Protocol	3GPP/AISG 2.0 (Single RET)

N-65C-HG-R1

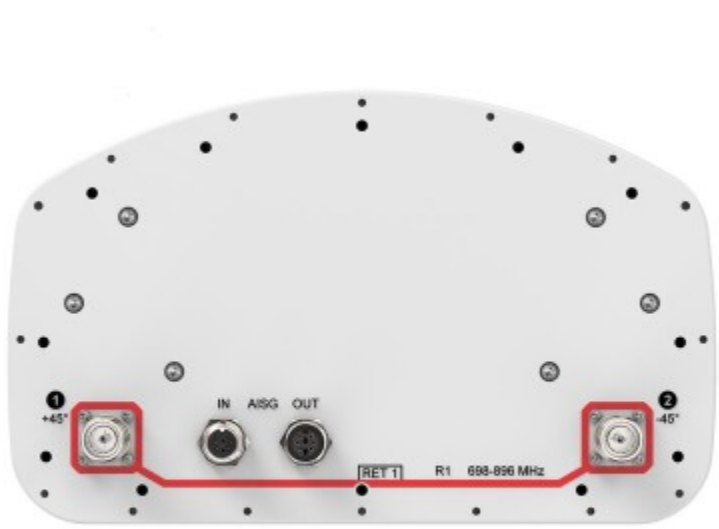
Dimensions

Width	301 mm 11.85 in
Depth	180 mm 7.087 in
Length	2438 mm 95.984 in
Net Weight, without mounting kit	19.7 kg 43.431 lb

Array Layout



Port Configuration



Electrical Specifications

Impedance	50 ohm
Operating Frequency Band	698 – 896 MHz

N-65C-HG-R1

Polarization ±45°

Electrical Specifications

	R1	R1
Frequency Band, MHz	698–798	824–896
RF Port	1,2	1,2
Gain, Maximum, dBi	17.2	17.4
Gain, dBi	16.9	17.2
Beamwidth, Horizontal, degrees	67	62
Beamwidth, Vertical, degrees	8.9	7.8
Beam Tilt, degrees	0–11	0–11
USLS (First Lobe), dB	18	16
Front-to-Back Ratio at 180°, dB	32	32
Front-to-Back Total Power at 180° ± 30°, dB	27	26
CPR at Boresight, dB	22	18
Isolation, Cross Polarization, dB	25	25
VSWR Return loss, dB	1.5 14.0	1.5 14.0
PIM, 3rd Order, 2 x 20 W, dBc	-153	-153
Input Power per Port at 50°C, maximum, watts	300	300

Mechanical Specifications

Wind Loading @ Velocity, frontal	393.0 N @ 150 km/h (88.3 lbf @ 150 km/h)
Wind Loading @ Velocity, lateral	330.0 N @ 150 km/h (74.2 lbf @ 150 km/h)
Wind Loading @ Velocity, maximum	757.0 N @ 150 km/h (170.2 lbf @ 150 km/h)
Wind Loading @ Velocity, rear	398.0 N @ 150 km/h (89.5 lbf @ 150 km/h)
Wind Speed, maximum	241 km/h (150 mph)

Packaging and Weights

Width, packed	380 mm 14.961 in
Depth, packed	295 mm 11.614 in
Length, packed	2571 mm 101.221 in
Weight, gross	32.1 kg 70.768 lb

Regulatory Compliance/Certifications

Agency	Classification
--------	----------------

N-65C-HG-R1

ISO 9001:2015	Designed, manufactured and/or distributed under this quality management system
UK-ROHS	Compliant

Included Products

BSAMNT-3	–	Wide Profile Antenna Downtilt Mounting Kit for 2.4 - 4.5 in (60 - 115 mm) OD round members. Kit contains one scissor top bracket set and one bottom bracket set.
----------	---	--

* Footnotes

Performance Note	Severe environmental conditions may degrade optimum performance
-------------------------	---