

FPP-1U4SLOTS

1U empty Patch Panel for fiber management system

Bulletin 7865768 Revision A Page 1 of 2

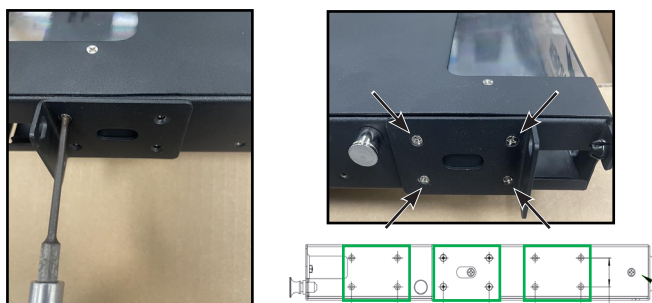
The FPP-1U4SLOTS is 1U empty Patch Panel for fiber management system that provides the function of trunk and jumper cable connection in the indoor controlled environment. The patch panel can work with MPO to LC cassettes and DLC adapter packs.

Fiber optic cables may be damaged if bent or curved to a radius that is less than the recommended minimum bend radius. Always observe the recommended bend radius limit when installing fiber optic cables and patch cords.

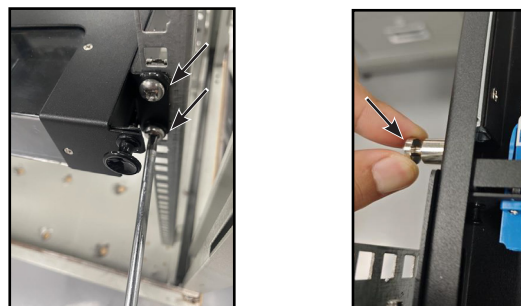
Exposure to laser radiation can seriously damage the retina of the eye. Do not look into the ends of any optical fiber. Do not assume the laser power is turned off or that the fiber is disconnected at the other end.



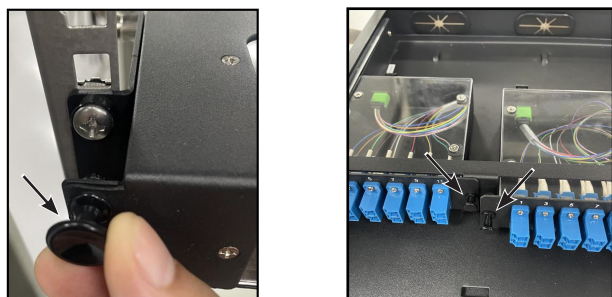
- 1** Pre-install the bracket on the panel with provided screws. Tighten these screws with recommended torque 0.7 N-m. The bracket is only recommended to be installed in the green line area.



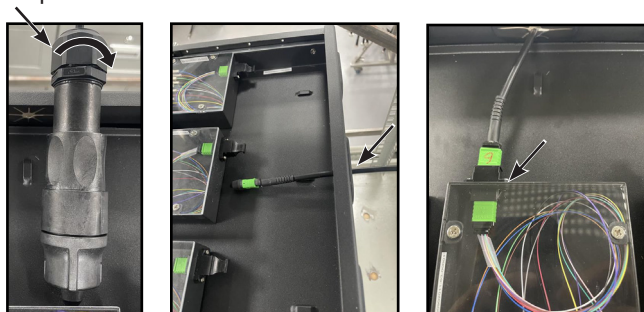
- 2** Pre-install the panel on the cabinet with provided screws. Tighten these screws with recommended torque 1.4 N-m. If the space is limited, pull the lock catch outward then you can push/pull the main body of the patch panel.



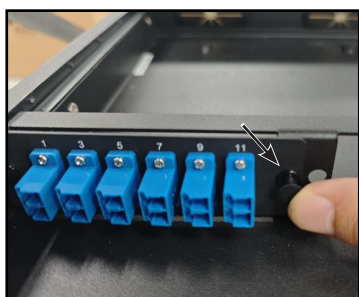
- 3** Pull outward on the top cover clips to unlock, then remove the cover. For MPO cassettes installations slide the cassettes into place and lock them on the panel by pressing in the clips.



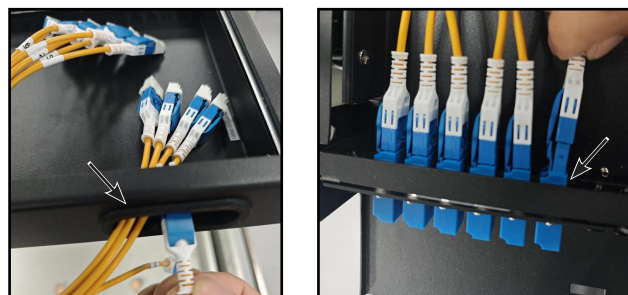
- 4** Remove the shroud from the fiber trunk cable by unscrewing the back nut exposing the MPO connector. Thread the MPO connector through the back hole of the panel and connect it to the MPO cassettes.



- 5** If you are deploying an Fiber Trunk and DLC adapter pack on the panel slide them into place and use the same locking method by pressing in the clips.



- 6** Thread the DLC connectors through the back hole of the panel and connect it to the DLC adapter pack.



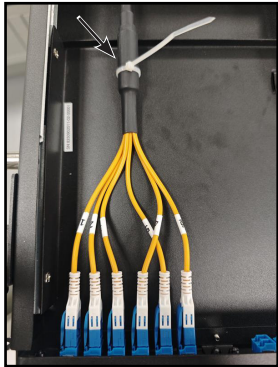
FPP-1U4SLOTS

1U empty Patch Panel for fiber management system

Bulletin 7865768 Revision A Page 2 of 2

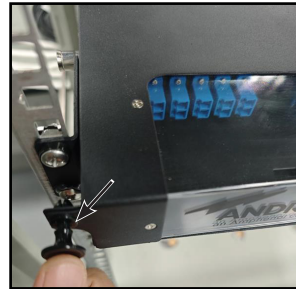
7

Ensure that the optical cable is slightly bent then tighten the plastic strips around the ridged trunk transition area to fix the cable to the base of the tray. Cut the extra length of the plastic strips.



8

Reinstall the panel top cover and press the clips to lock, the installation complete.



ANDREW an Amphenol company

2601 Telecom Parkway, Richardson, Texas, 75082, USA
www.andrew.com

Notice: ANDREW disclaims any liability or responsibility for the results of improper or unsafe installation, inspection, maintenance, or removal practices.

Aviso: ANDREW no acepta ninguna obligación ni responsabilidad como resultado de prácticas incorrectas o peligrosas de instalación, inspección, mantenimiento o retiro.

Avis: ANDREW décline toute responsabilité pour les conséquences de procédures d'installation, d'inspection, d'entretien ou de retrait incorrectes ou dangereuses.

Hinweis: ANDREW lehnt jede Haftung oder Verantwortung für Schäden ab, die aufgrund unsachgemäßer Installation, Überprüfung, Wartung oder Demontage auftreten.

Atenção: A ANDREW abdica do direito de toda responsabilidade pelos resultados de práticas inadequadas e sem segurança de instalação, inspeção, manutenção ou remoção.

Avvertenza: ANDREW declina eventuali responsabilità derivanti dall'esecuzione di procedure di installazione, ispezione, manutenzione e smontaggio improprie o poco sicure.

注意: ANDREW 公司申明對於不恰當或不安全的安裝、檢驗、維修或拆卸操作所導致的後果不負責任 何義務和責任

Technical Support

+1 888 297 6433, Option 3 (Toll Free US and Canada)
awpnarsupport@andrew.com