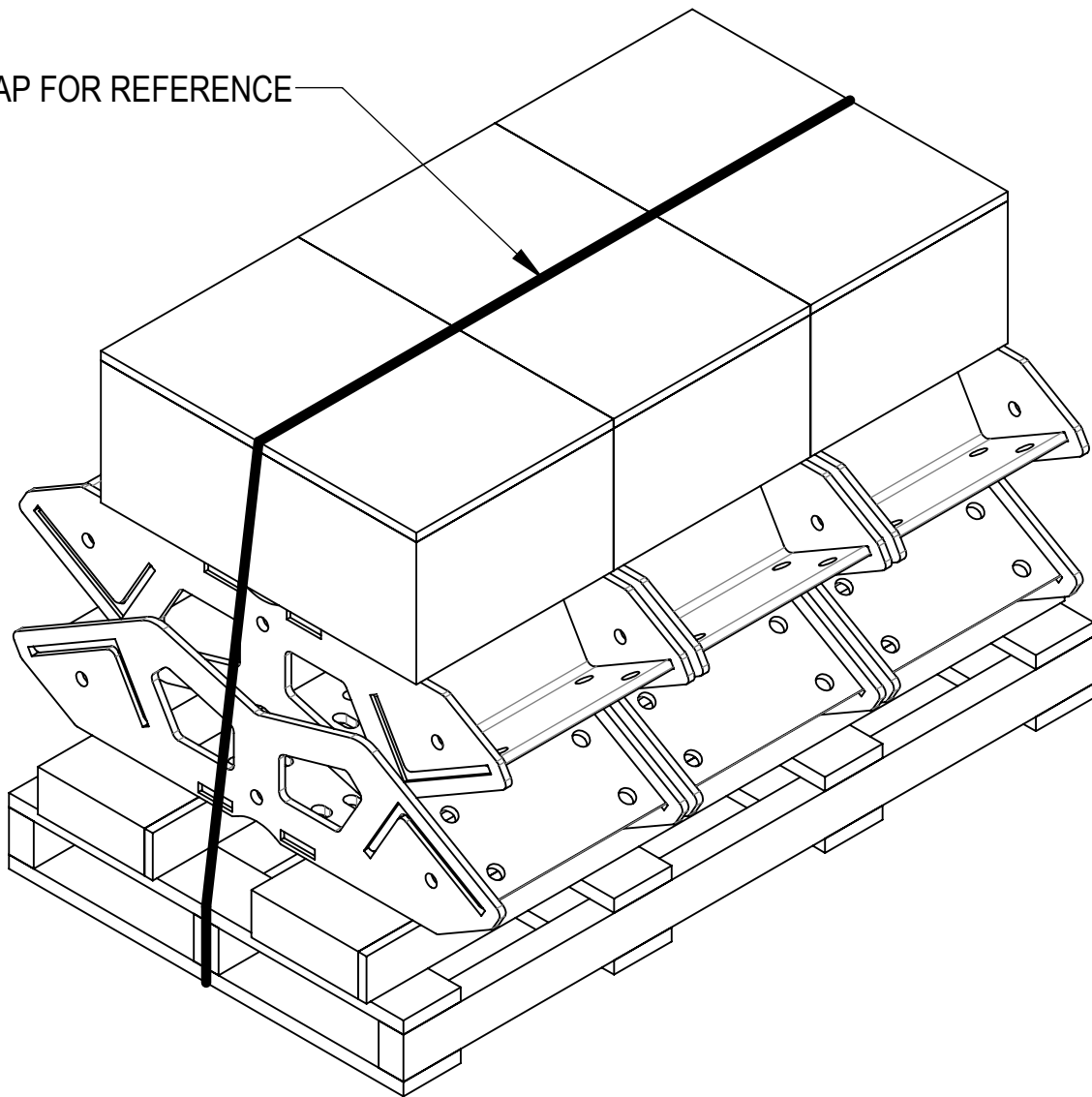



- 4
- 3
- 2
- 1
- 1.0 GENERAL NOTES
- 1.1 ALL METRIC DIMENSIONS ARE IN BRACKETS [X. X]
- 1.2 FOR PATENT INFO: <https://www.adwpat.com>
- 2.0 DESIGN NOTES
- 2.1 ANY HAZARDS OR OBSTRUCTIONS TO THE CLIMBING FACILITY AND SAFETY CLIMB MUST BE IDENTIFIED PRIOR TO INSTALLING THE APPURTENANCE. ADDITIONAL PRODUCTS MAY BE REQUIRED TO MAINTAIN THE INTEGRITY OF THE SAFETY CLIMB. DURING INSTALLATION, TEMPORARY AND/OR PERMANENT PRECAUTIONARY MEASURES SHOULD BE TAKEN TO PRESERVE THE CLIMBING FACILITY AND/OR SAFETY CLIMB.
- 2.2 FITS MONOPOLES 12" TO 50" OD.
- 2.3 UP TO 2.0° TAPER AVAILABLE ON MODELS THAT SUPPORT ADJUSTMENT
- 3.0 MANUFACTURING/SPECIAL REQUIREMENTS
- 3.1 TIGHTEN ALL BOLTS SECURING FLAT PLATES BY THE TURN-OF-NUT METHOD. TIGHTEN ALL U-BOLTS USING TURN-OF-NUT METHOD WITH ATTENTION TO LEAVE EQUAL DISTANCE AND EQUAL FORCE ON EACH LEG OF THE U-BOLT. ALL FASTENERS SHOULD BE TIGHTENED PER AISC 6.5.2
- 4.0 TEST
- 5.0 PACKAGING
- 5.1 PACKAGING SHALL MEET ANDREW REQUIREMENTS PER DOCUMENT IS-PL-3005
- 5.2 PRINTED DOCUMENT TO BE PLACED INSIDE POLYBAG AND THEN IN SHIPPING CONTAINER
- 5.3 EXTRA HARDWARE MAY BE SUPPLIED, BAGGED AND SHIPPED

REVISIONS			
REV.	DESCRIPTION	DATE	APPROVED
A	INITIAL RELEASE	YC1059 19SEP25	BA1025 50105033AMO

STRAP FOR REFERENCE



PACKAGING

**ANDREW**[®] an Amphenol company

TOLERANCES

1 PLACE .X[X] ± 0.2[6.3] 3 PLACE .XXX[X] ± 0.060[1.5]
2 PLACE .XX[X] ± 0.12[3.0] ANGLES ± 2°

SAP MATERIAL MASTER

SF-MONO-AMK-002

FINISH

MATERIAL

UNLESS OTHERWISE SPECIFIED
DIMENSIONS ARE IN INCHES
INTERPRET PER ANSI Y 14.5M-1994

NAME

DATE

TITLE

CE

YC1059

19SEP25

RW

AD

RE

ECN

50105033AMO

SCALE

DOCUMENT NO.

1:8

SF-MONO-AMK-002

DENSITY

MASS

VOLUME

SURFACE AREA

42.8"

55.7"

50.2"

lbs/in³

lbs

in³

in²

HEIGHT

LENGTH

WIDTH

42.8"

55.7"

50.2"

CONFIDENTIAL

SIZE

Auth Group

INSL

MODEL

VERSION

STATUS

REVISION

DRAWING

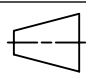
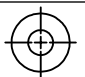
VERSION

STATUS

REVISION

SHEET

C



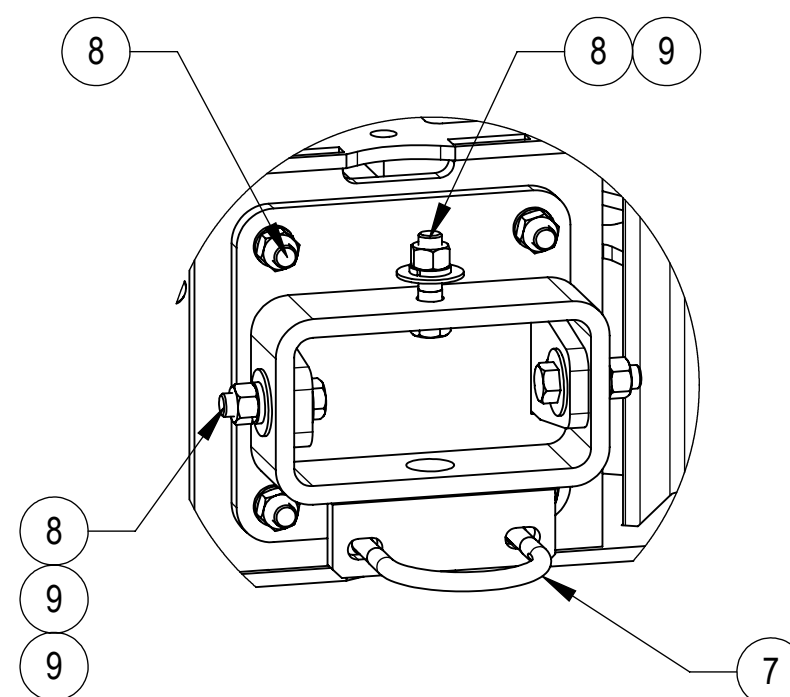
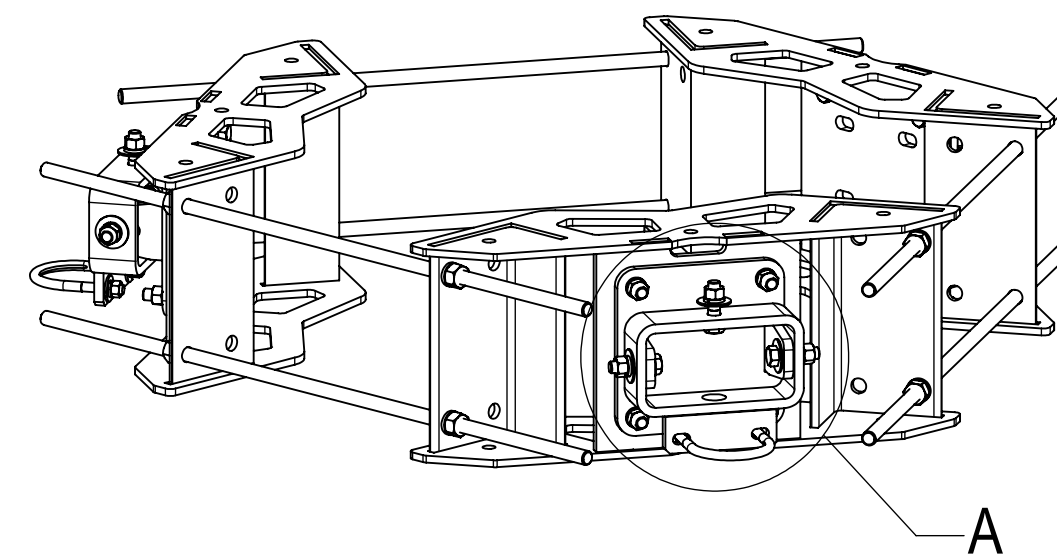
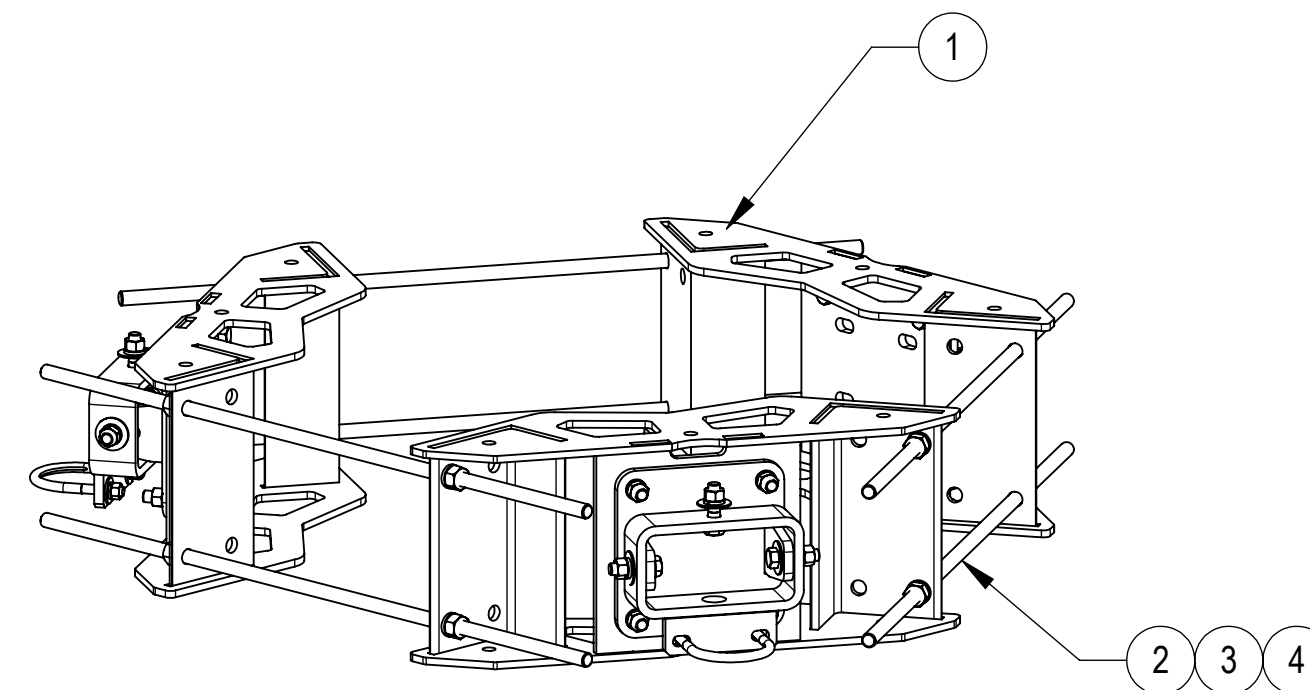
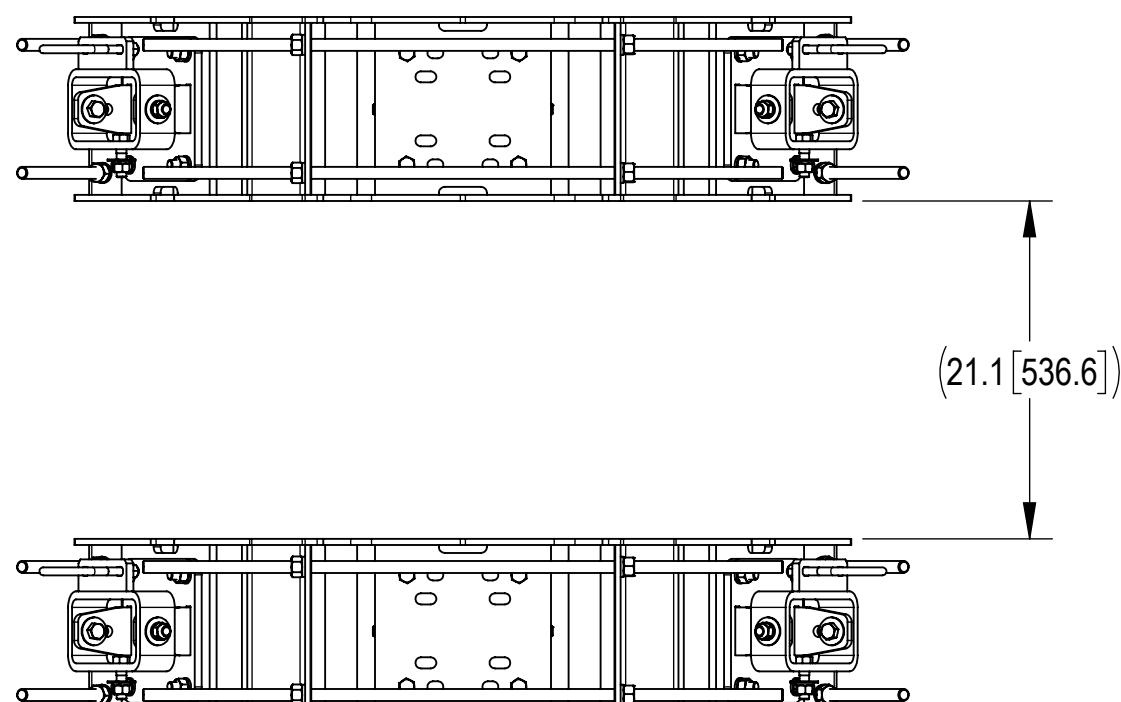
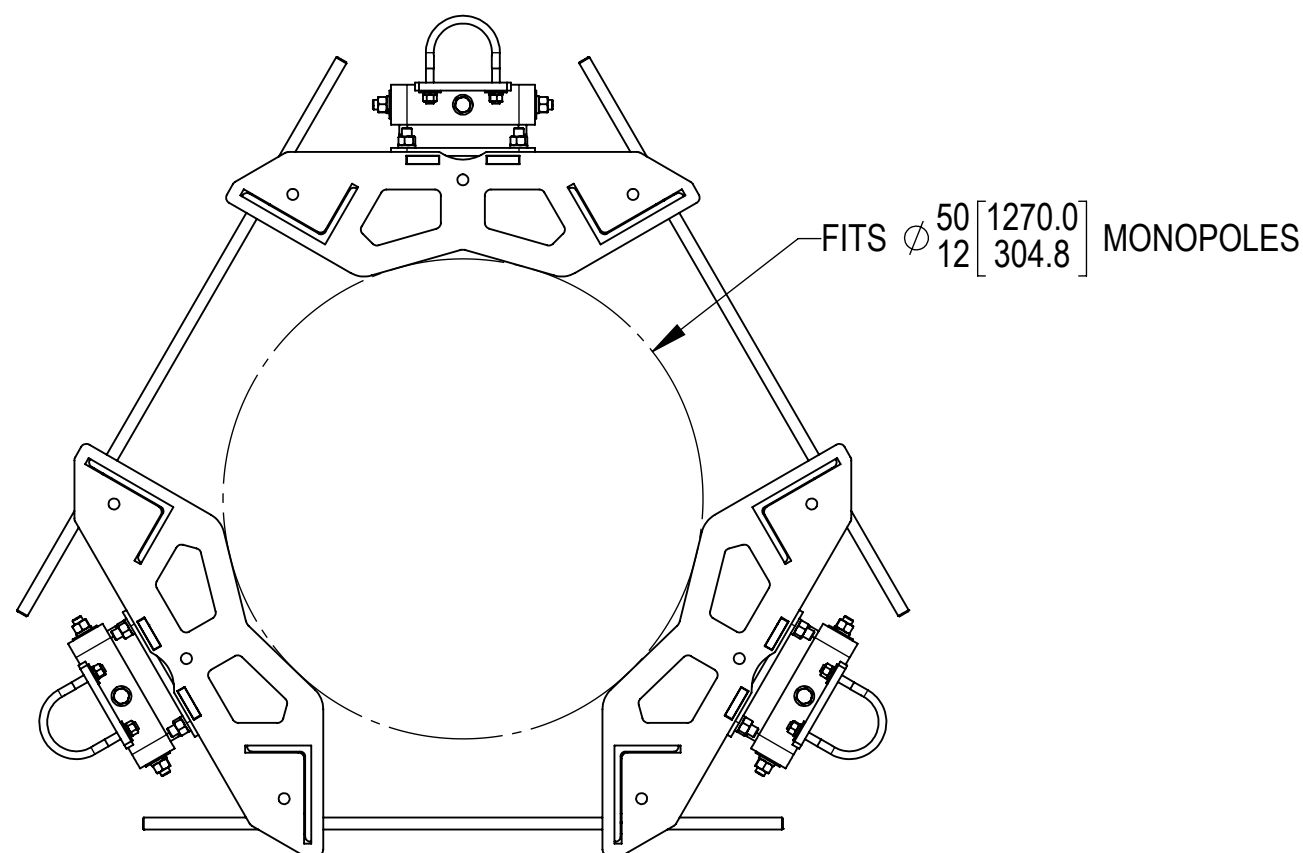
1

00

IW

A

1 OF 4



DETAIL A
SCALE 1 : 5

COMPONENT PART NUMBERS PROVIDED FOR ASSEMBLY PURPOSES;
INDIVIDUAL COMPONENTS MAY BE SHIPPED AS PARTS WITHIN AN INCLUDED KIT.

ITEM	PART NO.	DESCRIPTION	QTY.	WEIGHT	NOTE NO.
1	RM1550301	15"-50" 3 SECTOR RM WLDMNT	6	65.93 LBS	
2	MT38440	3/4" X 40" GALV THREADED ROD GRADE B7	12	4.98 LBS	
3	GN-06	3/4" GALV HEX NUT	24	0.15 LBS	
4	GWL-06	3/4" GALV LOCK WASHER	24	0.04 LBS	
5	SFG2389-00	TAPER ADJUSTMENT WELDMENT	6	13.37 LBS	
6	SFG2397-0500-00	SUPPORT, AZ TAPER BRACKET	6	9.92 LBS	
7	GUB-4355	1/2" X 3-5/8" X 5" GALV U-BOLT	6	0.71 LBS	
8	GB-05225	5/8" X 2-1/4" GALV BOLT KIT	42	0.28 LBS	
9	GWF-05	5/8" GALV FLAT WASHER, 1.70D	30	0.06 LBS	



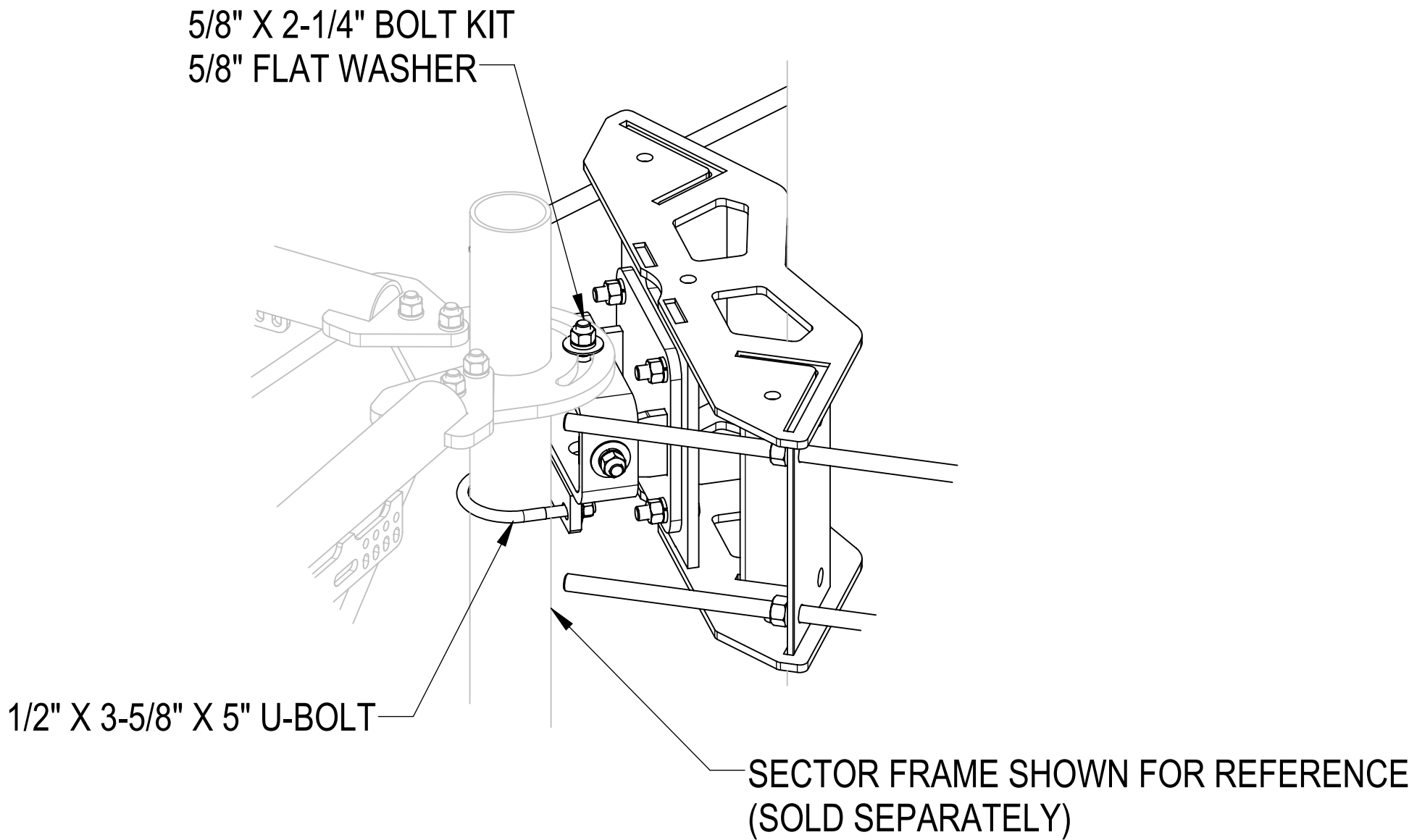
TITLE
RM AND TAPER BRACKET ASSEMBLY, DOUBLE

SIZE **C** SCALE **1:12** DOCUMENT NO. **SF-MONO-AMK-002**

DRAWING			SHEET 2 OF 4
VERSION	STATUS	REVISION	
00	IW	A	

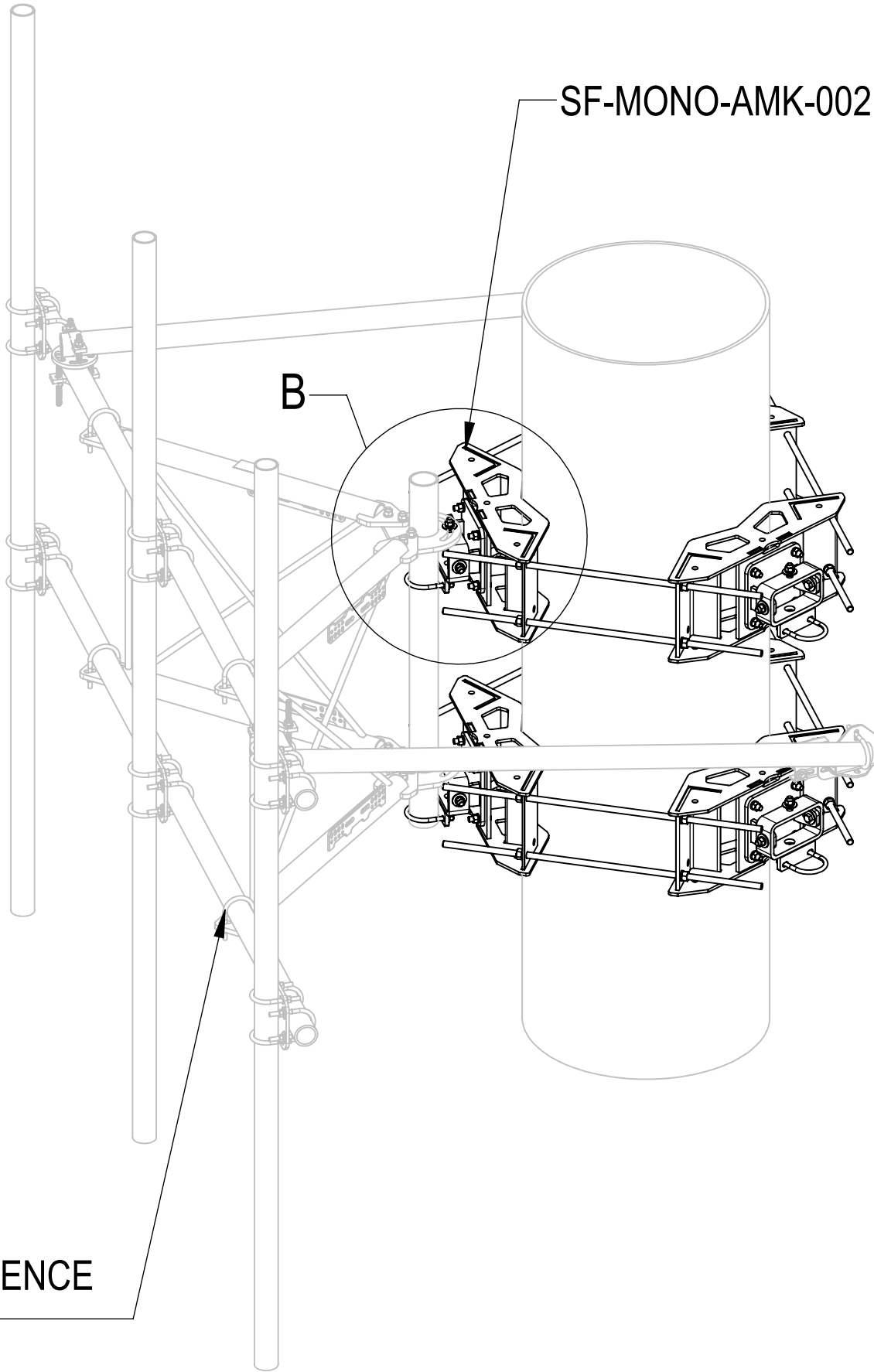
Confidential

ATTACHED WITH ONE SECTOR FRAME INSTALLATION
(SECTOR FRAME SOLD SEPARATELY)



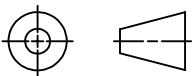
DETAIL B
SCALE 1 : 6

SECTOR FRAME SHOWN FOR REFERENCE
(SOLD SEPARATELY)



TITLE
RM AND TAPER BRACKET ASSEMBLY, DOUBLE

SIZE C	SCALE 1:18	DOCUMENT NO. SF-MONO-AMK-002
------------------	----------------------	---------------------------------

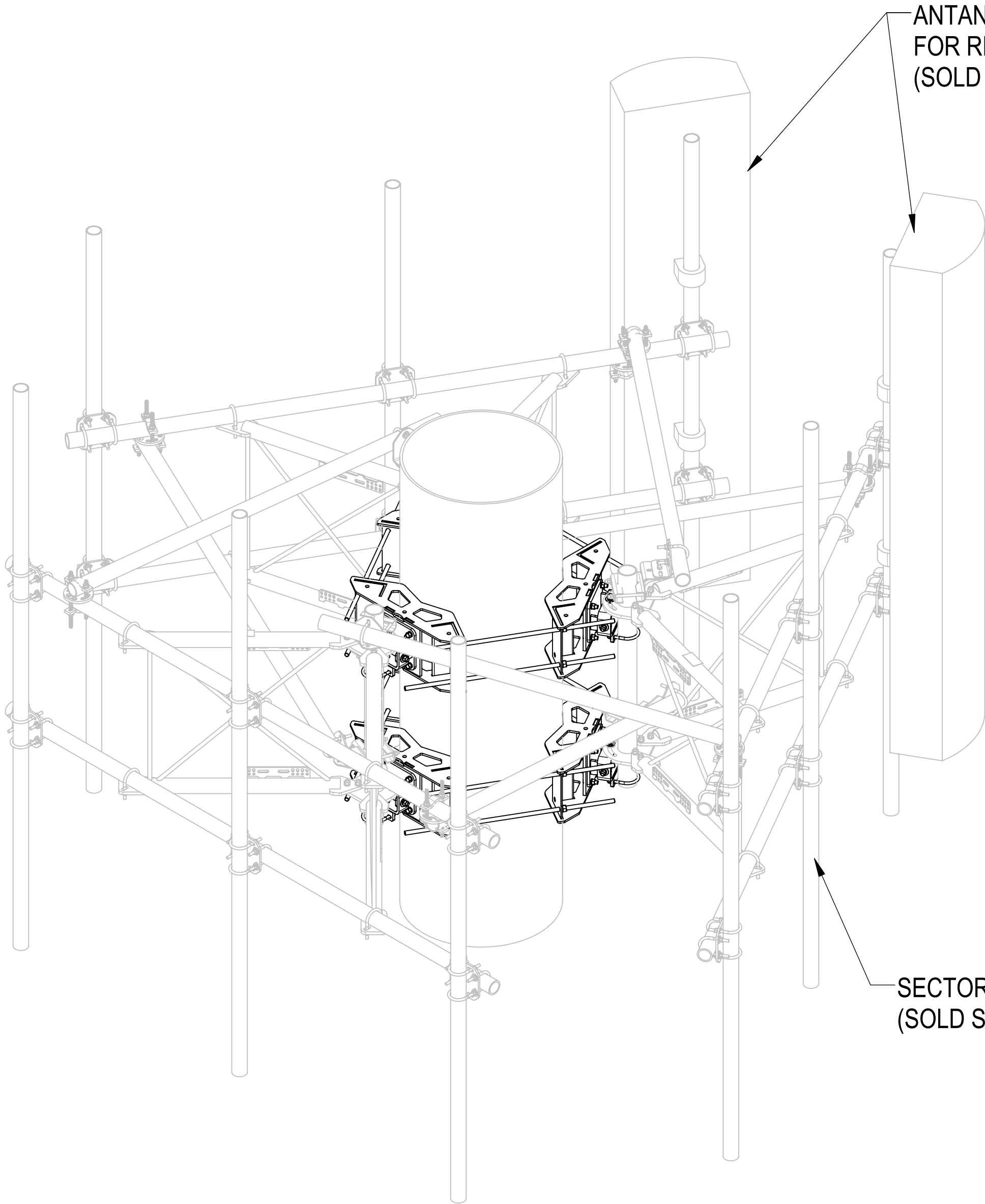


DRAWING		
VERSION 00	STATUS IW	REVISION A

SHEET
3 OF 4

Confidential

ATTACHED WITH SECTOR FRAMES VIEW
(SECTOR FRAMES SOLD SEPARATELY)



TITLE
RM AND TAPER BRACKET ASSEMBLY, DOUBLE

SIZE C	SCALE 1:32	DOCUMENT NO. SF-MONO-AMK-002
------------------	----------------------	---------------------------------



DRAWING			SHEET 4 OF 4
VERSION	STATUS	REVISION	
00	IW	A	

Confidential