

4

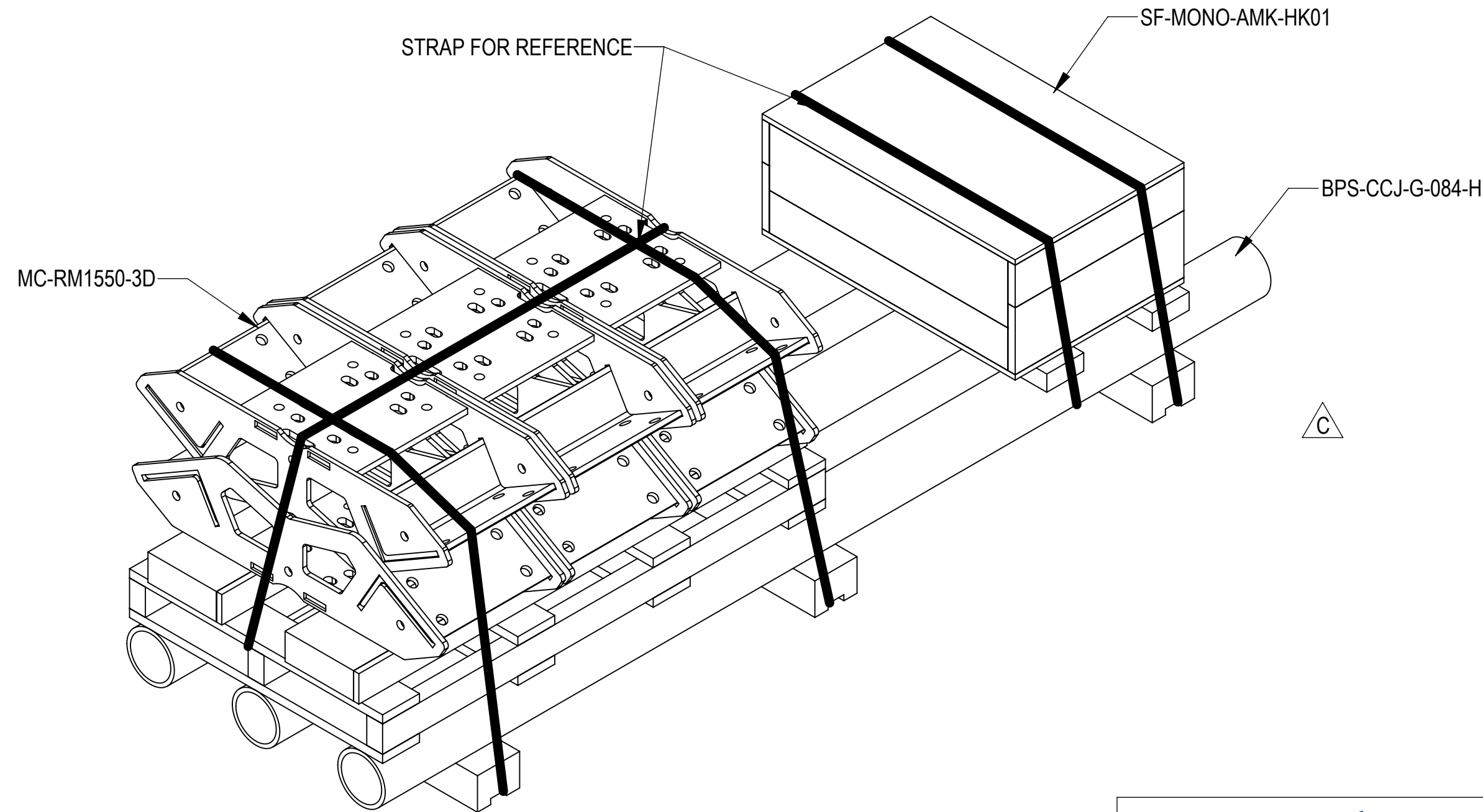
3


2

1

- 1.0 GENERAL NOTES
 - 1.1 ALL METRIC DIMENSIONS ARE IN BRACKETS [X. X]
 - 1.2 FOR PATENT INFO: <https://www.adwpat.com>
- 2.0 DESIGN NOTES
 - 2.1 ANY HAZARDS OR OBSTRUCTIONS TO THE CLIMBING FACILITY AND SAFETY CLIMB MUST BE IDENTIFIED PRIOR TO INSTALLING THE APPURTENANCE. ADDITIONAL PRODUCTS MAY BE REQUIRED TO MAINTAIN THE INTEGRITY OF THE SAFETY CLIMB. DURING INSTALLATION, TEMPORARY AND/OR PERMANENT PRECAUTIONARY MEASURES SHOULD BE TAKEN TO PRESERVE THE CLIMBING FACILITY AND/OR SAFETY CLIMB.
 - 2.2 FITS MONOPOLES 12" TO 50" OD.
- 3.0 MANUFACTURING/SPECIAL REQUIREMENTS
 - 3.1 TIGHTEN ALL BOLTS SECURING FLAT PLATES BY THE TURN-OF-NUT METHOD. TIGHTEN ALL U-BOLTS USING TURN-OF-NUT METHOD WITH ATTENTION TO LEAVE EQUAL DISTANCE AND EQUAL FORCE ON EACH LEG OF THE U-BOLT. ALL FASTENERS SHOULD BE TIGHTENED PER AISC 6.5.2
- 4.0 TEST
- 5.0 PACKAGING
 - 5.1 PACKAGING SHALL MEET ANDREW REQUIREMENTS PER DOCUMENT IS-PL-3005
 - 5.2 PRINTED DOCUMENT TO BE PLACED INSIDE POLYBAG AND THEN IN SHIPPING CONTAINER
 - 5.3 EXTRA HARDWARE MAY BE SUPPLIED, BAGGED AND SHIPPED

REVISIONS			
REV.	DESCRIPTION	DATE	APPROVED
A	INITIAL RELEASE	JL1183 24MAR25	YW1047 50102111AMO
B	UPDATED TO ANDREW FRAME; SHEET3: SHOWN TIE-BACK PIPE IN VIEW	JL1183 21APR25	YW1047 50102534AMO
C	UPDATED PACKAGING VIEW	JL1183 08MAY25	YW1047 50102785AMO





ANDREW® an Amphenol company

TOLERANCES		SAP MATERIAL MASTER						
1 PLACE .X[X] ± 0.2[6.3]	3 PLACE .XXX[X] ± 0.060[1.5]	SF-MONO-AMK-001						
2 PLACE .XX[X] ± 0.12[3.0]	ANGLES ± 2°							
FINISH		MATERIAL						
UNLESS OTHERWISE SPECIFIED DIMENSIONS ARE IN INCHES INTERPRET PER ANSI Y 14.5M-1994		NAME	DATE	SF, MONOPOLE, AMK, 12"-50"				
		CE JL1183	24MAR25					
		RW JL1183	05/08/2025					
		AD YW1047	05/11/2025					
		RE JL1183	05/12/2025					
ECN 50102785AMO		SCALE	DOCUMENT NO.	SF-MONO-AMK-001				
		1:12						
SIZE	Auth Group	INSL	MODEL	DRAWING		SHEET 1 OF 3		
C			VERSION	STATUS	REVISION		VERSION	STATUS
			01	RE	B	02	RE	C

DENSITY		lbs/in ³
MASS	6074.03	lbs
VOLUME	81045.45	in ³
SURFACE AREA	137292.70	in ²
HEIGHT	71.0"	
LENGTH	84.0"	
WIDTH	71.0"	

Confidential

4

3

2

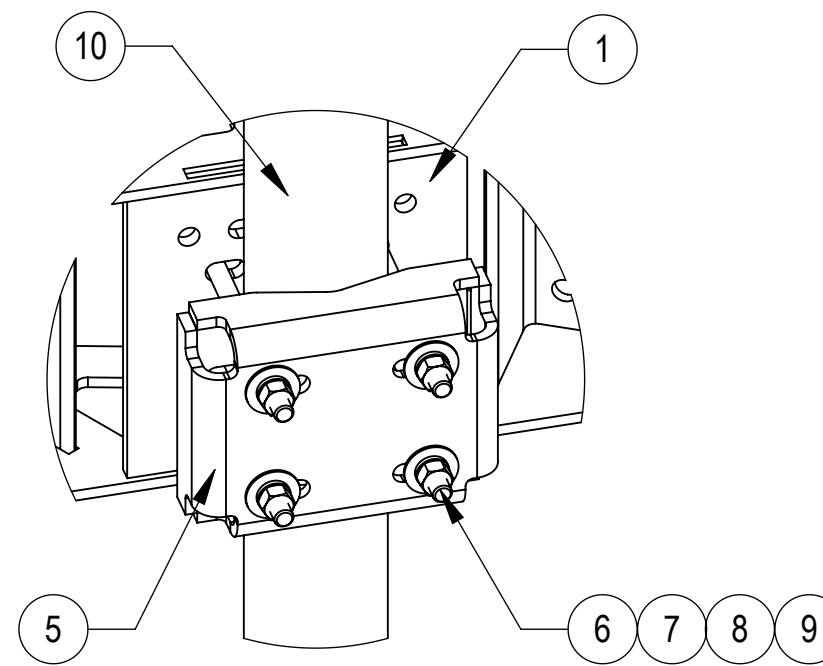
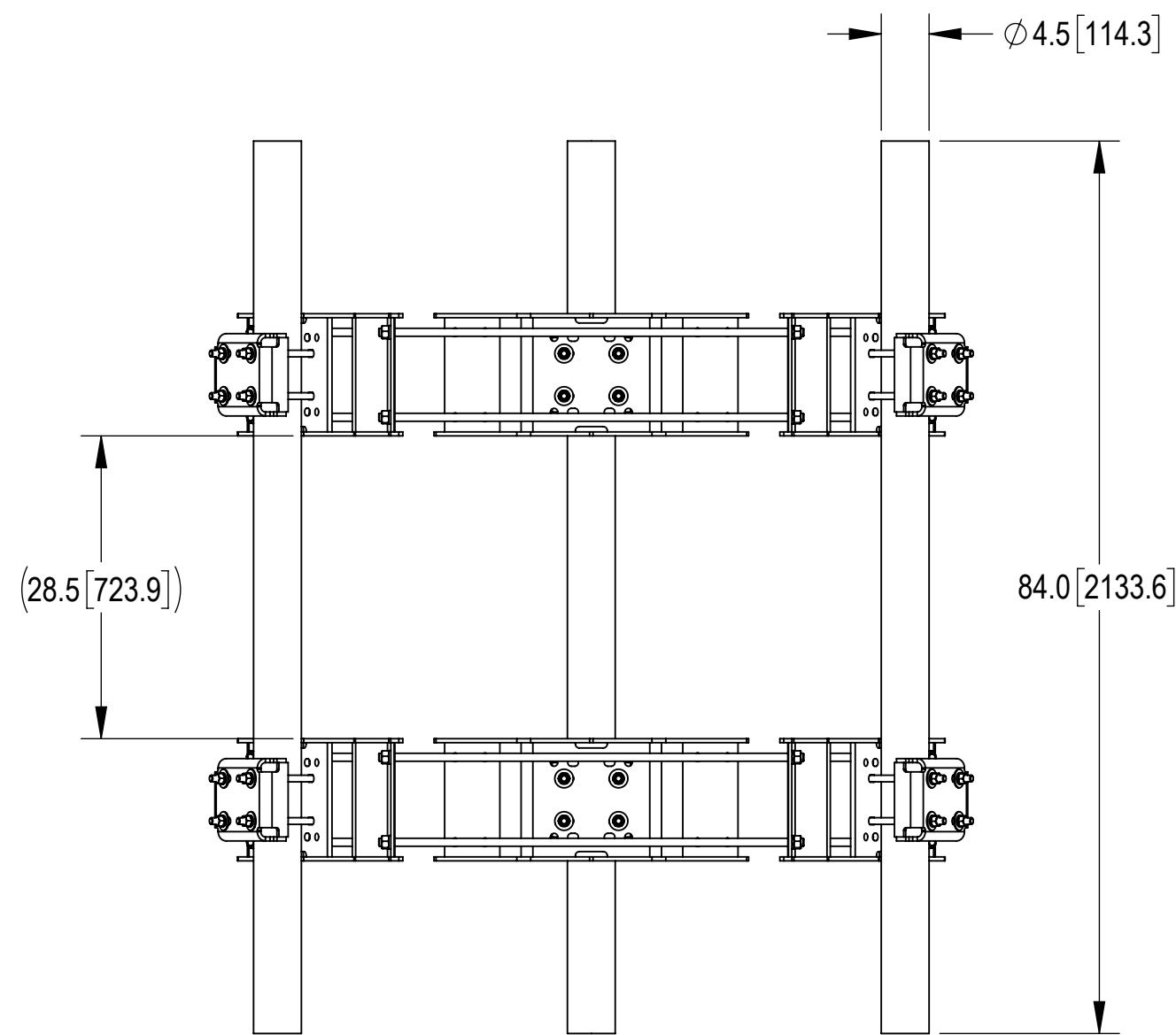
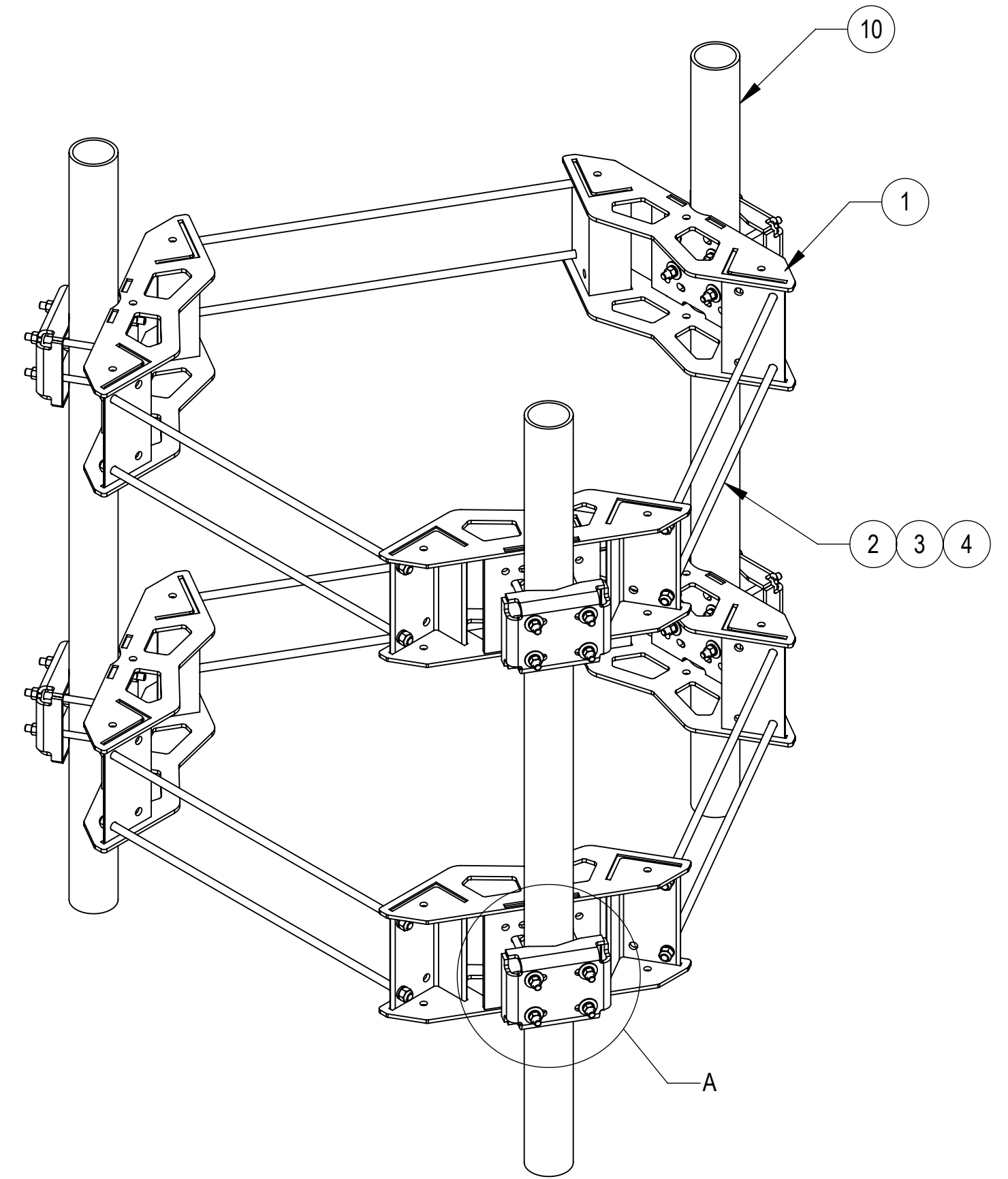
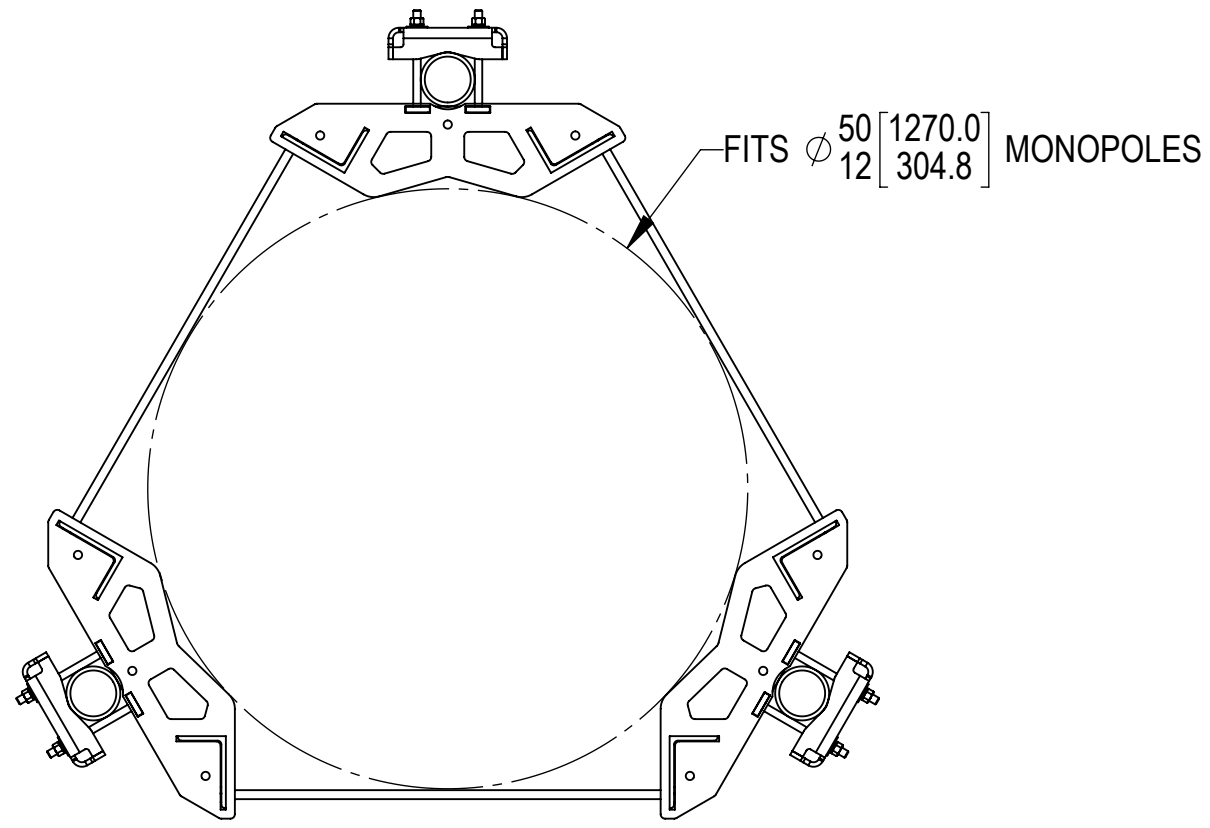
1

4

3

2

1



DETAIL A
SCALE 1 : 6

COMPONENT PART NUMBERS PROVIDED FOR ASSEMBLY PURPOSES;
INDIVIDUAL COMPONENTS MAY BE SHIPPED AS PARTS WITHIN AN INCLUDED KIT.

ITEM	PART NO.	DESCRIPTION	QTY.	WEIGHT	NOTE NO.
1	RM1550301	15"-50" 3 SECTOR RM WLDMNT	6	65.93 LBS	
2	MT38440	3/4" X 40" GALV THREADED ROD GRADE B7	12	4.98 LBS	
3	GWL-06	3/4" GALV LOCK WASHER	24	0.04 LBS	
4	GN-06	3/4" GALV HEX NUT	24	0.15 LBS	
5	MTC4204-1000-00	CLAMP FOR RING MOUNT	6	12.62 LBS	
6	MT-381-10	5/8" X 10" GALV THREADED ROD	24	0.86 LBS	
7	GWF-05	5/8" GALV FLAT WASHER, 1.7OD	48	0.06 LBS	
8	GWL-05	5/8" GALV LOCK WASHER	48	0.03 LBS	
9	GN-05	5/8" GALV HEX NUT	48	0.08 LBS	
10	BPS-CCJ-G-084-H	PIPE-GALV,4.5"OD X 84"	3	105.26 LBS	



TITLE		SF, MONOPOLE, AMK, 12"-50"			
SIZE	SCALE	DOCUMENT NO.			
C	1:12	SF-MONO-AMK-001			
		DRAWING			SHEET
		VERSION	STATUS	REVISION	
Confidential		02	RE	C	2 OF 3

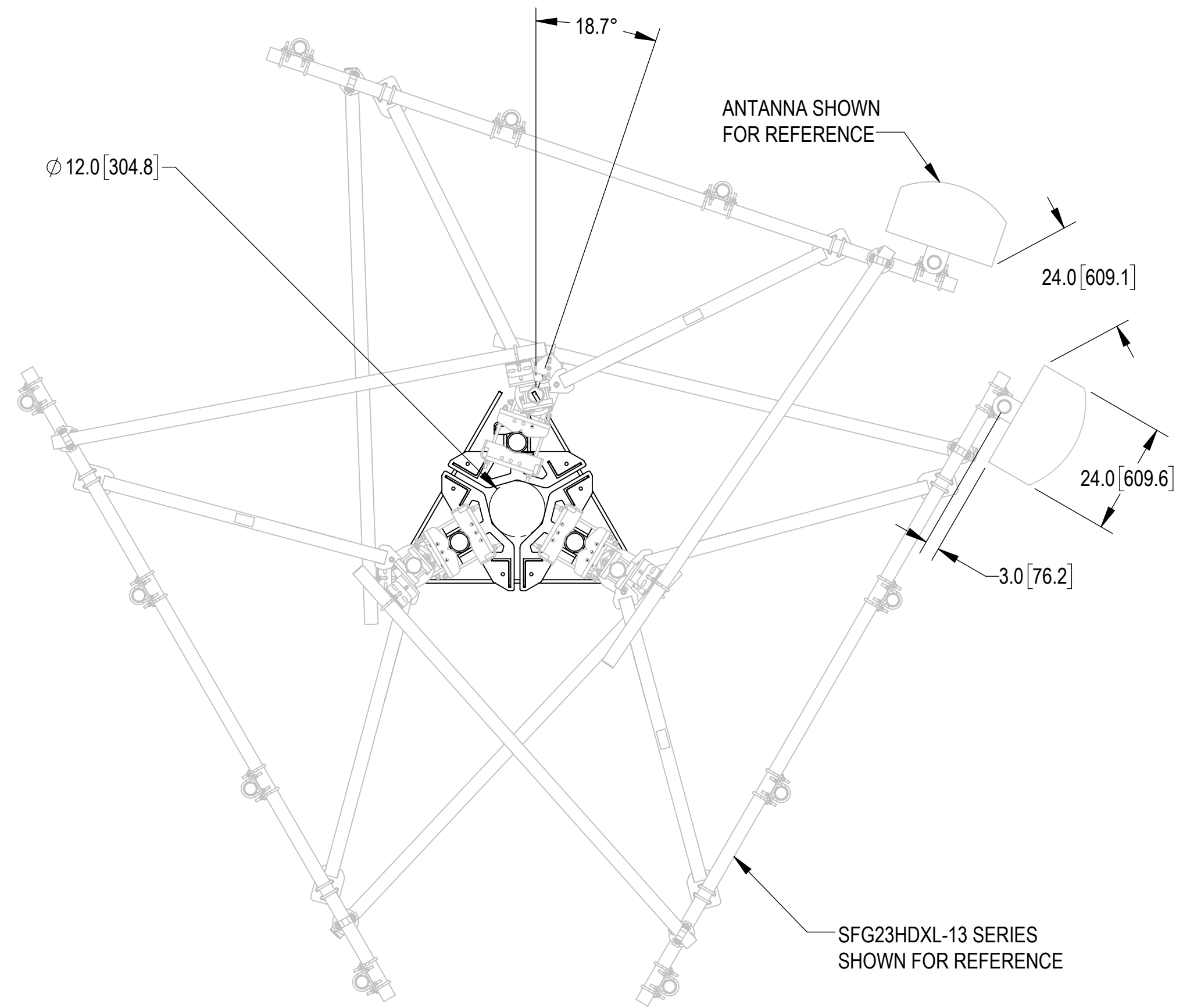
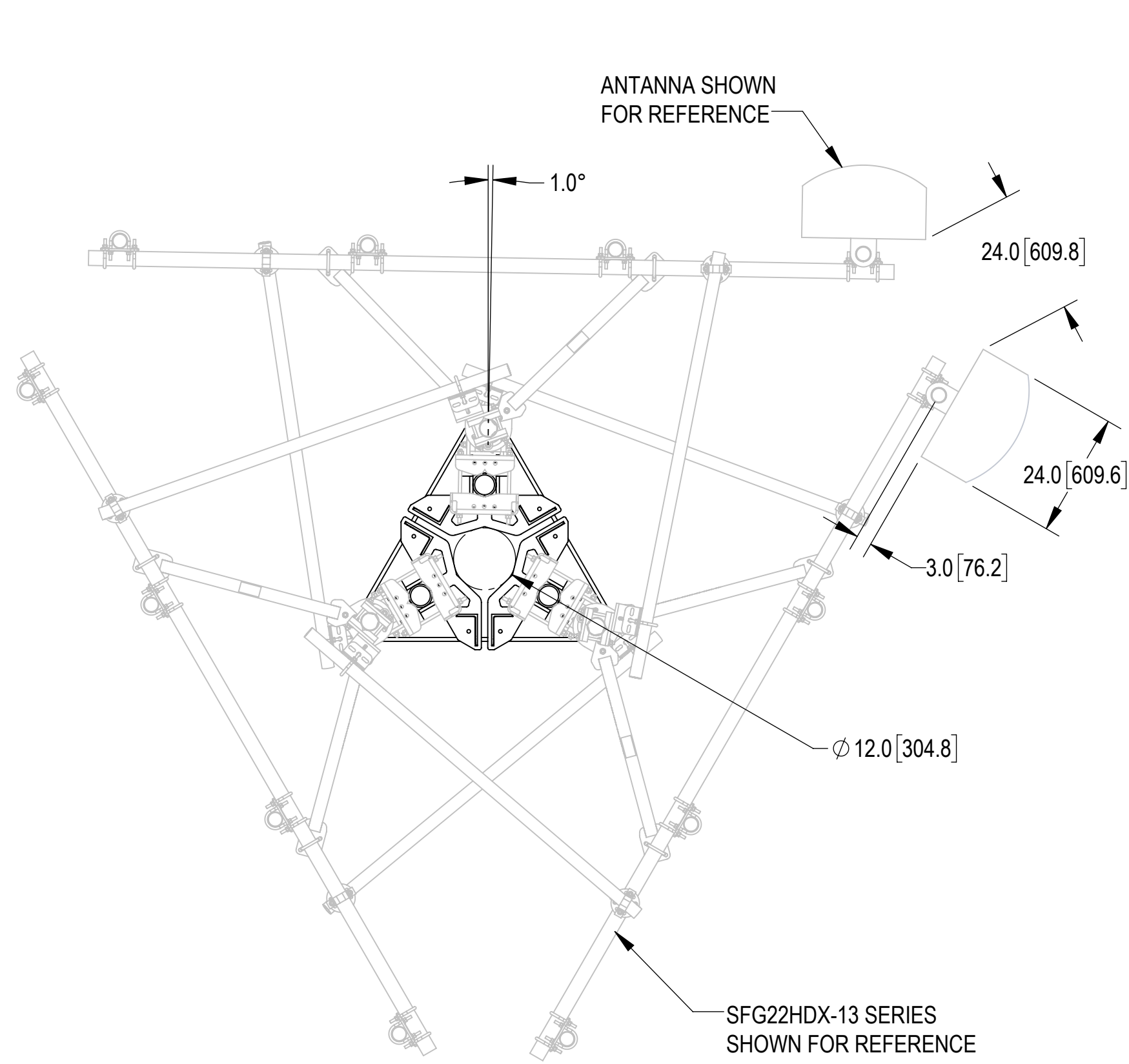
4



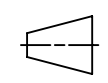
3

2

1

ATTACHED WITH SECTOR FRAMES VIEW
(SECTOR FRAMES SOLD SEPARATELY)



				
TITLE				
SF, MONOPOLE, AMK, 12"-50"				
SIZE	SCALE	DOCUMENT NO.		
C	1:12	SF-MONO-AMK-001		
 	DRAWING			SHEET
	VERSION	STATUS	REVISION	
	02	RE	C	

Confidential