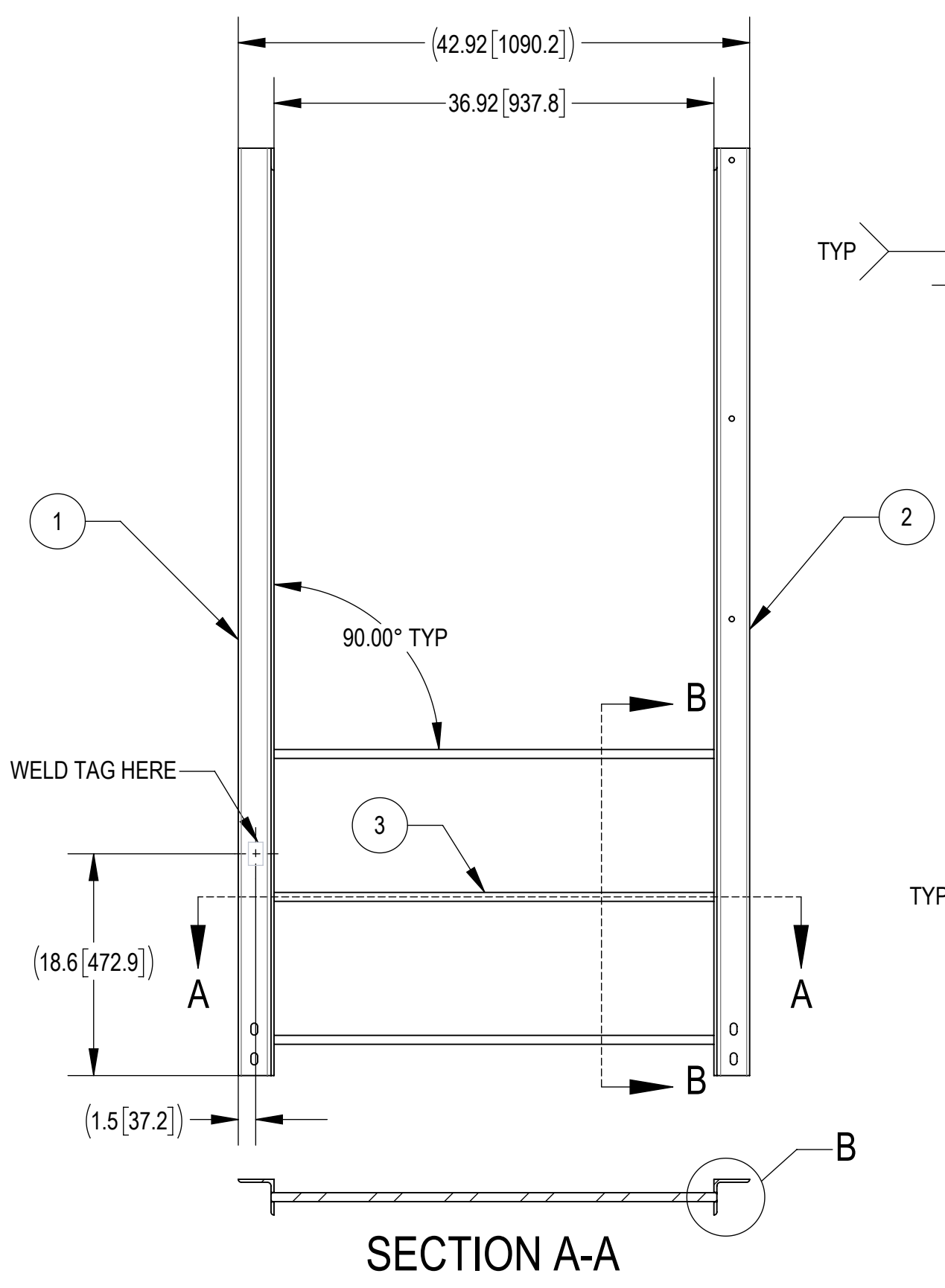
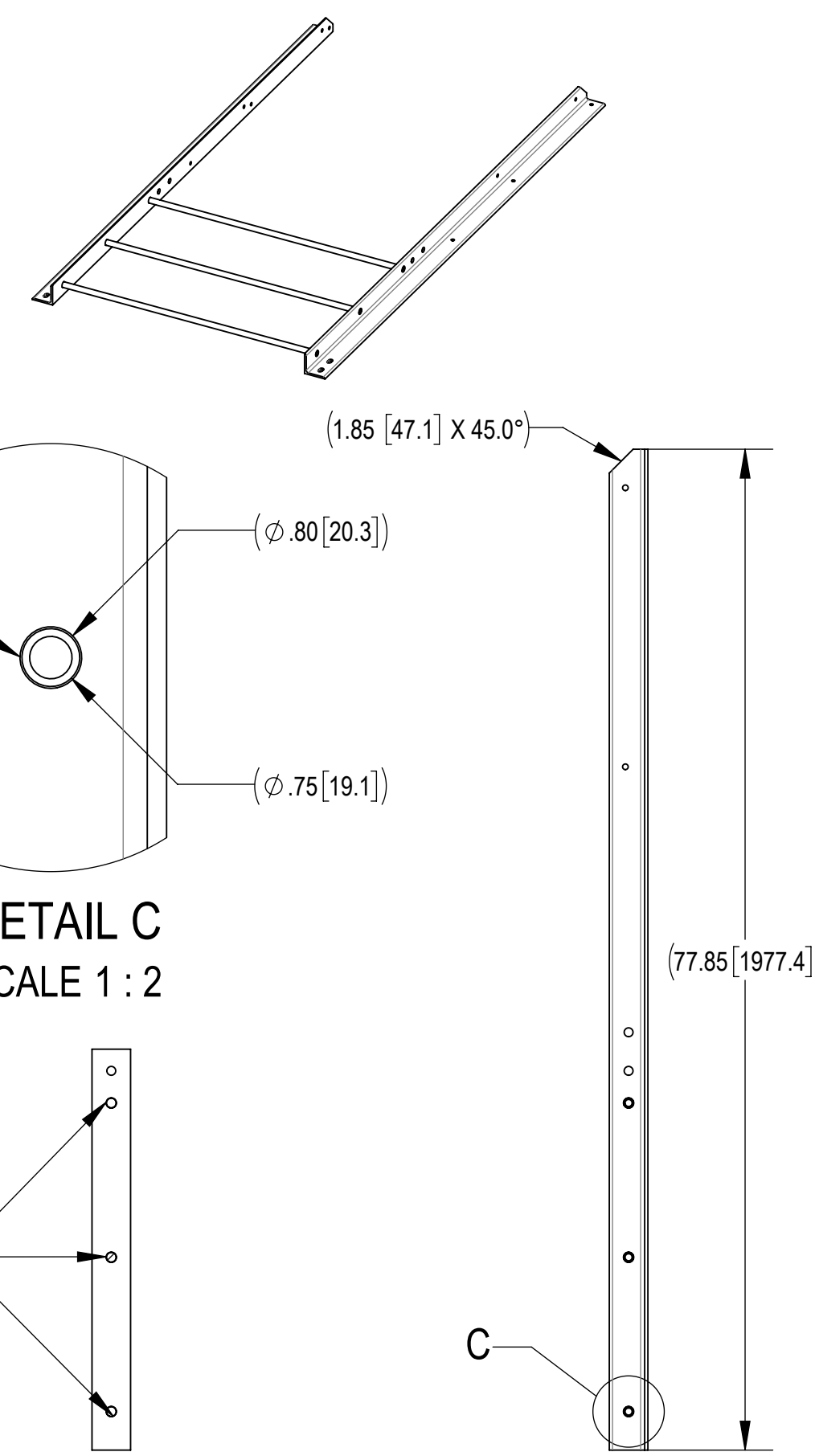


- 1.0 GENERAL NOTES
 1.1 ALL METRIC DIMENSIONS ARE IN BRACKETS [X.X]
 1.2 FEATURES CRITICAL TO QUALITY ARE INDICATED IN ROUNDED BOX (XX)
 1.3 3D DIGITAL FILES ARE FOR REFERENCE. IN CASE OF CONFLICT FOLLOW PDF DRAWING
 1.4 WELD AREAS NOTED ARE CRITICAL TO QUALITY
- 2.0 DESIGN NOTES
- 3.0 MANUFACTURING/SPECIAL REQUIREMENTS
 3.1 BREAK SHARP EDGES AND DEBURR PART FOR SAFE HANDLING
 3.2 WELDING:
 3.2.A ALL WELDING SHALL CONFORM TO AWS D1.1, STEEL STRUCTURAL WELDING CODE
 3.2.B WELDING WORKMANSHIP SHALL BE PER AWS D1.1, TABLE 8.1 (VISUAL INSPECTION)
 3.2.C ALL WELDING SHALL BE PERFORMED BY CERTIFIED WELDERS
 3.2.D ALL WELD SLAG, SPATTER AND SHARP SHALL BE REMOVED PRIOR TO FINISH
 3.2.E WELDER ID TAG SHALL BE LOCATED APPROXIMATELY WHERE SHOWN FOR MANUFACTURER & WELDER TRACEABILITY. TAG SHALL HAVE MANUFACTURER ID (XXX) FOR VENDOR SUPPLIED AND WELDER ID (XXX) FOR COMMSCOPE/VENDOR WELDER. TAG CAN BE UP TO 1/8" THICK & UP TO 2" SQUARE WITH STAMPED/ENGRAVED TEXT NO LESS THAN 1/4" IN HEIGHT
- 3.3 GALVANIZE PER ASTM A123
 3.4 MARK WITH PART NUMBER, REVISION, AND VENDOR ID WITH ETCH, STAMP OR LABEL. CHARACTERS TO BE 0.12" TO 0.24" HIGH AND LEGIBLE TO THE UNAIDED EYE.
- 4.0 TEST
- 5.0 PACKAGING
 5.1 PACKAGING SHALL MEET COMMSCOPE REQUIREMENTS PER DOCUMENT IS-PL-3005

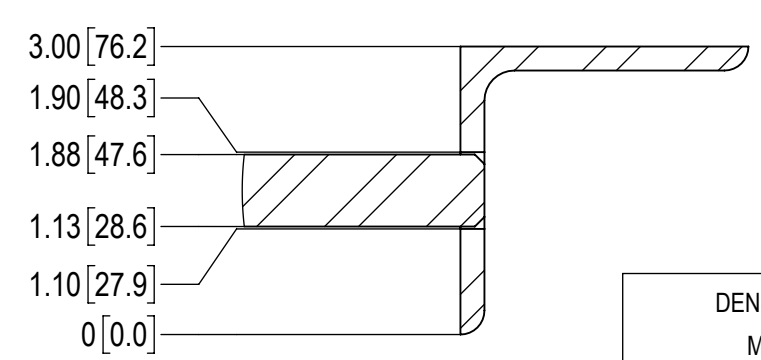
REVISIONS			
REV.	DESCRIPTION	DATE	APPROVED
A	INITIAL RELEASE	MAC 17NOV21	BCROSS
B	DESIGN CHANGED	MAC 11MAR22	BCROSS
C	UPDATED WELDING SIZE 0.3 TO 1/4; ADDED WELDING SYMBOL	LL090 13MAR25	BA1025 50101893AMO



DETAIL C
SCALE 1 : 2

SECTION B-B

SECTION A-A



DETAIL B
SCALE 1 : 2

TABLE 3: THE NUMBER OF EQPLD-1300

TOP MID	QTY.
EQPLD-1000	3
EQPLD-2000	4
EQPLD-3000	5
EQPLD-4000	6
EQPLD-5000	7
EQPLD-6000	8
EQPLD-7000	9
EQPLD-8000	10

TABLE 4

MID	FINISH	MID	FINISH
EQPLD-1000	GALV A123	EQPLD-1000-BR	N/A
EQPLD-2000	GALV A123	EQPLD-2000-BR	N/A
EQPLD-3000	GALV A123	EQPLD-3000-BR	N/A
EQPLD-4000	GALV A123	EQPLD-4000-BR	N/A
EQPLD-5000	GALV A123	EQPLD-5000-BR	N/A
EQPLD-6000	GALV A123	EQPLD-6000-BR	N/A
EQPLD-7000	GALV A123	EQPLD-7000-BR	N/A
EQPLD-8000	GALV A123	EQPLD-8000-BR	N/A

TABLE 1: EQUIPMENT LADDER SERIES

TOP MID	PART NO.	DESCRIPTION	QTY.	WEIGHT	NOTE NO.
EQPLD-1000	EQPLD-1100	LADDER LEG, LEFT SIDE	1	31.29 LBS	
EQPLD-2000	EQPLD-2100	LADDER LEG, LEFT SIDE	1	36.14 LBS	
EQPLD-3000	EQPLD-3100	LADDER LEG, LEFT SIDE	1	40.99 LBS	
EQPLD-4000	EQPLD-4100	LADDER LEG, LEFT SIDE	1	45.84 LBS	
EQPLD-5000	EQPLD-5100	LADDER LEG, LEFT SIDE	1	50.68 LBS	
EQPLD-6000	EQPLD-6100	LADDER LEG, LEFT SIDE	1	55.53 LBS	
EQPLD-7000	EQPLD-7100	LADDER LEG, LEFT SIDE	1	60.38 LBS	
EQPLD-8000	EQPLD-8100	LADDER LEG, LEFT SIDE	1	65.23 LBS	

TABLE 2: EQUIPMENT LADDER SERIES

TOP MID	PART NO.	DESCRIPTION	QTY.	WEIGHT	NOTE NO.
EQPLD-1000	EQPLD-1200	LADDER LEG, RIGHT SIDE	1	31.29 LBS	
EQPLD-2000	EQPLD-2200	LADDER LEG, RIGHT SIDE	1	36.14 LBS	
EQPLD-3000	EQPLD-3200	LADDER LEG, RIGHT SIDE	1	40.99 LBS	
EQPLD-4000	EQPLD-4200	LADDER LEG, RIGHT SIDE	1	45.84 LBS	
EQPLD-5000	EQPLD-5200	LADDER LEG, RIGHT SIDE	1	50.68 LBS	
EQPLD-6000	EQPLD-6200	LADDER LEG, RIGHT SIDE	1	55.53 LBS	
EQPLD-7000	EQPLD-7200	LADDER LEG, RIGHT SIDE	1	60.38 LBS	
EQPLD-8000	EQPLD-8200	LADDER LEG, RIGHT SIDE	1	65.23 LBS	

ITEM	PART NO.	DESCRIPTION	QTY.	WEIGHT	NOTE NO.
1	SEE TABLE 1	LADDER LEG, LEFT SIDE	1	-	
2	SEE TABLE 2	LADDER LEG, RIGHT SIDE	1	-	
3	EQPLD-1300	ROD,LADDER	SEE TABLE 3	4.65 LBS	

COMMSCOPE, INC. OF NORTH CAROLINA

TOLERANCES
 1 PLACE .X[X] ± 0.25[6.3] 3 PLACE .XXX[X] ± 0.06[1.5]
 2 PLACE .XX[X] ± 0.12[3.0] ANGLES ± 2°

SAP MATERIAL MASTER
EQPLD SERIES

FINISH: SEE TABLE 4 MATERIAL: SEE BOM

NAME	DATE	TITLE
CE MAC	11/17/2021	WELDMENT, LADDER
RW LL1090	03/13/2025	
AD BA1025	03/17/2025	
RE YMENG	03/17/2025	

SCALE: 1:12 DOCUMENT NO.: EQPLD SERIES

UNLESS OTHERWISE SPECIFIED DIMENSIONS ARE IN INCHES INTERPRET PER ANSI Y 14.5M-1994

SIZE	Auth Group	INSL	MODEL	DRAWING			SHEET
C			01	RE	B	02	RE
			VERSION	STATUS	REVISION	VERSION	STATUS
			01	RE	B	02	RE

© 2025 CommScope, Inc. Confidential

A

C

B

A