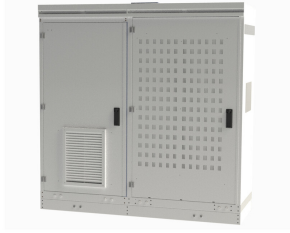


A-VF1-SX01L

Base Product



DerbyPlus Cabinet Samsung Fitout 1

DerbyPlus cabinet is a comprised of Derby and PSC cabinet. Derby Cabinet with rails and brackets fitted to accommodate up to 6 Samsung Radios and PSC cabinet with internal racking to house upto 3 servers and transmission. The following features are included in the cabinet:

- 3U Eltek PSU (Plus Section)
- 2 No. 4kW Rectifiers (Plus Section)
- 1 No. 100Ah Battery (Plus Section)
- 12-way DCDU for Samsung Radios (Plus Section)
- 3-way SPD Protected DCDU for Pole Mounted 4G Radios (Plus Section)
- Compression Gland for Cable Entry
- 3 No. GPS Windows(2 No. in Derby and 1 No. in PSC)

Product Classification

Regional Availability EMEA

Product Type Outdoor cabinet

General Specifications

Access Front and Rear (PSC) | Single Door (Derby)

Accessories Cable plate | External alarm connection | Hangers | In-ground root | Plinth

Cabinet Type Baseband cabinet | Combiner cabinet | Power cabinet | Radio cabinet | Transmission cabinet

Cable Entry Location Bottom

Color Green (RAL 6009) | Light Gray (RAL 7035) | Others available at additional cost

Cooling 175 mm fan (1), (PSU) | 175 mm fan (2), (Derby)

Door Security Internal door contact for front door (Derby) | Internal door contact for front door (PSC) | Swing handle with European cylinder for front door (Derby) | Swing handle with European cylinder for front door (PSC)

Door Type, front Non-removable with included key lock (Derby) | Non-removable with included key lock (PSC)

Door, quantity 3

Front Door Type Single hinged

Lock Type Internal latch for rear door (PSC) | Key lock for front door (Derby) | Key lock for front door (PSC)

Mounting In-ground root | Plinth

A-VF1-SX01L

Radios Included None

Dimensions

Height 1,721.866 mm | 67.79 in

Width 1,899.92 mm | 74.8 in

Depth 599.948 mm | 23.62 in

Material Specifications

Finish Powder coated

Material Type Galvanized steel

Environmental Specifications

Qualification Standards IP33 (Derby) | IP54 (PSC)

Packaging and Weights

Weight, net 299.997 kg | 661.38 lb