



ROOFTOP AND WATER TOWER

PRODUCT SELECTION GUIDE

AS ANNOUNCED ON JULY 18, 2024,

Amphenol has acquired CommScope Outdoor Wireless Networks and Distributed Antenna Systems Businesses. Proudly, as part of the Amphenol family, we are still working on the completion of the new ANDREW website. All links contained within this guide currently lead to **commscope.com**.

At ANDREW, we could not be more excited about — or ready for — what’s to come. Our customers can count on us to keep them at the forefront of connectivity-enabled technology, today and well into the future. Please contact your sales representative to stay up to date on future releases of this product selection guide.

Table of Contents

Structural support solutions..... 3

Resources 4
 ANDREW distribution locations 5

Rooftop applications 6
 High capacity single and dual penetrating rooftop frame..... 7
 High capacity single and dual ballasted rooftop frame..... 8
 PIM-Guard single and dual ballasted rooftop frames 9
 Rooftop frames - non-penetrating 10
 Rooftop frames - penetrating 12
 Chimney mounts..... 13
 Radio mounts 14
 Tripod mounts 15
 Universal tripod mounts 16
 Parapet & cube mounts 17
 Wall mounting components 18
 Galvanized cable support components 20
 Wall cable support components..... 21

Water tower..... 22
 Stackable water tower pod mounts..... 23
 Water tower sector frames 25
 Water tower mounts 26
 Water tower cable support components 27



STRUCTURAL SUPPORT SOLUTIONS

ANDREW provides structural support solutions that deliver stability, durability, and precision for the most important networks in the world. Our premium structural support solutions reinforce your structure and optimize antenna performance. As a result, these solutions help you realize significant, long-term OpEx savings.

Our support systems are suited to be used on virtually any kind of tower, monopole, rooftop structure or water tower. Each solution is engineered to meet or exceed the latest EIA/TIA code requirements and conform to both ISO-9001 standards and AISC specifications. This proven excellence enables network operators to:

- Minimize or eliminate antenna misalignment
- Utilize available spectrum more efficiently
- Improve RF path integrity and overall network performance
- Increase throughput and quality of service
- Mitigate customer churn and total cost of ownership

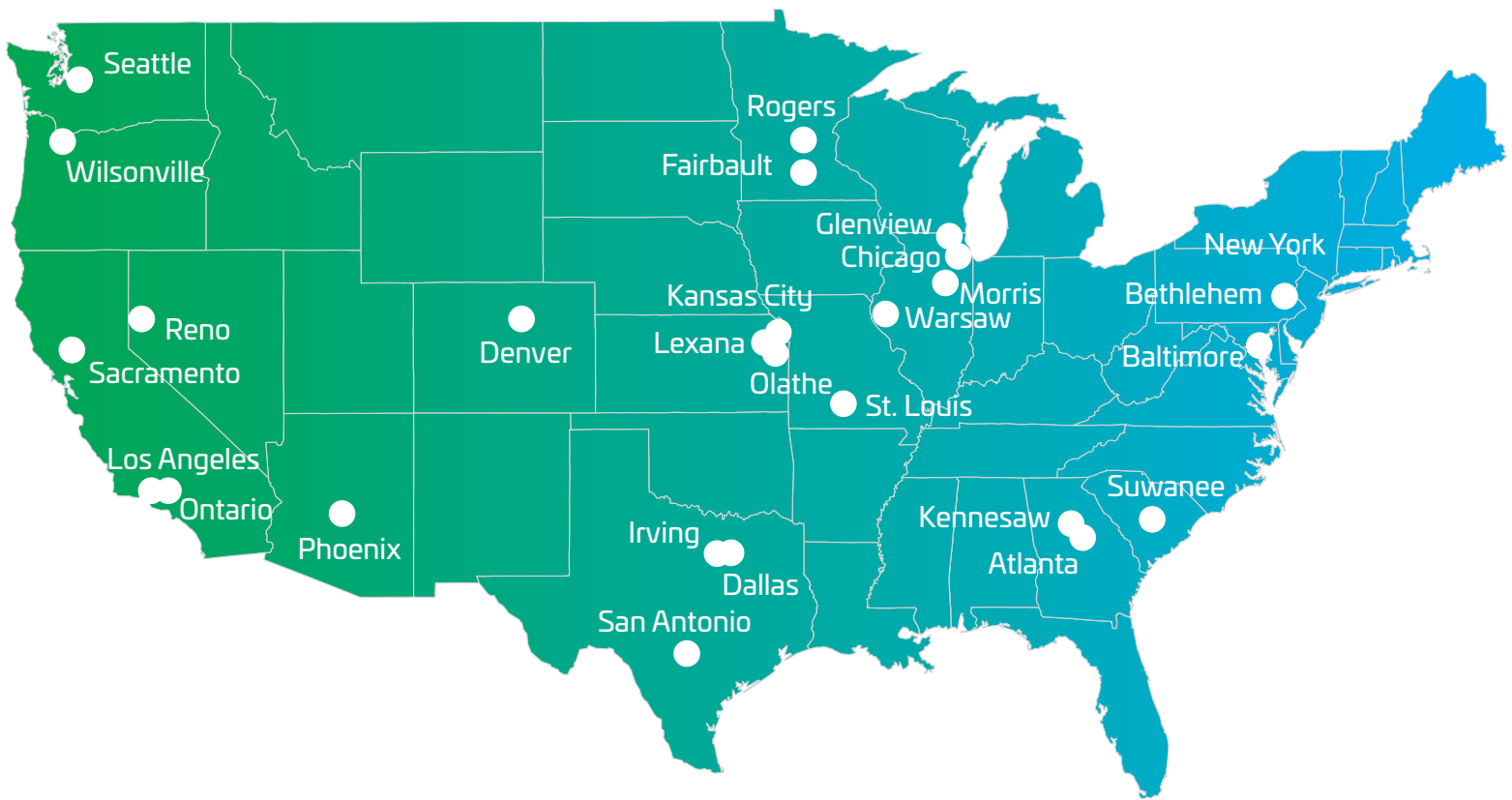
Because our components are engineered and manufactured to the highest standards and most exact specifications, you can rest assured they've been designed to fit snugly on your tower and fabricated to withstand the harshest elements. Whether you need additional U-bolts for your mount, or struts and brackets for your microwave, pipe or stand-off mounts, we deliver the most durable mounting components to keep your antenna properly aligned.

RESOURCES

Where to buy

Key ANDREW locations





SERVICED BY



[View our full product line](#)

ROOFTOP APPLICATIONS

Single and dual penetrating rooftop frame

Single and dual ballasted rooftop frame

Medium capacity roof frames

Rooftop frames - non-penetrating

Rooftop frames - penetrating

Chimney mounts

Radio mounts

Tripod mounts

Universal tripod mounts

Parapet & cube mounts

Wall mounting components

Galvanized cable support components

Wall cable support components



HIGH CAPACITY SINGLE AND DUAL PENETRATING ROOFTOP FRAME

ORDERING INFORMATION

ANDREW now offers a complete line of high-capacity rooftop pipe sector frames designed for increased loading and lower EPA than traditional angle-based rooftop frames. The new RT-Series rooftop mounts are available in both penetrating and non-penetrating frame designs with multiple face size and pipe count options offered as a single part number to simplify ordering.

The RT-Series rooftop mounts all feature heavy duty 2 7/8" OD face pipes and antenna pipes and are rated to both AT&T and TIA-5053 standards with up to 5 antenna pipes (face width dependent). The frame features built-in mechanical adjustments for roof pitch with either single or dual frame versions to maximize load bearing capabilities.

**Single penetrating
RT series rooftop frame**
RT-SF10-3-126



**Dual penetrating
RT series rooftop frame**
RT-DSF12-3-126



DESCRIPTION	FACE WIDTH	PIPES INCLUDED	PART NUMBER
Single penetrating rooftop frame—meets TIA 5053 standard			
Single penetrating rooftop sector frame	7' face width	(2) 2-7/8" OD X 96" antenna pipes	RT-SF7-2-96
		(2) 2-7/8" OD X 126" antenna pipes	RT-SF7-2-126
		(3) 2-7/8" OD X 96" antenna pipes	RT-SF7-3-96
		(3) 2-7/8" OD X 126" antenna pipes	RT-SF7-3-126
	10' 6" face width	(3) 2-7/8" OD X 96" antenna pipes	RT-SF10-3-96
		(3) 2-7/8" OD X 126" antenna pipes	RT-SF10-3-126
		(4) 2-7/8" OD X 96" antenna pipes	RT-SF10-4-96
		(4) 2-7/8" OD X 126" antenna pipes	RT-SF10-4-126
	12' 6" face width	(3) 2-7/8" OD X 96" antenna pipes	RT-SF12-3-96
		(3) 2-7/8" OD X 126" antenna pipes	RT-SF12-3-126
		(4) 2-7/8" OD X 96" antenna pipes	RT-SF12-4-96
		(4) 2-7/8" OD X 126" antenna pipes	RT-SF12-4-126

DESCRIPTION	FACE WIDTH	PIPES INCLUDED	PART NUMBER
Dual penetrating rooftop frame—meets TIA 5053 standard			
Dual penetrating rooftop sector frame	12' 6" face width	(3) 2-7/8" OD x 96" antenna pipes	RT-DSF12-3-96
		(3) 2-7/8" OD x 126" antenna pipes	RT-DSF12-3-126
		(4) 2-7/8" OD x 96" antenna pipes	RT-DSF12-4-96
		(4) 2-7/8" OD x 126" antenna pipes	RT-DSF12-4-126
	14' 6" face width	(3) 2-7/8" OD x 96" antenna pipes	RT-DSF14-3-96
		(3) 2-7/8" OD x 126" antenna pipes	RT-DSF14-3-126
		(4) 2-7/8" OD x 96" antenna pipes	RT-DSF14-4-96
		(4) 2-7/8" OD x 126" antenna pipes	RT-DSF14-4-126

HIGH CAPACITY SINGLE AND DUAL BALLASTED ROOFTOP FRAME

ORDERING INFORMATION

Single ballasted

RT series rooftop frame

RT-NF10-3-96
(Shown with RT-NFR4 RRU mount)



Dual ballasted

RT series rooftop frame

RT-DF12-4-126



DESCRIPTION	FACE WIDTH	PIPES INCLUDED	PART NUMBER
Single ballasted rooftop frame—meets TIA 5053 standard			
Single ballasted rooftop sector frame	7' face width	(2) 2-7/8" OD x 96" antenna pipes	RT-NF7-2-96
		(2) 2-7/8" OD x 126" antenna pipes	RT-NF7-2-126
		(3) 2-7/8" OD x 96" antenna pipes	RT-NF7-3-96
		(3) 2-7/8" OD x 126" antenna pipes	RT-NF7-3-126
	10' 6" face width	(3) 2-7/8" OD x 96" antenna pipes	RT-NF10-3-96
		(3) 2-7/8" OD x 126" antenna pipes	RT-NF10-3-126
		(4) 2-7/8" OD x 96" antenna pipes	RT-NF10-4-96
		(4) 2-7/8" OD x 126" antenna pipes	RT-NF10-4-126
	12' 6" face width	(3) 2-7/8" OD x 96" antenna pipes	RT-NF12-3-96
		(3) 2-7/8" OD x 126" antenna pipes	RT-NF12-3-126
		(4) 2-7/8" OD x 96" antenna pipes	RT-NF12-4-96
		(4) 2-7/8" OD x 126" antenna pipes	RT-NF12-4-126
RRU mounting kit for RT series ballasted frames	N/A	N/A	RT-NFR4

DESCRIPTION	FACE WIDTH	PIPES INCLUDED	PART NUMBER
Dual ballasted rooftop frame—meets TIA 5053 standard			
Dual ballasted rooftop sector frame	12' 6" face width	(3) 2-7/8" OD x 96" antenna pipes	RT-DF12-3-96
		(3) 2-7/8" OD x 126" antenna pipes	RT-DF12-3-126
		(4) 2-7/8" OD x 96" antenna pipes	RT-DF12-4-96
		(4) 2-7/8" OD x 126" antenna pipes	RT-DF12-4-126
	14' 6" face width	(3) 2-7/8" OD x 96" antenna pipes	RT-DF14-3-96
		(3) 2-7/8" OD x 126" antenna pipes	RT-DF14-3-126
		(4) 2-7/8" OD x 96" antenna pipes	RT-DF14-4-96
		(4) 2-7/8" OD x 126" antenna pipes	RT-DF14-4-126
RRU mounting kit for RT series ballasted frames 1 per frame - Qty 2 required for RT-DF	N/A	N/A	RT-NFR4

PIM-GUARD SINGLE AND DUAL BALLASTED ROOFTOP FRAMES

ORDERING INFORMATION

PIM-Guard single ballasted rooftop frames

RT-NF11-3-120



PIM-Guard dual ballasted rooftop frames

RT-DF15-4-120



DESCRIPTION	FACE WIDTH	PIPES INCLUDED	PART NUMBER
PIM-Guard single ballasted rooftop frames			
PIM-Guard high capacity non-penetrating roof frame with optimized antenna spacing	11' face width	None	RT-NF11-B
		(3) 2-7/8"OD x 120" antenna pipes	RT-NF11-3-120
	13' face width	None	RT-NF13-B
		(4) 2-7/8"OD x 120" antenna pipes	RT-NF13-4-120
PIM-Guard dual ballasted rooftop frames			
PIM-Guard high capacity dual non-penetrating roof frame with optimized antenna spacing	15' face width	None	RT-DF15-B
		(4) 2-7/8"OD x 120" antenna pipes	RT-DF15-4-120
		(5) 2-7/8"OD x 120" antenna pipes	RT-DF15-5-120

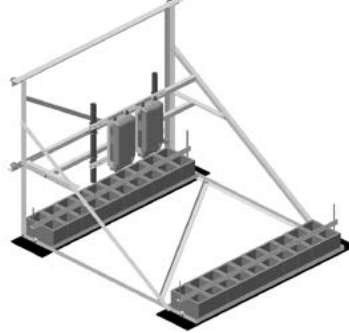
ROOFTOP FRAMES - NON-PENETRATING

ORDERING INFORMATION

RF-NL non-penetrating angle roof frames



Rooftop frame RRU retro kit



Rooftop microwave dish ballast mount system



DESCRIPTION	PART NUMBER
Non-penetrating roof frame, 7' wide (Angle-based design)	
Base frame kit only - 3-1/2" OD pipes ordered separately	RF-NL7-B
Two 3-1/2" OD x 72" pipes	RF-NL7-2-72
Three 3-1/2" OD x 72" pipes	RF-NL7-3-72
Two 3-1/2" OD x 96" pipes	RF-NL7-2-96
Three 3-1/2" OD x 96" pipes	RF-NL7-3-96
Non-penetrating roof frame, 10' -6" (3.2 m) wide (Angle-based design)	
Base frame kit only - 3-1/2" OD pipes ordered separately	RF-NL10-B
Two 3-1/2" OD x 72" pipes	RF-NL10-2-72
Three 3-1/2" OD x 72" pipes	RF-NL10-3-72
Two 3-1/2" OD x 96" pipes	RF-NL10-2-96
Three 3-1/2" OD x 96" pipes	RF-NL10-3-96
Rooftop frame RRU retrofit kit	
RRU retrofit kit	RF-NRK
Rooftop microwave dish ballast mount system	
Three 4.5" OD X 8' supports with 3.5" OD strut support member	RF-MW8-B

ROOFTOP FRAMES - NON-PENETRATING

ORDERING INFORMATION

Multi-sector roof frames



Rooftop peak mount



Non-penetrating roof mounts



DESCRIPTION	FACE WIDTH	PIPES INCLUDED	PART NUMBER
Multi-sector roof frames (Ballast tray not included)			
Multi-sector roof frame	10' 6" face width	None	MT-180
Heavy duty multi-sector roof frame		(9) 2-7/8"OD x 96" antenna pipes	MT-180-HD

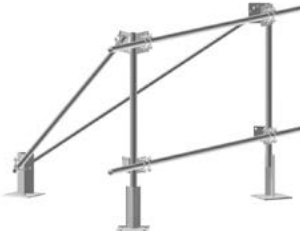
DESCRIPTION	PART NUMBER
Ballast trays & accessories for multi-sector roof frames	
Ballast tray for multi-sector roof frame (MT-180)	MT-181
Ballast tray for heavy duty multi-sector roof frame (MT-180-HD)	MT-181-HD
Non-penetrating sled tie down kit	RF-TDK
Rubber mat 1/2" x 18" x 48"	MT-F1637

DESCRIPTION	PIPES INCLUDED	PART NUMBER
Non-penetrating roof mounts		
Non-penetrating roof tripod mounts	(1) 1.9"OD x 60" pipe	RM-SM190-60
	(1) 2-3/8"OD x 96" pipe	RM-SM238-60
Non-penetrating peak mount	Order separately (2-3/8" to 4-1/2" OD)	RT-PM-B

ROOFTOP FRAMES - PENETRATING

ORDERING INFORMATION

Penetrating rooftop mount



Multi-sector penetrating rooftop mount



DESCRIPTION	PIPES INCLUDED	PART NUMBER
Penetrating rooftop mount		
Rooftop mount - single sector	None	TP-100
Multi-sector penetrating rooftop mount		
Rooftop mount - three sector	None	TP-300

CHIMNEY MOUNTS

ORDERING INFORMATION

Chimney mounts



Custom smokestack bracket



DESCRIPTION	CHIMNEY SIZE	PART NUMBER
Chimney mounts		
Round chimney mounts	5' to 6' OD	CM-R56
	6' to 7' OD	CM-R67
	7' to 8' OD	CM-R78
	8' to 9' OD	CM-R89
	9' to 11' OD	CM-R911
	11' to 13' OD	CM-R1113
Square chimney mounts	1' to 10' Face	CM-S10
DESCRIPTION	ANTENNA PIPE SIZE	PART NUMBER
Slider brackets for chimney mounts (pipe not included)		
Slider brackets for chimney mounts	2-3/8" OD	CM-SB2
	2-7/8" OD	CM-SB3
	3-1/2" OD	CM-SB35
	4-1/2" OD	CM-SB45

DESCRIPTION	PART NUMBER
Chimney mount sector frame mounting bracket	
Enables mounting of sector frames to chimney Requires 2 brackets & 2 chimney mounts per sector frame	760258156-001

RADIO MOUNTS

ORDERING INFORMATION

Rooftop RRU mounts



Ground level RRU mounts



DESCRIPTION	PART NUMBER
Rooftop RRU mounts	
Non-penetrating RRU mount (2-pole mounting locations)	RR-TFS
Non-penetrating RRU mount (3-pole mounting locations)	RR-TFS3
Ground level RRU mounts	
Base shoe pipe with 14-1/2" x 14-1/2" base plate	RR-BSP-10
Cluster support bracket - 5 lines	CS-BR
Cluster support bracket - 18 lines	CS-BRL
Ice shield - 24" x 24"	RR-IS24

TRIPOD MOUNTS

ORDERING INFORMATION

Rooftop monopole tripods



Hardware kits for tripods



Multi-sector mount for tripods



DESCRIPTION	MAST SIZE	PART NUMBER
Rooftop monopole tripods		
Rooftop tripod assembly	3 meter (9'-9")	RT-MPT-3
	4 meter (13'-1")	RT-MPT-4
	5 meter (16'-5")	RT-MPT-5
	6 meter (19'-8")	RT-MPT-6
	7 meter (22'-11")	RT-MPT-7

DESCRIPTION	PART NUMBER
Hardware kits for tripods	
Anchor set for rooftop tripod mount	MT-421
Thru-bolt set for rooftop tripod mount	MT-422

DESCRIPTION	POLE SIZE	PART NUMBER
Multi-sector mount for tripods		
Three sector clamp on mount	For poles 3-1/2' to 6" OD	SCSMRU-302-M

UNIVERSAL TRIPOD MOUNTS

ORDERING INFORMATION

Universal tripod mounts



Non-penetrating roof ballast sled for tripods

TP-G412-72 with MT-416



DESCRIPTION	PIPES INCLUDED	PART NUMBER
Universal tripod mount, 2-7/8" OD	Base only for 2-7/8" or 3-1/2" OD, pipe ordered separately	TP-G300-B
	2-7/8" OD x 96"	TP-G300-96
	2-7/8" OD x 126"	TP-G300-126
Universal tripod mount, 3-1/2" OD	3-1/2" OD x 96"	TP-G312-96
	3-1/2" OD x 126"	TP-G312-126
Universal tripod mount, 4-1/2" OD	Base only for 4-1/2" OD, pipe ordered separately	TP-G412-B
	4-1/2" OD x 96"	TP-G412-96
	4-1/2" OD x 126"	TP-G412-126
	4-1/2" OD x 150"	TP-G412-150
Non-penetrating roof ballast sled for tripods		
Non-penetrating roof sled, tripod mount ordered separately	N/A	MT-416
Rubber mat, 1/2" x 18" x 48", six mats required for ballast tray	N/A	MT-F1637

PARAPET & CUBE MOUNTS

ORDERING INFORMATION

Parapet mount



Cube mount

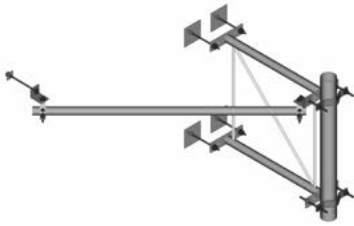


DESCRIPTION	PIPES INCLUDED	PART NUMBER
Parapet mount		
Non-penetrating rooftop parapet mount	(1) 2-3/8"OD x 86" antenna pipe	RF-PM86
Cube mount		
Rooftop cube mount ballast for microwave antennas	Order separately (2-3/8" to 3-1/2" OD)	RT-CUBE-MBASE

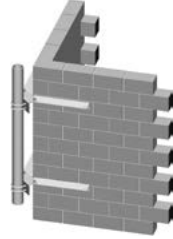
WALL MOUNTING COMPONENTS

ORDERING INFORMATION

Stand-off wall mounts



Corner wall mounts



Cantilever wall mounts



Angle Wall Mounts



DESCRIPTION	PIPES INCLUDED	PART NUMBER
Stand-off wall mount		
Stand-off wall mount, 36", for solid and hollow walls, includes 72" stiff arm	Pipe ordered separately	DM-300
Corner wall mount		
For 2-3/8" OD pipe	(1) 2-3/8"OD x 96" pipe	CW-M2-96
For 2-7/8" pipe	(1) 2-7/8" OD x 120" pipe	CW-M3-120
For 4-1/2" OD pipe	(1) 4-1/2"OD x 96" pipe	CW-M4-96

DESCRIPTION	STAND-OFF DISTANCE	PIPES INCLUDED	PART NUMBER
Cantilever wall mounts			
Cantilever wall mount for 2-3/8" pipe	2-3/4" stand-off	Order separately - 2-3/8" pipe	MT-250
	5-1/2" stand-off		MT-250L

DESCRIPTION	PIPES INCLUDED	PART NUMBER
Angle wall mounts		
Angle wall mounts for solid or hollow walls	Order separately - 2-3/8" pipe	WMA238
	Order separately - 2-7/8" pipe	WMA300
	Order separately - 3-1/2" pipe	WMA312
	Order separately - 4-1/2" pipe	WMA412
Hollow wall mount kit	N/A	HWK58
Solid wall mount kit		SWK58

WALL MOUNTING COMPONENTS

ORDERING INFORMATION

Adjustable wall mounts



Wall mount with stand-off



DESCRIPTION	PART NUMBER
Adjustable wall mounts, 6" stand-off	
For hollow walls, includes backing plates, kit of 2	MT-221
For solid walls, includes wall anchors, kit of 2	MT-222
Adjustable wall mounts, 12" stand-off	
For hollow walls, includes backing plates, kit of 2	MT-221L
For solid walls, includes wall anchors, kit of 2	MT-222L
Optional backing plate	
Backing plate kit, 12" x 12"	MT-223

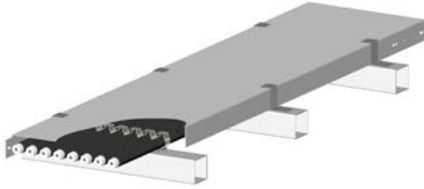
Note: Pipes and U-bolts sold separately

DESCRIPTION	PIPES INCLUDED	PART NUMBER
Wall mount with 18.6" stand-off		
For solid walls, includes wall anchors	(1) 2-7/8"OD x 150" pipe	WM-ST1812

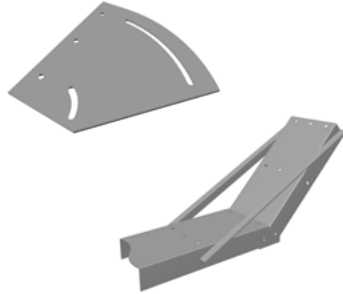
GALVANIZED CABLE SUPPORT COMPONENTS

ORDERING INFORMATION

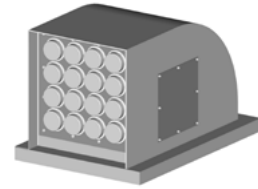
Cable bridge kits



Cable bridge kit accessories



Rooftop hood entry



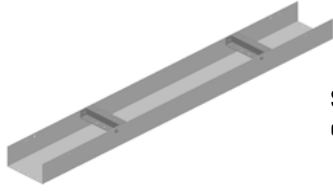
DESCRIPTION	NUMBER OF HOLES	PART NUMBER
Cable bridge kits		
Self-splicing rooftop cable bridge kits - 12 gauge covers	4 holes	MT-F1542-11
	8 holes	MT-F1543
	12 holes (incl 4 & 8 run covers)	MT-F1595
Self-splicing rooftop cable bridge kits for SnapStak® snap-in hangers	4 holes	RT-CB4D
	8 holes	RT-CB8D
	12 holes	RT-CB12D
DESCRIPTION	NUMBER OF CABLE RUNS	PART NUMBER
Cable bridge kit accessories		
Adjustable splice for roof-top coaxial cable bridge kits	4 runs	MT-F1573-11
	8 runs	MT-F1574
	12 runs	MT-F1597
Extension kit for roof-top coaxial cable bridge kits	Extension kit for 4 runs	MT-F1703
	Extension kit for 8 runs	MT-F1704
Rooftop cable tray step over	N/A	RT-ST
PVC roof sleeper	No holes - 8' long	MT-F1585
Rubber sleeper pad	1/4" x 4" x 10' roll	CT-P4
	1/4" x 4" x 50' roll	CT-P50

DESCRIPTION	PART NUMBER
Rooftop hood entry	
Rooftop hood entry kit - cable entry ports not included	MT-365G

WALL CABLE SUPPORT COMPONENTS

ORDERING INFORMATION

Wall cable support kits



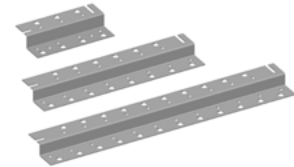
Splice kits for wall cable supports



Wall mount brackets for wall cable supports



Splice kits for wall cable supports



DESCRIPTION	NUMBER OF CABLE RUNS	PART NUMBER
Wall cable support kits		
Wall cable support kits	4 runs	MT-F1589
	8 runs	MT-F1590
	12 runs, self-splicing	MT-F1591
Splice kits for wall cable supports	4 runs	MT-F1607
	8 runs	MT-F1608
Wall mount brackets for wall cable supports	4 runs	MT-F1586
	8 runs	MT-F1587
	12 runs	MT-F1588
Horizontal Z-brackets	11" wide for 7 runs	ZB-H4
	23" wide for 14 runs	ZB-H8
	35" wide for 22 runs	ZB-H12
Z-bracket wall support covers for SnapStak® snap-in hangers (Z-brackets ordered separately - qty 3 required)	4-hole cover	WC-SC12D
	8-hole cover	WC-SC4D
	12-hole cover	WC-SC8D

WATER TOWER APPLICATIONS

Wall cable support components

Stackable water tower pod mounts

Water tower sector frames

Water tower mounts



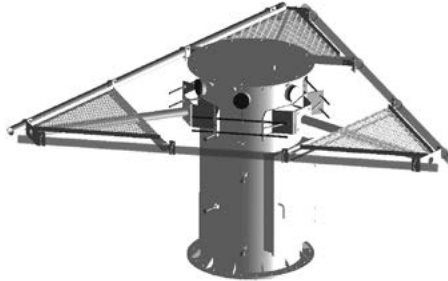
STACKABLE WATER TOWER POD MOUNTS

ORDERING INFORMATION

Base kit



Base kit with platform



DESCRIPTION	FACE WIDTH	PIPES INCLUDED	PART NUMBER
Water tower pod mounts			
Base kit only - platform & pipes ordered separately	N/A	None	WT-SPM-B
Base kit with platform - pipes ordered separately	12'-6" wide face	None	WT-SPM12-B
Pod base, 3-sector platform, & antenna pipes		(9) 2-3/8"OD x 96" antenna pipes	WT-SPM12-9-96
		(9) 2-3/8"OD x 126" antenna pipes	WT-SPM12-9-126
		(12) 2-3/8"OD x 96" antenna pipes	WT-SPM12-12-96
		(12) 2-3/8"OD x 126" antenna pipes	WT-SPM12-12-126
Base Kit with Platform - Pipes ordered separately	14'-6" wide face	None	WT-SPM14-B
Pod Base, 3-Sector Platform, & Antenna Pipes		(9) 2-3/8"OD x 96" antenna pipes	WT-SPM14-9-96
		(9) 2-3/8"OD x 126" antenna pipes	WT-SPM14-9-126
		(12) 2-3/8"OD x 96" antenna pipes	WT-SPM14-12-96
		(12) 2-3/8"OD x 126" antenna pipes	WT-SPM14-12-126

STACKABLE WATER TOWER POD MOUNTS

ORDERING INFORMATION

Mini monopole for pod mounts



Extension for pod mounts

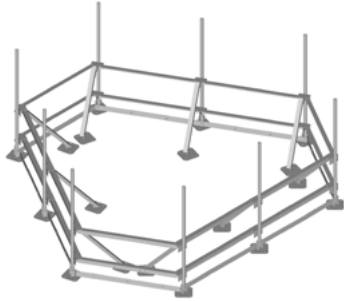


DESCRIPTION	MONOPOLE HEIGHT	PART NUMBER
Mini monopole for pod mounts		
Mini monopole for stackable pod mounts	7' tall	WT-MMP-7
	10' tall	WT-MMP-10
	16' tall	WT-MMP
Extension for pod mounts		
Stackable pod mount extension	1' tall	WT-SPM-E1

WATER TOWER SECTOR FRAMES

ORDERING INFORMATION

3-sector water tower rooftop frames



Single sector water tower rooftop frames



Water tower sector frame extensions



DESCRIPTION	SIZE	PIPES INCLUDED	PART NUMBER
Water tower pod mounts			
3-sector water tower rooftop frames	12' face width	(9) 2-3/8"OD x 96" antenna pipes	WT-RTA12-9-96
		(12) 2-3/8"OD x 96" antenna pipes	WT-RTA12-12-96
	14' face width	(9) 2-3/8"OD x 96" antenna pipes	WT-RTA14-9-96
		(12) 2-3/8"OD x 96" antenna pipes	WT-RTA14-12-96
Single sector water tower rooftop frames	12' face width	(3) 2-3/8"OD x 96" antenna pipes	WT-SMA12-3-96
		(4) 2-3/8"OD x 96" antenna pipes	WT-SMA12-4-96
	14' face width	(3) 2-3/8"OD x 96" antenna pipes	WT-SMA14-3-96
		(4) 2-3/8"OD x 96" antenna pipes	WT-SMA14-4-96
Water tower sector frame extensions	6' long extension	(1) 2-3/8"OD x 96" antenna pipes	WT-RTA6-96E
	7' long extension	(1) 2-3/8"OD x 96" antenna pipes	WT-RTA7-96E

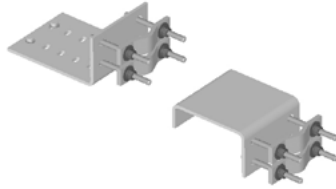
WATER TOWER MOUNTS

ORDERING INFORMATION

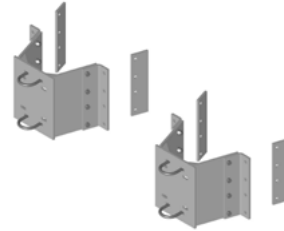
Water tower tripod mounts



Water tower handrail mounts



Water tower mid-span mounts

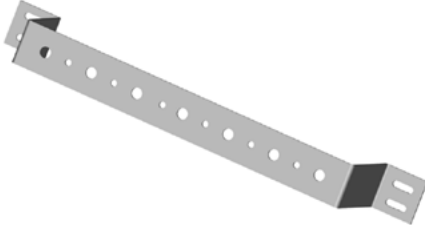


DESCRIPTION	PIPES INCLUDED	PART NUMBER
Water tower tripod mounts		
Water tower tripod mounts	(1) 3-1/2"OD x 96" mount pipe	WT-TMA35-96
	(1) 4-1/2"OD x 96" mount pipe	WT-TMA45-96
Water tower handrail mounts		
Water tower handrail mount for 2-3/8" OD pipe	None	WT-HRM2-B
	(1) 2-3/8" OD x 72" mount pipe	WT-HRM2-72
	(1) 2-3/8" OD x 96" mount pipe	WT-HRM2-96
	(1) 2-3/8" OD x 126" mount pipe	WT-HRM2-126
Universal handrail mount for 2-3/8" to 4-1/2" pipe	None	WT-HRM-U
Water tower mid-span mounts		
Mis-span mount for 2-3/8" pipe	None	WT-MSM2-B
Mis-span mount for 2-7/8" pipe	None	WT-MSM3-B
Mis-span mount for 3-1/2" pipe	None	WT-MSM35-B
Mis-span mount for 4-1/2" pipe	None	WT-MSM4-B

WATER TOWER CABLE SUPPORT COMPONENTS

ORDERING INFORMATION

Water tower cable support stand-off brackets



DESCRIPTION	NUMBER OF CABLE RUNS	PART NUMBER
Water tower cable support stand-off brackets		
	2 runs	VC-WGSO-2
Water tower cable support stand-off brackets	4 runs	VC-WGSO-4
	7 runs	VC-WGSO-7
	12 runs	VC-WGSO-12

Since 1937, ANDREW, an Amphenol company, has driven the evolution of wireless technology. Trusted by mobile network operators and enterprises globally, we work closely with our customers to deliver innovative solutions that enhance connectivity experiences both outdoors and indoors. Our dedicated global team is committed to advancing the industry, fueled by the vision that a better-connected future is possible.



ANDREW.COM

Visit our [website](https://www.andrew.com) or contact your local ANDREW representative for more information.

©2025 Amphenol Corporation. All rights reserved. Amphenol and ANDREW are registered trademarks of Amphenol and/or its affiliates in the U.S. and other countries. All product names, trademarks and registered trademarks are property of their respective owners. CO-119678-EN (01/25)