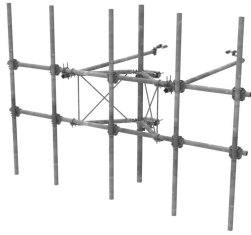


SFG23RHDX-15-5-120



G23RHDX Tower Sector Frame with spine extension for RRU Mounting, 15 ft x 2.88 in OD face pipes, includes five 2.88 OD x 120 in antenna pipes

- Extended spine for SFG23 RHDX mounts that decrease PIM from radio relocation
- Increased versatility and stability
- Updated frame provides higher loading
- More RRU mounting available, reducing need for additional mounts
- Better load management
- Less structure stress
- Can be used in combination with APEX RRU mounts

Product Classification

Product Type	High capacity Tower sector frame
Product Brand	PIM-guard
Product Series	G2
Ordering Note	NSTD445 Compliant

General Specifications

Mounting	Angle 60°, 203.2 mm (8 in) Straight or tapered legs up to 203.2 mm (8 in) OD
Patent Number	Patent pending
Pipe, quantity	5
Sectors, quantity	1
Tower Taper	Non-tapered Tapered

Dimensions

Height	3,048 mm 120 in
Face Width	4,572 m 15 ft
Width	4,572 mm 180 in
Pipe Length	3,048 mm 120 in
Face Support Pipe Diameter	73.025 mm 2.875 in
Mounting Diameter, maximum	218.44 mm 8.6 in
Mounting Diameter, minimum	38.1 mm 1.5 in

SFG23RHDX-15-5-120

Pipe Outer Diameter 73.025 mm | 2.875 in

Stand-off Distance 1,066.8 mm | 42 in

Material Specifications

Material Type Hot dip galvanized steel

Mechanical Specifications

Wind Rating For Specifications, please contact your local ANDREW representative

Packaging and Weights

Included Antenna mounting pipes | Crossover plates | Frame | Stiff arms (2) | Tower attachment

Packaging quantity 1

Weight, net 480.354 kg | 1059 lb

Regulatory Compliance/Certifications

Agency	Classification
CHINA-ROHS	Above maximum concentration value
ROHS	Compliant/Exempted
UK-ROHS	Compliant/Exempted



* Footnotes

Wind Rating BWS—Base Wind Speed; FBC—Florida Building Code