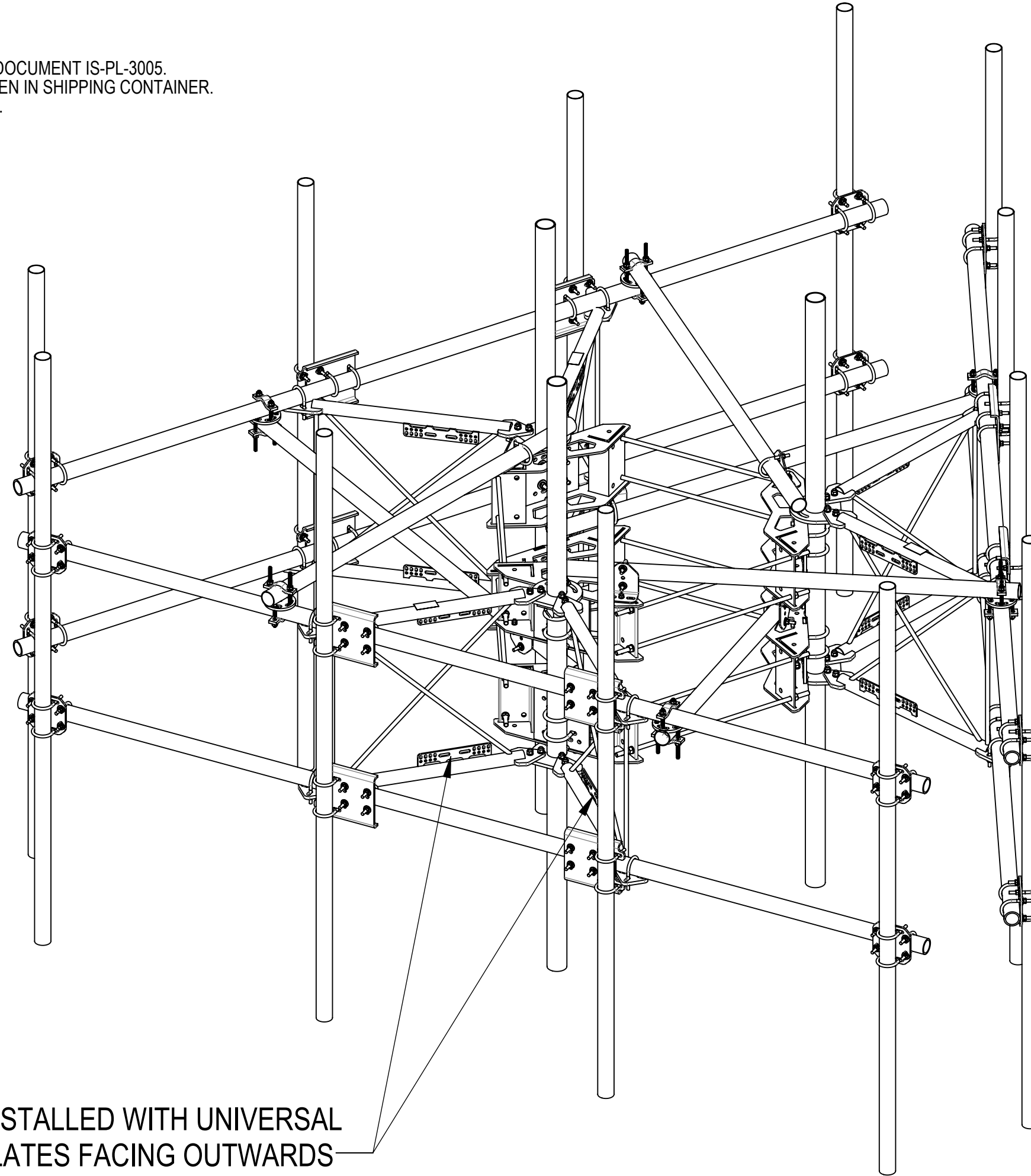


- 1.0 GENERAL NOTES
  - 1.1 ALL METRIC DIMENSIONS ARE IN BRACKETS [X. X]
  - 1.2 FOR PATENT INFO: <https://www.cs-pat.com>
- 2.0 DESIGN NOTES
  - 2.1 ANY HAZARDS OR OBSTRUCTIONS TO THE CLIMBING FACILITY AND SAFETY CLIMB MUST BE IDENTIFIED PRIOR TO INSTALLING THE APPURTENANCE. ADDITIONAL PRODUCTS MAY BE REQUIRED TO MAINTAIN THE INTEGRITY OF THE SAFETY CLIMB. DURING INSTALLATION, TEMPORARY AND/OR PERMANENT PRECAUTIONARY MEASURES SHOULD BE TAKEN TO PRESERVE THE CLIMBING FACILITY AND/OR SAFETY CLIMB.
  - 2.2 FITS MONOPOLES 45" TO 50" OD. MONOPOLE DIAMETER MUST BE GREATER THAN OR EQUAL TO 45" TO MEET ANTENNA TO ANTENNA CORNER SPACING OF >24".
- 3.0 MANUFACTURING/SPECIAL REQUIREMENTS
  - 3.1 TIGHTEN ALL BOLTS SECURING FLAT PLATES BY THE TURN-OF-NUT METHOD. TIGHTEN ALL U-BOLTS USING TURN-OF-NUT METHOD WITH ATTENTION TO LEAVE EQUAL DISTANCE AND EQUAL FORCE ON EACH LEG OF THE U-BOLT.
- 4.0 TEST
- 5.0 PACKAGING
  - 5.1 PACKAGING SHALL MEET COMMSCOPE REQUIREMENTS PER DOCUMENT IS-PL-3005.
  - 5.2 PRINTED DOCUMENT TO BE PLACED INSIDE POLYBAG AND THEN IN SHIPPING CONTAINER.
  - 5.3 EXTRA HARDWARE MAY BE SUPPLIED, BAGGED AND SHIPPED.

REVISIONS			
REV.	DESCRIPTION	DATE	APPROVED
A	INITIAL RELEASE	JL1183 16APR24	CB1094 40193542CMO
B	V-ARM SFG2292-00 (ITEM 3) WAS SFG2278; SHEET5: ADDED V-ARM DETAIL VIEW	JL1183 12JUL24	CB1094 40200155CMO



SHOULD BE INSTALLED WITH UNIVERSAL  
INTERFACE PLATES FACING OUTWARDS

<b>COMMSCOPE, INC. OF NORTH CAROLINA</b>											
TOLERANCES						SAP MATERIAL MASTER					
0 PLACE X[X] ± 0.25[6.3]			2 PLACE .XX[X] ± 0.06[1.5]			MCG22RHDX-15M12120					
1 PLACE X[X] ± 0.12[3.0]			ANGLES ± 2°								
FINISH						MATERIAL					
						PG,MP,SF,15'FP,(12)120"AP					
UNLESS OTHERWISE SPECIFIED DIMENSIONS ARE IN INCHES INTERPRET PER ANSI Y 14.5M-1994		NAME		DATE		SCALE: <b>1:20</b> DOCUMENT NO. <b>MCG22RHDX-15M12120</b>					
		CE JL1183		18FEB24							
		RW JL1183		07/15/2024							
		AD CB1094		07/18/2024							
		RE YMENG		08/05/2024							
ECN 40200155CMO						SIZE		Auth Group		INSL	
DENSITY		2720.16		lbs/in³		VERSION		STATUS		REVISION	
MASS		11696.78		lbs		01		RE		B	
VOLUME		99416.55		in³		DRAWING		VERSION		STATUS	
SURFACE AREA		120"		in²		01		RE		B	
HEIGHT		180"		in²		DRAWING		VERSION		STATUS	
LENGTH		84"		in²		01		RE		B	
WIDTH						DRAWING		VERSION		STATUS	
						01		RE		B	

DENSITY	2720.16	lbs/in³
MASS	11696.78	lbs
VOLUME	99416.55	in³
SURFACE AREA	120"	in²
HEIGHT	180"	in²
LENGTH	84"	in²
WIDTH		

D

D

C

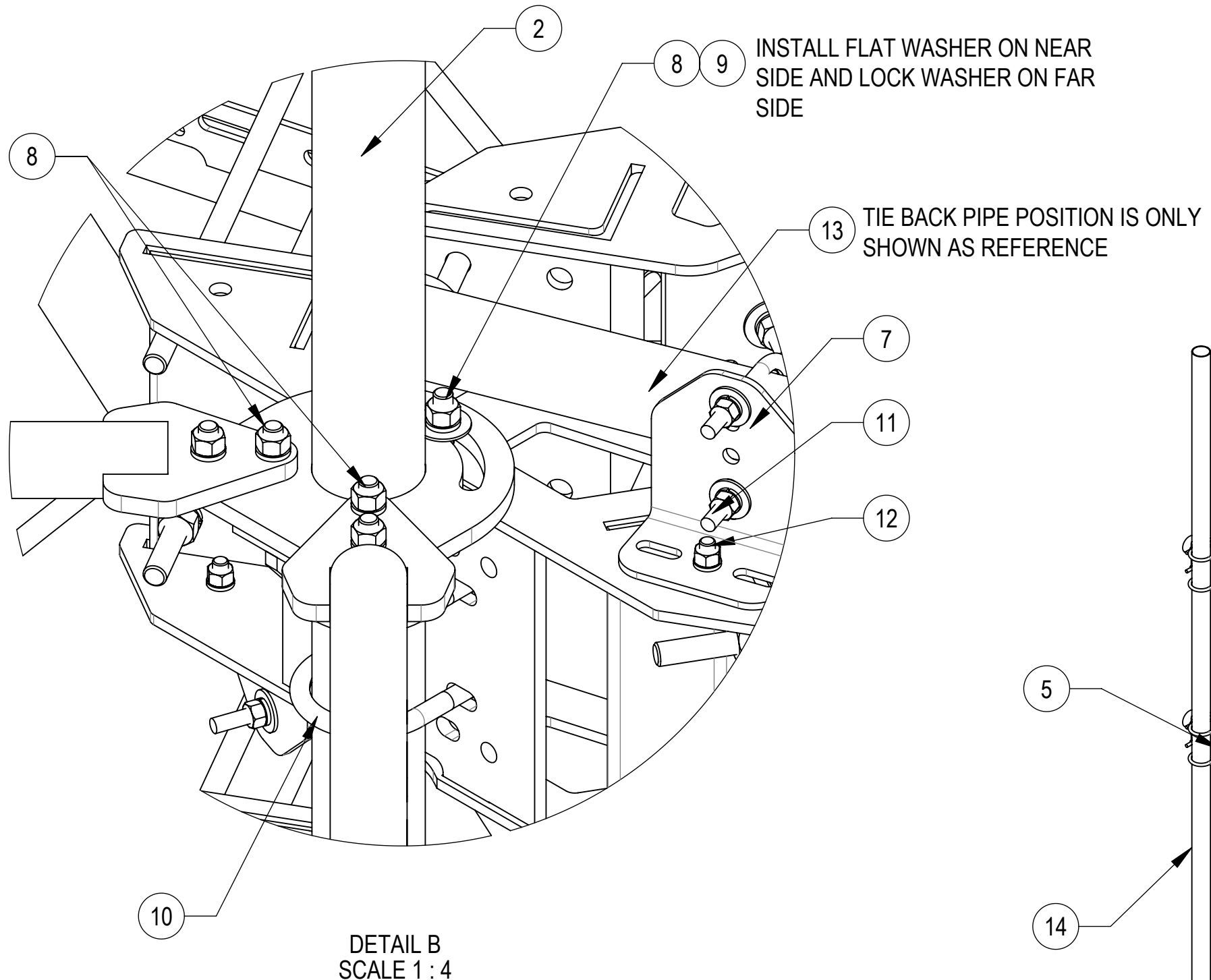
C

B

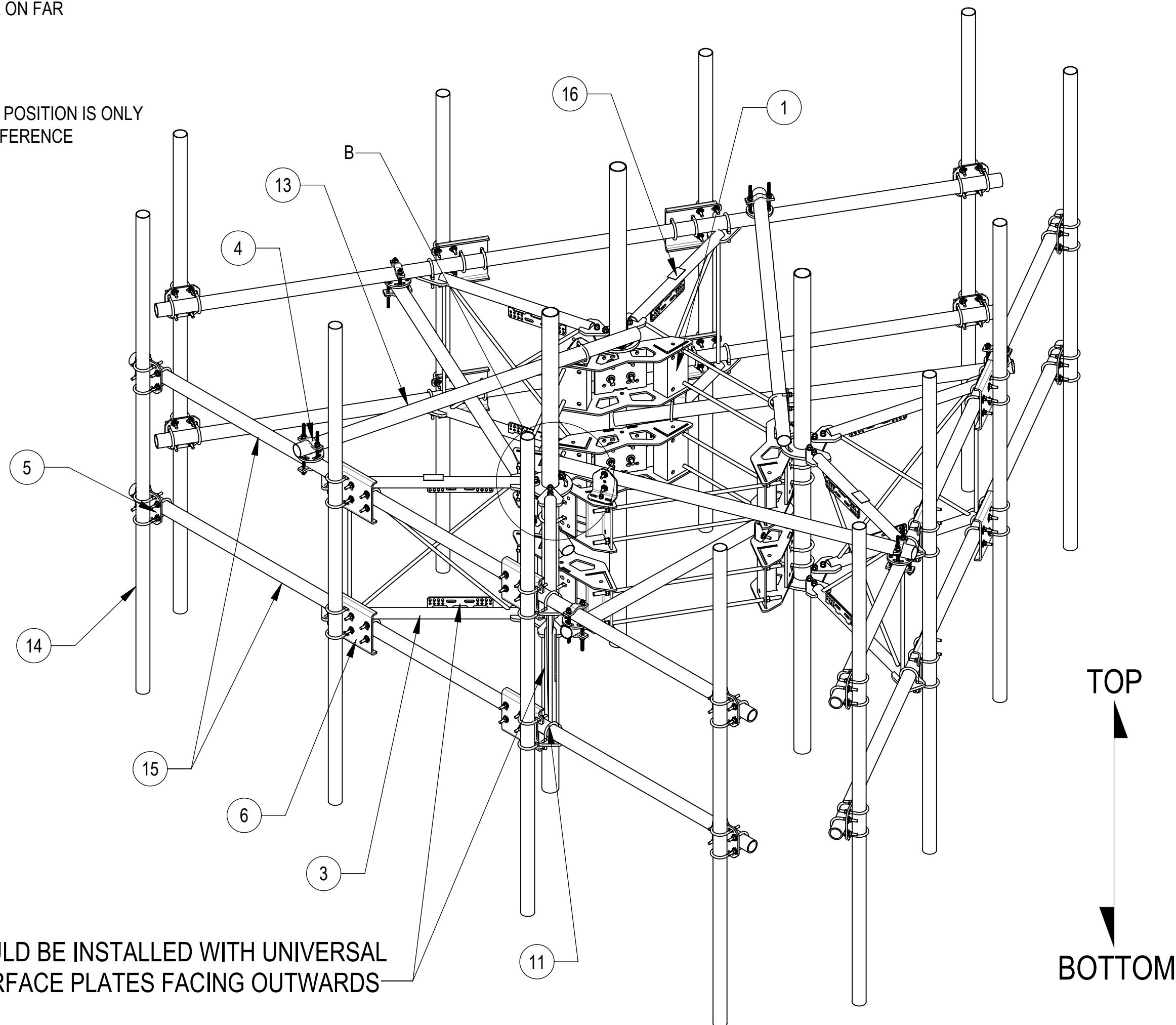
B

A

A



DETAIL B  
SCALE 1 : 4



SHOULD BE INSTALLED WITH UNIVERSAL  
INTERFACE PLATES FACING OUTWARDS

TOP  
↓  
BOTTOM

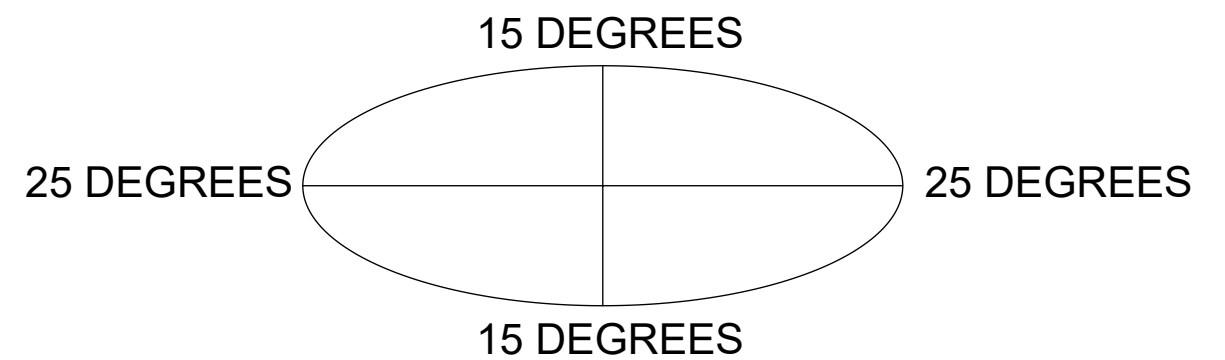
COMPONENT PART NUMBERS PROVIDED FOR ASSEMBLY PURPOSES;  
INDIVIDUAL COMPONENTS MAY BE SHIPPED AS PARTS WITHIN AN INCLUDED KIT.

ITEM	PART NO.	DESCRIPTION	QTY.	WEIGHT	NOTE NO.
1	MC-RM1550-3	15" - 50" OD RINGMOUNT	2	229.90 LBS	
2	SFG2204	WELDMENT, BACK VERTICAL ARM MOUNT	3	36.96 LBS	
3	SFG2292-00	WELDMENT, V-ARM, SECTOR FRAME 22	6	49.69 LBS	
4	XP-R	CROSSOVER PLATE, ROUND, UP TO 3.5" OD	6	6.20 LBS	
5	XP-2525	CROSSOVER PLATE KIT, 2-7/8 OD X 2-7/8 OD	12	8.37 LBS	
6	XP-2525-OFF	OFFSET CO PLATE KIT, 2-7/8ODX2-7/8OD	12	16.64 LBS	
7	XAU01	ANGLE, CROSSOVER, 1.9-3.5" X 1.9-3.5" OD	6	2.98 LBS	
8	GB-05225	5/8" X 2-1/4" GALV BOLT KIT	30	0.28 LBS	
9	GWF-05	5/8" GALV FLAT WASHER, 1.7OD	6	0.06 LBS	
10	GUB-53560	5/8" X 3-5/8" X 6" GALV U-BOLT	12	1.30 LBS	
11	GUB-4352	1/2" X 3" X 5-1/4" GALV U-BOLT	18	0.71 LBS	
12	GB-04145	1/2" X 1-1/2" GALV BOLT KIT	6	0.13 LBS	
13	MT546084120	2.88" OD X 84" LONG PIPE	6	24.81 LBS	
14	MT546120120	PIPE, 2.875"OD X 120"	12	35.44 LBS	
15	MT546180276	PIPE, 2.875"OD X 180"	6	115.33 LBS	
16	SFG2295	LABEL, SFG22RHDX	3	0.04 LBS	



**ALLOWABLE TIEBACK ANGLE**

± 15 DEGREES VERTICAL  
± 25 DEGREES HORIZONTAL



COMMSCOPE, INC. OF NORTH CAROLINA			
TITLE PG,MP,SF,15'FP,(12)120"AP			
SIZE <b>C</b>	SCALE <b>1:20</b>	DOCUMENT NO. <b>MCG22RHDX-15M12120</b>	
DRAWING		VERSION	STATUS
REVISION		01	RE
SHEET		REVISION	B
2 OF 5			

4

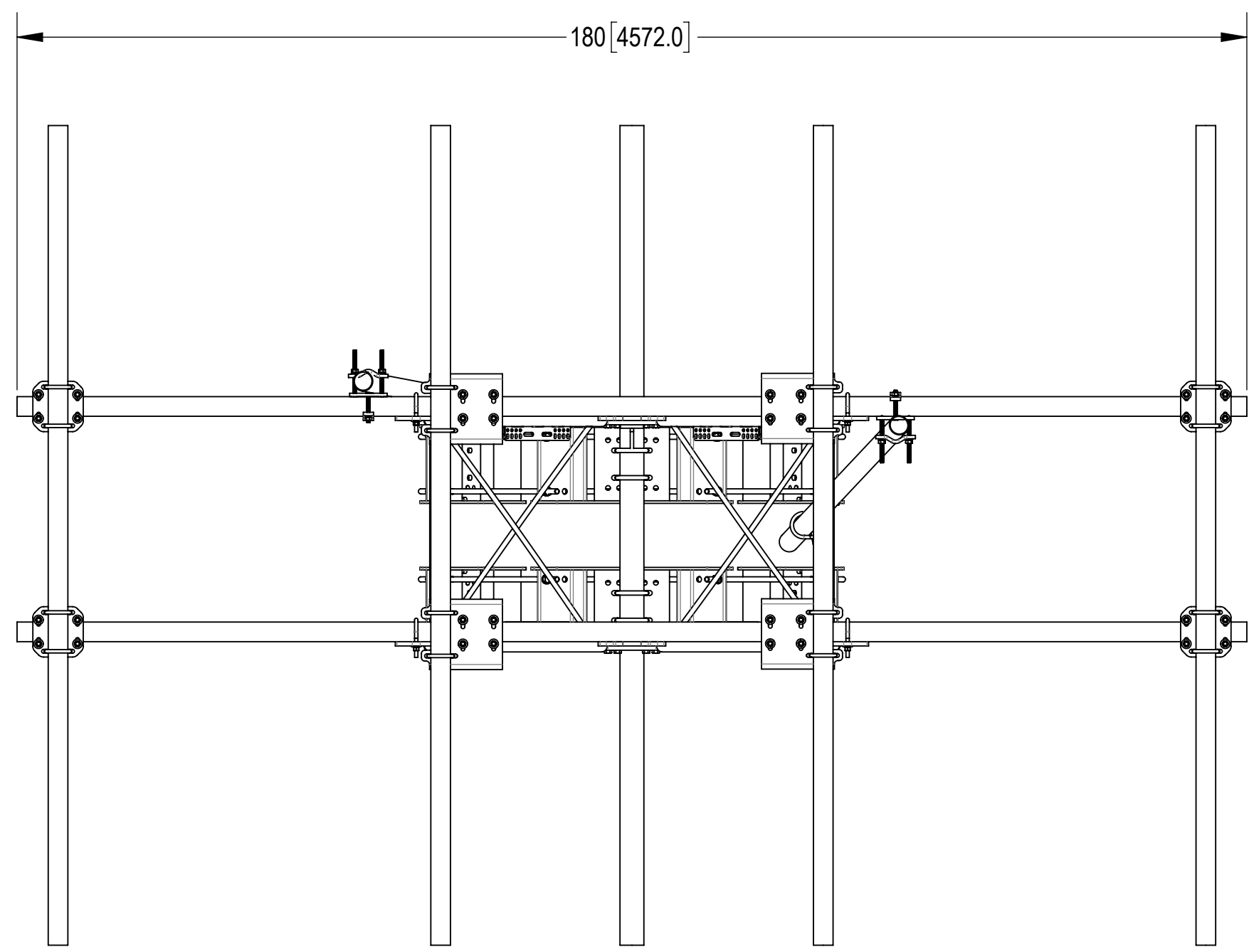
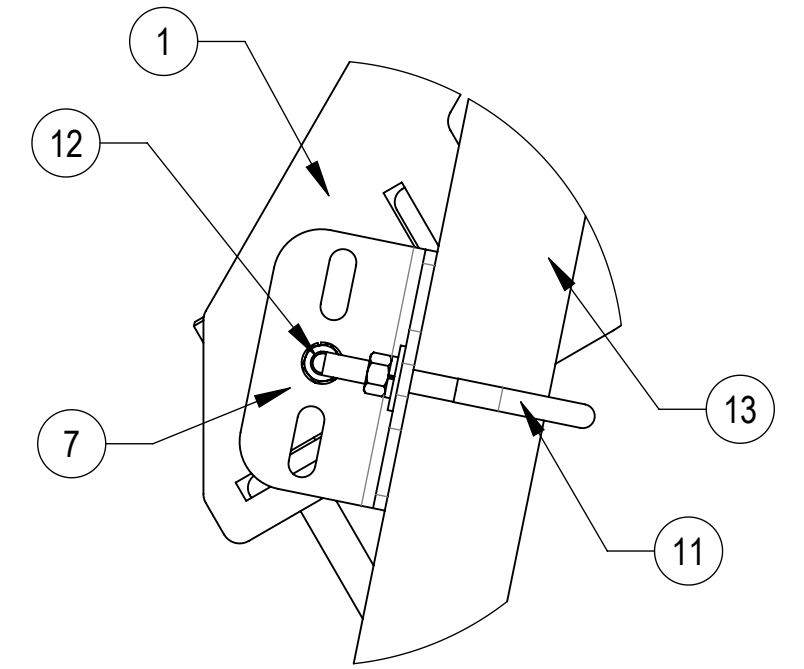
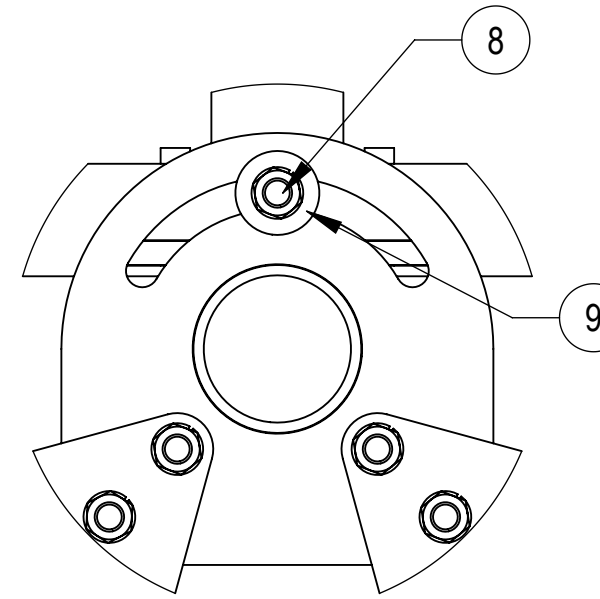
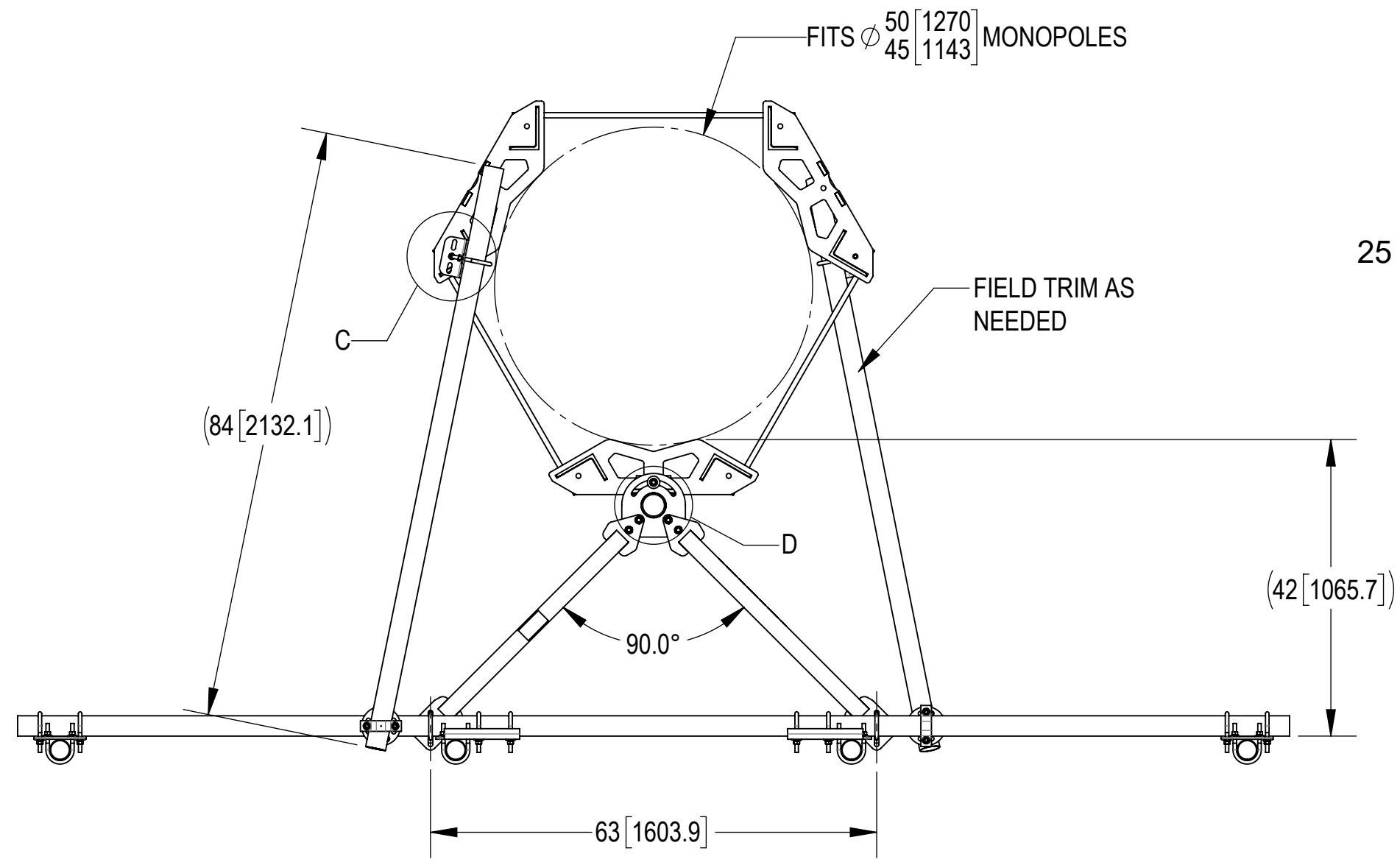
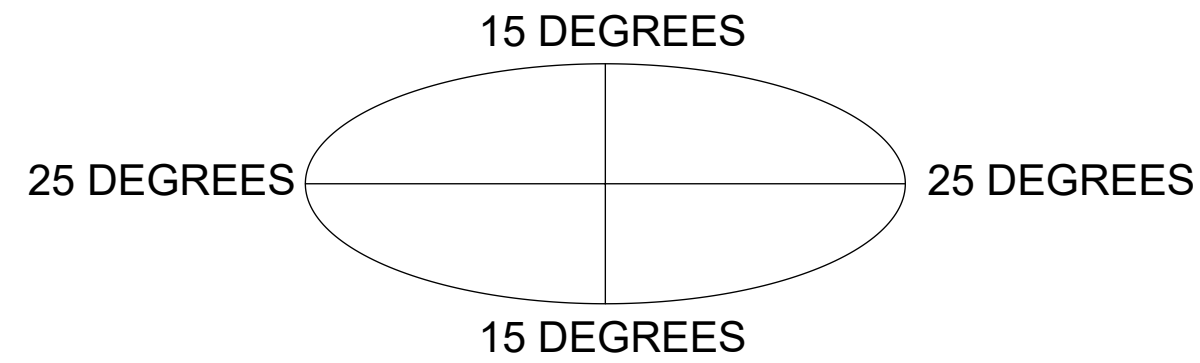
3

2

1

### ALLOWABLE TIEBACK ANGLE

± 15 DEGREES VERTICAL  
± 25 DEGREES HORIZONTAL

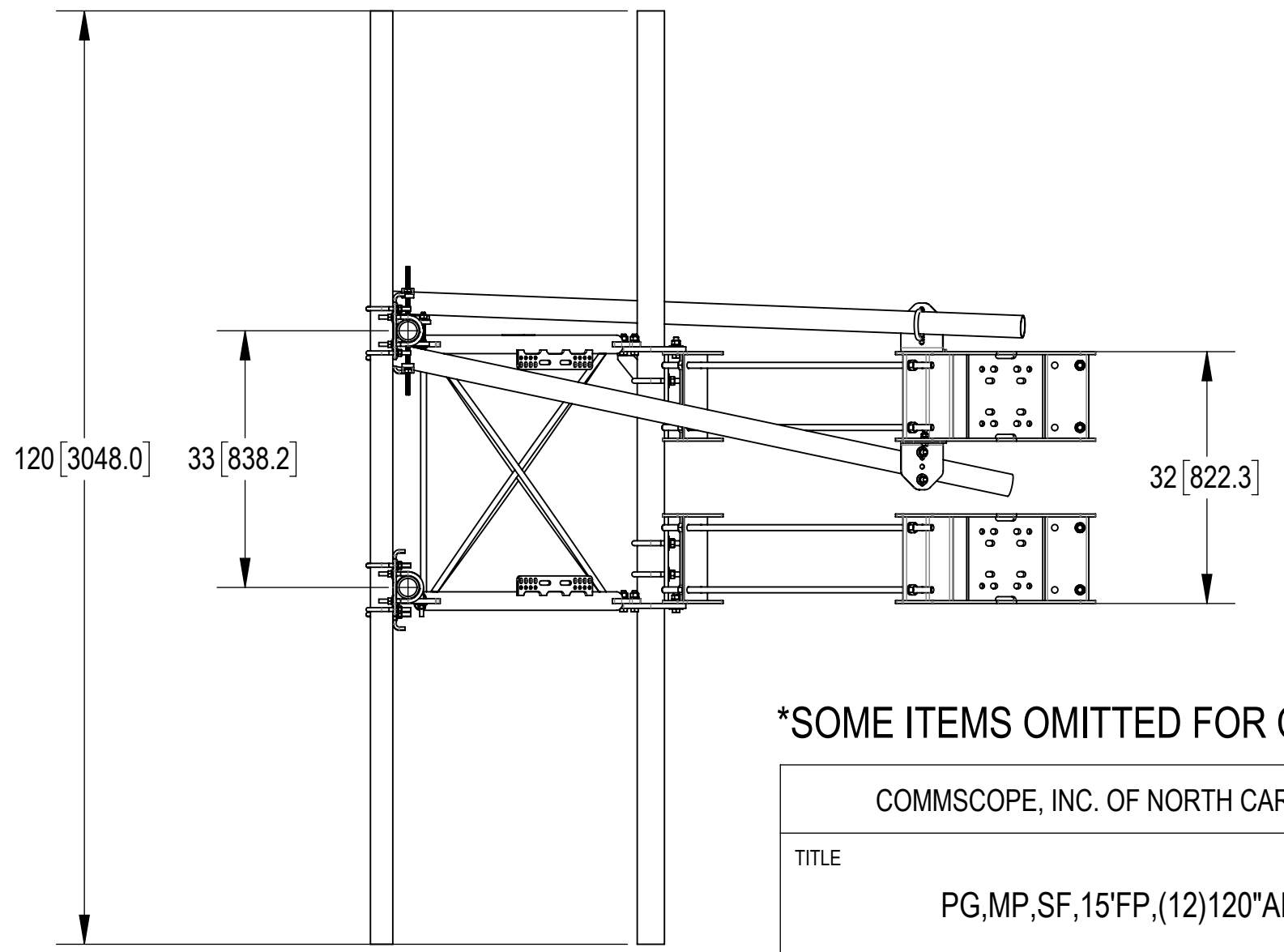


TOP

↓

↑

BOTTOM



\*SOME ITEMS OMITTED FOR CLARITY\*

COMMSCOPE, INC. OF NORTH CAROLINA				
TITLE PG,MP,SF,15'FP,(12)120"AP				
SIZE <b>C</b>	SCALE <b>1:20</b>	DOCUMENT NO. MCG22RHDX-15M12120		
		DRAWING		SHEET
		VERSION	STATUS	REVISION
		01	RE	B
				3 OF 5

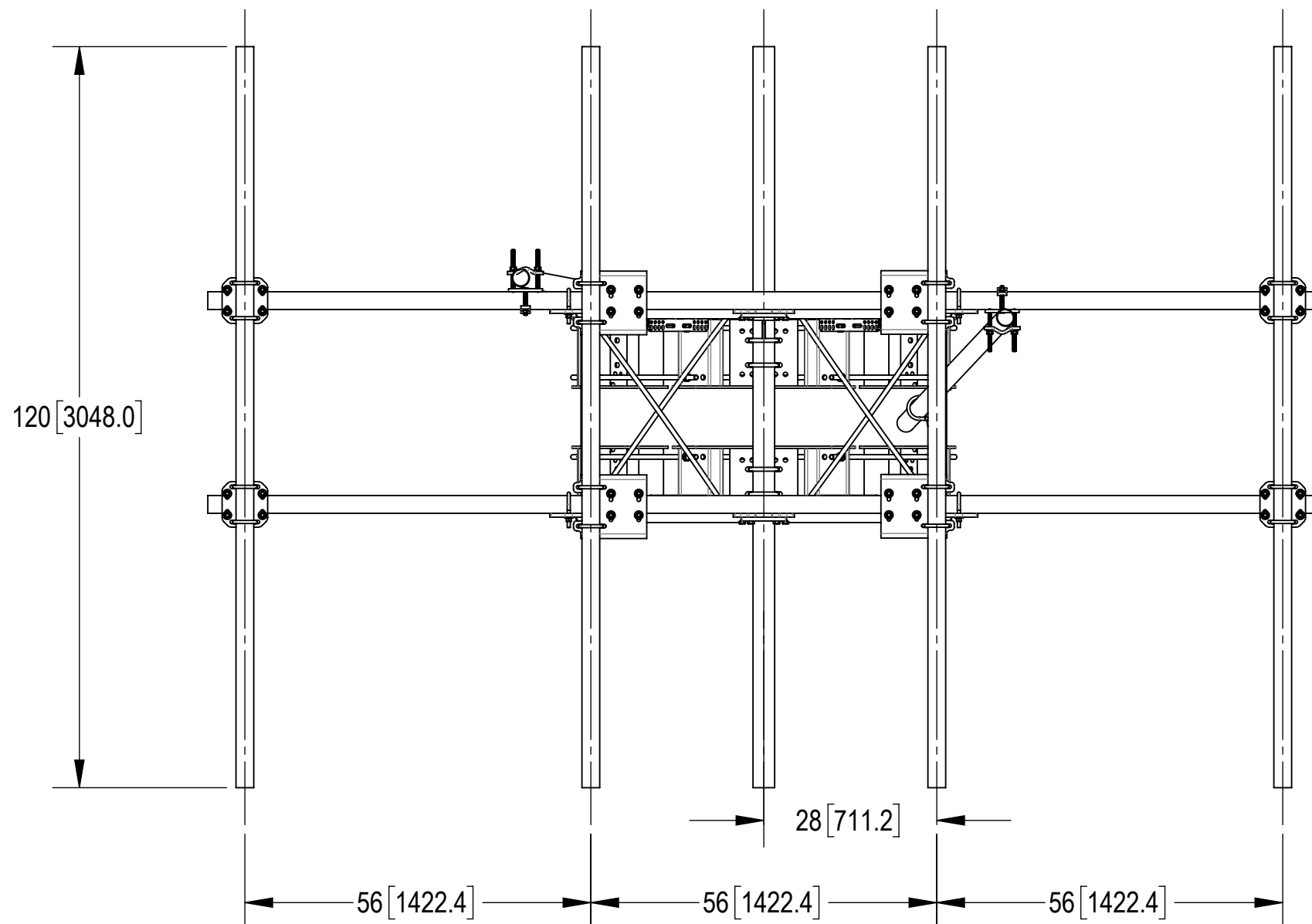
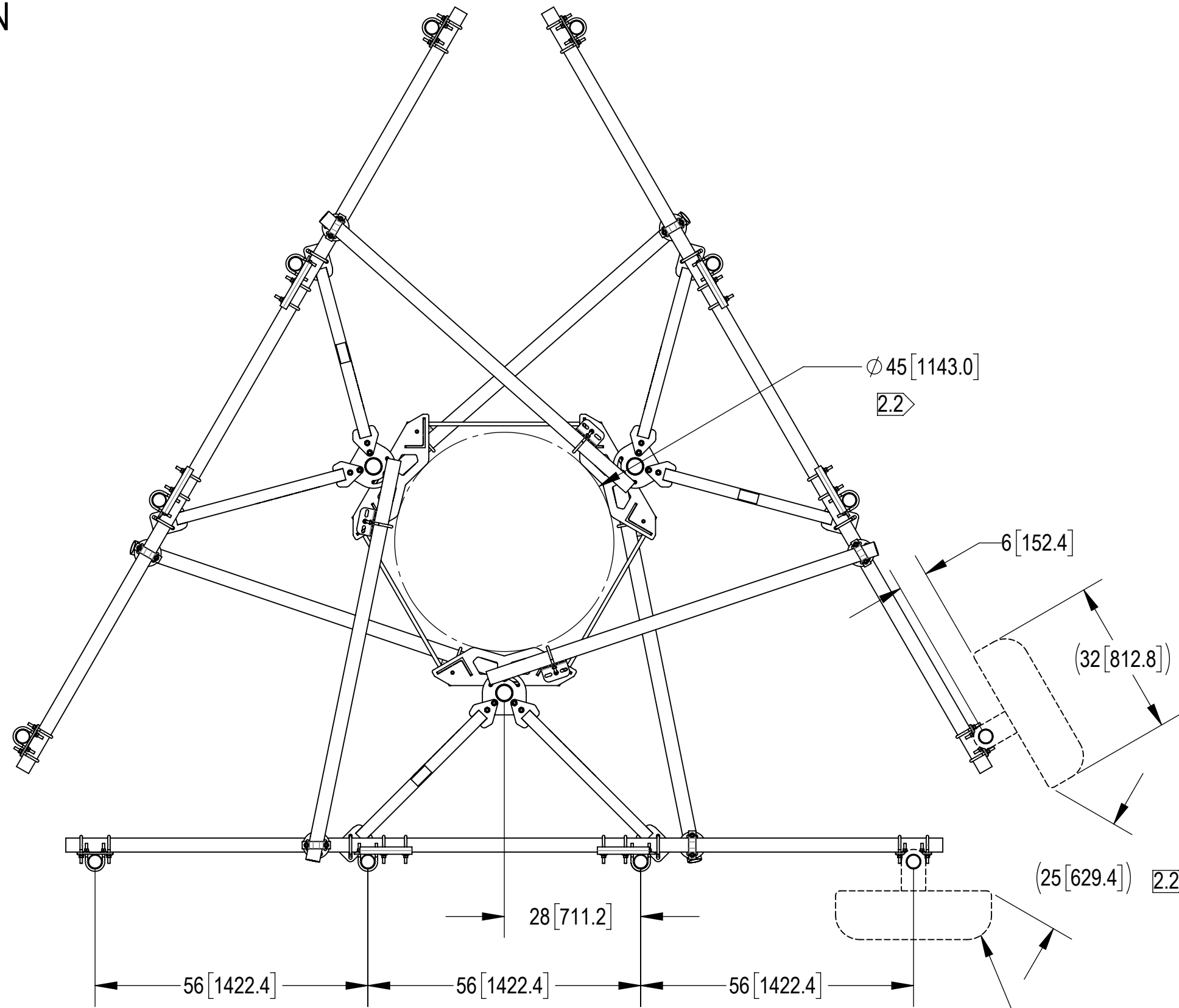
4

3


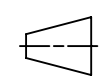
2

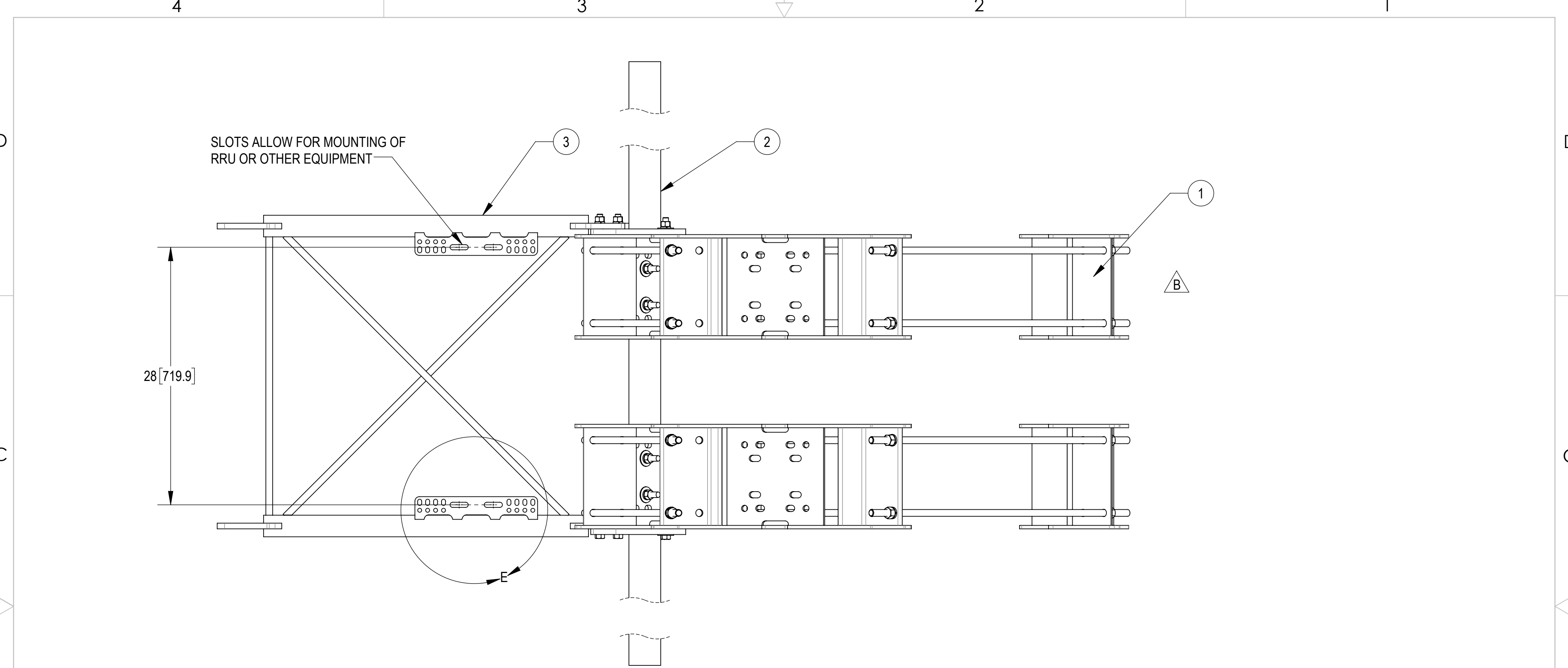
1

ANTENNA SPACING SHOWN

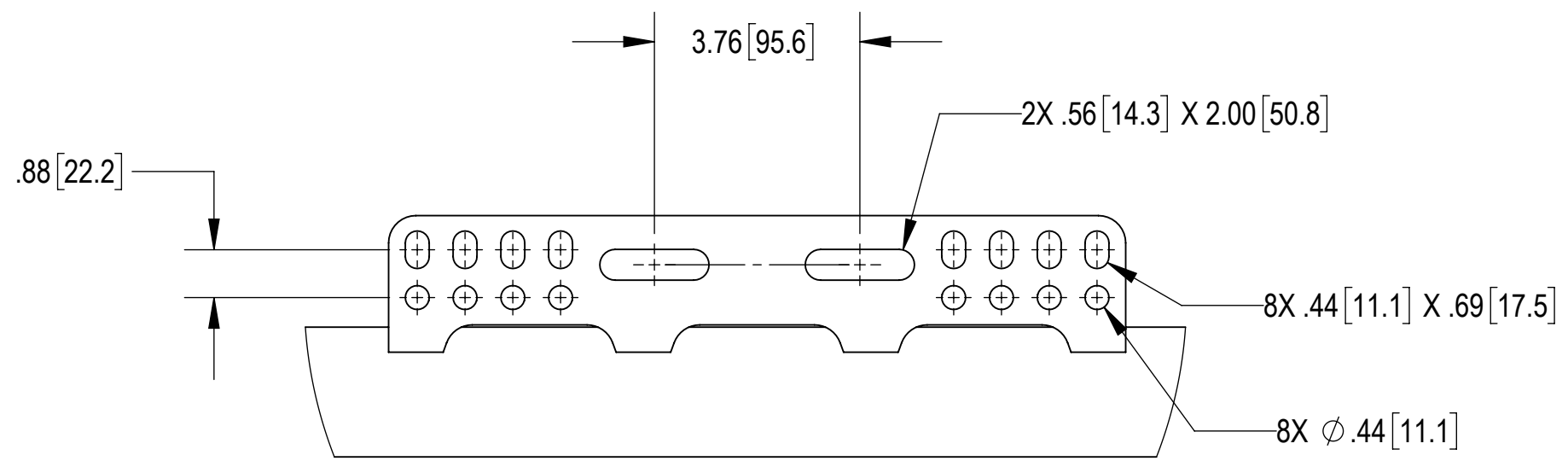


\*SOME ITEMS OMITTED FOR CLARITY\*

COMMSCOPE, INC. OF NORTH CAROLINA					
TITLE PG,MP,SF,15'FP,(12)120"AP					
SIZE <b>C</b>	SCALE <b>1:24</b>	DOCUMENT NO. MCG22RHDX-15M12120			
 		DRAWING			SHEET 4 OF 5
		VERSION 01	STATUS RE	REVISION B	



**SIDE VIEW**



**DETAIL E**  
SCALE 1 : 3  
2 PLACES

**\*SOME ITEMS OMITTED FOR CLARITY\***

COMMSCOPE, INC. OF NORTH CAROLINA				
TITLE PG,MP,SF,15'FP,(12)120"AP				
SIZE <b>C</b>	SCALE <b>1:8</b>	DOCUMENT NO. MCG22RHDX-15M12120		
		DRAWING		SHEET 5 OF 5
		VERSION 01	STATUS RE	